

Planck Early Release Compact Source Catalog

PLCKERC100 (100 GHz)

Computed PSF

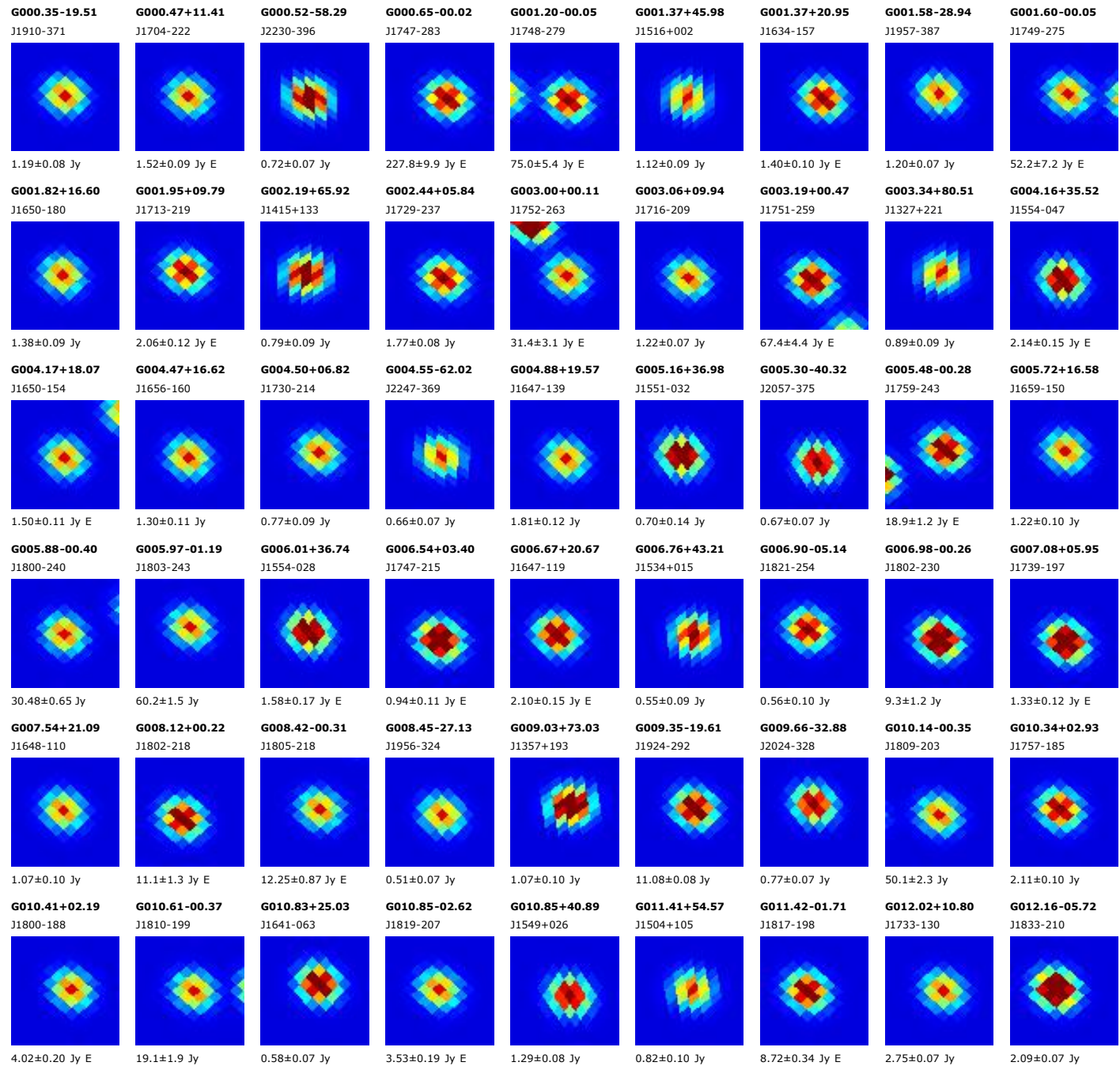
Catalog: ERCSC_f100.fits (1381 sources) sorted by GLON

Origin: U.S. Planck Data Center

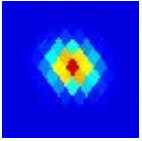
Date: 2010-11-17

Map: ERCSC_f100_EB_map.fits

Image width: 0.67 deg

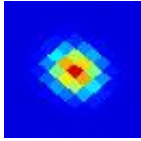


G012.23-39.31
J2056-321



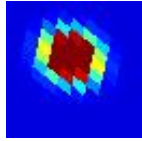
0.47±0.09 Jy E

G012.79-00.21
J1814-179



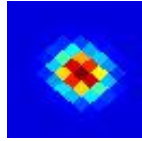
60.7±1.6 Jy

G013.78-62.90
J2248-326



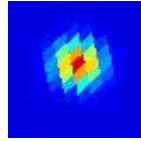
0.43±0.07 Jy E

G013.86+04.57
J1758-146



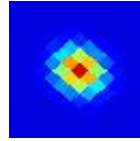
0.93±0.08 Jy

G014.23+42.23
J1550+054



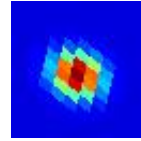
1.48±0.07 Jy

G014.60+00.04
J1816-162



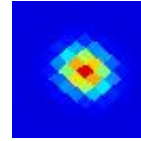
18.5±1.7 Jy E

G014.90-68.51
J2314-316



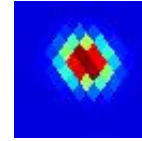
0.56±0.07 Jy E

G015.05-00.70
J1820-161



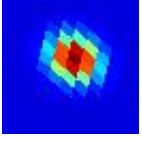
389.3±4.7 Jy

G015.80-39.77
J2101-295



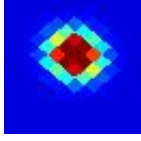
0.71±0.07 Jy

G016.01-57.57
J2223-315



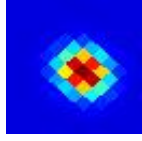
0.42±0.07 Jy

G016.35-00.16
J1821-147



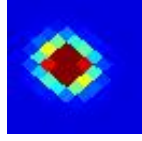
13.7±1.2 Jy

G016.87-13.21
J1911-201



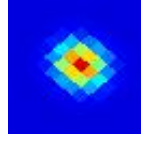
2.61±0.08 Jy

G016.87-02.16
J1829-152



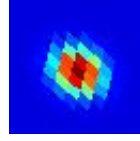
4.43±0.31 Jy E

G016.93+00.74
J1818-138



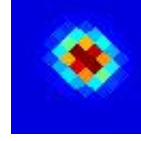
33.0±2.3 Jy E

G017.07-50.79
J2151-304



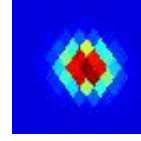
0.69±0.07 Jy

G017.17-16.24
J1923-210



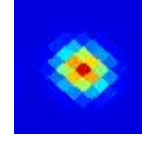
2.43±0.09 Jy

G017.83+39.36
J1606+063



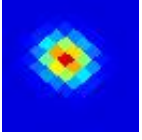
0.45±0.08 Jy

G018.15+01.96
J1816-121



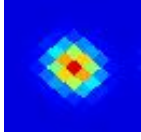
11.77±0.89 Jy E

G018.16-00.27
J1825-132



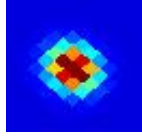
25.60±0.84 Jy

G018.68+01.96
J1817-117



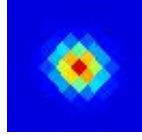
8.87±0.83 Jy E

G018.88-00.45
J1827-126



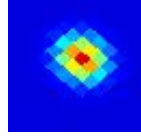
16.5±1.4 Jy E

G019.52+27.25
J1650+014



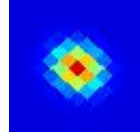
0.63±0.08 Jy E

G019.62-00.20
J1827-119



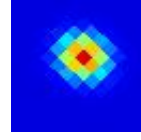
14.82±0.98 Jy E

G020.74-00.08
J1829-108



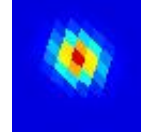
15.24±0.56 Jy

G021.20+19.64
J1720-009



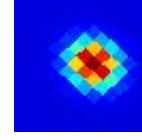
1.63±0.08 Jy

G021.34-50.26
J2151-277



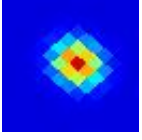
0.61±0.07 Jy

G021.58+13.13
J1743-038



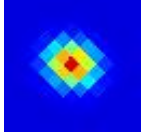
1.93±0.08 Jy

G021.65+03.77
J1817-082



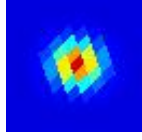
1.18±0.10 Jy E

G022.18+23.81
J1707+018



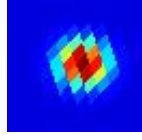
0.58±0.07 Jy

G022.54+52.56
J1524+153



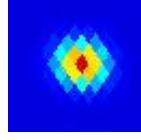
0.63±0.09 Jy

G023.01+42.16
J1603+110



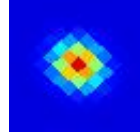
0.55±0.08 Jy

G023.05+40.77
J1608+104



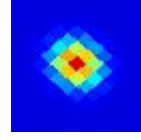
0.87±0.09 Jy

G023.33+11.80
J1751-029



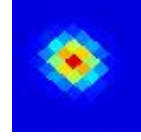
0.81±0.09 Jy E

G023.41-00.22
J1834-085



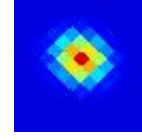
25.5±1.6 Jy E

G023.52+01.59
J1828-076



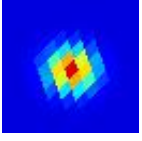
2.66±0.29 Jy

G023.76+18.11
J1730+004



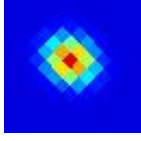
0.55±0.08 Jy

G023.77+45.21
J1553+129



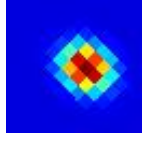
0.60±0.07 Jy E

G023.89-24.27
J2005-183



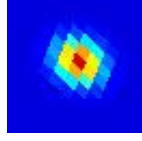
0.62±0.08 Jy E

G024.01-23.13
J2001-178



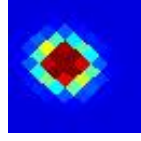
1.16±0.07 Jy

G024.39-64.91
J2258-279



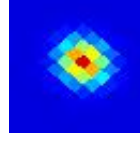
1.93±0.06 Jy

G024.41+14.32
J1745-008



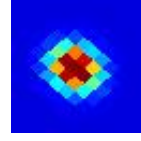
0.86±0.07 Jy E

G024.81+00.10
J1836-071



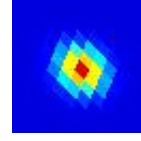
19.2±1.8 Jy E

G025.37-00.16
J1838-067



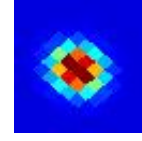
24.67±0.96 Jy

G026.40-54.60
J2213-254



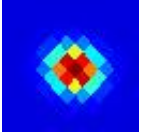
0.62±0.06 Jy

G026.43+01.70
J1833-049



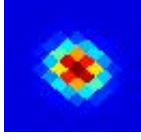
2.86±0.32 Jy

G026.69+28.65
J1658+076



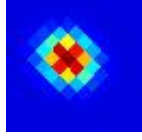
1.12±0.07 Jy

G026.82+03.49
J1827-038



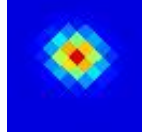
3.04±0.16 Jy E

G027.12-24.60
J2011-157



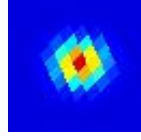
0.59±0.08 Jy

G027.29+20.46
J1728+044



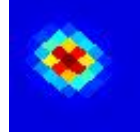
0.95±0.07 Jy

G027.96+55.87
J1516+195



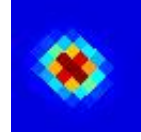
0.63±0.09 Jy

G028.21-00.01
J1842-042



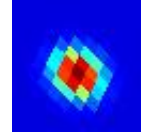
17.5±1.2 Jy E

G028.35-21.32
J2000-134



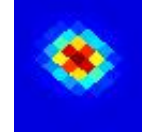
0.56±0.09 Jy E

G028.39-61.37
J2243-257



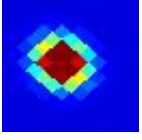
0.62±0.08 Jy

G028.50-06.37
J1906-068



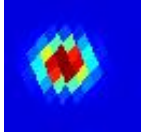
0.85±0.08 Jy E

G028.78+03.46
J1831-021



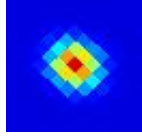
29.12±0.43 Jy

G029.38+43.40
J1607+158



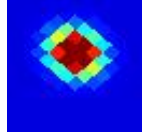
0.86±0.07 Jy

G029.66-19.14
J1954-113



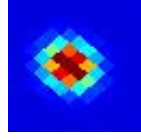
0.66±0.07 Jy

G029.88+02.22
J1837-016



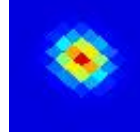
5.12±0.15 Jy

G029.93-00.02
J1846-026



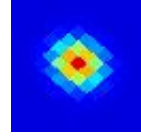
26.3±1.3 Jy

G030.43-04.83
J1904-044



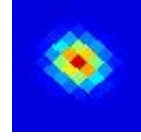
0.73±0.09 Jy E

G030.75-00.03
J1847-019



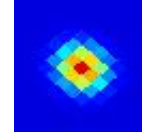
80.4±1.5 Jy

G030.79+12.24
J1803+036



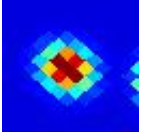
0.60±0.07 Jy

G030.84+05.21
J1829+005



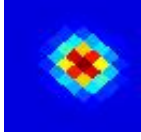
2.73±0.15 Jy E

G031.27+00.06
J1848-014



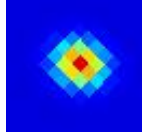
17.4±1.7 Jy E

G031.60+05.34
J1829+012



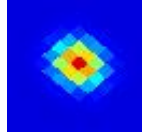
6.79±0.19 Jy

G032.23+24.29
J1722+102



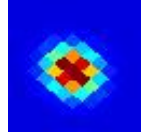
1.14±0.08 Jy

G032.79+00.18
J1850-000



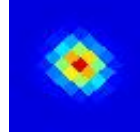
6.7±1.0 Jy

G034.25+00.14
J1853+012



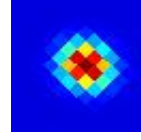
28.1±1.1 Jy

G034.64+11.84
J1812+068



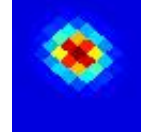
0.82±0.07 Jy

G034.92+17.63
J1751+096



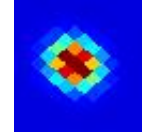
4.20±0.10 Jy

G035.14-00.75
J1858+016

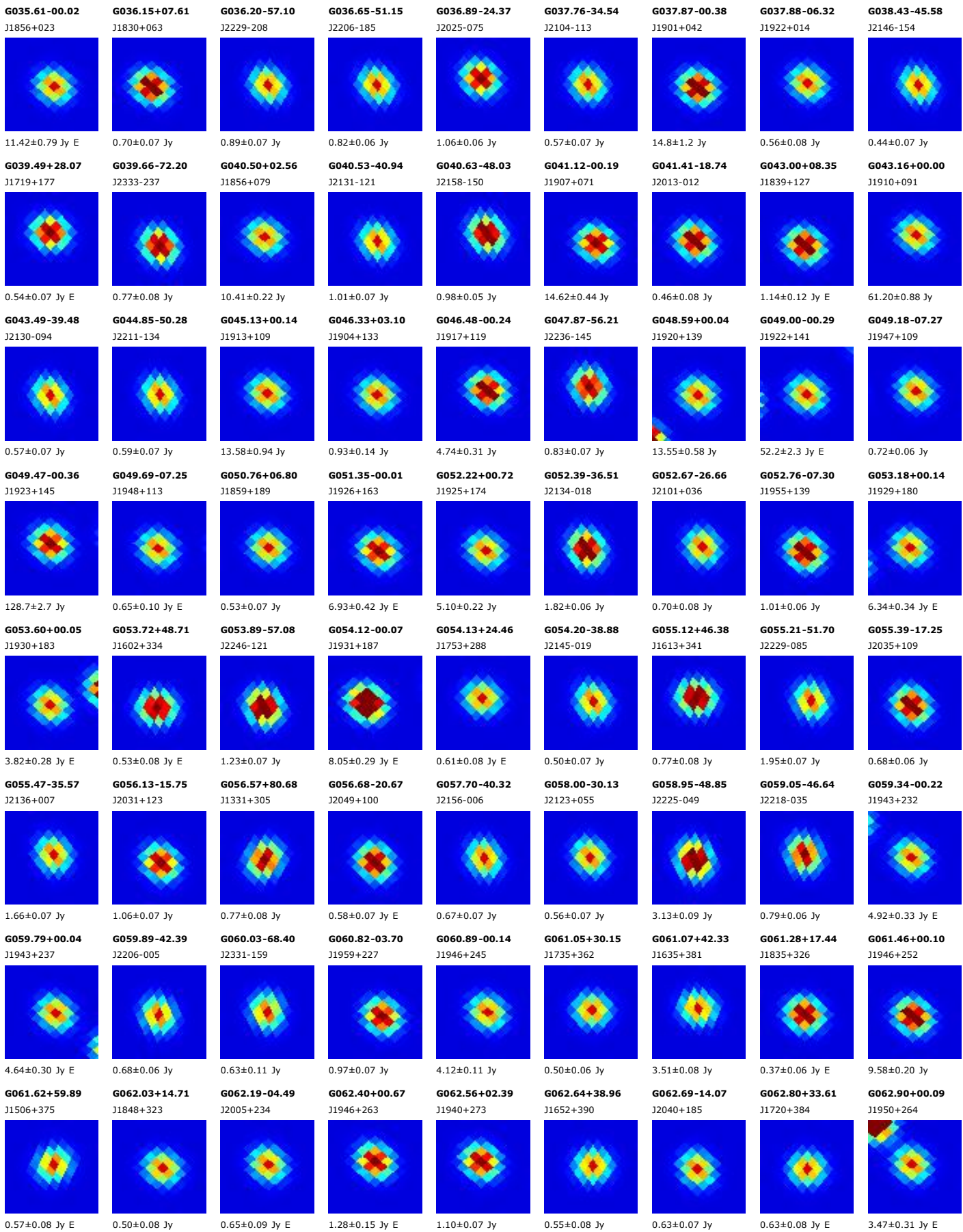


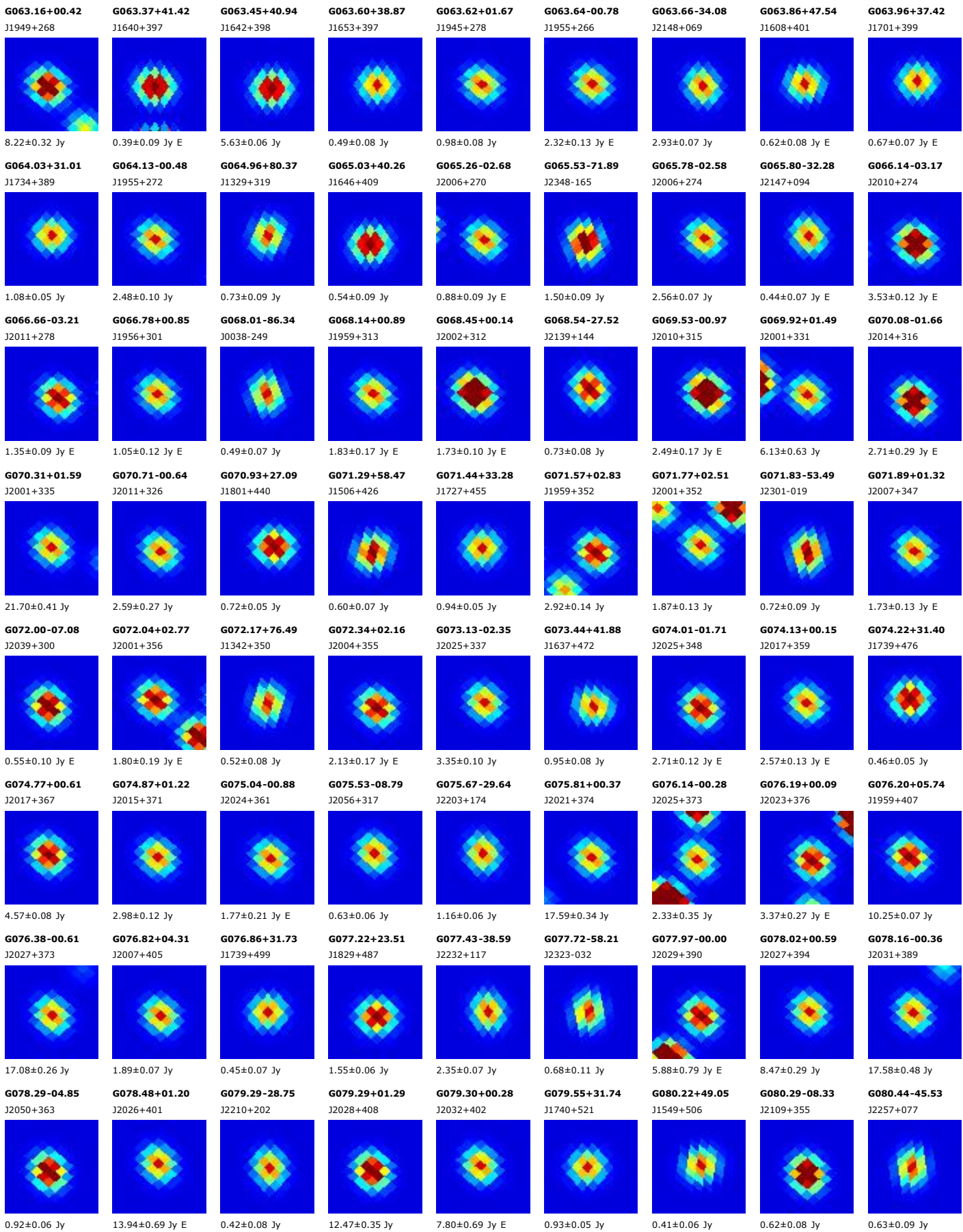
7.19±0.59 Jy

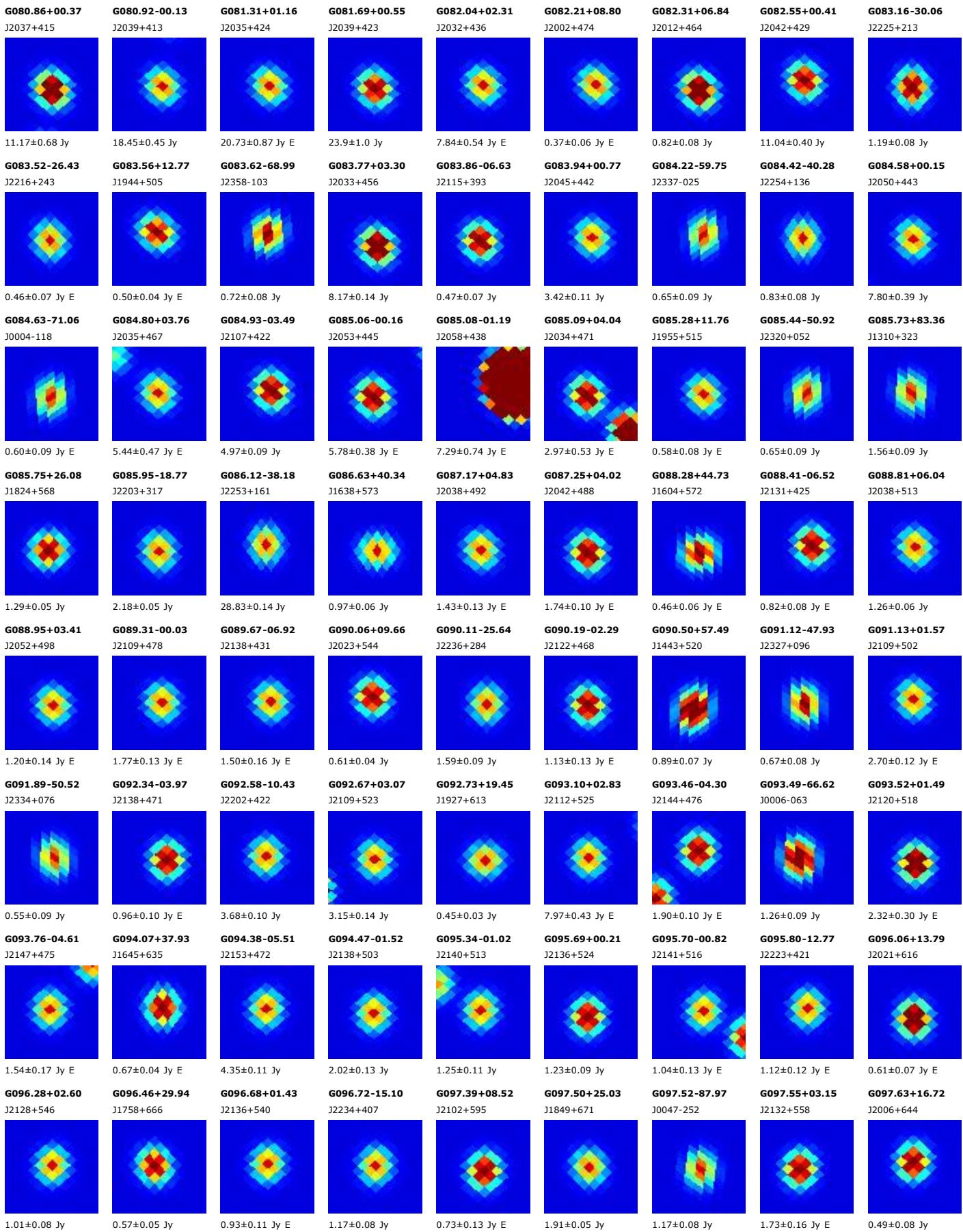
G035.20-01.75
J1901+012

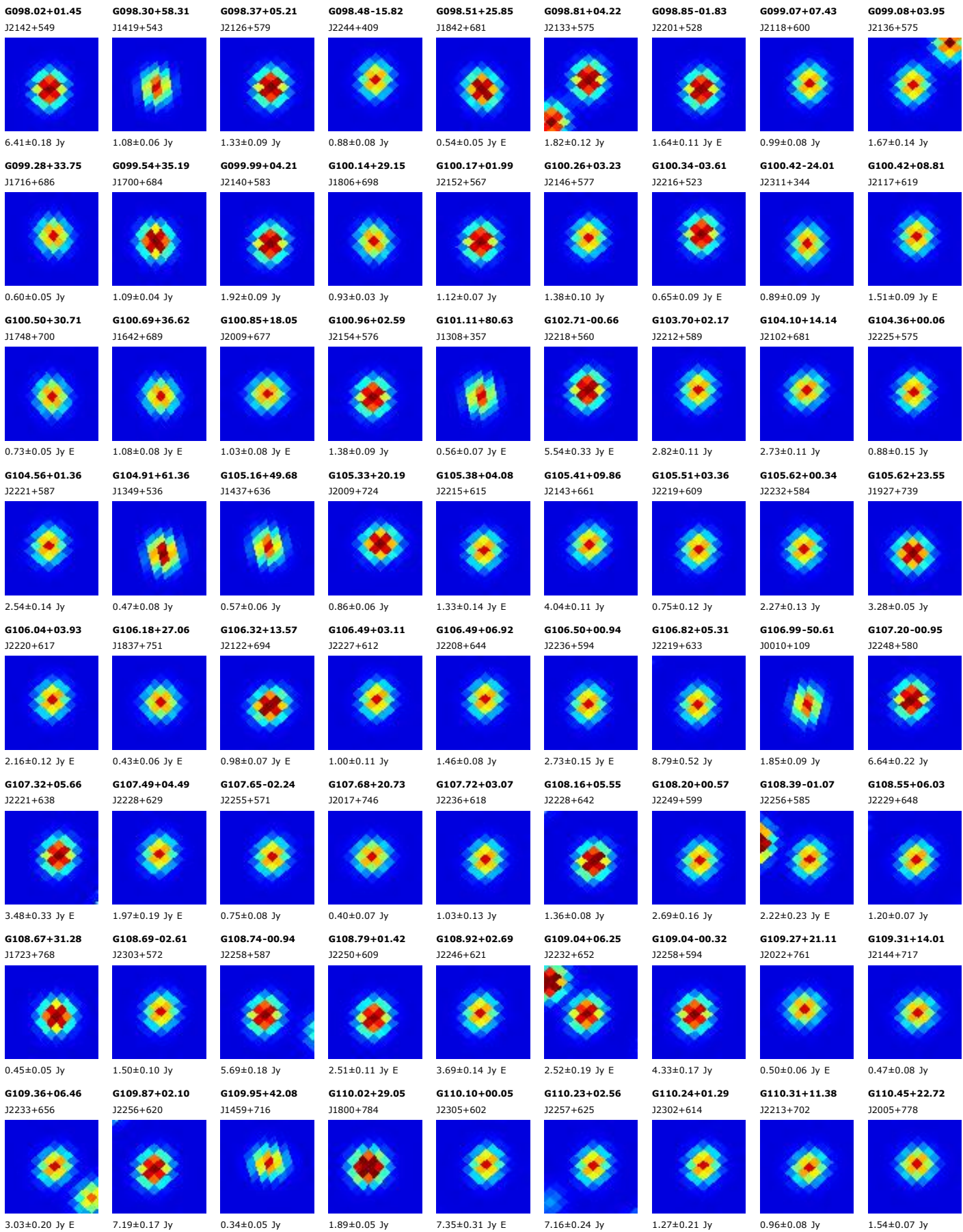


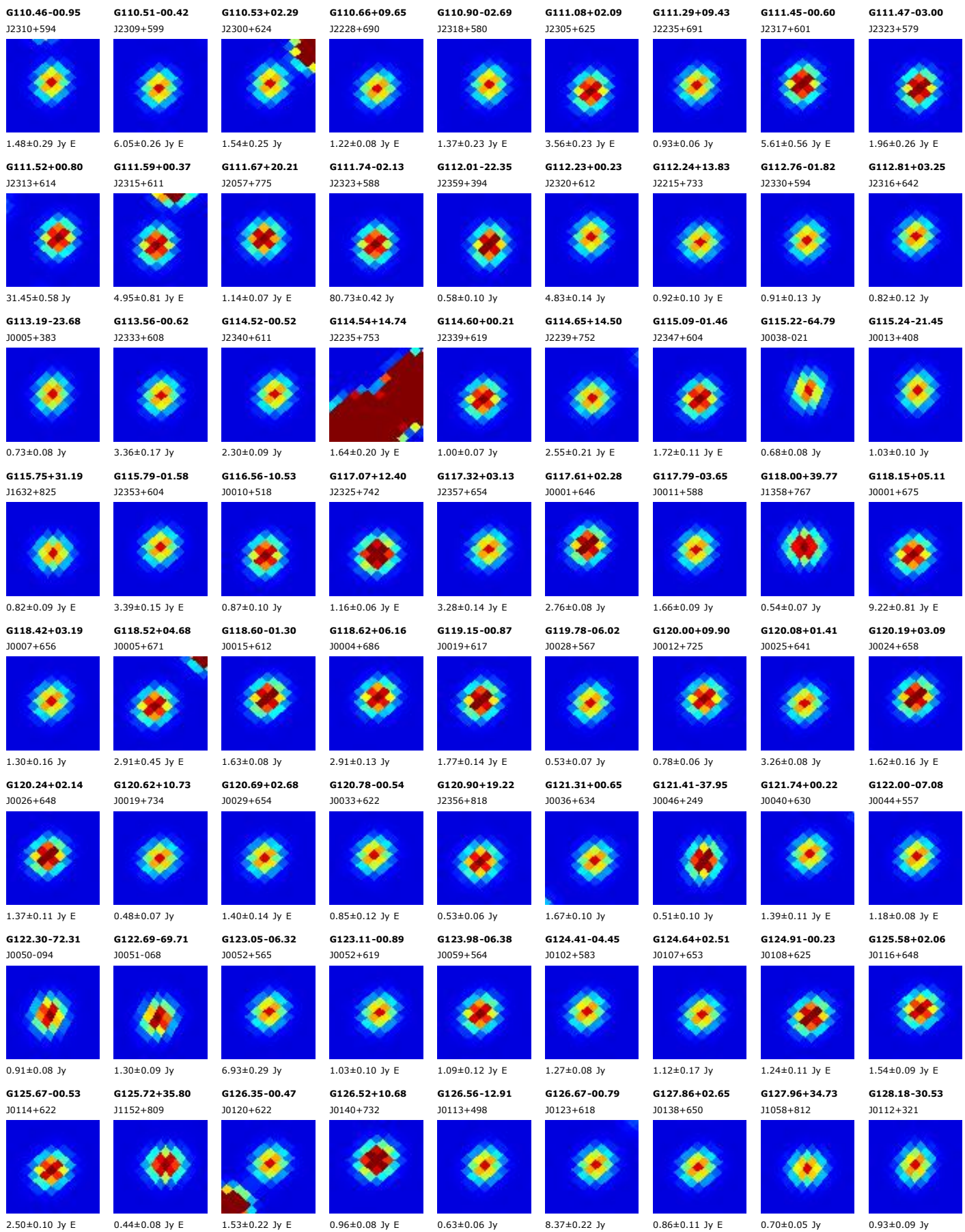
21.63±0.83 Jy

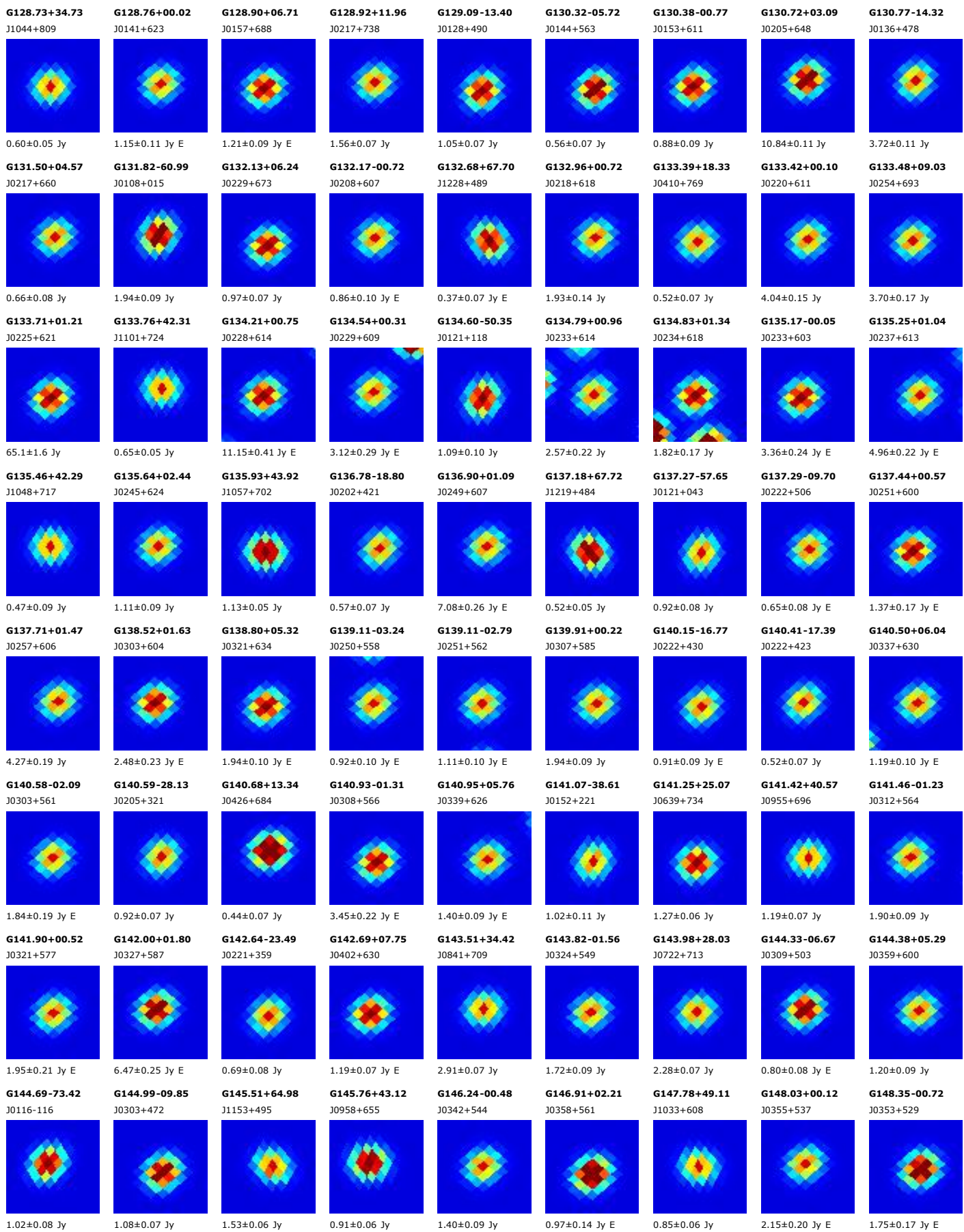


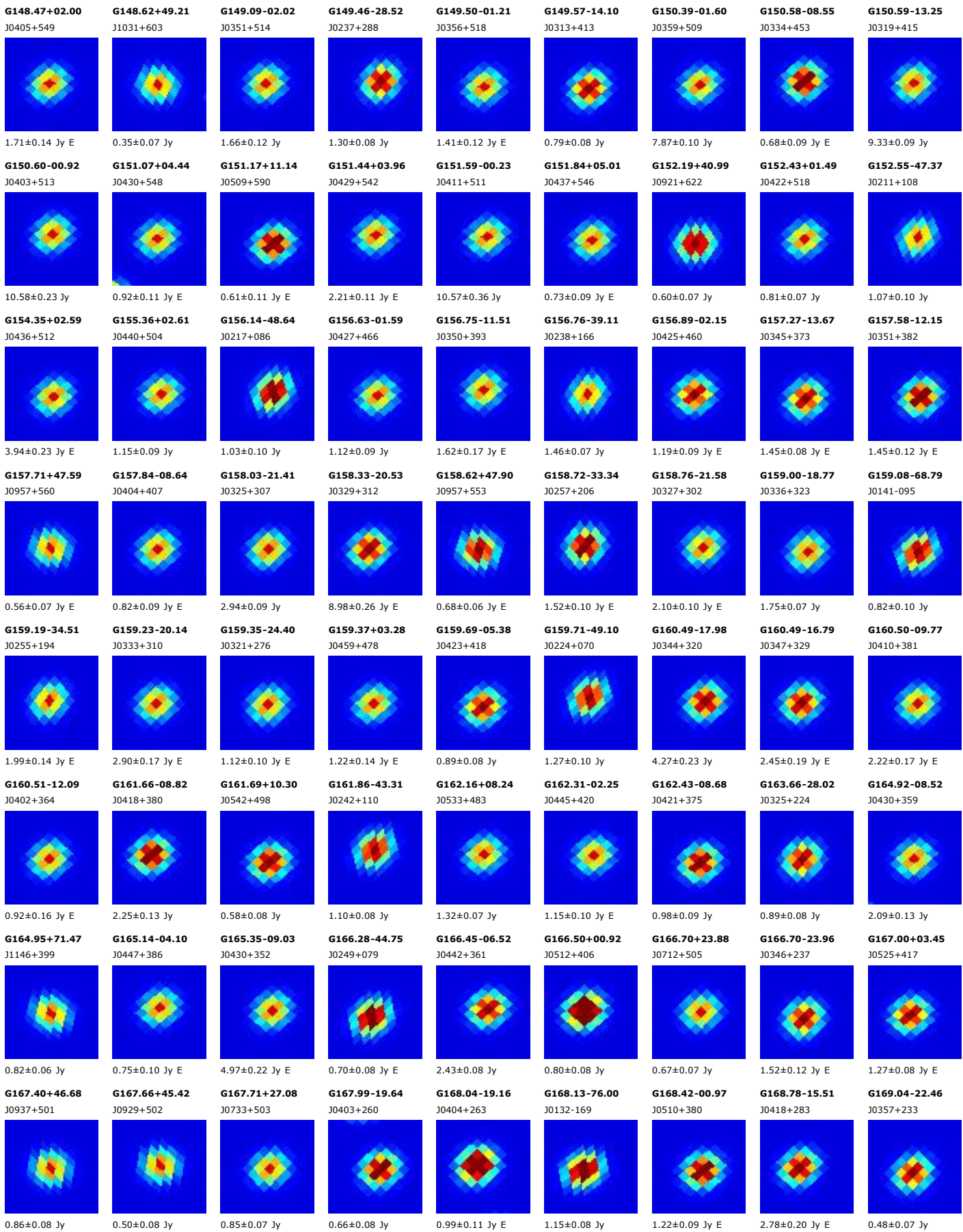


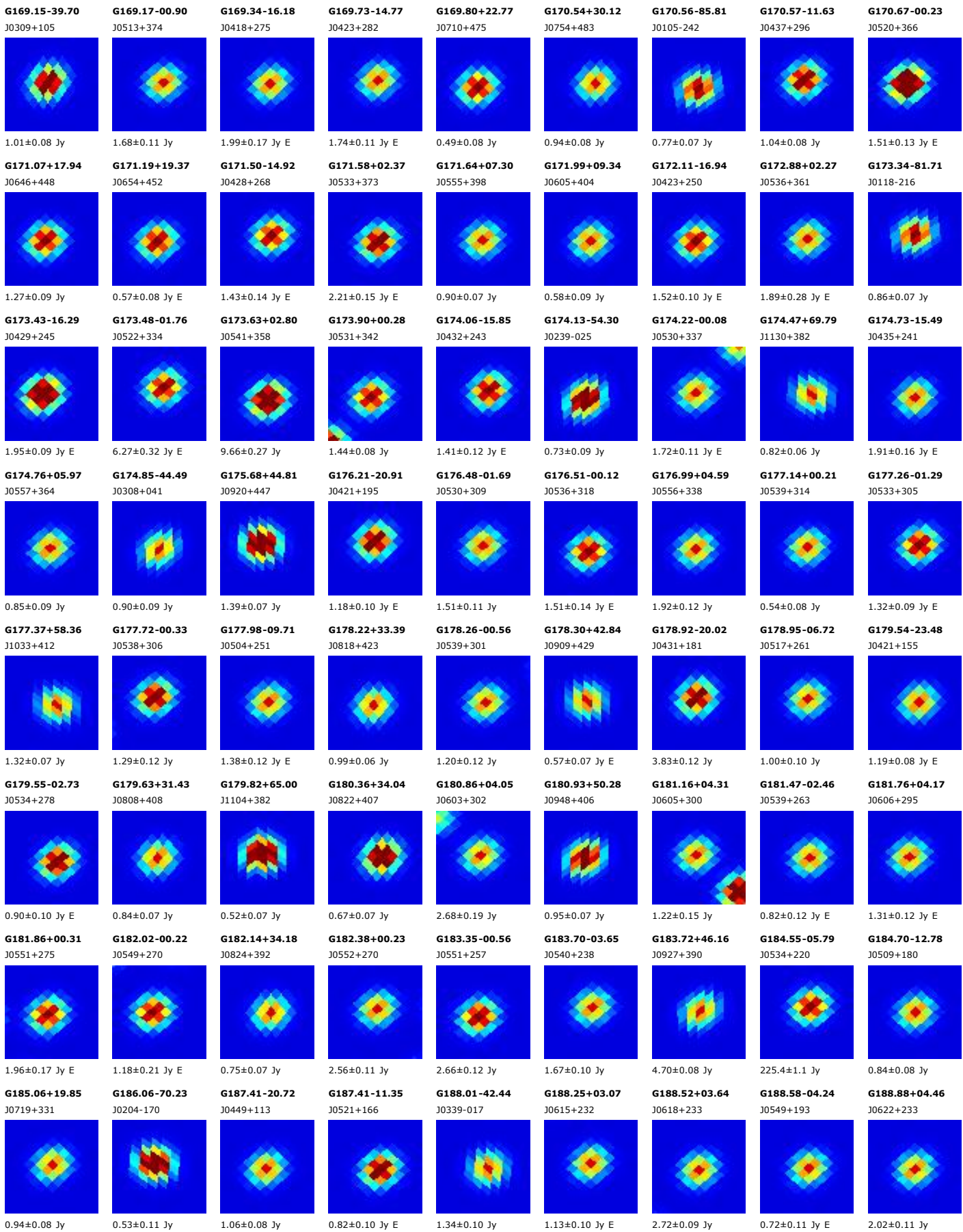


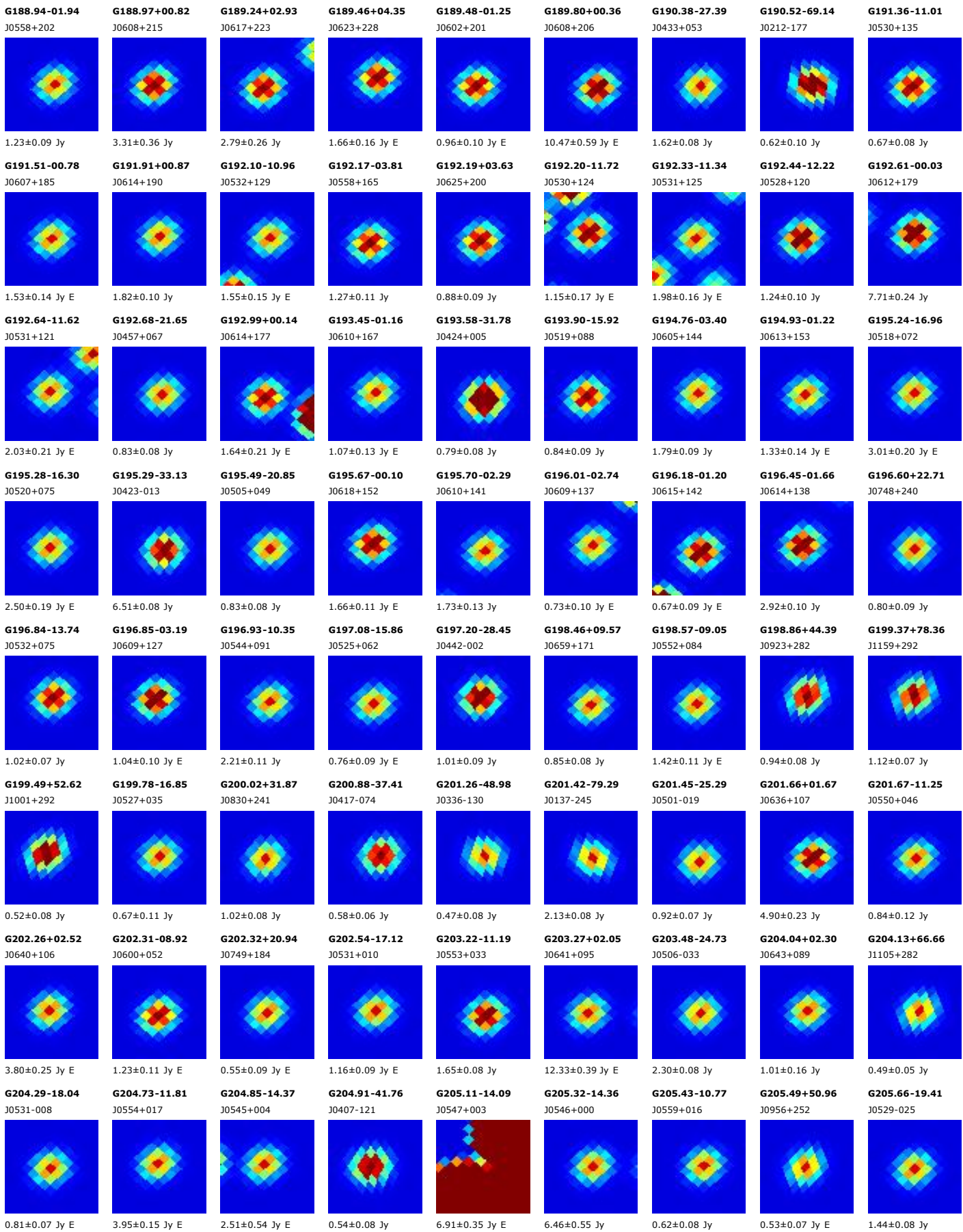


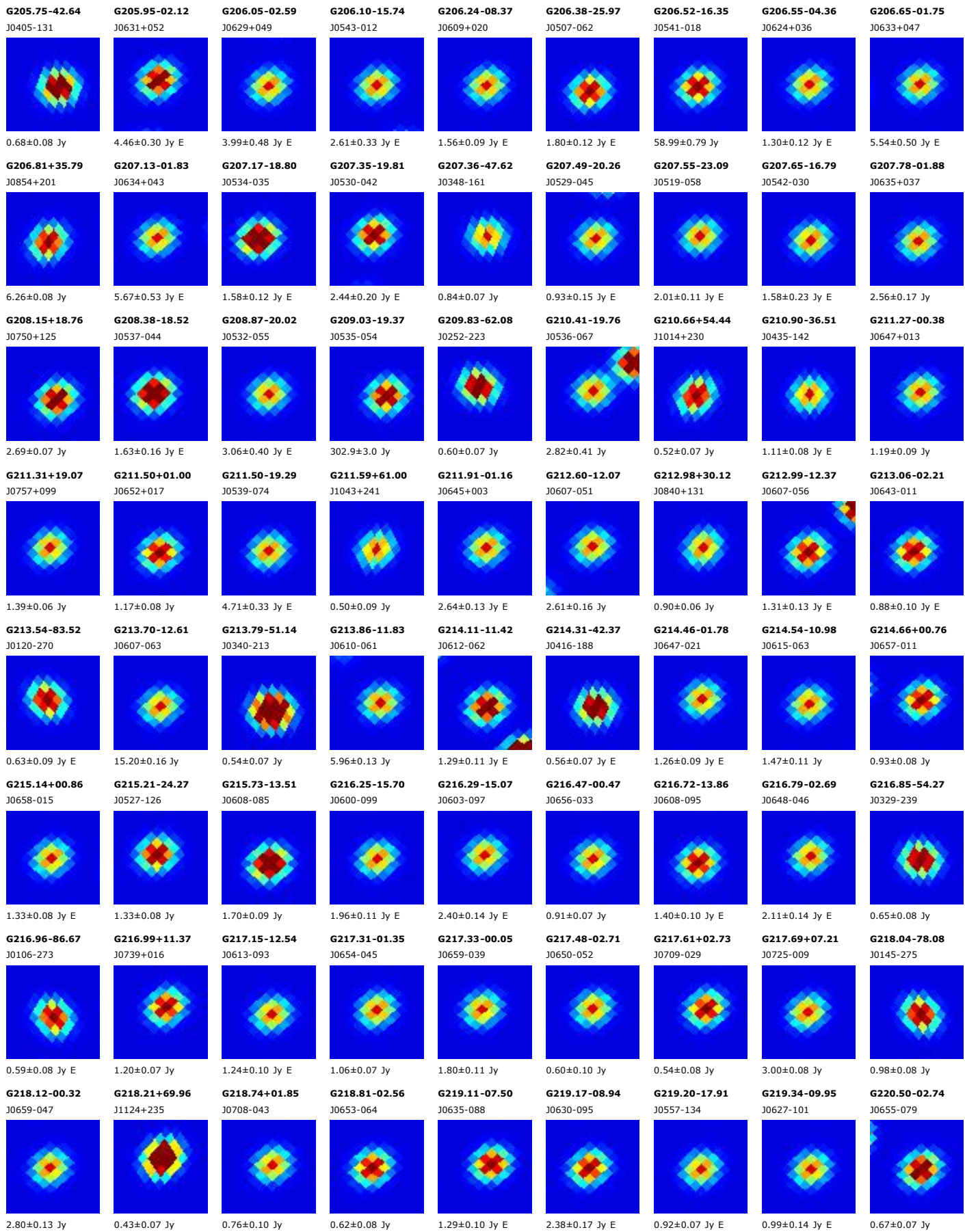


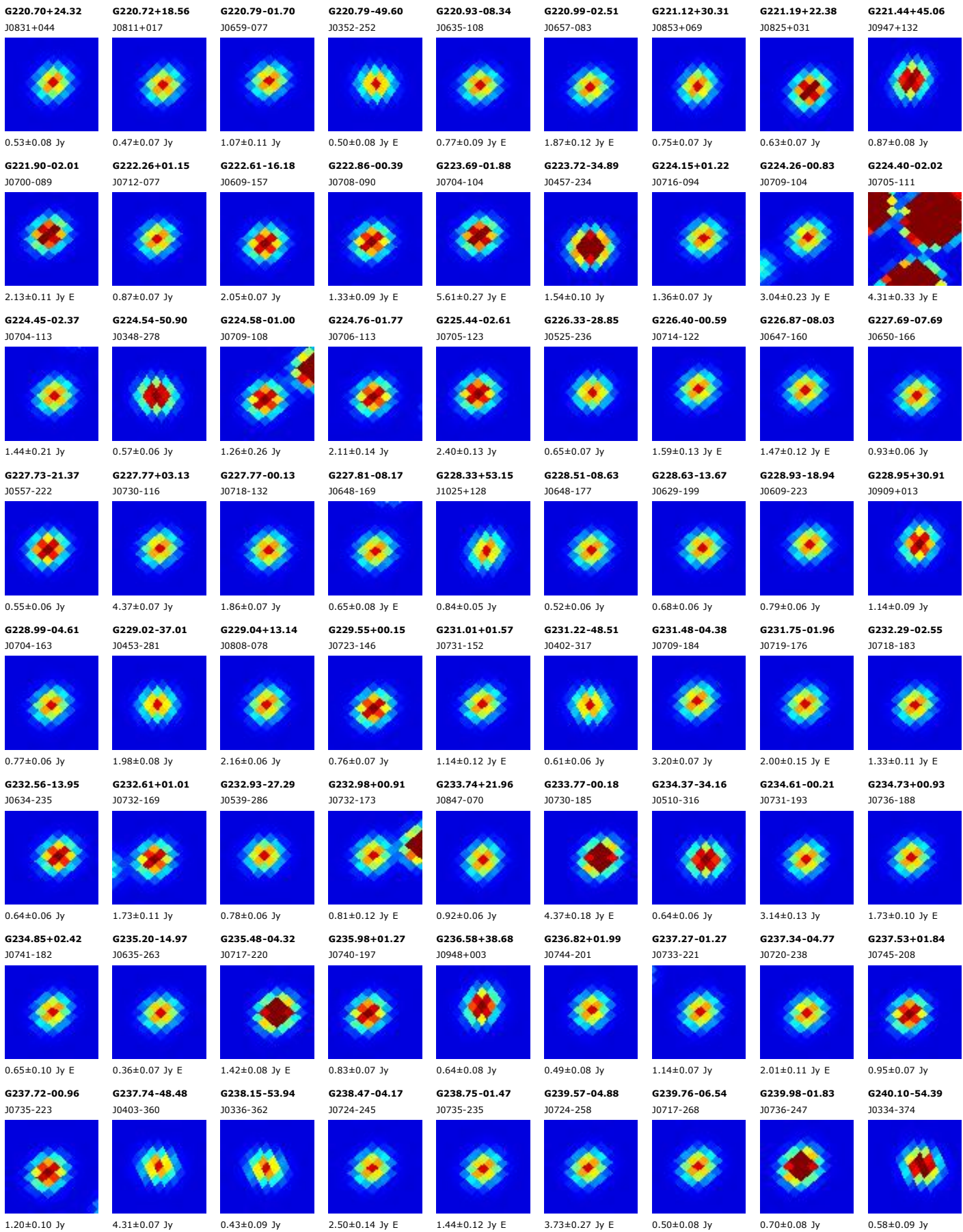


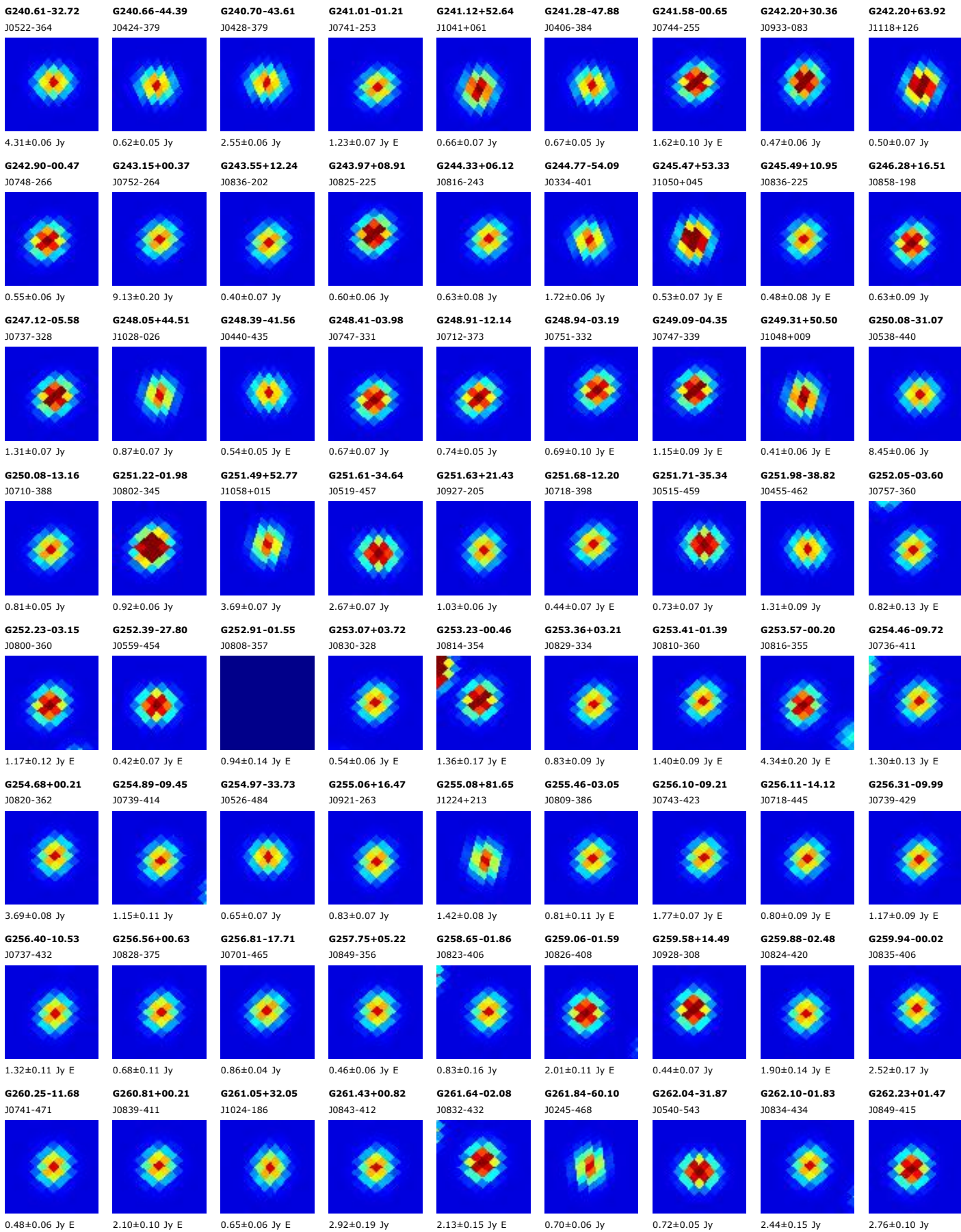


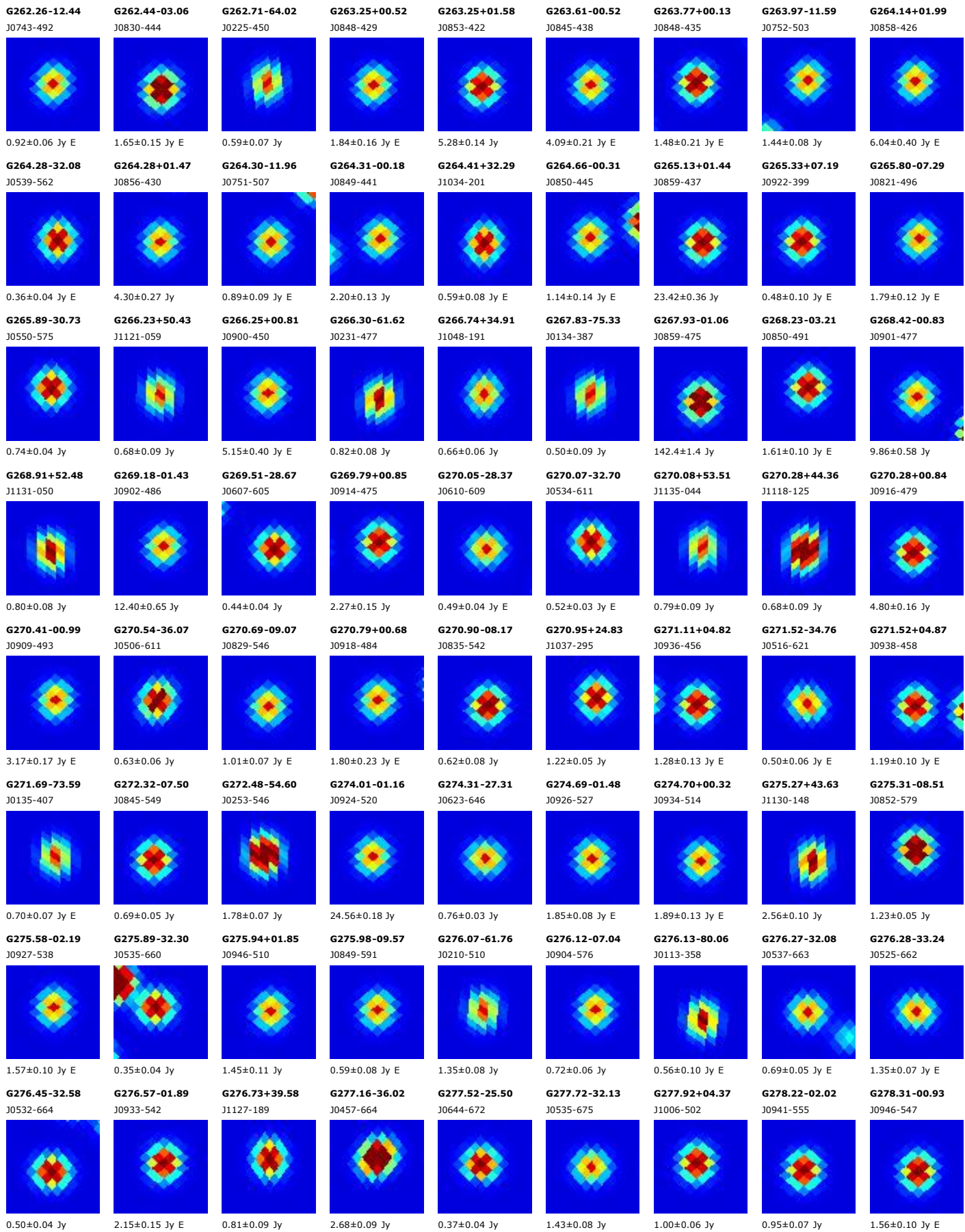


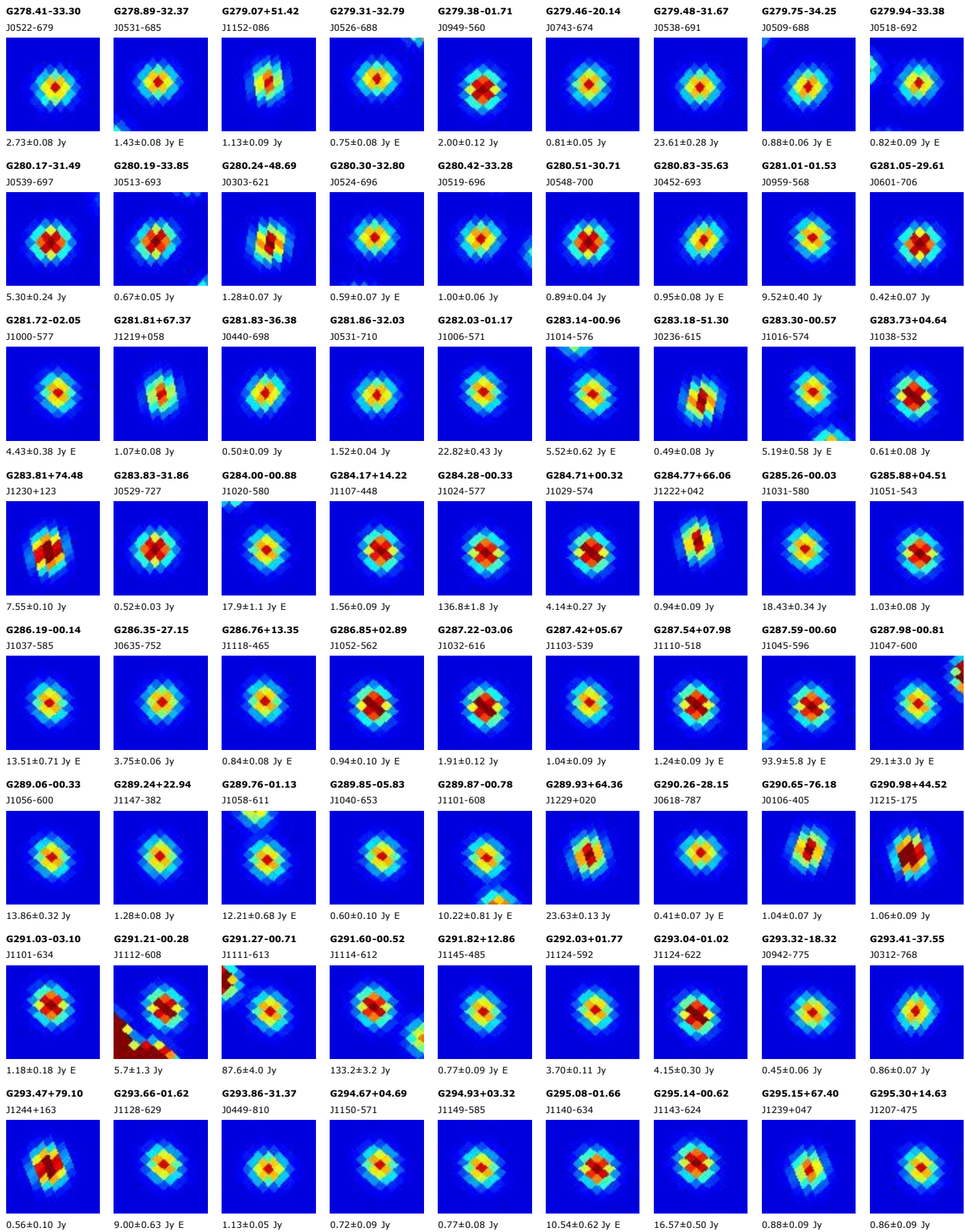


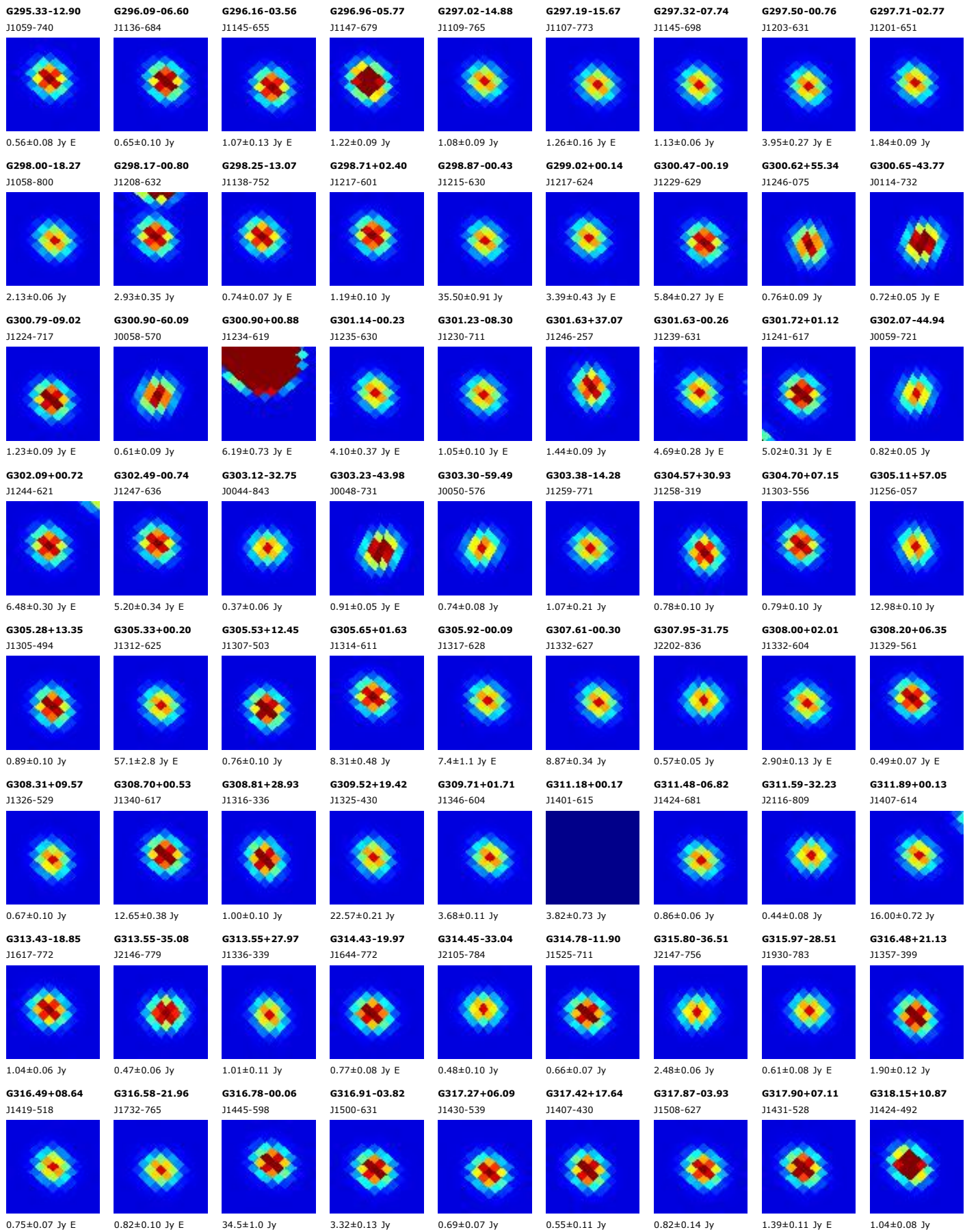


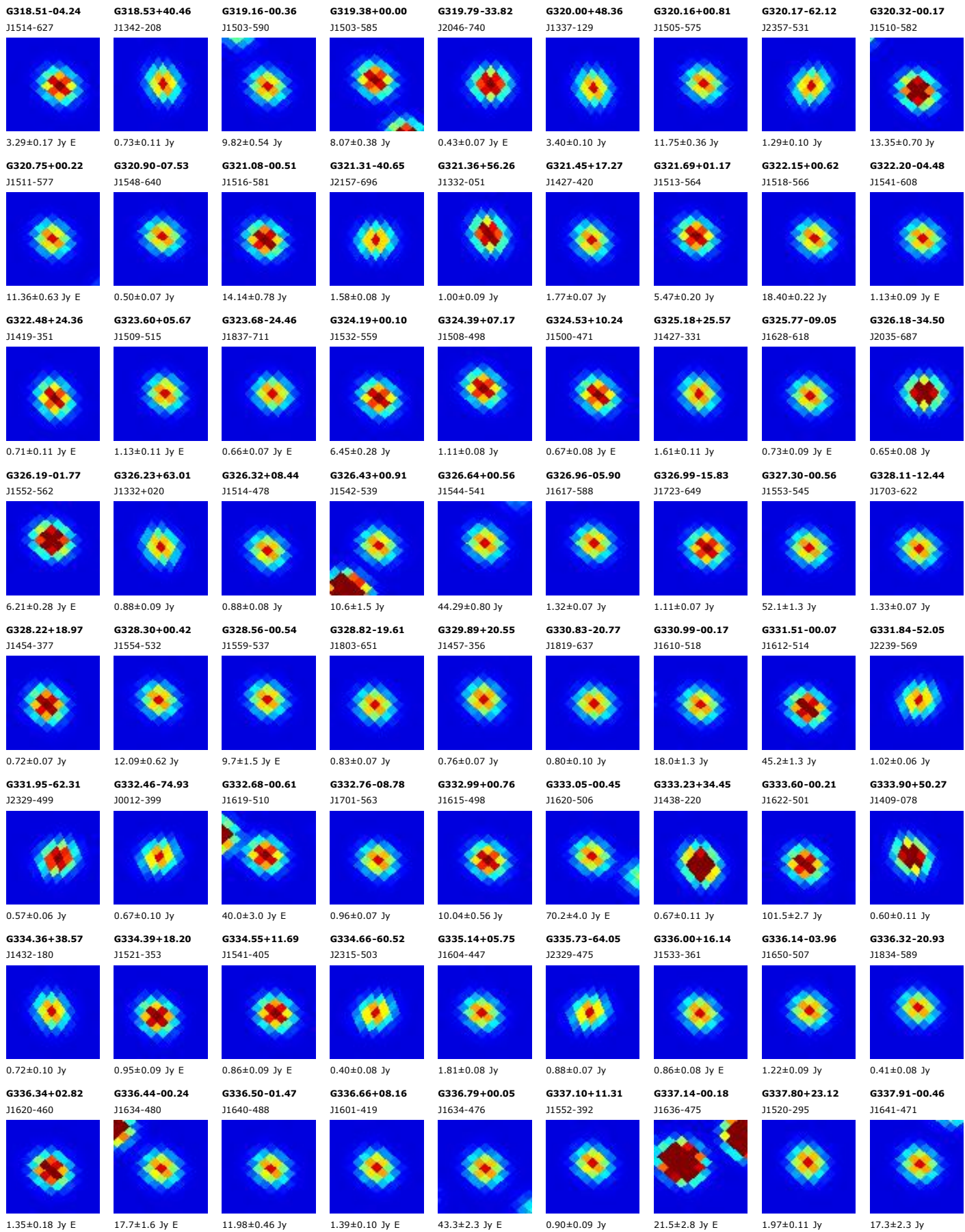


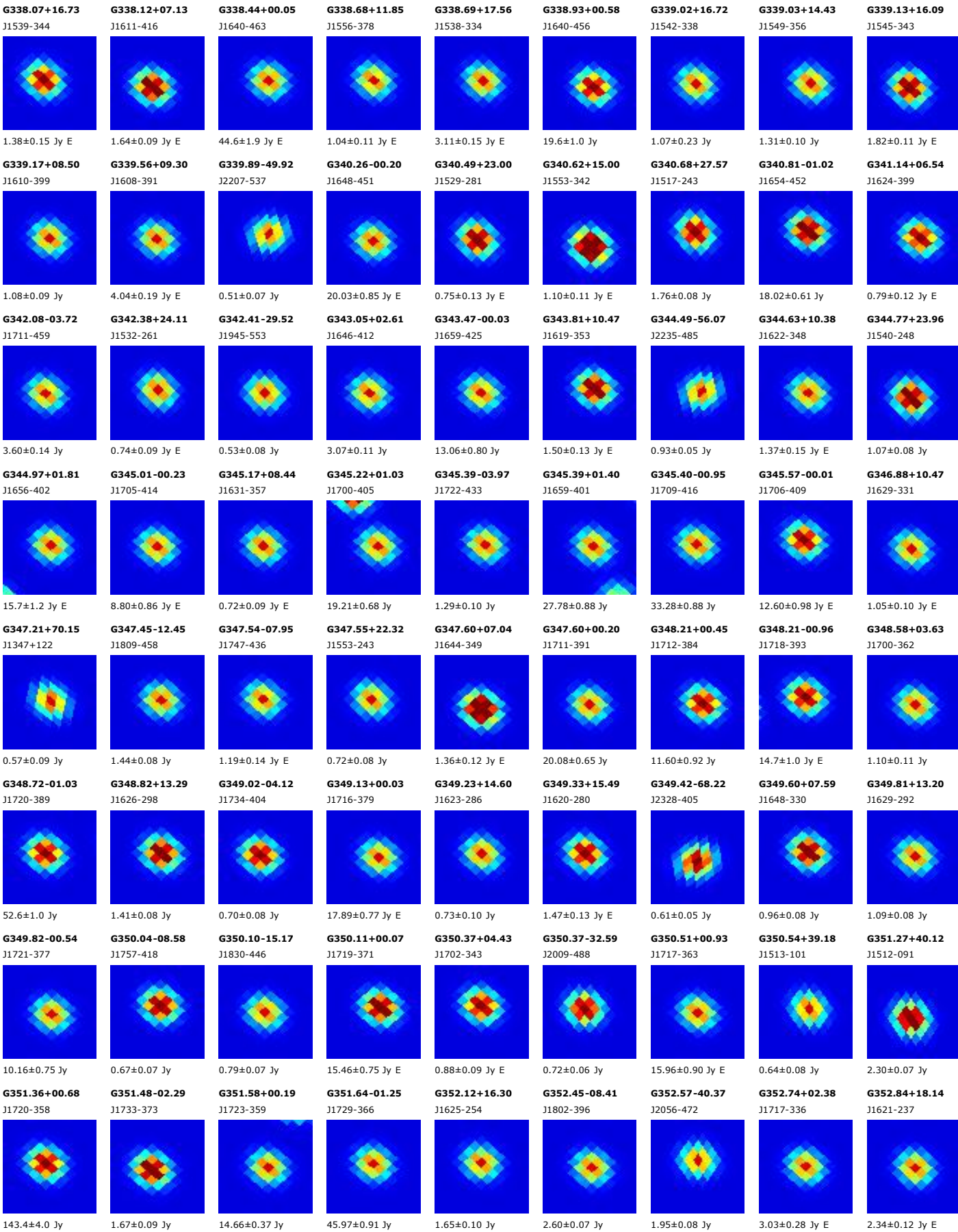




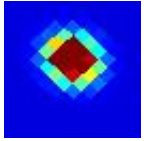






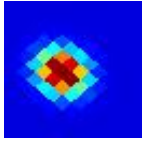


G353.05+16.94
J1626-243



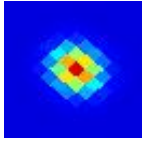
13.21±0.82 Jy E

G353.09+00.27
J1727-346



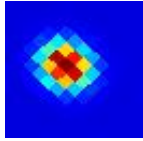
22.4±3.9 Jy

G353.20+00.89
J1724-341



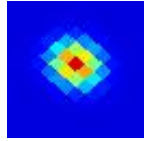
83.2±7.8 Jy E

G353.28+16.27
J1629-246



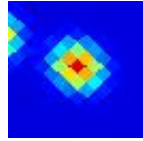
3.31±0.52 Jy E

G353.40-00.36
J1730-346



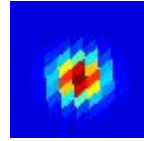
19.3±1.8 Jy E

G353.50+15.65
J1631-249



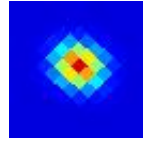
4.67±0.30 Jy E

G353.58-45.64
J2126-460



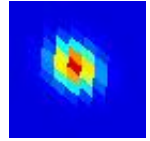
0.69±0.08 Jy E

G353.76+18.38
J1623-229



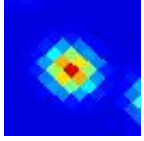
1.40±0.15 Jy E

G353.91+42.94
J1510-057



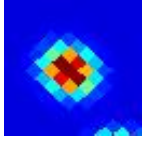
0.77±0.12 Jy

G353.92+15.84
J1632-244



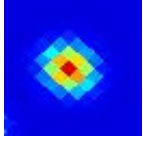
5.21±0.34 Jy

G354.18+16.31
J1631-239



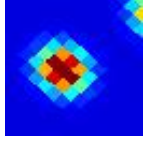
1.48±0.14 Jy E

G354.88+14.98
J1637-243



2.13±0.17 Jy E

G355.32+14.71
J1639-241



2.39±0.21 Jy E

G355.41+22.10
J1616-193



0.78±0.09 Jy

G355.45+22.58
J1614-189



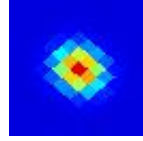
1.32±0.10 Jy E

G356.13+20.73
J1622-197



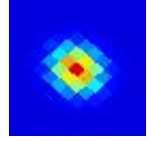
1.16±0.10 Jy E

G356.18+00.90
J1732-316



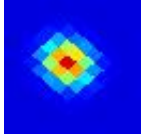
19.1±1.2 Jy E

G356.70+09.75
J1700-261



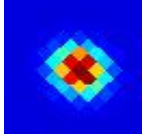
0.96±0.08 Jy

G357.07+07.13
J1711-274



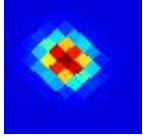
2.62±0.14 Jy E

G357.61+18.94
J1631-197



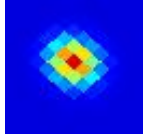
1.26±0.16 Jy E

G357.98+13.14
J1652-231



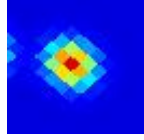
0.65±0.09 Jy

G358.50+05.47
J1721-272



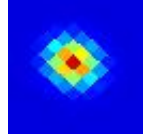
0.99±0.14 Jy E

G358.74-00.11
J1743-300



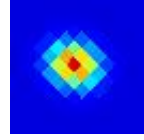
36.3±4.1 Jy E

G358.97+12.39
J1657-228



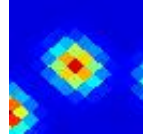
0.61±0.11 Jy

G359.14-25.36
J1937-399



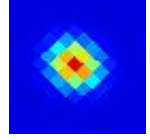
0.65±0.07 Jy

G359.19-00.03
J1743-296



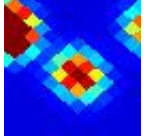
49.9±6.3 Jy

G359.54+17.54
J1641-192



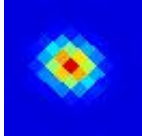
0.95±0.12 Jy E

G359.58-00.22
J1745-294



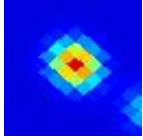
52.4±9.7 Jy E

G359.76-18.37
J1904-372



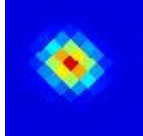
2.49±0.22 Jy E

G359.92-00.04
J1745-290



182.3±12.0 Jy E

G359.93-17.83
J1901-369



7.28±0.24 Jy