

Planck Early Release Compact Source Catalog

PLCKERC070 (70 GHz)

ILC model of CMB subtracted

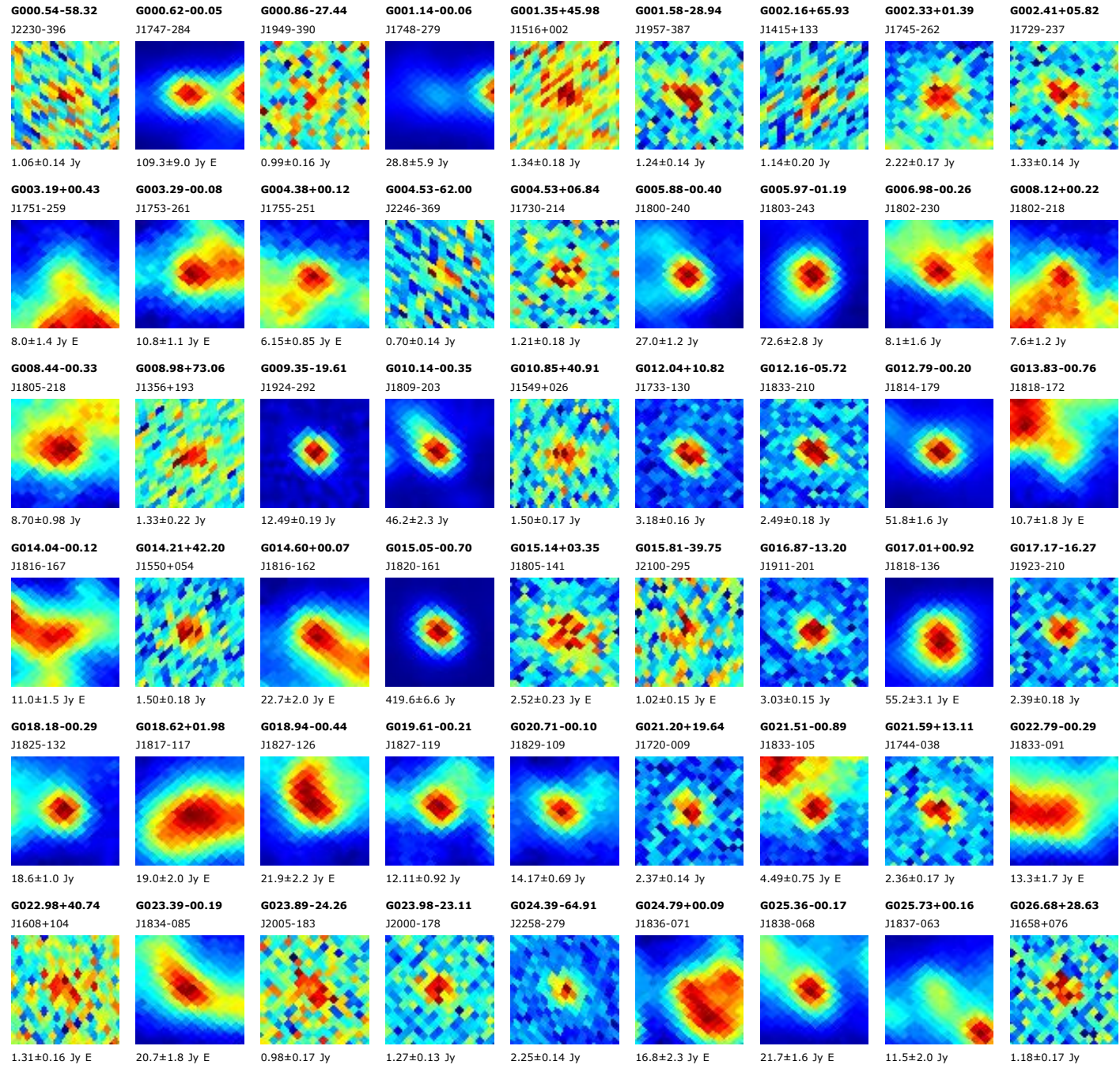
Catalog: ERCSC_f070.fits (599 sources) sorted by GLON

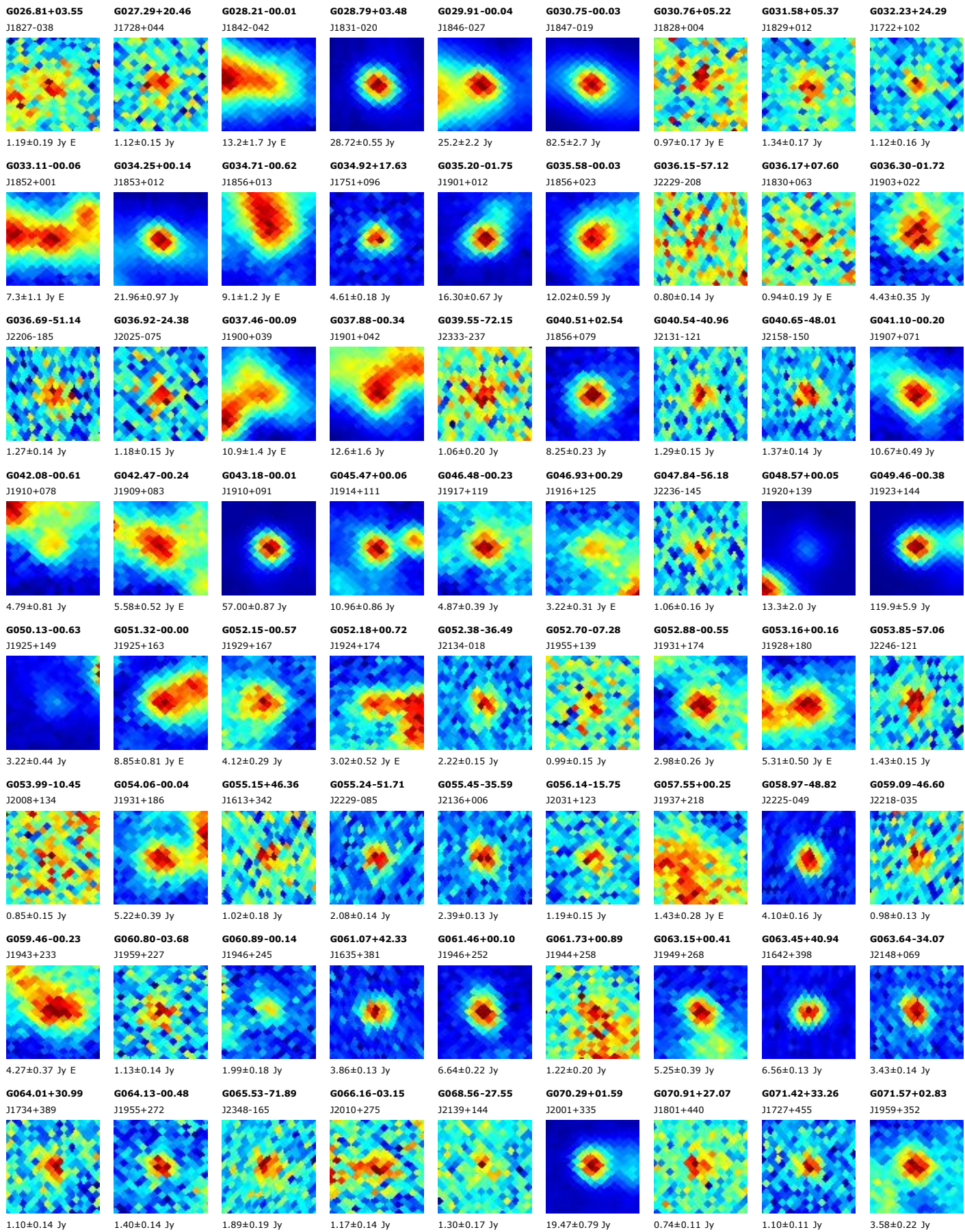
Origin: U.S. Planck Data Center

Date: 2010-11-17

Map: LFI_070.fits

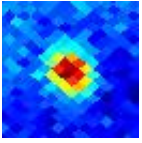
Image width: 0.87 deg





G073.13-02.35

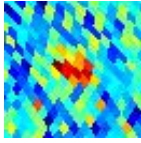
J2025+337



3.45±0.16 Jy

G073.44+41.88

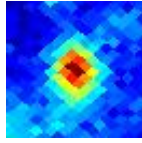
J1637+472



1.12±0.15 Jy

G074.77+00.61

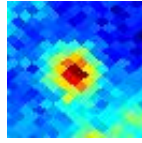
J2017+367



3.97±0.20 Jy

G074.87+01.22

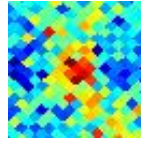
J2015+371



3.57±0.21 Jy

G075.54-08.77

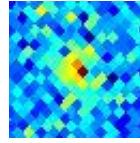
J2056+317



0.89±0.13 Jy

G075.67-29.64

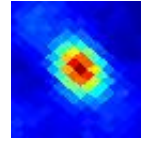
J2203+174



1.12±0.12 Jy

G075.81+00.37

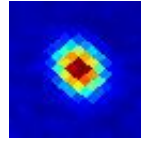
J2021+374



12.31±0.38 Jy

G076.20+05.74

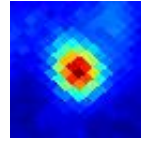
J1959+407



15.73±0.18 Jy

G076.38-00.61

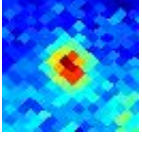
J2027+373



12.28±0.39 Jy

G076.82+04.31

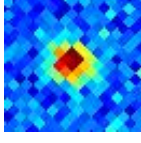
J2007+405



2.41±0.15 Jy

G077.20+23.49

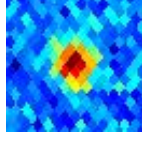
J1829+487



1.96±0.10 Jy

G077.43-38.58

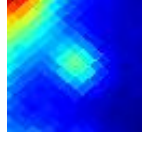
J2232+117



2.89±0.15 Jy

G078.04+00.61

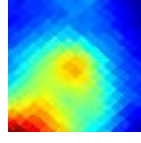
J2027+394



8.5±1.4 Jy E

G078.12+01.80

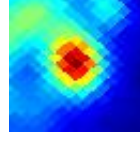
J2022+402



11.0±1.3 Jy E

G078.16-00.36

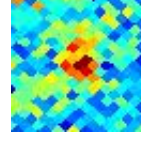
J2031+389



15.5±1.1 Jy

G078.30-04.87

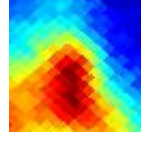
J2050+363



0.97±0.12 Jy

G078.33+02.77

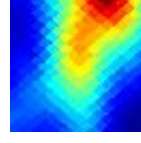
J2018+409



7.4±1.1 Jy E

G078.67+00.76

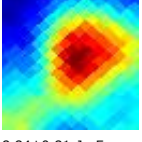
J2028+400



16.6±2.4 Jy E

G079.10+03.54

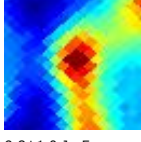
J2017+419



8.84±0.81 Jy E

G079.29+00.29

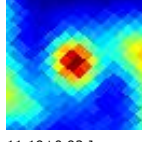
J2032+402



9.8±1.0 Jy E

G079.30+01.30

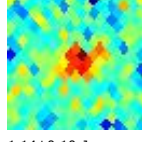
J2028+408



11.19±0.92 Jy

G079.58+31.74

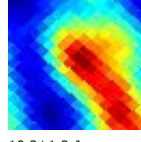
J1740+522



1.14±0.10 Jy

G080.06+01.50

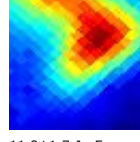
J2029+416



10.2±1.2 Jy

G080.19-00.15

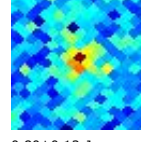
J2037+407



11.8±1.7 Jy E

G080.29-08.33

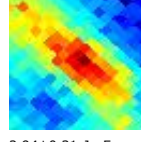
J2109+355



0.80±0.12 Jy

G080.37+04.73

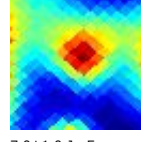
J2016+437



2.94±0.31 Jy E

G080.88+00.39

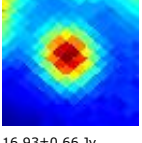
J2037+416



7.0±1.0 Jy E

G080.92-00.17

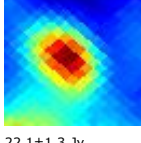
J2039+412



16.93±0.66 Jy

G081.29+01.15

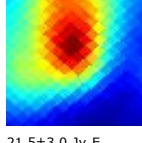
J2035+423



22.1±1.3 Jy

G081.58-00.03

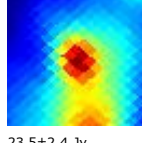
J2041+419



21.5±3.0 Jy E

G081.69+00.55

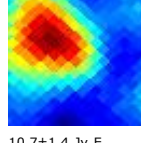
J2039+423



23.5±2.4 Jy

G082.07+02.30

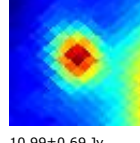
J2032+437



10.7±1.4 Jy E

G082.57+00.39

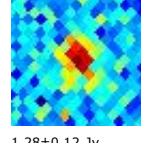
J2042+429



10.99±0.69 Jy

G083.16-30.06

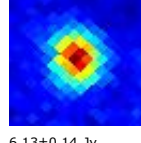
J2225+213



1.28±0.12 Jy

G083.78+03.29

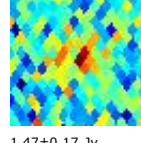
J2033+456



6.13±0.14 Jy

G084.46-40.25

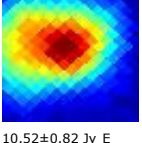
J2254+137



1.47±0.17 Jy

G084.81+03.80

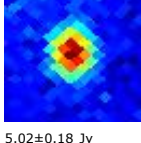
J2034+467



10.52±0.82 Jy E

G084.93-03.49

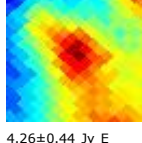
J2107+422



5.02±0.18 Jy

G085.05-00.20

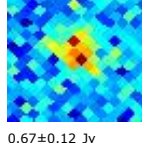
J2053+445



4.26±0.44 Jy E

G085.33+11.75

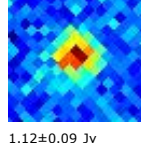
J1955+515



0.67±0.12 Jy

G085.73+26.09

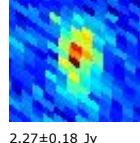
J1824+568



1.12±0.09 Jy

G085.86+83.33

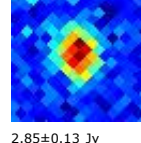
J1310+323



2.27±0.18 Jy

G085.95-18.77

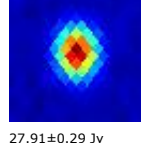
J2203+317



2.85±0.13 Jy

G086.12-38.18

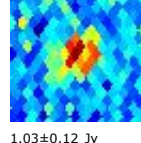
J2253+161



27.91±0.29 Jy

G086.63+40.38

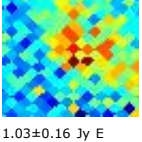
J1638+573



1.03±0.12 Jy

G088.17-04.28

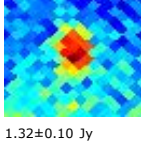
J2122+440



1.03±0.16 Jy E

G088.81+06.04

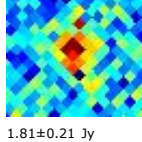
J2038+513



1.32±0.10 Jy

G090.11-25.64

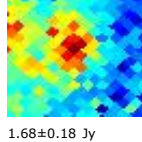
J2236+284



1.81±0.21 Jy

G090.25+01.68

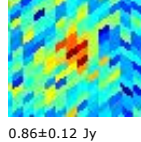
J2105+496



1.68±0.18 Jy

G090.51+57.52

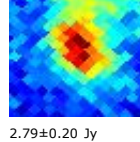
J1442+520



0.86±0.12 Jy

G091.09+01.57

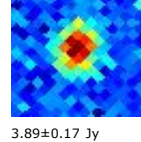
J2109+502



2.79±0.20 Jy

G092.58-10.43

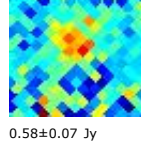
J2202+422



3.89±0.17 Jy

G092.71+19.41

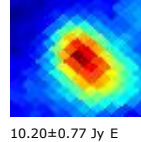
J1927+612



0.58±0.07 Jy

G093.06+02.84

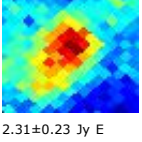
J2112+525



10.20±0.77 Jy E

G093.33+01.75

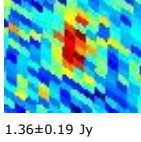
J2118+519



2.31±0.23 Jy E

G093.57-66.63

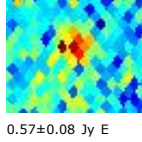
J0006-063



1.36±0.19 Jy

G094.07+37.93

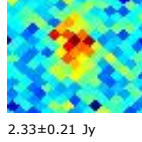
J1645+635



0.57±0.08 Jy E

G094.38-05.51

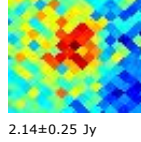
J2153+472



2.33±0.21 Jy

G094.47-01.52

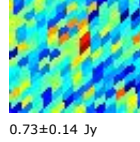
J2138+503



2.14±0.25 Jy

G095.46+45.89

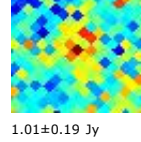
J1539+612



0.73±0.14 Jy

G095.65+00.26

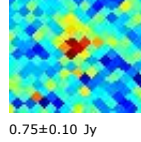
J2136+524



1.01±0.19 Jy

G096.06+13.77

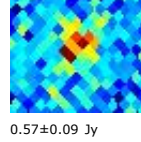
J2022+616



0.75±0.10 Jy

G096.44+29.95

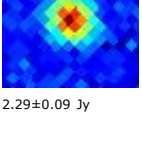
J1758+666



0.57±0.09 Jy

G097.50+25.03

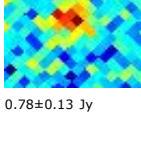
J1849+671



2.29±0.09 Jy

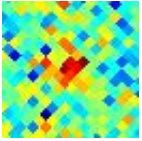
G097.63+16.72

J2006+644



G100.42-24.01

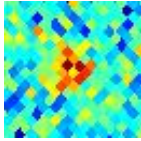
J2311+344



0.99±0.19 Jy

G100.50+30.71

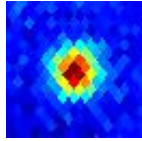
J1748+700



0.80±0.08 Jy E

G100.71+36.64

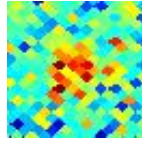
J1641+689



1.37±0.13 Jy

G101.05+02.54

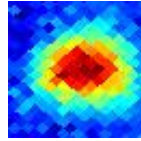
J2154+577



1.69±0.17 Jy

G102.92-00.67

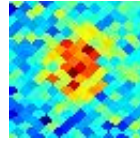
J2219+561



7.92±0.46 Jy E

G104.56+01.25

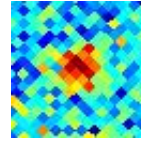
J2222+586



2.18±0.16 Jy E

G105.35+20.17

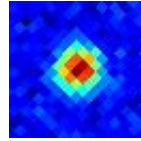
J2009+724



1.24±0.10 Jy

G105.63+23.54

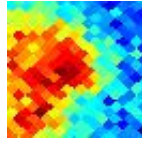
J1927+739



3.82±0.10 Jy

G106.82+05.31

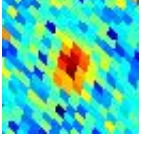
J2219+633



2.82±0.44 Jy E

G107.00-50.62

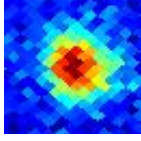
J0010+109



2.15±0.20 Jy

G107.16-00.95

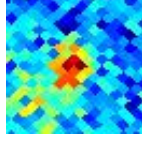
J2247+580



7.64±0.31 Jy

G108.18+00.59

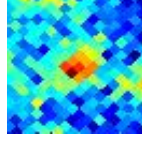
J2249+599



1.66±0.18 Jy

G108.78-00.96

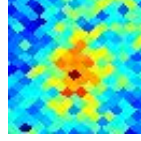
J2258+587



1.88±0.23 Jy

G109.01-00.23

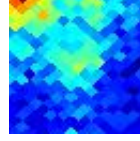
J2258+595



2.45±0.21 Jy E

G109.91+02.10

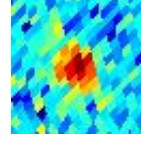
J2256+620



2.12±0.39 Jy E

G109.93+42.11

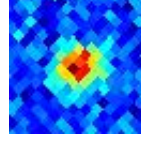
J1459+716



0.48±0.09 Jy

G110.05+29.07

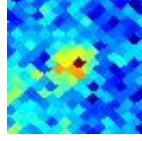
J1800+784



2.02±0.11 Jy

G110.10+00.05

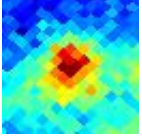
J2305+602



2.08±0.22 Jy

G110.25+02.58

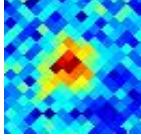
J2257+626



5.90±0.40 Jy

G110.45+22.72

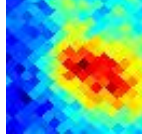
J2005+778



1.33±0.15 Jy E

G111.40-00.64

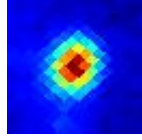
J2316+600



5.07±0.73 Jy E

G111.54+00.82

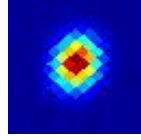
J2313+615



22.60±0.46 Jy

G111.74-02.13

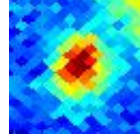
J2323+588



101.12±0.94 Jy

G112.23+00.23

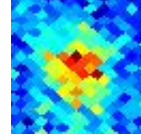
J2320+612



6.32±0.26 Jy

G113.57-00.65

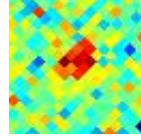
J2333+607



3.05±0.19 Jy E

G115.26-21.47

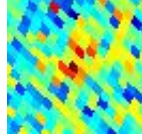
J0013+408



1.36±0.18 Jy

G115.27-64.84

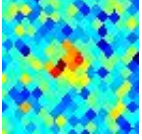
J0038-021



1.05±0.19 Jy

G115.72+31.21

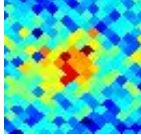
J1632+824



0.84±0.15 Jy

G115.79-01.58

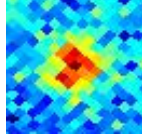
J2353+604



1.96±0.16 Jy E

G117.59+02.27

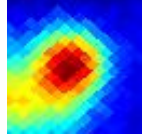
J0001+646



1.88±0.13 Jy

G118.05+04.96

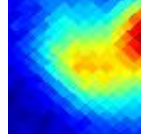
J0000+673



15.3±1.1 Jy

G118.57+04.76

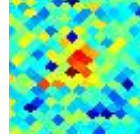
J0006+672



7.9±1.3 Jy E

G118.57-01.29

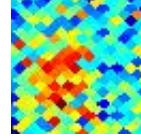
J0015+612



0.89±0.16 Jy

G119.28-00.87

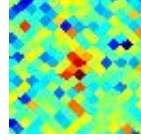
J0020+617



1.51±0.14 Jy E

G120.02+09.88

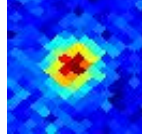
J0013+725



0.69±0.14 Jy

G120.07+01.41

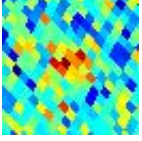
J0025+641



3.98±0.14 Jy

G122.79-69.72

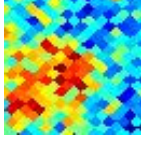
J0051-068



1.55±0.20 Jy

G123.05+02.96

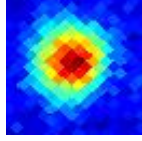
J0052+658



1.32±0.19 Jy E

G123.11-06.30

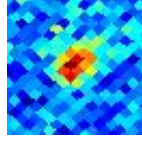
J0052+565



8.56±0.31 Jy E

G124.41-04.45

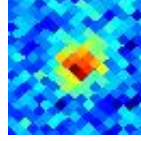
J0102+583



1.67±0.16 Jy

G126.67-00.79

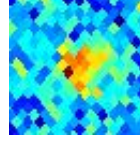
J0123+618



2.64±0.15 Jy

G127.98+34.76

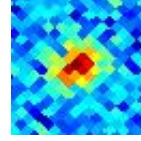
J1058+812



0.77±0.11 Jy

G128.91+11.97

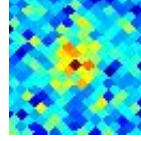
J0217+738



1.80±0.12 Jy

G129.09-13.44

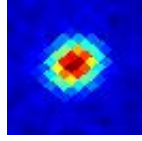
J0128+489



1.05±0.15 Jy

G130.71+03.07

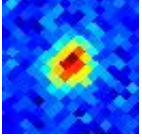
J0205+648



12.97±0.18 Jy

G130.79-14.33

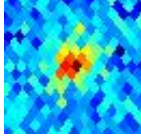
J0136+478



3.96±0.20 Jy

G131.82-60.99

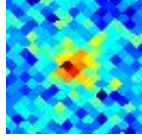
J0108+015



2.55±0.20 Jy

G132.13+06.24

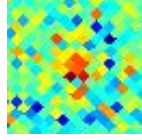
J0229+673



1.30±0.17 Jy

G133.42+18.35

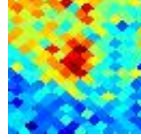
J0411+769



0.75±0.15 Jy

G133.43+00.08

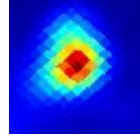
J0220+611



2.47±0.18 Jy

G133.72+01.19

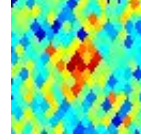
J0225+620



67.7±2.1 Jy

G133.72+42.31

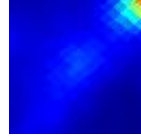
J1102+724



0.92±0.11 Jy

G134.26+00.74

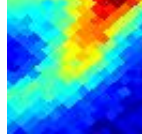
J0228+614



6.77±0.95 Jy

G134.56+00.23

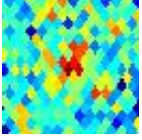
J0229+608



4.68±0.75 Jy E

G134.60-50.35

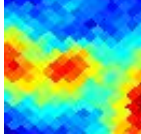
J0121+118



0.99±0.21 Jy

G134.80+00.93

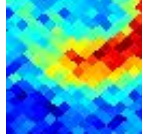
J0233+614



3.34±0.58 Jy E

G135.15-00.03

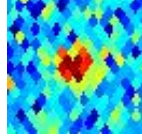
J0232+604



2.61±0.43 Jy E

G135.93+43.92

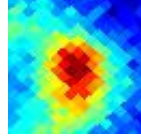
J1057+702



1.11±0.13 Jy

G136.89+01.03

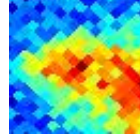
J0249+606



5.74±0.49 Jy E

G138.27+01.61

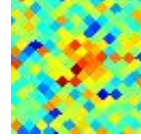
J0301+605



2.73±0.44 Jy E

G140.20-16.77

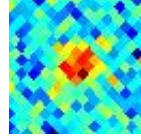
J0222+430



0.91±0.19 Jy

G140.57-28.11

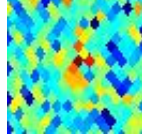
J0205+322



1.16±0.16 Jy

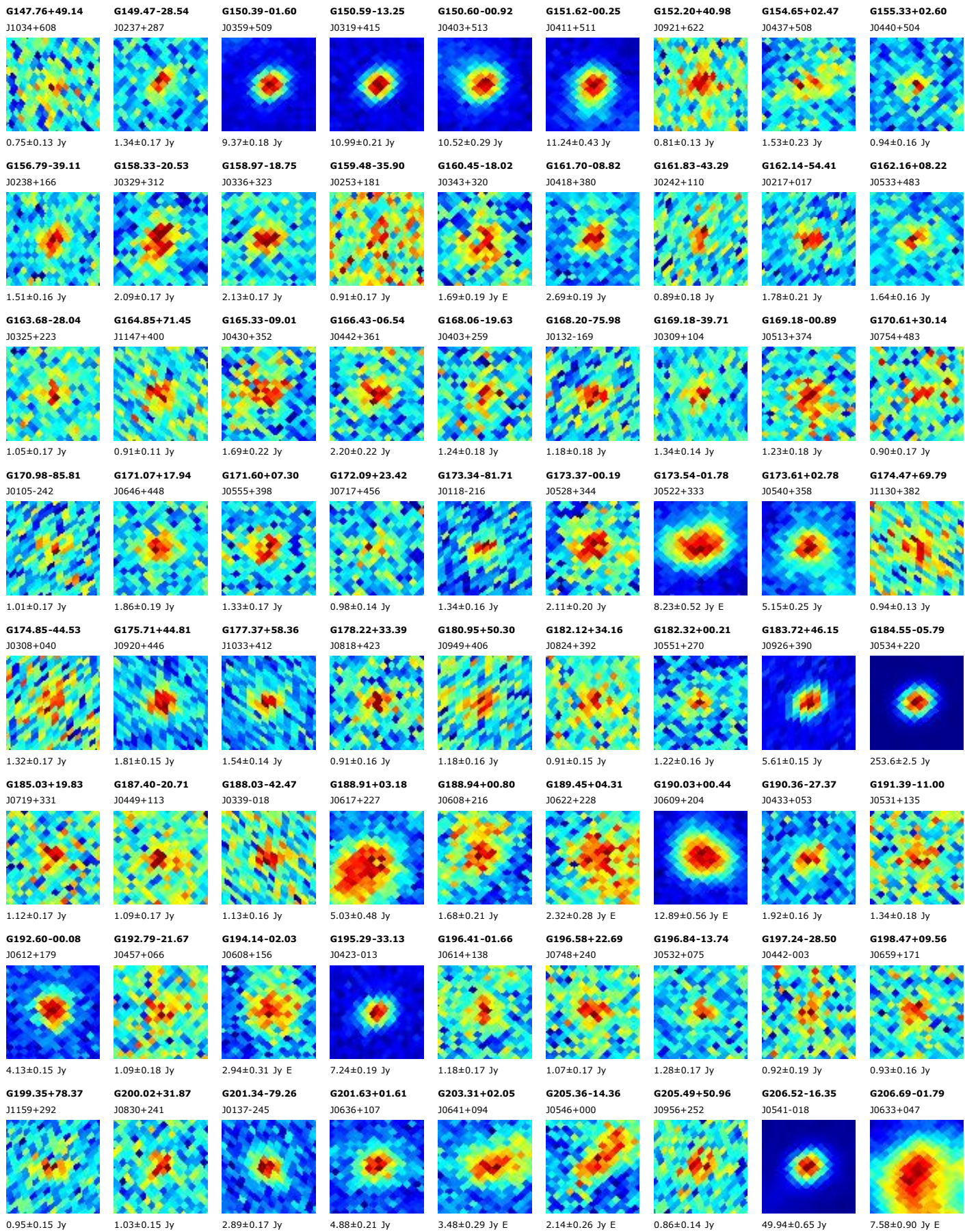
G141.08-38.56

J0152+221



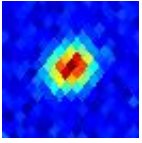
1.27±0.23 Jy

G14



G206.81+35.79

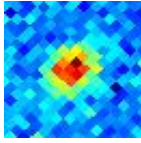
J0854+201



6.49±0.16 Jy

G208.15+18.75

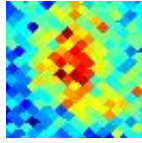
J0750+125



3.18±0.15 Jy

G208.78-02.65

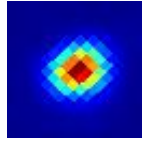
J0634+024



2.11±0.27 Jy E

G209.03-19.37

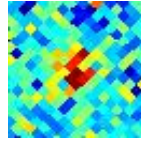
J0535-054



294.2±4.0 Jy

G211.28+19.05

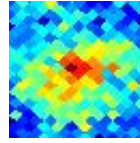
J0757+099



1.35±0.15 Jy

G211.95-01.16

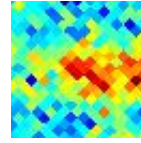
J0645+003



3.07±0.27 Jy E

G212.11-19.20

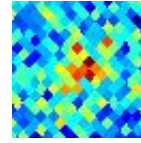
J0541-079



1.42±0.21 Jy E

G212.98+30.12

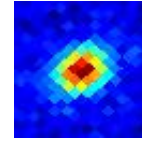
J0840+131



1.01±0.16 Jy

G213.70-12.60

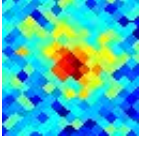
J0607-063



7.97±0.20 Jy

G213.87-11.85

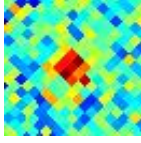
J0610-062



1.25±0.16 Jy

G215.19-24.30

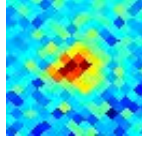
J0527-126



1.15±0.16 Jy

G215.74-13.53

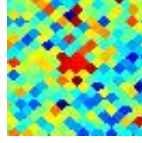
J0607-085



2.24±0.16 Jy

G216.47-00.47

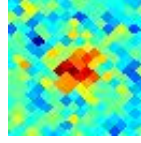
J0656-033



0.93±0.16 Jy

G216.97+11.40

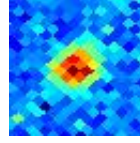
J0739+016



1.25±0.15 Jy

G217.67+07.23

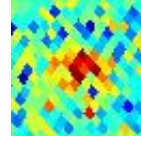
J0725-008



3.11±0.16 Jy

G218.04-78.08

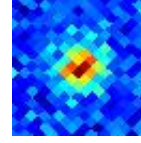
J0145-275



1.09±0.18 Jy

G222.61-16.18

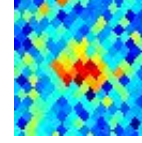
J0609-157



2.42±0.14 Jy

G223.69-34.87

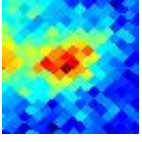
J0457-233



1.52±0.19 Jy

G223.69-01.91

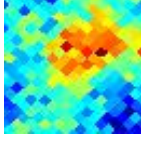
J0704-104



3.30±0.32 Jy

G224.34-02.01

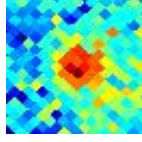
J0705-110



1.83±0.24 Jy E

G225.45-02.59

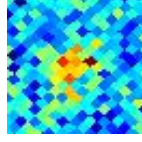
J0705-123



1.20±0.18 Jy

G227.68-07.72

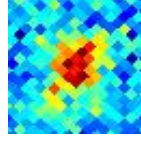
J0650-166



1.37±0.14 Jy

G227.75-00.11

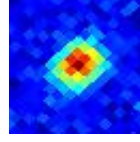
J0718-132



2.39±0.17 Jy

G227.77+03.13

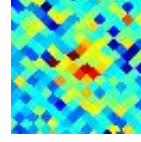
J0730-116



5.09±0.15 Jy

G228.65-13.64

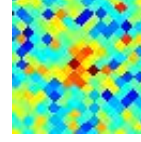
J0629-199



1.04±0.15 Jy E

G228.91-18.96

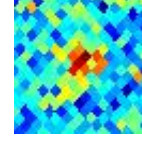
J0608-223



0.83±0.16 Jy

G228.93+30.89

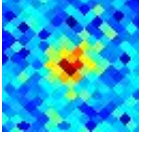
J0909+013



1.14±0.18 Jy E

G229.04+13.18

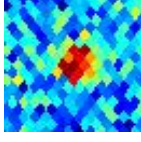
J0808-078



2.11±0.14 Jy

G229.04-37.01

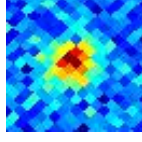
J0453-281



1.80±0.16 Jy

G231.46-04.40

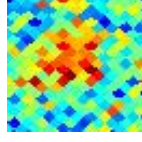
J0709-184



2.33±0.13 Jy

G232.56+00.89

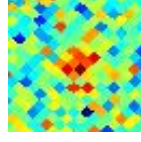
J0731-169



0.95±0.16 Jy E

G232.58-13.93

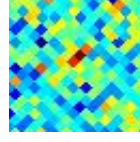
J0635-235



0.75±0.14 Jy

G233.67+21.98

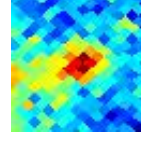
J0847-069



0.99±0.14 Jy

G233.77-00.18

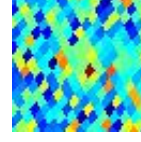
J0730-185



1.83±0.20 Jy

G235.56-51.54

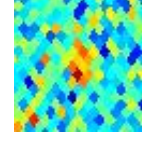
J0348-347



0.99±0.14 Jy

G236.56+38.70

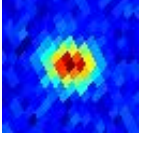
J0948+003



0.72±0.14 Jy

G237.75-48.47

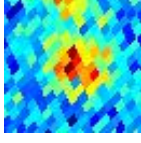
J0403-360



4.46±0.14 Jy

G240.14-56.90

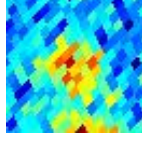
J0321-371



1.61±0.16 Jy

G240.21-56.40

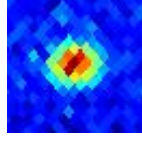
J0324-372



1.51±0.16 Jy

G240.58-32.71

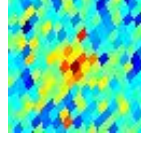
J0522-364



4.15±0.13 Jy

G240.67-44.38

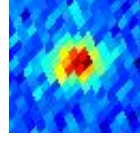
J0424-379



0.76±0.13 Jy

G240.70-43.61

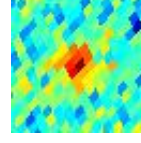
J0428-379



2.94±0.14 Jy

G241.28-47.88

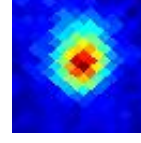
J0406-384



1.01±0.12 Jy

G243.16+00.39

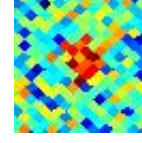
J0752-264



9.38±0.30 Jy

G244.00+08.87

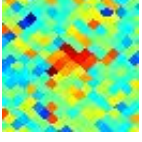
J0825-225



0.69±0.12 Jy

G244.34+06.10

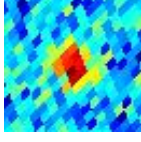
J0816-243



0.93±0.14 Jy

G244.77-54.05

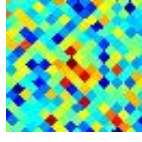
J0334-401



1.89±0.13 Jy

G245.36-20.14

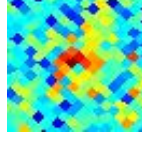
J0629-372



0.81±0.14 Jy

G245.54+10.91

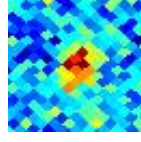
J0836-226



0.80±0.12 Jy

G248.41-03.98

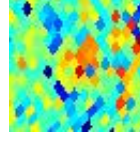
J0747-331



0.59±0.13 Jy

G248.43-41.55

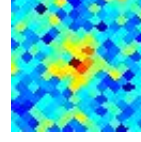
J0440-435



0.67±0.12 Jy

G250.06-13.17

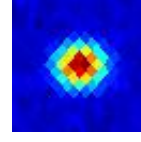
J0710-388



0.87±0.11 Jy

G250.08-31.07

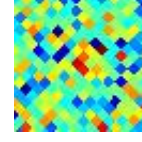
J0538-440



9.32±0.13 Jy

G250.22+24.04

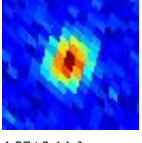
J0932-178



0.84±0.14 Jy E

G251.49+52.77

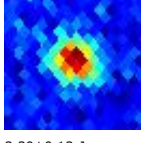
J1058+015



4.27±0.14 Jy

G251.61-34.64

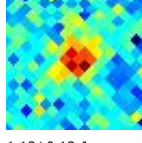
J0519-457



3.30±0.13 Jy

G251.65+21.41

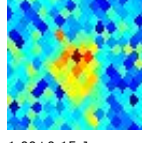
J0927-205



1.13±0.13 Jy

G251.76-35.35

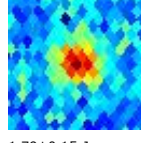
J0515-459



1.00±0.15 Jy

G251.97-38.80

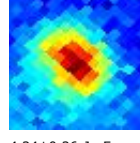
J0455-462



1.79±0.15 Jy

G253.62-00.21

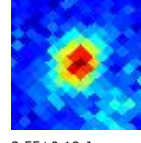
J0816-355



4.24±0.26 Jy E

G254.66+00.23

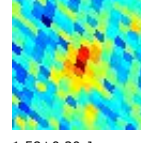
J0820-362



3.55±0.19 Jy

G255.00+81.65

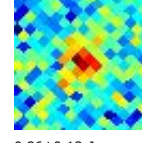
J1224+213



1.58±0.20 Jy

G255.06+16.47

J0921-263



0.86±0.13 Jy

G256.79-17.67

