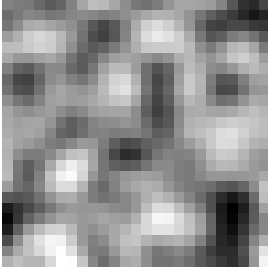
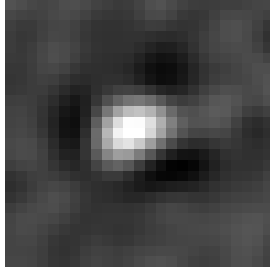


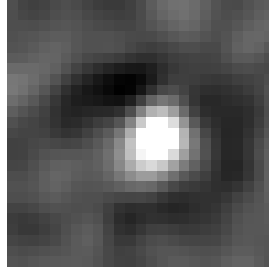
DAISY
-2.56 mJy
S/N=-0.88
131.8545-0.9427



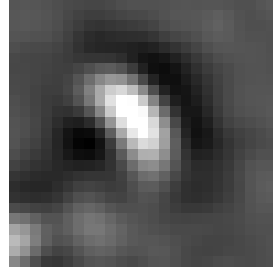
DAISY
194 mJy
S/N=28
132.3656-1.0221



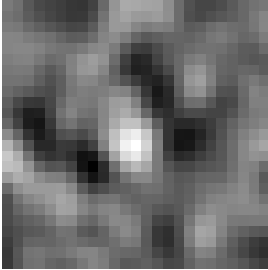
DAISY
228 mJy
S/N=43
136.7211+0.7806



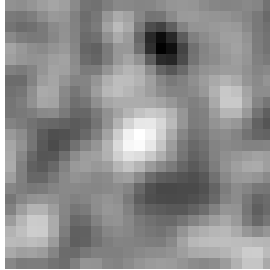
DAISY
137 mJy
S/N=48
137.4811+0.6386



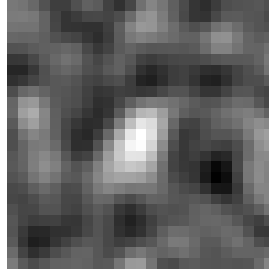
PONG
186 mJy
S/N=4.7
131.8545-0.9427



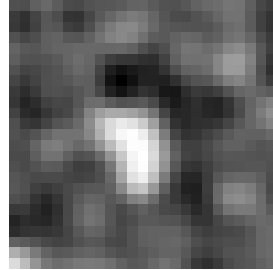
PONG
162 mJy
S/N=4.4
132.3656-1.0221



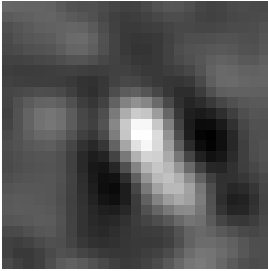
PONG
239 mJy
S/N=5.1
136.7211+0.7821



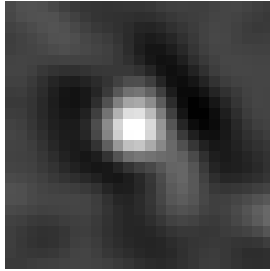
PONG
213 mJy
S/N=5.3
137.4811+0.6386



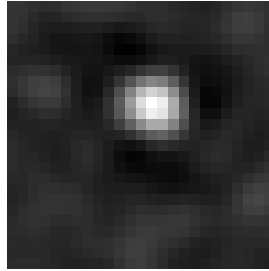
DAISY
198 mJy
S/N=26
137.6199+1.3551



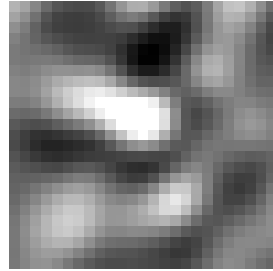
DAISY
329 mJy
S/N=44
137.5388+1.2773



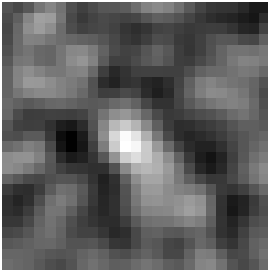
DAISY
27.8 mJy
S/N=3.6
125.5129+2.0263



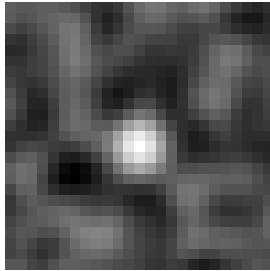
DAISY
149 mJy
S/N=20
126.6965-0.7443



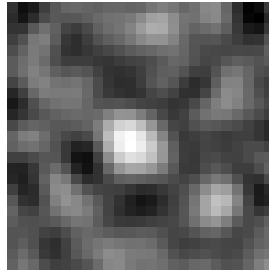
PONG
227 mJy
S/N=5.2
137.6199+1.3551



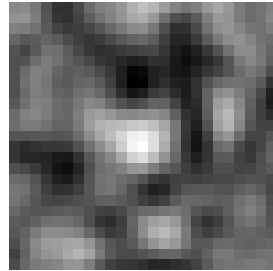
PONG
401 mJy
S/N=6.9
137.5388+1.2773



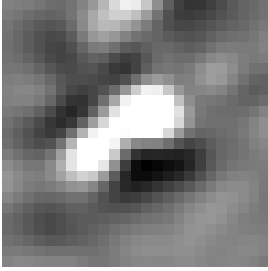
PONG
202 mJy
S/N=5.4
125.5129+2.0263



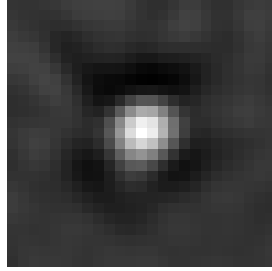
PONG
222 mJy
S/N=5.6
126.6965-0.7443



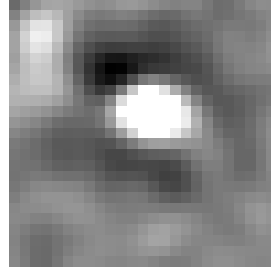
DAISY
243 mJy
S/N=33
126.6734-0.8077



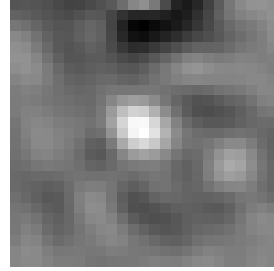
DAISY
280 mJy
S/N=37
126.4266-1.2342



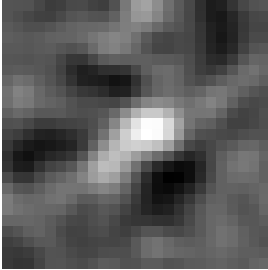
DAISY
92.8 mJy
S/N=12
126.8855-1.0530



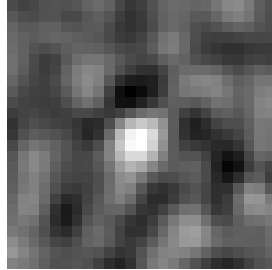
DAISY
119 mJy
S/N=11
120.2479+2.1464



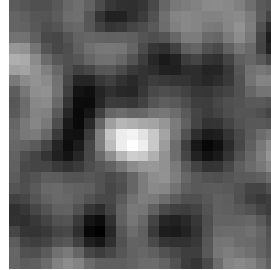
PONG
279 mJy
S/N=6.4
126.6734-0.8077



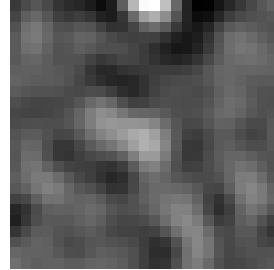
PONG
206 mJy
S/N=6.5
126.4266-1.2342



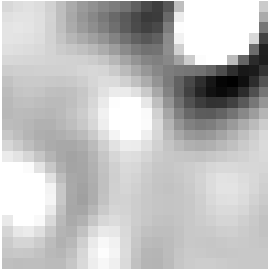
PONG
213 mJy
S/N=6.4
126.8855-1.0530



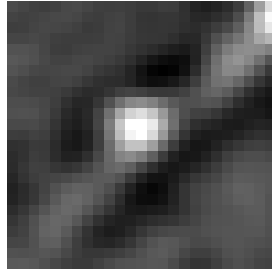
PONG
166 mJy
S/N=4.6
120.2479+2.1464



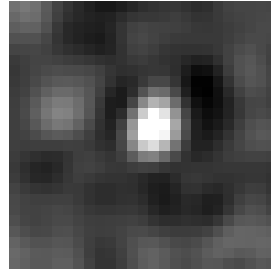
DAISY
115 mJy
S/N=11
121.3056+0.6455



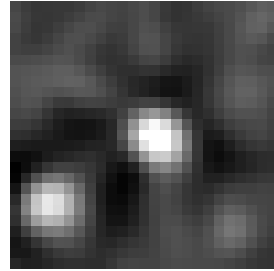
DAISY
190 mJy
S/N=18
120.4827+2.7384



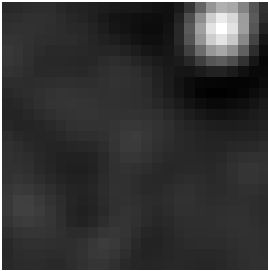
DAISY
220 mJy
S/N=17
136.8456+1.1497



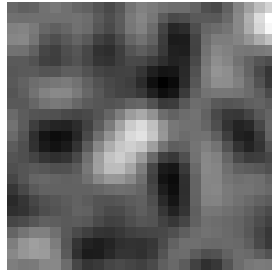
DAISY
190 mJy
S/N=19
120.5427+2.7028



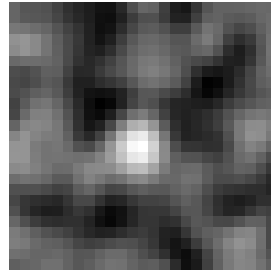
PONG
192 mJy
S/N=4.7
121.3056+0.6455



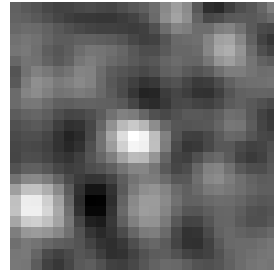
PONG
223 mJy
S/N=5.3
120.4827+2.7384



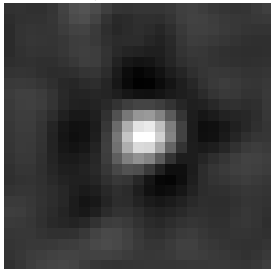
PONG
280 mJy
S/N=5.9
136.8456+1.1497



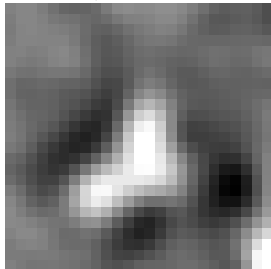
PONG
220 mJy
S/N=6.3
120.5427+2.7028



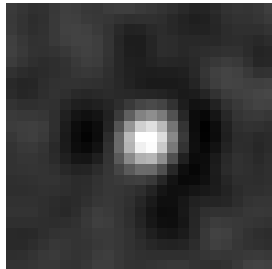
DAISY
290 mJy
S/N=27
120.4026+2.7840



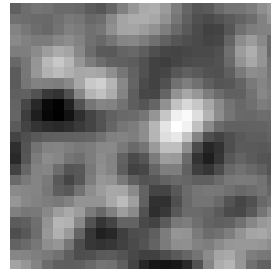
DAISY
130 mJy
S/N=11
120.6673+2.6928



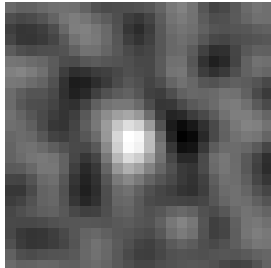
DAISY
280 mJy
S/N=26
124.0154-0.0266



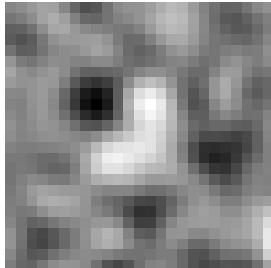
DAISY
8.5 mJy
S/N=0.77
124.1975-0.4676



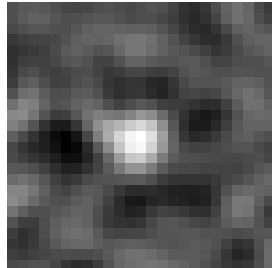
PONG
300 mJy
S/N=7.0
120.4026+2.7840



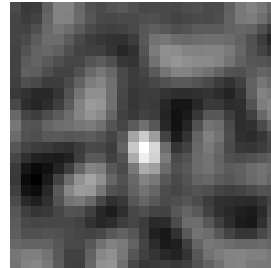
PONG
180 mJy
S/N=4.6
120.6673+2.6928



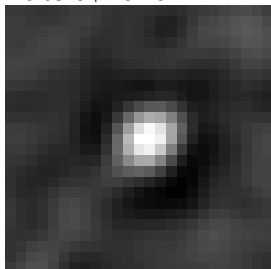
PONG
300 mJy
S/N=8.0
124.0154-0.0266



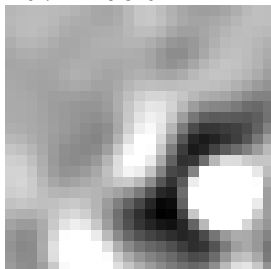
PONG
500 mJy
S/N=6.1
124.1975-0.4676



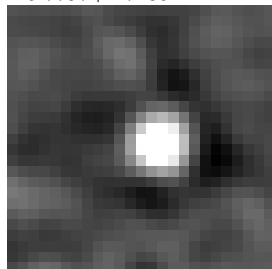
DAISY
320 mJy
S/N=29
125.6329+2.0229



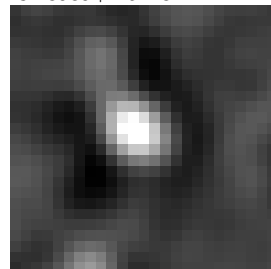
DAISY
130 mJy
S/N=12
126.7221-0.8164



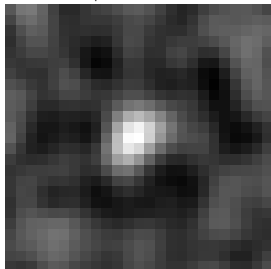
DAISY
130 mJy
S/N=12
125.7797+1.7285



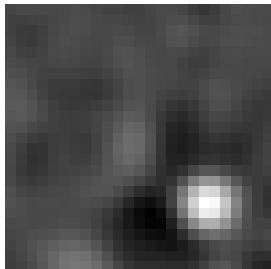
DAISY
220 mJy
S/N=21
134.8989+1.5418



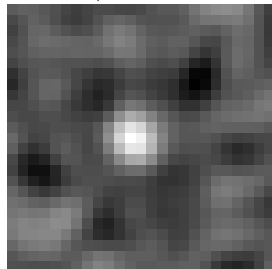
PONG
340 mJy
S/N=9.4
125.6329+2.0229



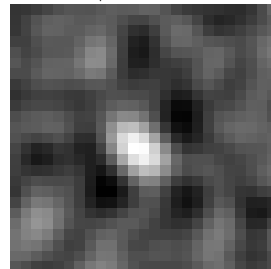
PONG
190 mJy
S/N=5.4
126.7221-0.8164



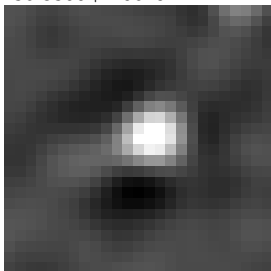
PONG
270 mJy
S/N=7.2
125.7797+1.7285



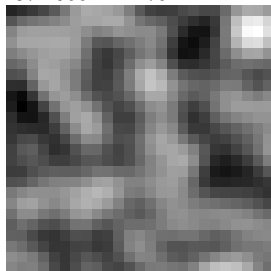
PONG
290 mJy
S/N=6.6
134.8989+1.5418



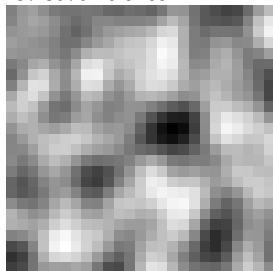
DAISY
420 mJy
S/N=40
136.8300+1.0619



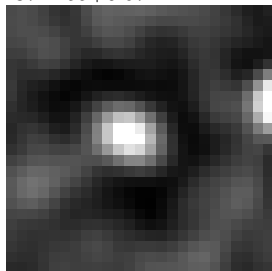
DAISY
0.23 mJy
S/N=0.02
137.2066-1.1475



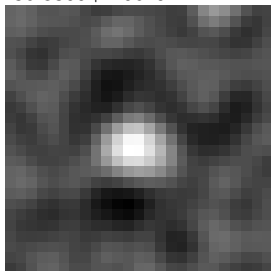
DAISY
-16.0 mJy
S/N=-1.6
137.3576-0.9109



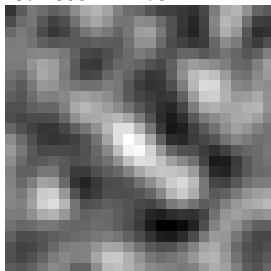
DAISY
160 mJy
S/N=16
137.4255+0.6721



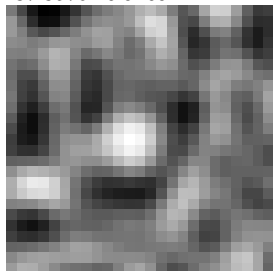
PONG
460 mJy
S/N=9.2
136.8300+1.0619



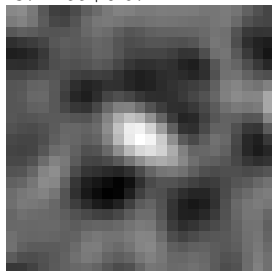
PONG
130 mJy
S/N=3.7
137.2066-1.1475



PONG
160 mJy
S/N=3.6
137.3576-0.9109



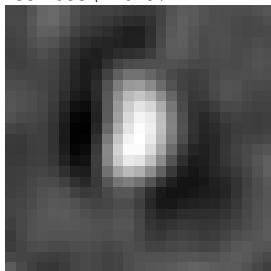
PONG
220 mJy
S/N=5.1
137.4255+0.6721



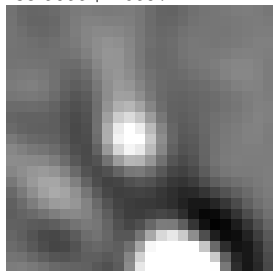
DAISY
220 mJy
S/N=21
138.3077+1.5508



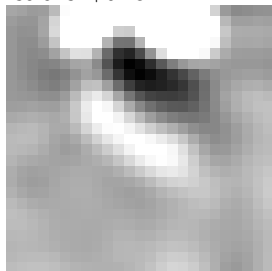
DAISY
220 mJy
S/N=21
138.4633+1.6297



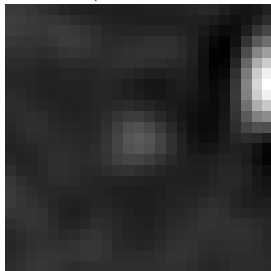
DAISY
260 mJy
S/N=25
138.5055+1.6597



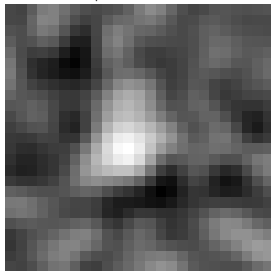
DAISY
130 mJy
S/N=14
139.9132+0.1844



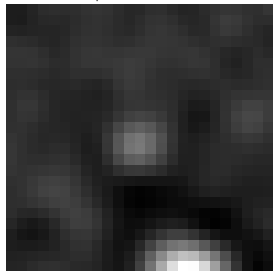
PONG
270 mJy
S/N=6.7
138.3077+1.5508



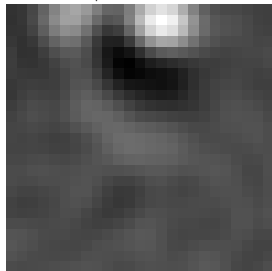
PONG
210 mJy
S/N=5.5
138.4633+1.6297



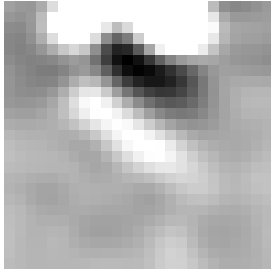
PONG
290 mJy
S/N=8.1
138.5055+1.6597



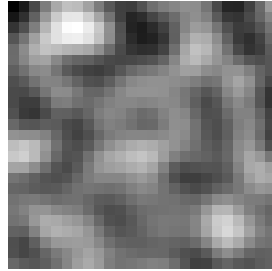
PONG
160 mJy
S/N=4.0
139.9132+0.1844



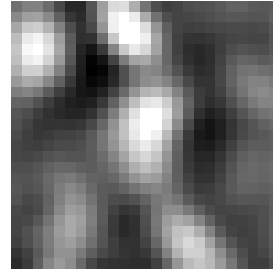
DAISY
130 mJy
S/N=14
139.9132+0.1844



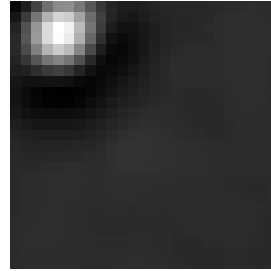
DAISY
15.0 mJy
S/N=0.42
133.7987+1.1974



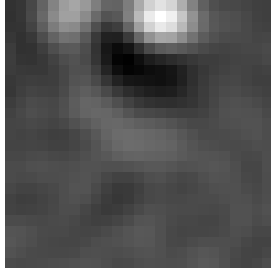
DAISY
370 mJy
S/N=11
134.1999+0.7498



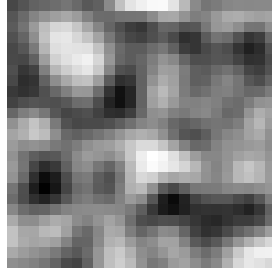
DAISY
56.0 mJy
S/N=5.7
121.2878+0.6455



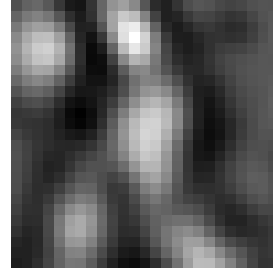
PONG
160 mJy
S/N=4.0
139.9132+0.1844



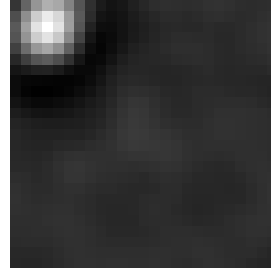
PONG
120 mJy
S/N=2.8
133.7987+1.1974



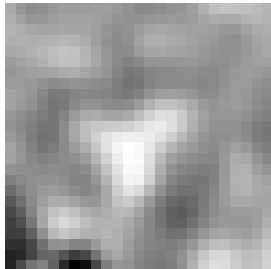
PONG
410 mJy
S/N=11
134.1999+0.7498



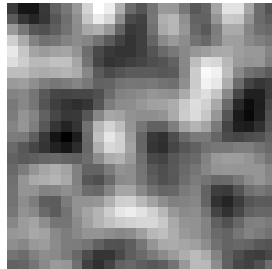
PONG
190 mJy
S/N=4.4
121.2878+0.6455



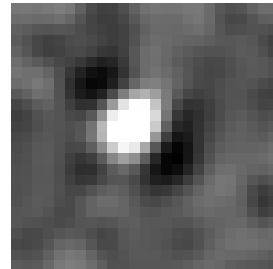
DAISY
59.0 mJy
S/N=5.8
121.3675+1.2596



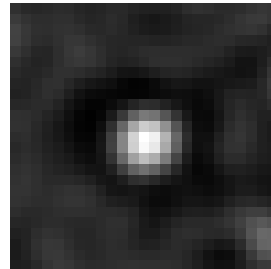
DAISY
-4.1 mJy
S/N=-0.52
122.2945-0.6332



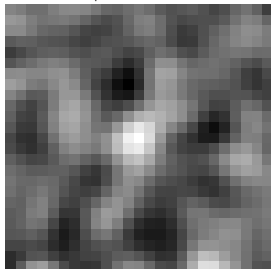
DAISY
100 mJy
S/N=12
123.0354-0.6744



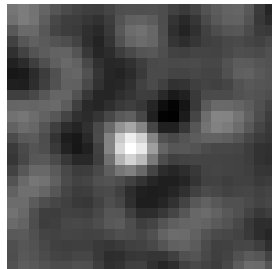
DAISY
180 mJy
S/N=22
123.9367-0.9731



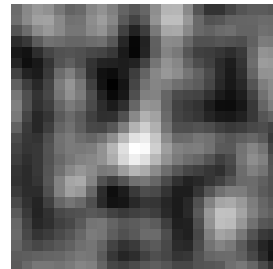
PONG
180 mJy
S/N=4.5
121.3675+1.2596



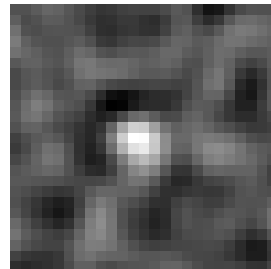
PONG
340 mJy
S/N=6.2
122.2945-0.6332



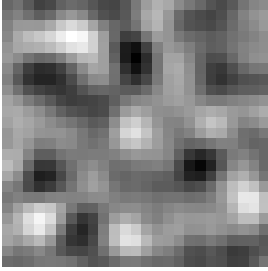
PONG
180 mJy
S/N=4.4
123.0354-0.6744



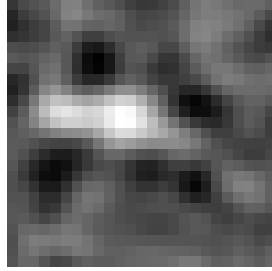
PONG
250 mJy
S/N=6.6
123.9367-0.9731



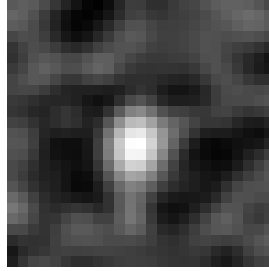
DAISY
100 mJy
S/N=2.6
133.7987+1.1974



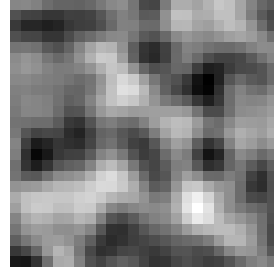
DAISY
46.0 mJy
S/N=4.5
124.5559+2.5240



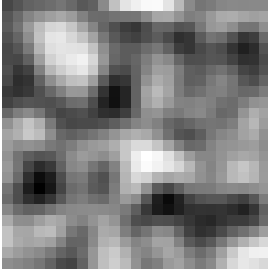
DAISY
86.0 mJy
S/N=8.2
125.7519+1.7130



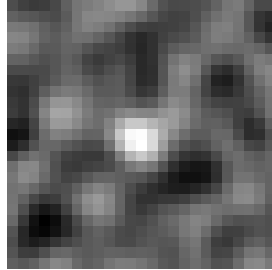
DAISY
-7.2 mJy
S/N=-0.70
125.3049-1.9427



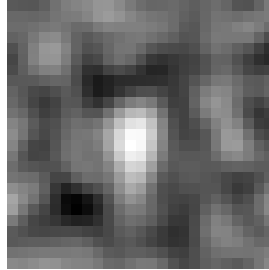
PONG
123 mJy
S/N=2.8
133.7987+1.1974



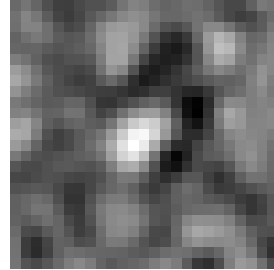
PONG
220 mJy
S/N=5.3
124.5559+2.5240



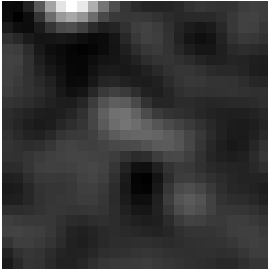
PONG
200 mJy
S/N=5.3
125.7519+1.7130



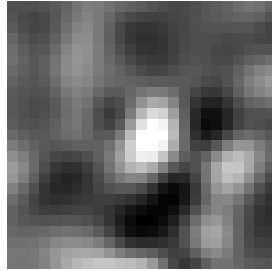
PONG
240 mJy
S/N=4.5
125.3049-1.9427



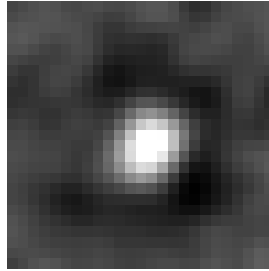
DAISY
65.0 mJy
S/N=5.2
126.6821-0.8598



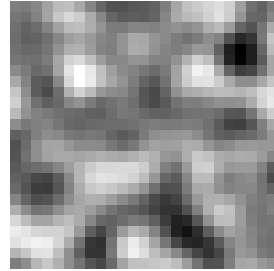
DAISY
160 mJy
S/N=21
126.6956-0.7277



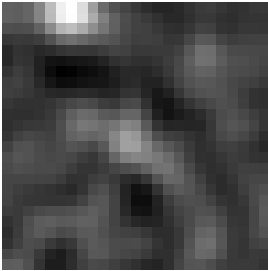
DAISY
130 mJy
S/N=17
127.9145+0.6587



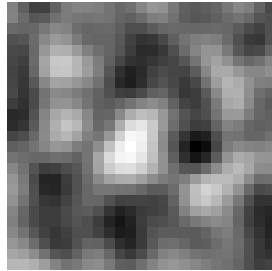
DAISY
-3.0 mJy
S/N=-0.32
130.7522-0.6644



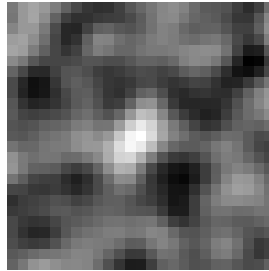
PONG
160 mJy
S/N=4.7
126.6821-0.8598



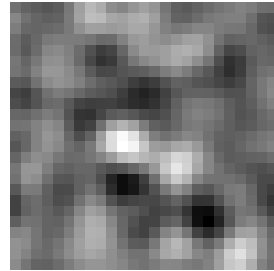
PONG
230 mJy
S/N=5.6
126.6956-0.7277



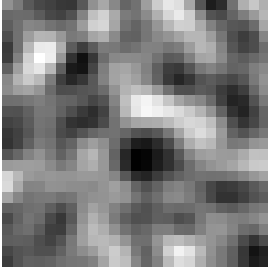
PONG
190 mJy
S/N=4.5
127.9145+0.6587



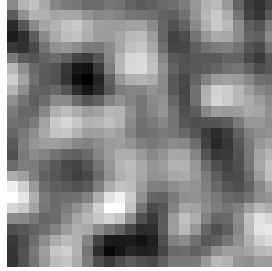
PONG
140 mJy
S/N=4.1
130.7522-0.6644



DAISY
-7.2 mJy
S/N=-0.74
132.5422+0.6843



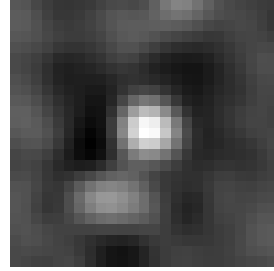
DAISY
-3.4 mJy
S/N=-0.39
133.3980-1.3372



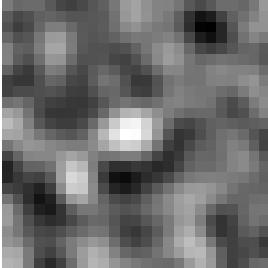
DAISY
95.0 mJy
S/N=11
133.6822+1.2020



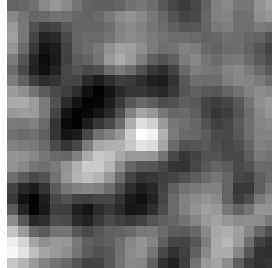
DAISY
210 mJy
S/N=25
136.1197+2.0830



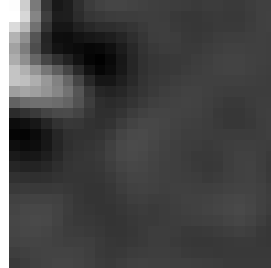
PONG
210 mJy
S/N=4.0
132.5422+0.6843



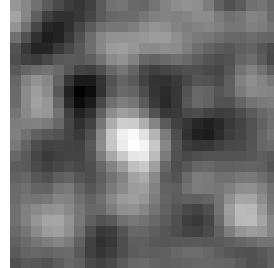
PONG
160 mJy
S/N=4.2
133.3980-1.3372



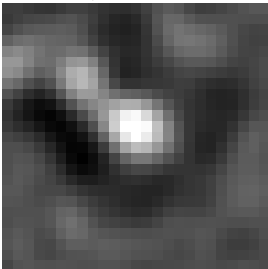
PONG
290 mJy
S/N=4.7
133.6822+1.2020



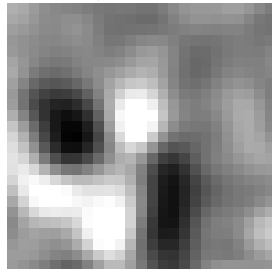
PONG
280 mJy
S/N=5.0
136.1197+2.0830



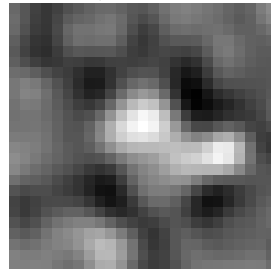
DAISY
130 mJy
S/N=16
134.2598+1.1419



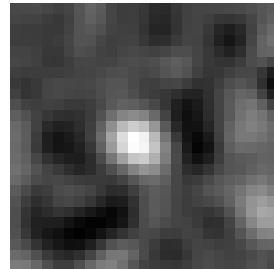
DAISY
92.0 mJy
S/N=12
133.7309+1.2784



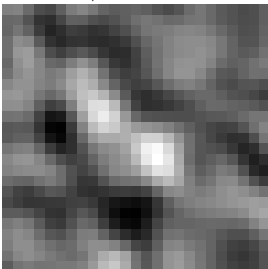
DAISY
86.0 mJy
S/N=7.5
133.8622+1.0609



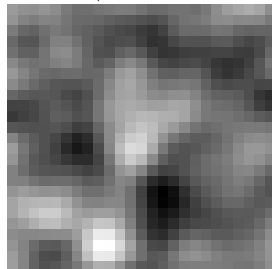
DAISY
90.0 mJy
S/N=9.5
134.0833+0.7120



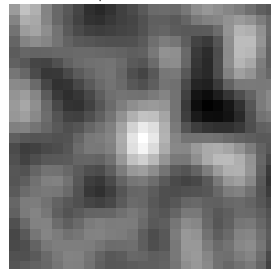
PONG
180 mJy
S/N=4.6
134.2598+1.1419



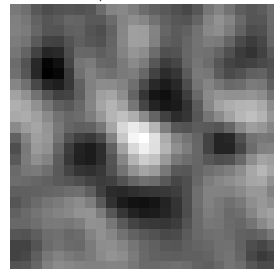
PONG
190 mJy
S/N=4.1
133.7309+1.2784



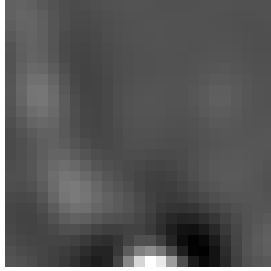
PONG
210 mJy
S/N=6.3
133.8622+1.0609



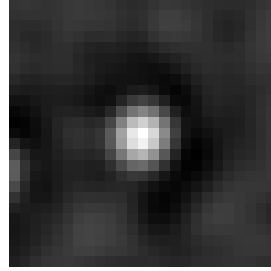
PONG
220 mJy
S/N=5.7
134.0833+0.7120



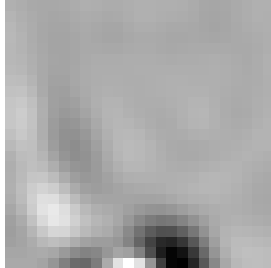
DAISY
-6.3 mJy
S/N=-0.76
133.9489+1.0798



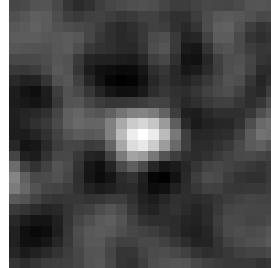
DAISY
250 mJy
S/N=32
137.4088+0.6755



PONG
250 mJy
S/N=4.6
133.9489+1.0798



PONG
300 mJy
S/N=7.1
137.4088+0.6755



DAISY (top row) and PONG (bottom row) source comparison.