

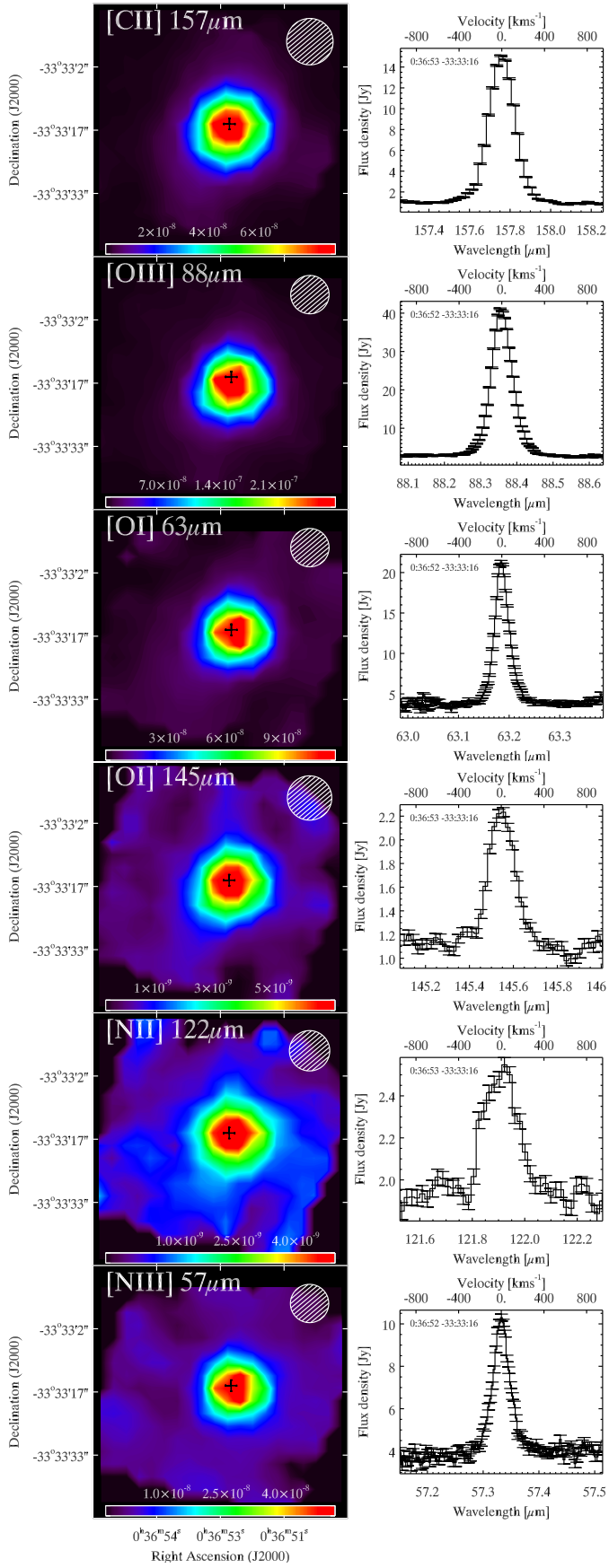
Atlas of the PACS spectroscopy observations from the *Herschel* Dwarf Galaxy Survey

This file is the full version of Appendix B of this paper. It contains all the PACS spectroscopic maps of the *Herschel* Dwarf Galaxy Survey. For each galaxy, we present the flux map of each observed line on the *left* hand side, and the rebinned spectrum of the brightest spatial pixel on the *right* hand side. The position of this spectrum is indicated by a dark cross on the map. White circles represent the PACS beam sizes.

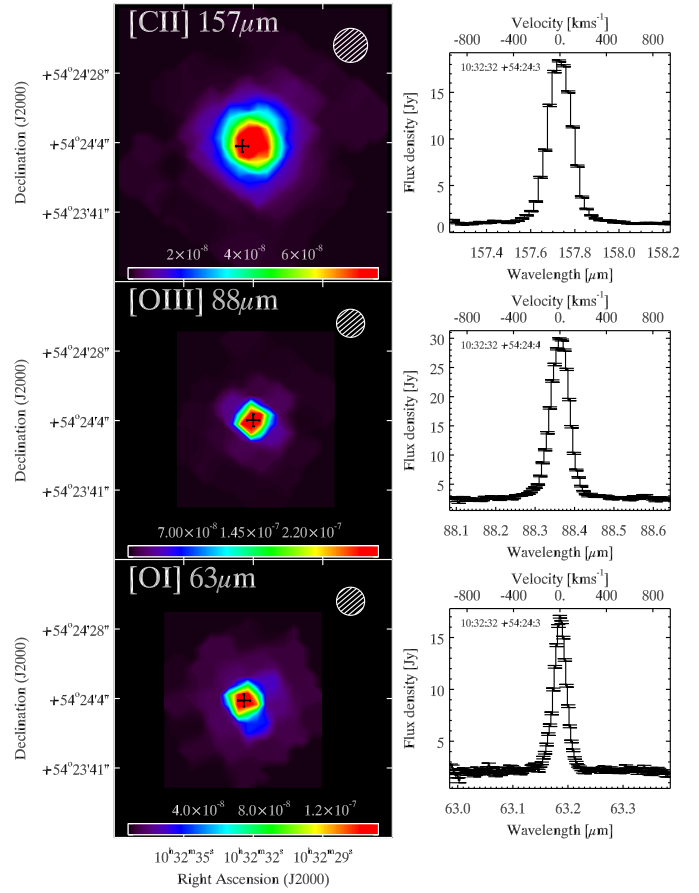
List of sources

Haro 11	p. 2	NGC 625	p. 13
Haro 2	p. 2	Pox 186	p. 13
Haro 3	p. 3	SBS 0335-052	p. 14
He 2-10	p. 3	SBS 1159+545	p. 14
HS 0017+1055	p. 4	SBS 1211+540	p. 14
HS 0052+2536	p. 4	SBS 1249+493	p. 14
HS 0822+3542	p. 4	SBS 1415+437	p. 15
HS 1222+3741	p. 4	SBS 1533+574	p. 15
HS 1236+3937	p. 4	Tol 1214-277	p. 16
HS 1304+3529	p. 5	UGC 4483	p. 16
HS 1319+3224	p. 5	UM 133	p. 17
HS 1330+3651	p. 5	UM 311	p. 17
HS 1442+4250	p. 5	UM 448	p. 18
HS 2352+2733	p. 6	UM 461	p. 18
II Zw 40	p. 6	VII Zw 403	p. 19
I Zw 18	p. 7	IC 10	p. 19
Mrk 1089	p. 7	LMC-30Dor	p. 20
Mrk 1450	p. 8	LMC-N11A	p. 20
Mrk 153	p. 8	LMC-N11B	p. 21
Mrk 209	p. 9	LMC-N11C	p. 21
Mrk 930	p. 9	LMC-N11I	p. 22
NGC 1140	p. 10	LMC-N158	p. 22
NGC 1569	p. 10	LMC-N159	p. 23
NGC 1705	p. 11	LMC-N160	p. 23
NGC 2366	p. 11	SMC-N66	p. 24
NGC 4214	p. 12	NGC 4449	p. 24
NGC 4861	p. 12	NGC 6822	p. 25
NGC 5253	p. 13		

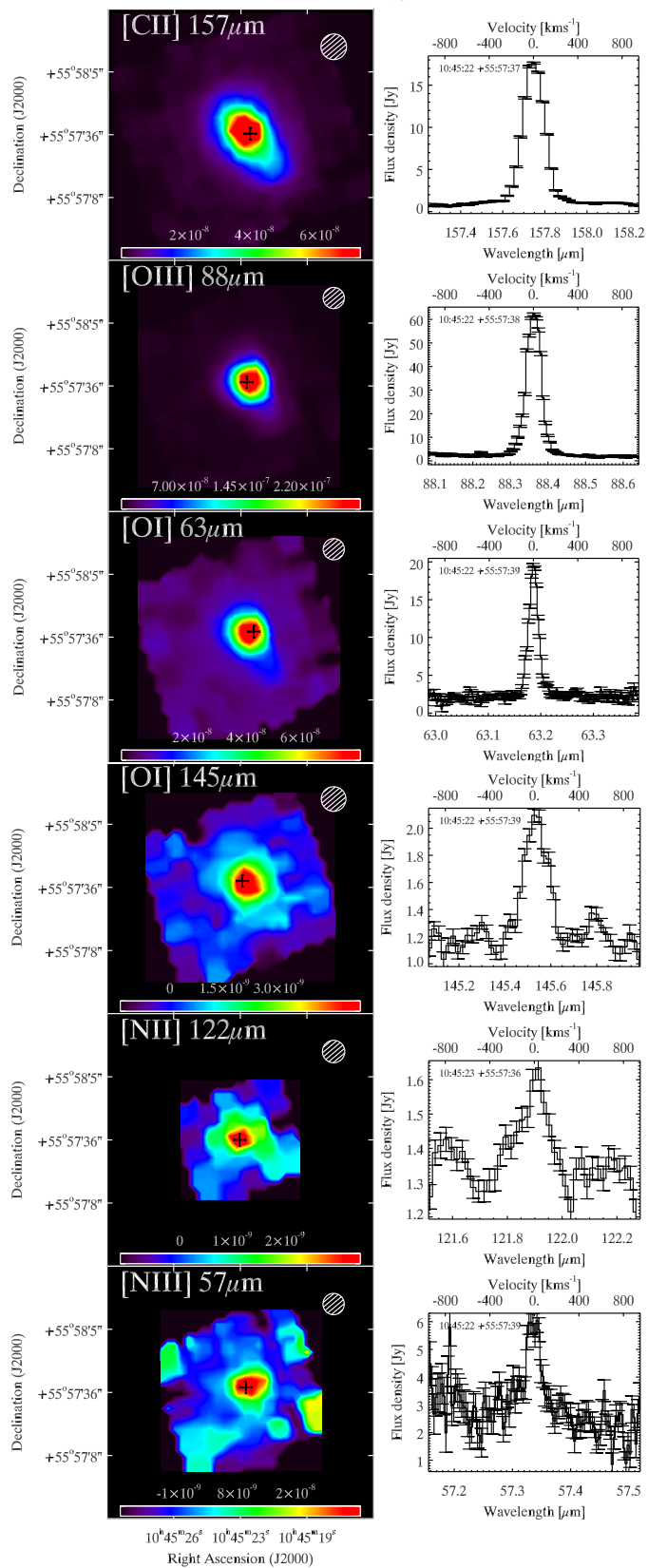
Haro11



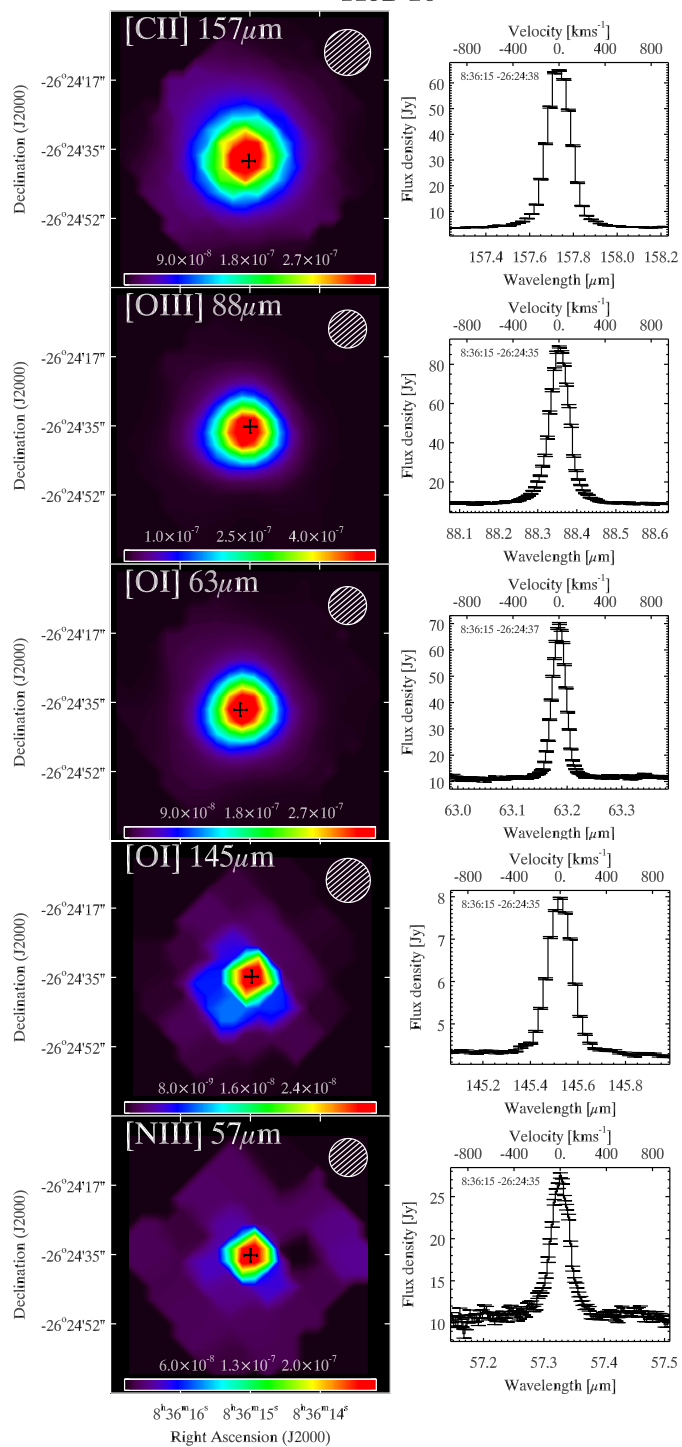
Haro2



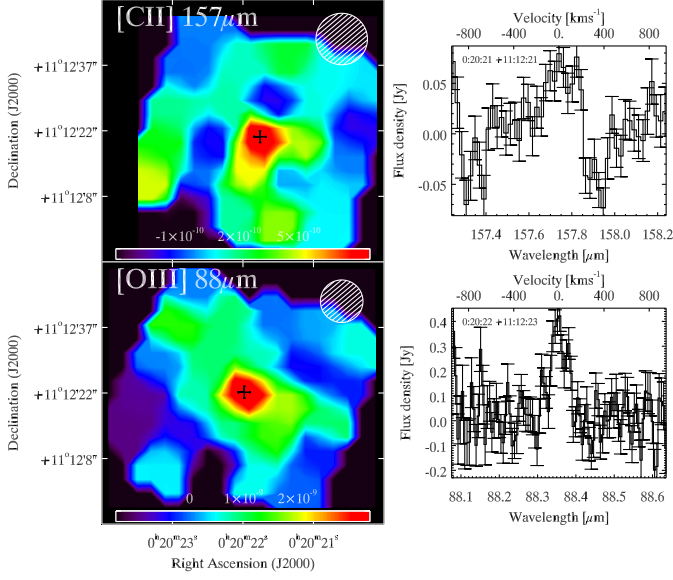
Haro3



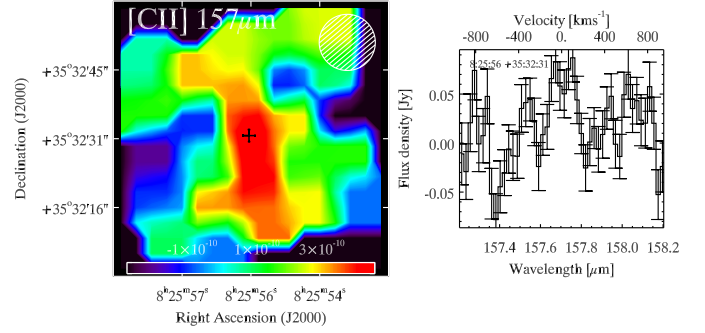
He2-10



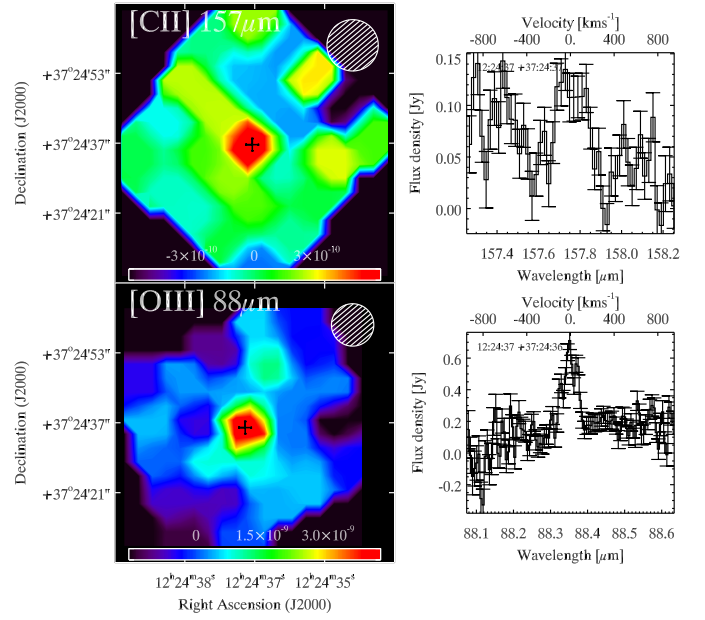
HS0017+1055



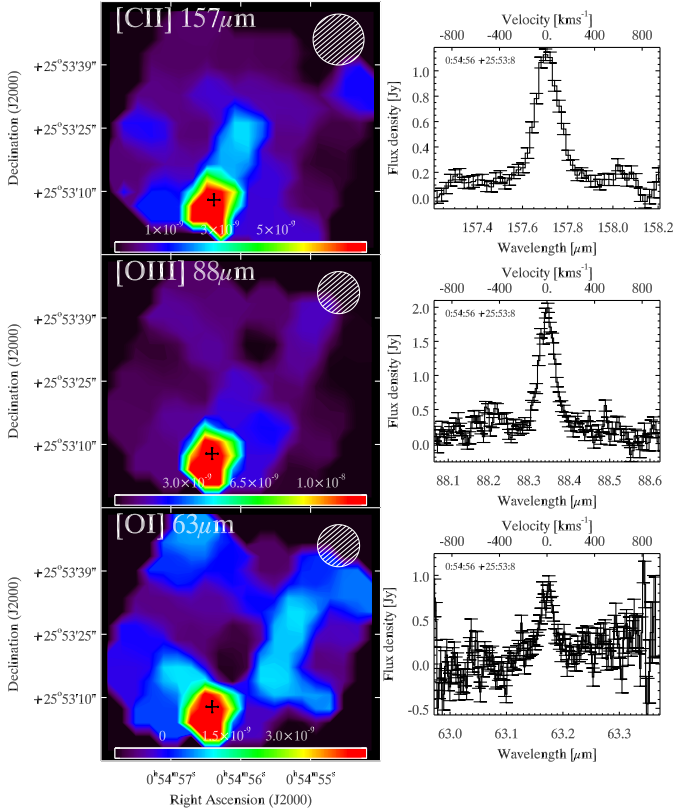
HS0822+3542



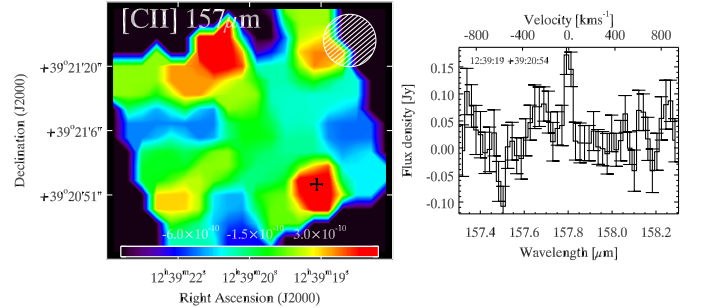
HS1222+3741



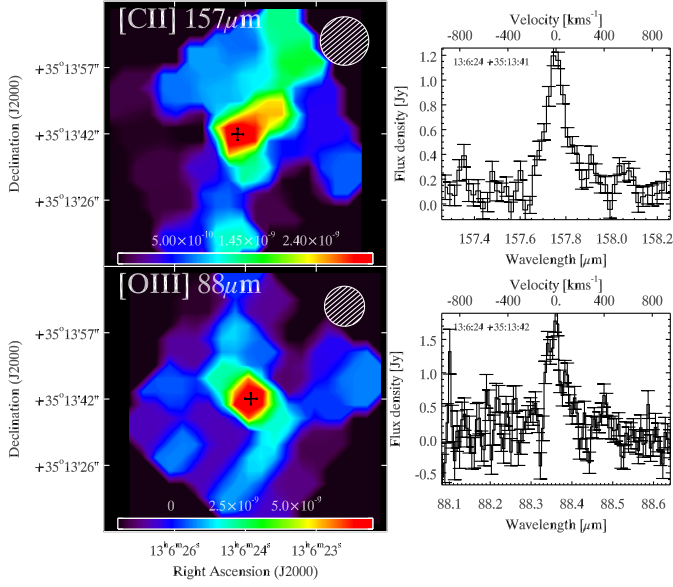
HS0052+2536



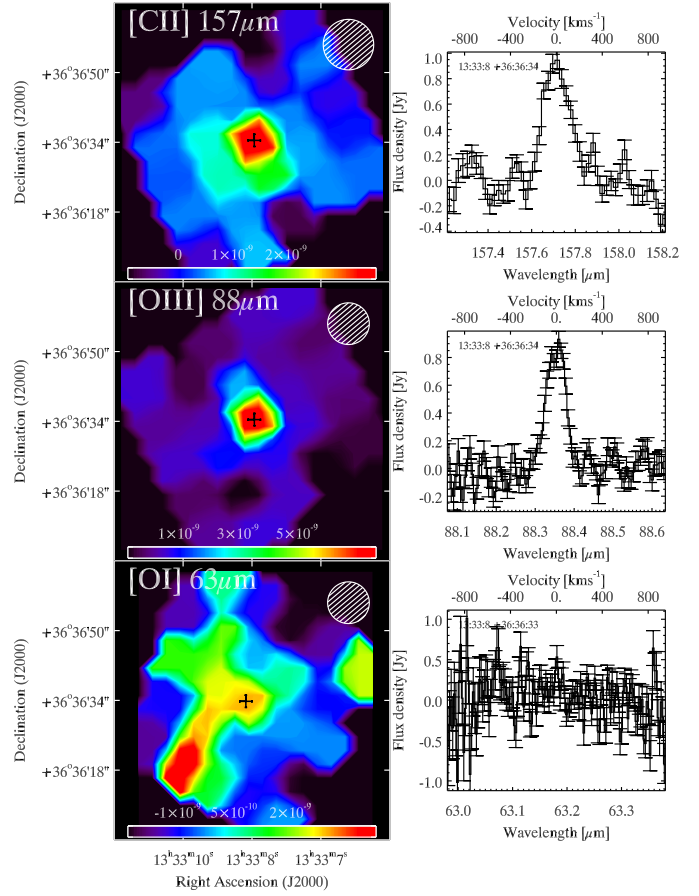
HS1236+3937



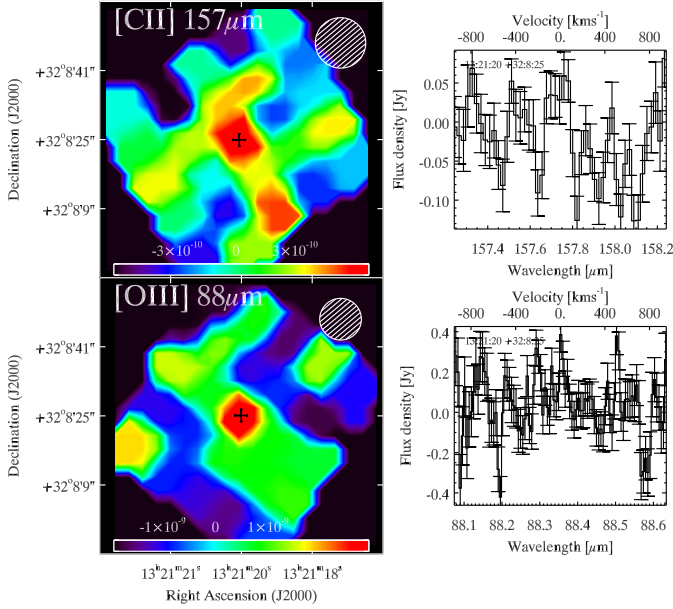
HS1304+3529



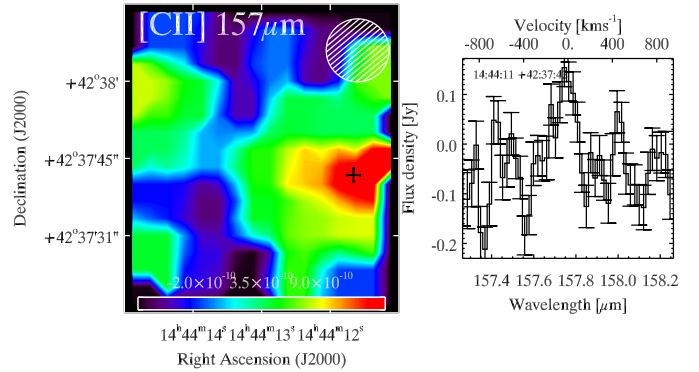
HS1330+3651



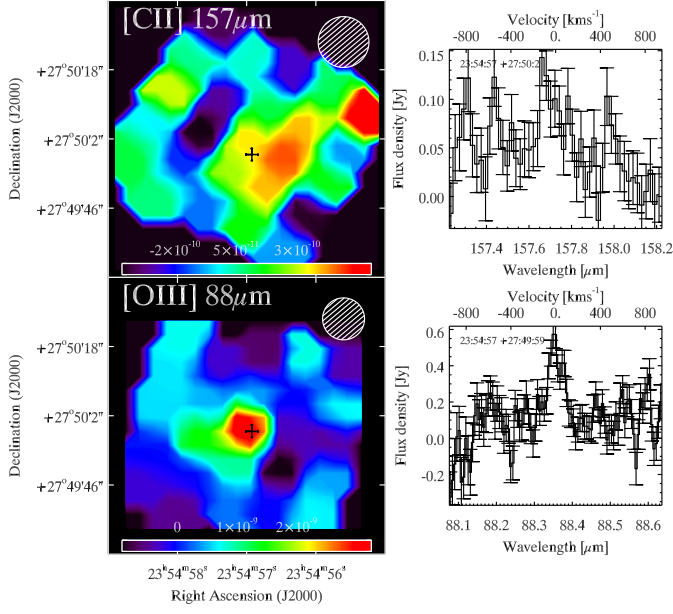
HS1319+3224



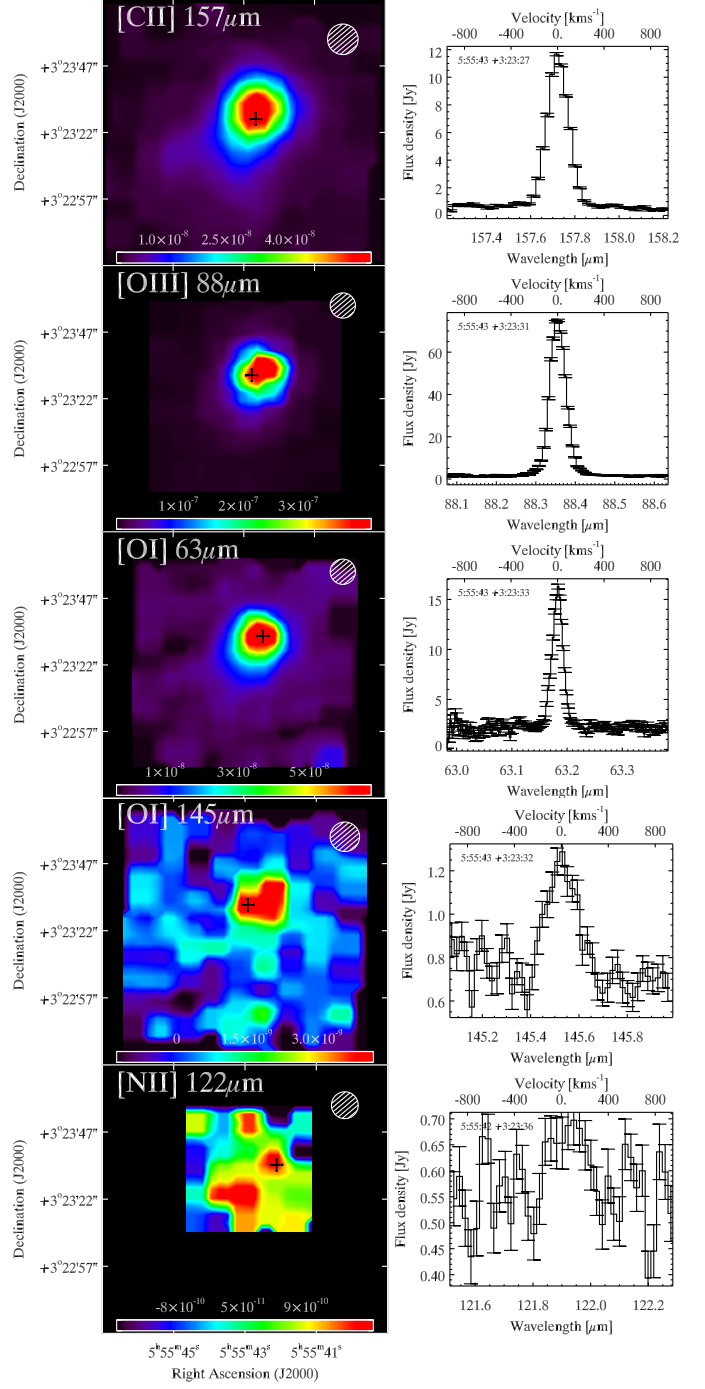
HS1442+4250



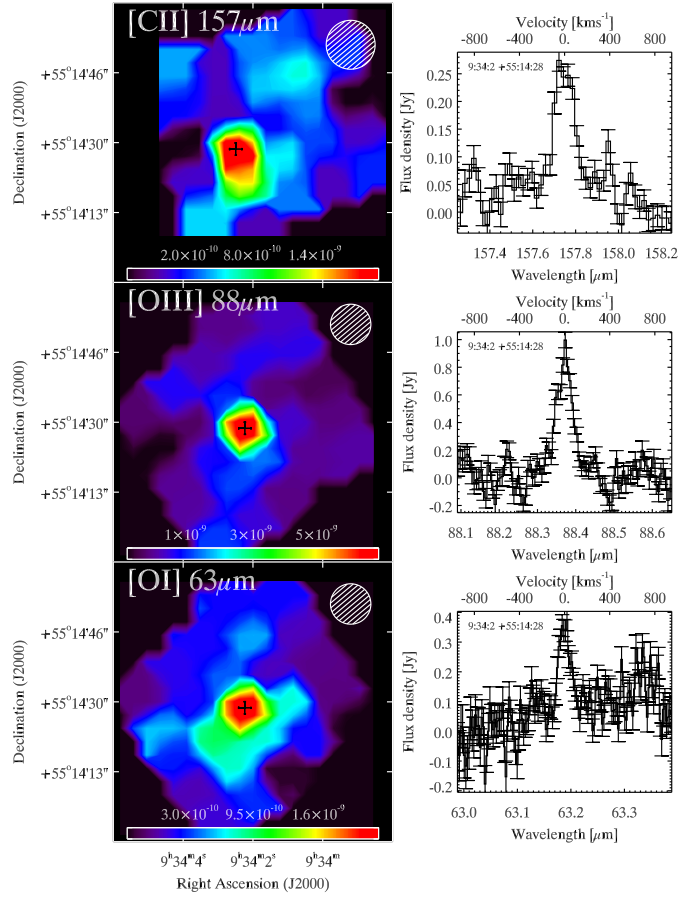
HS2352+2733



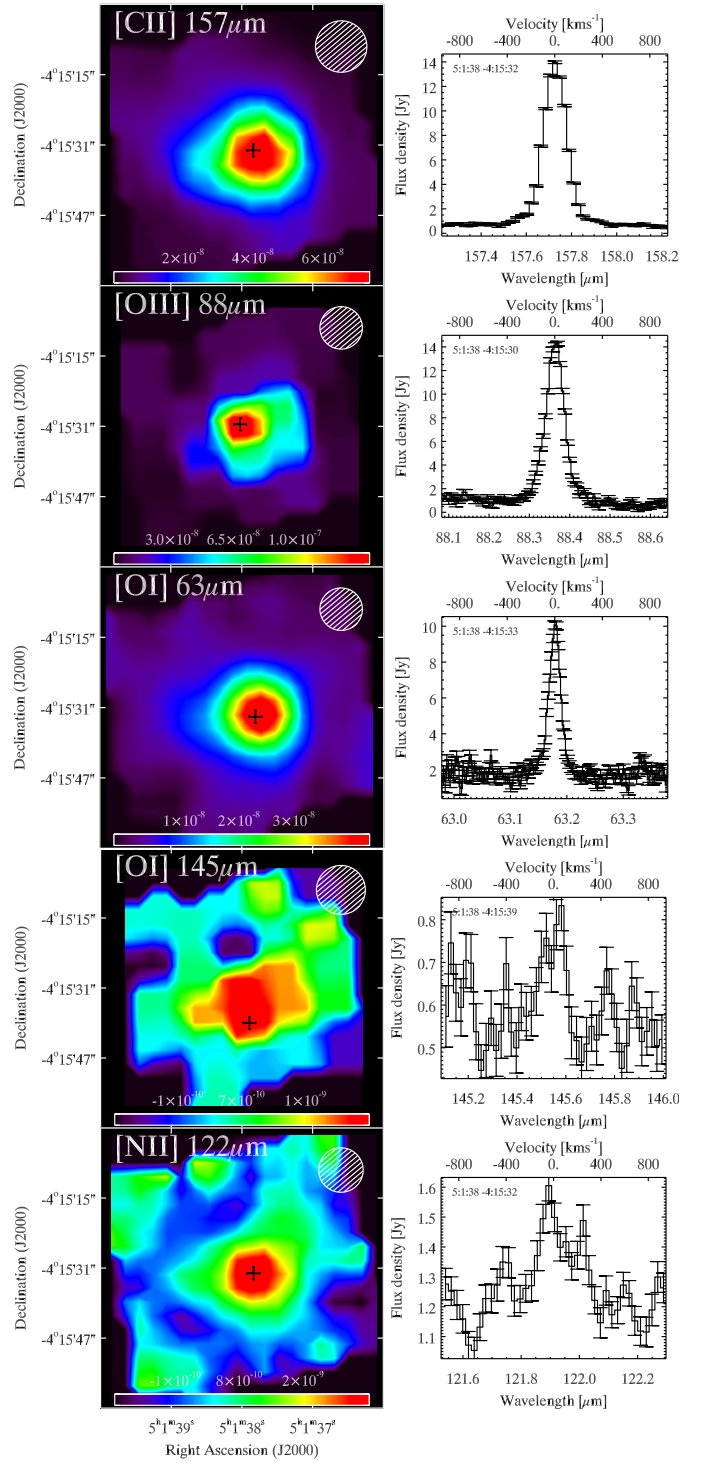
IIZw40



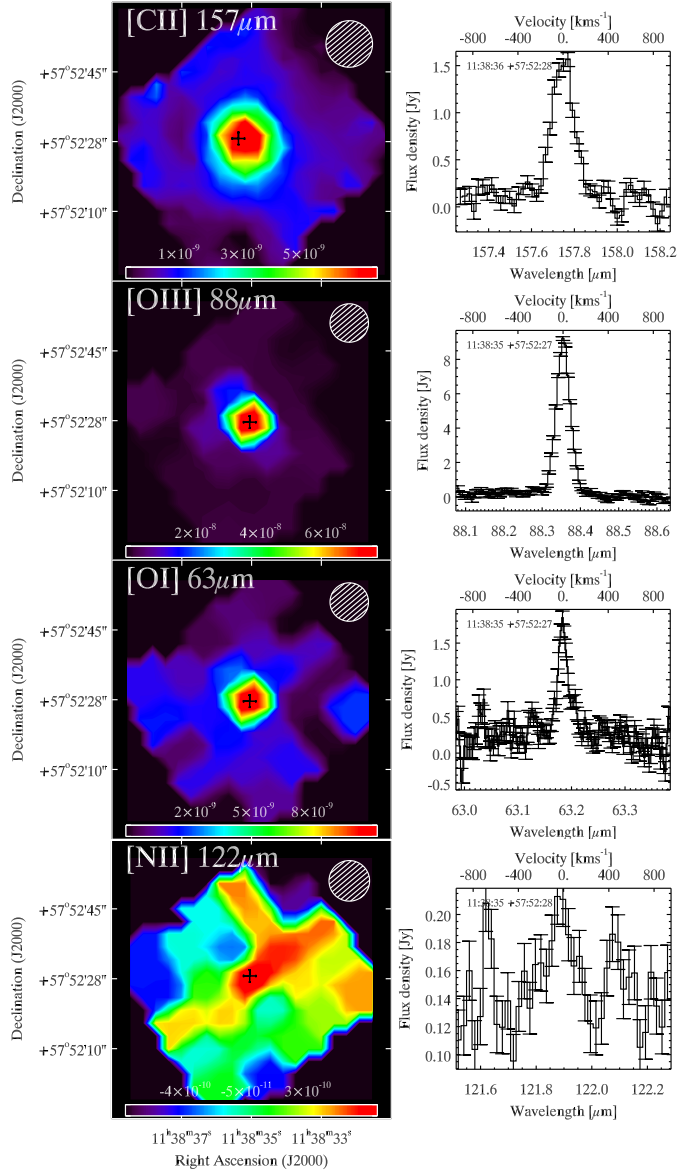
IZw18



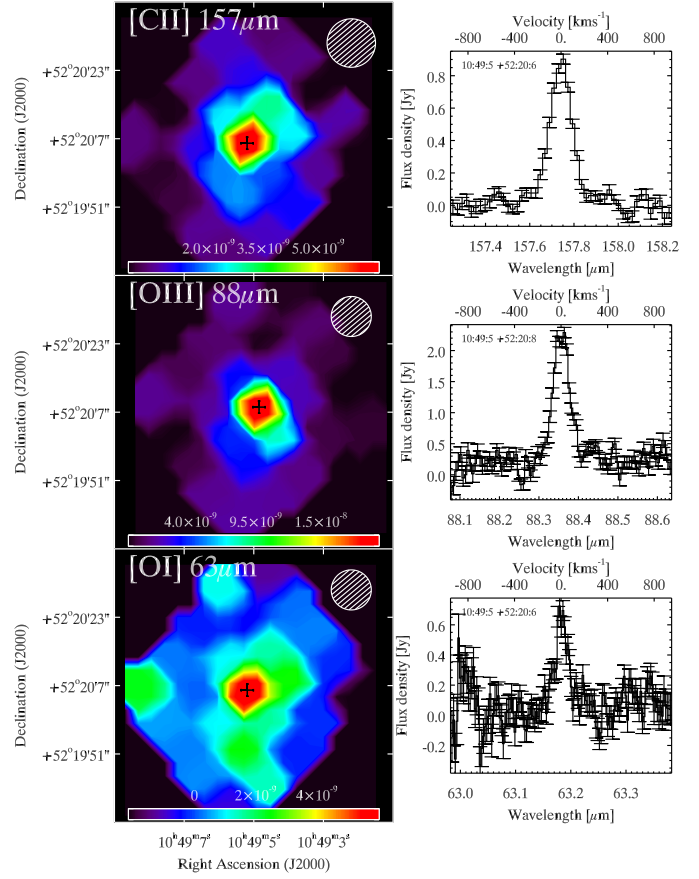
Mrk1089



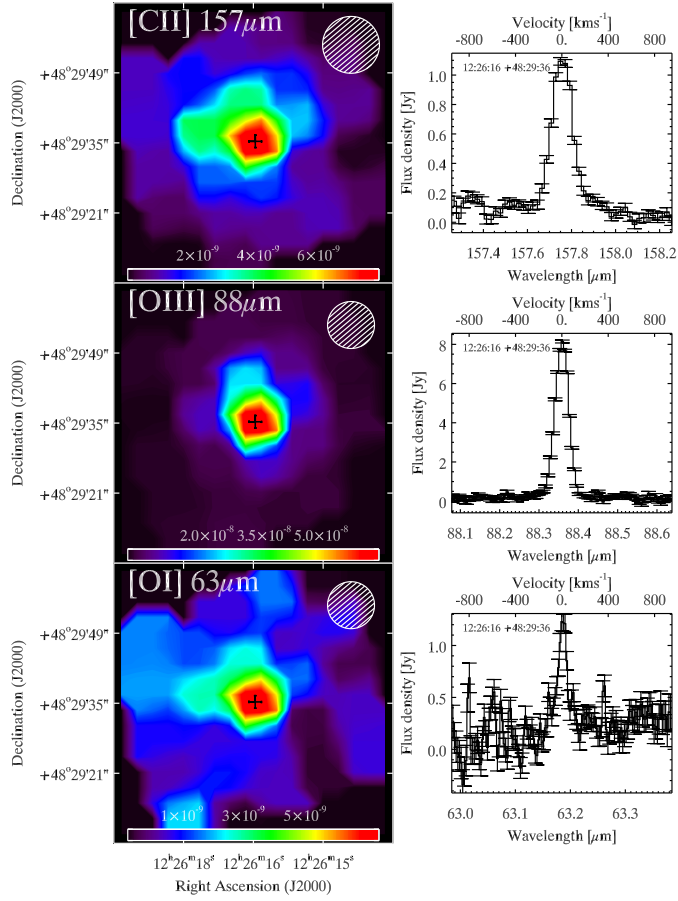
Mrk1450



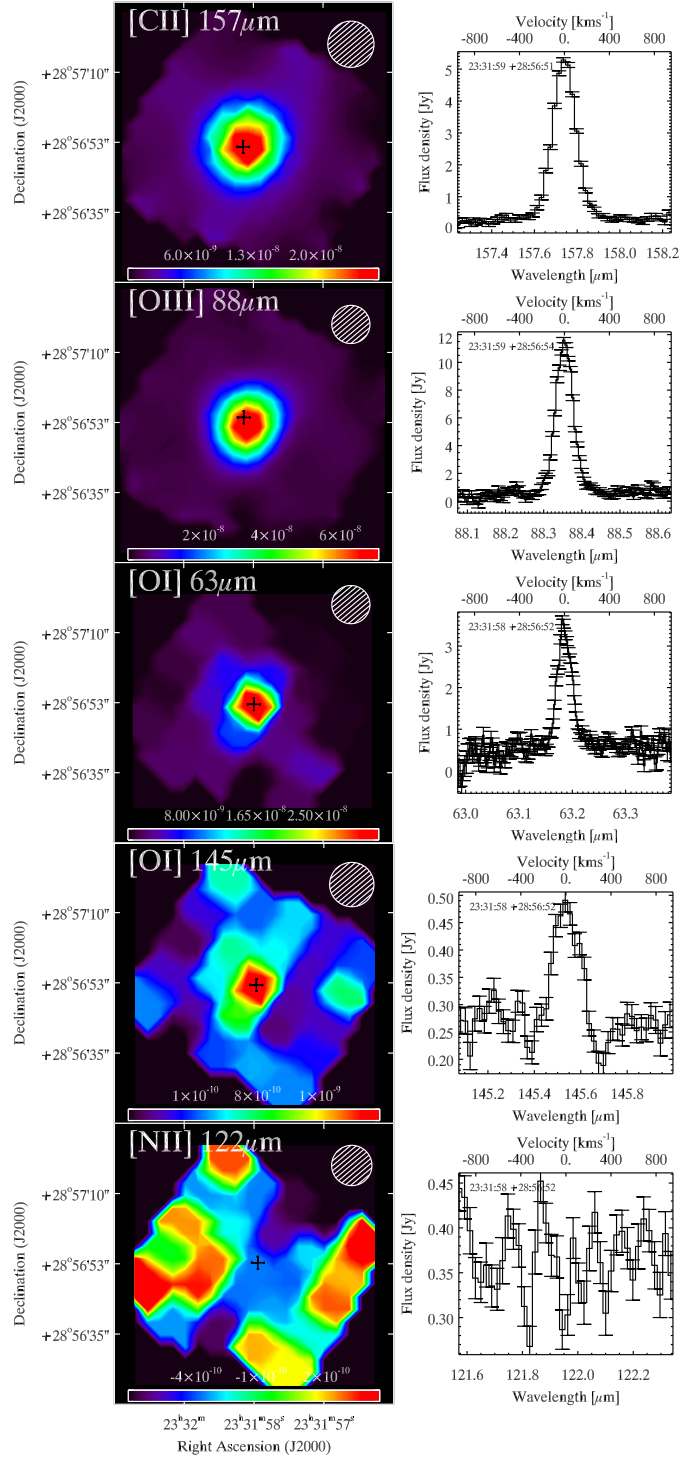
Mrk153



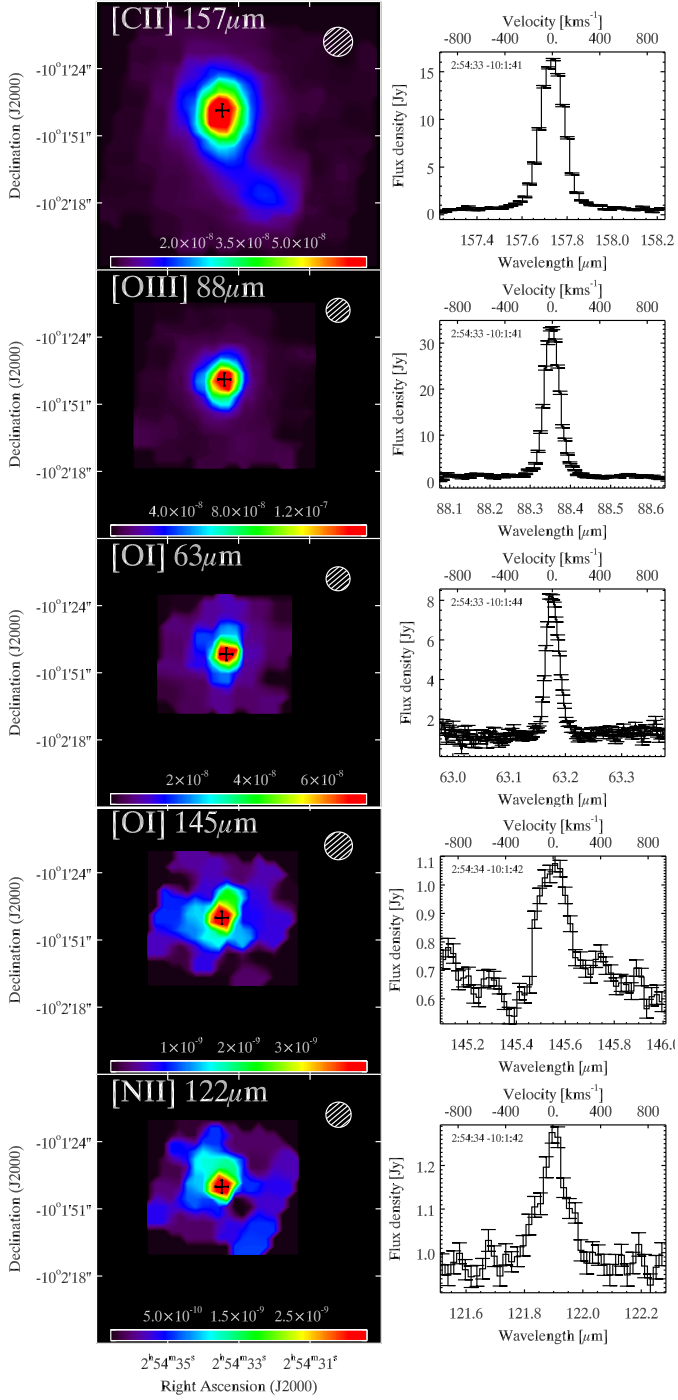
Mrk209



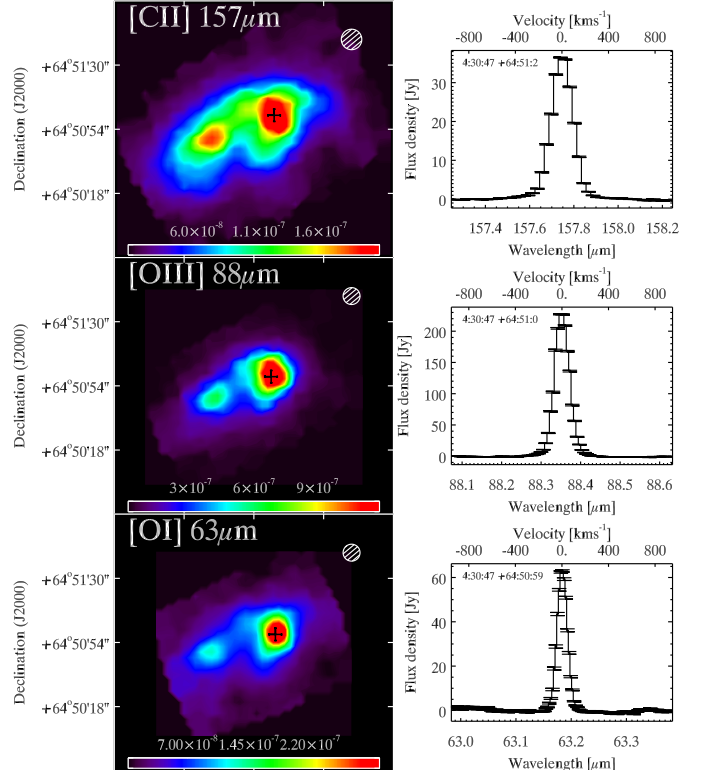
Mrk930



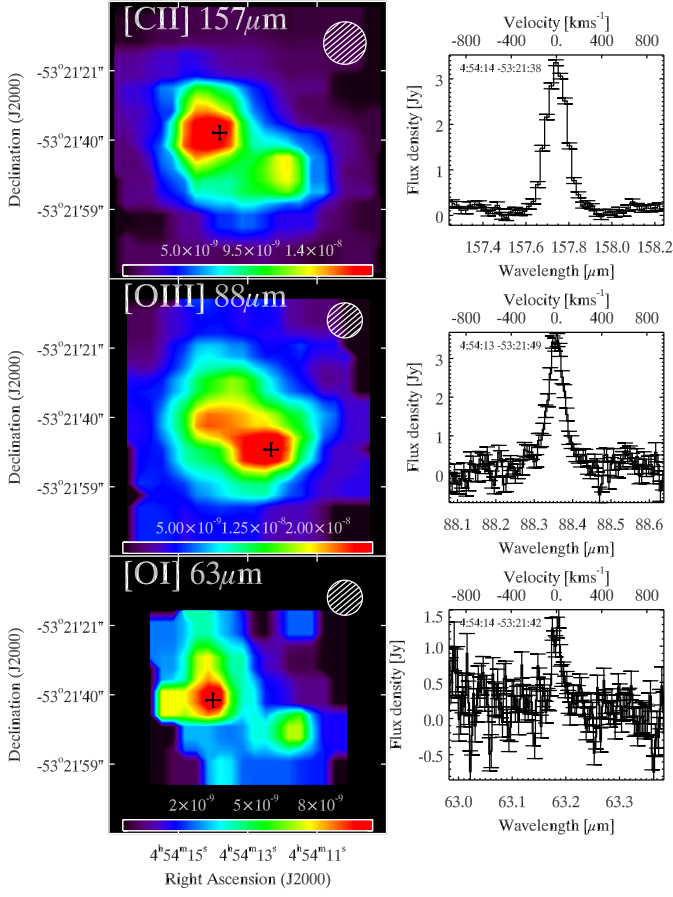
NGC1140



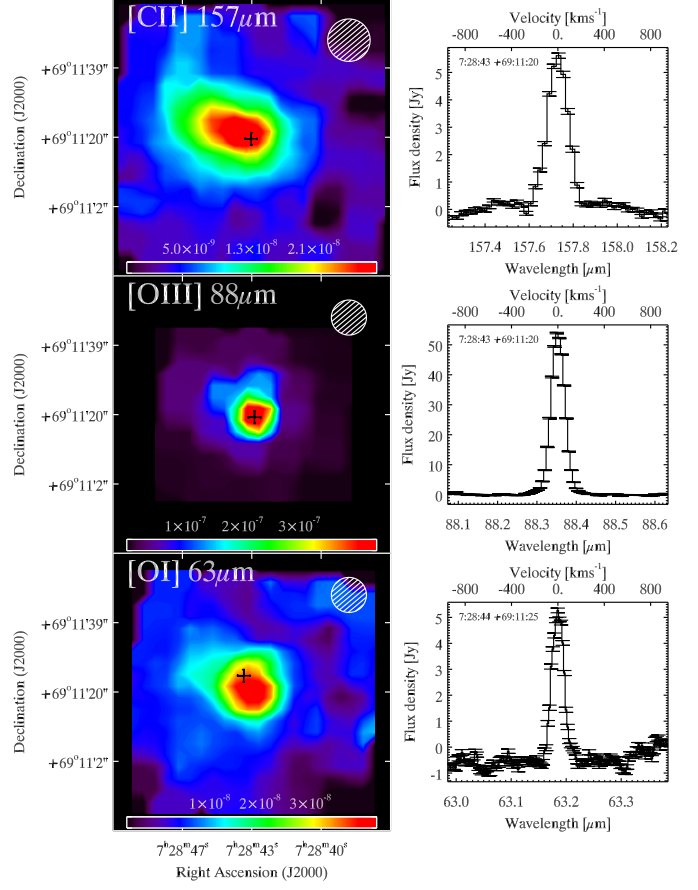
NGC1569



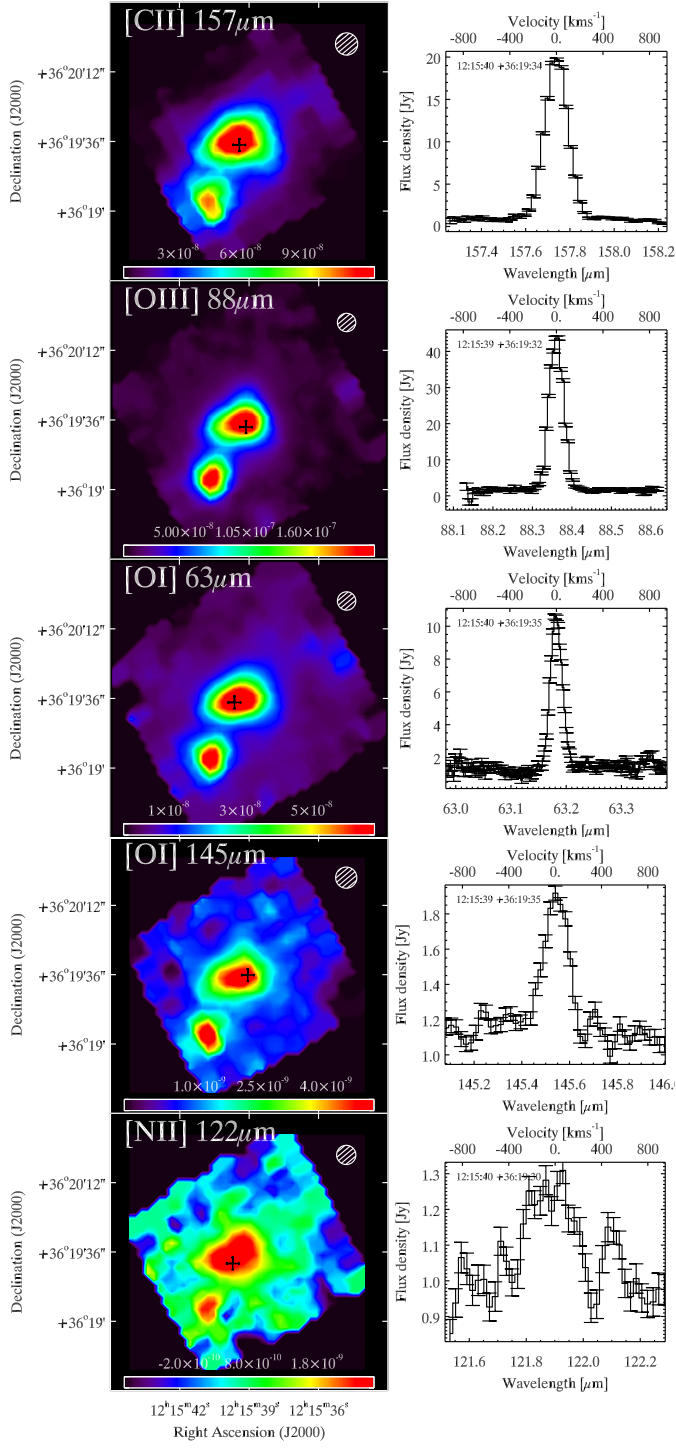
NGC1705



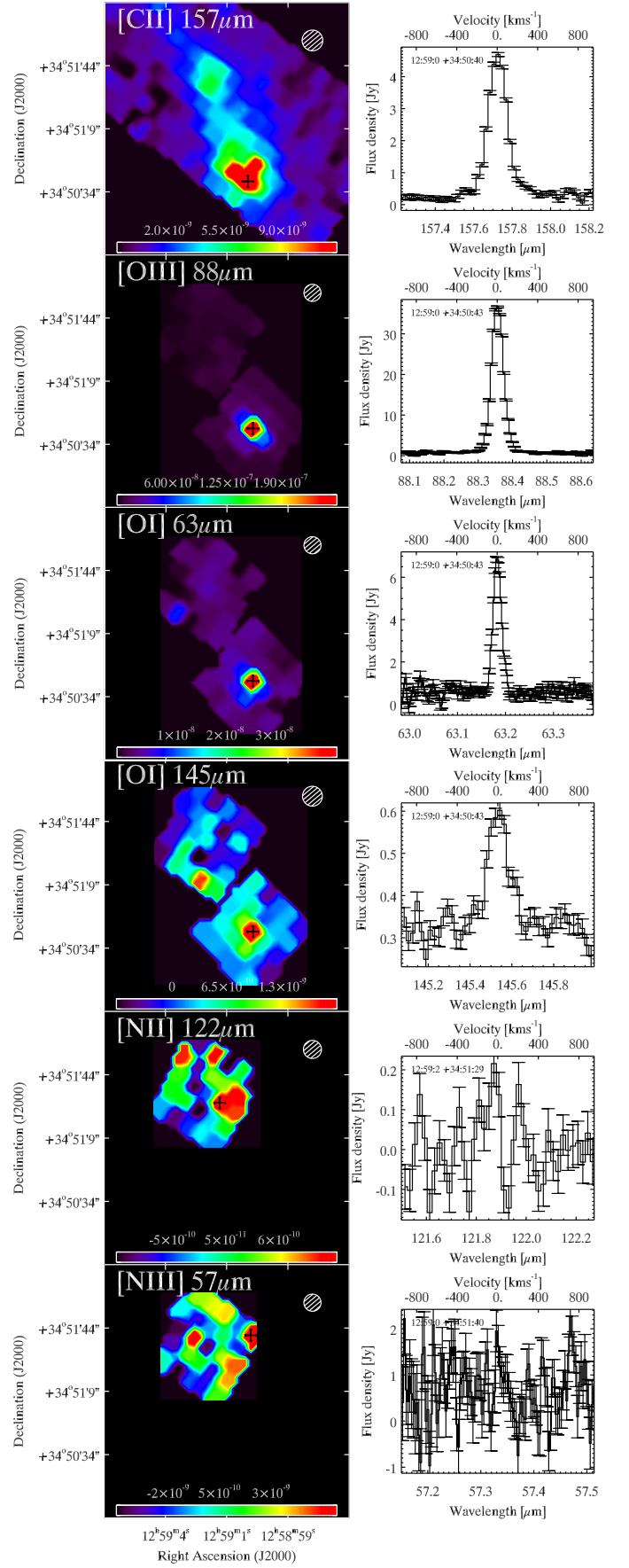
NGC2366



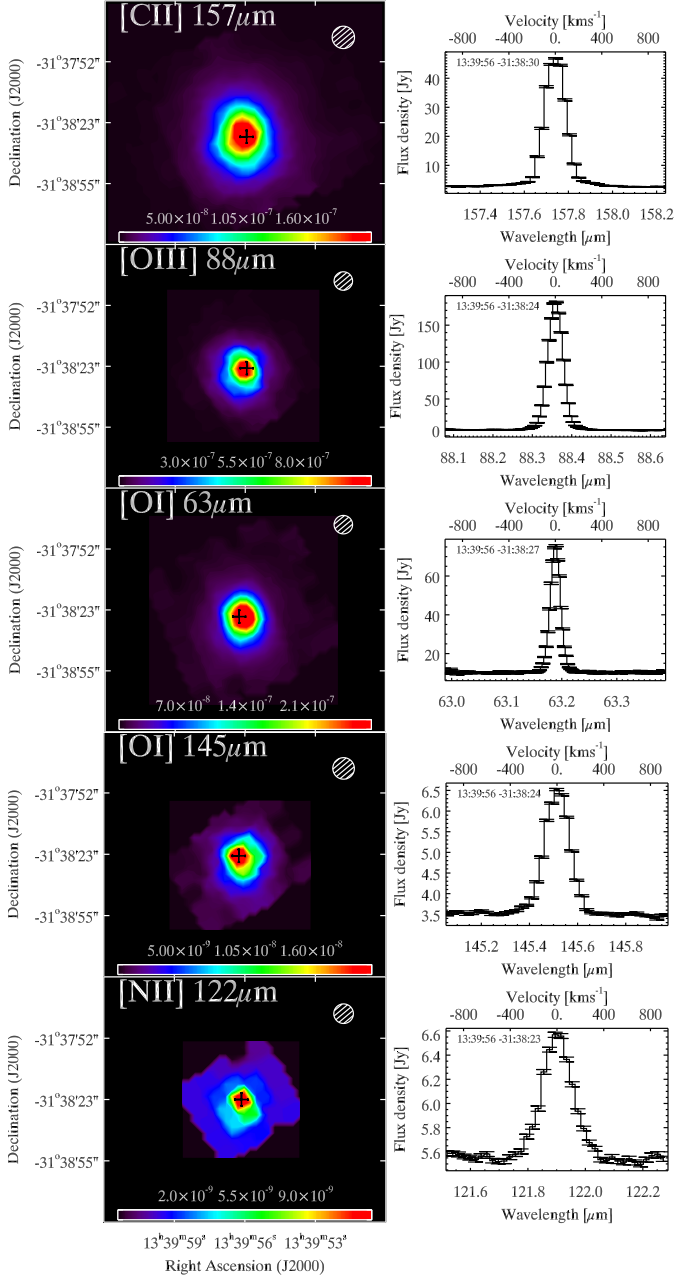
NGC4214



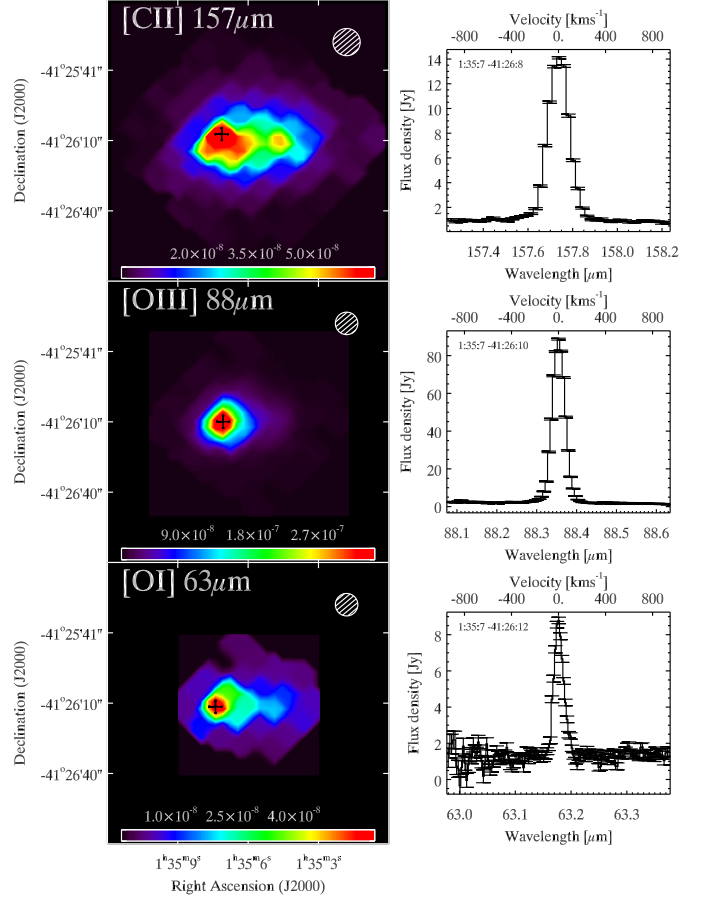
NGC4861



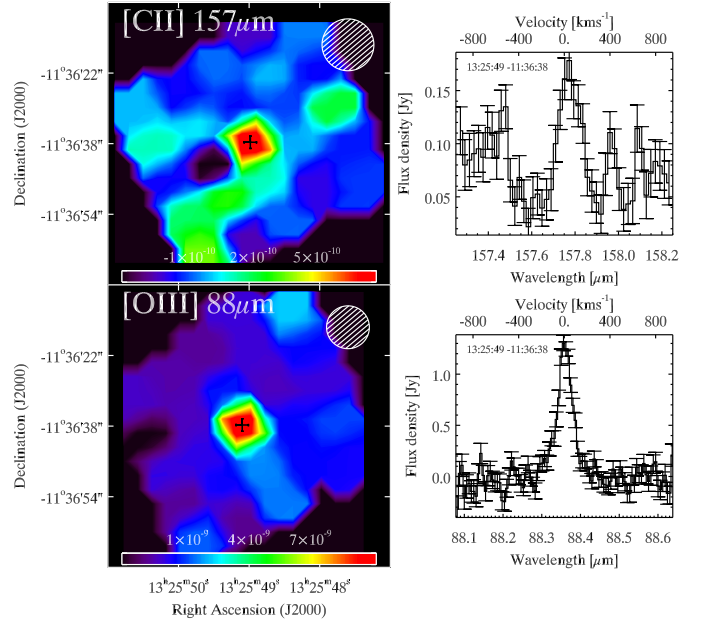
NGC5253



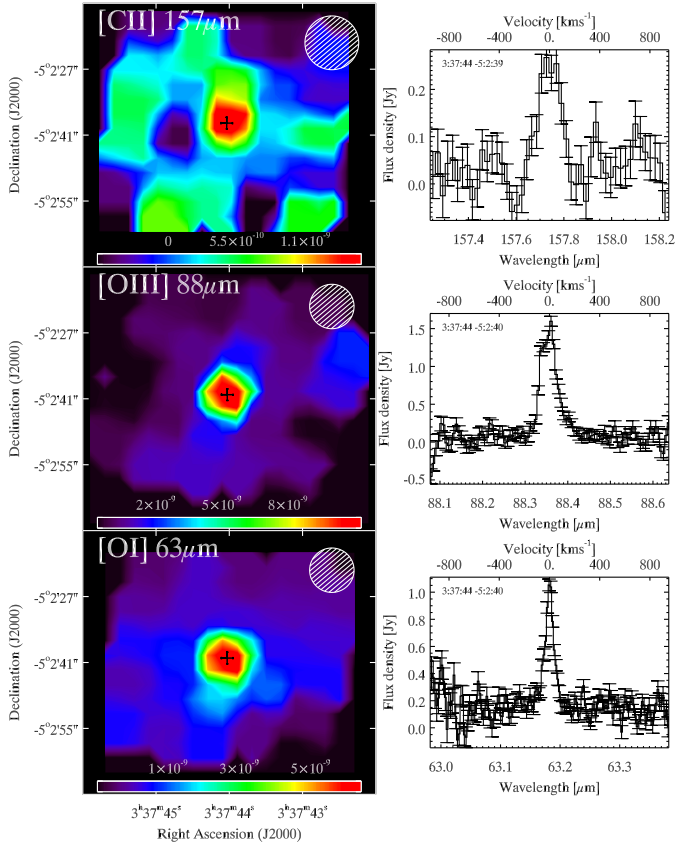
NGC625



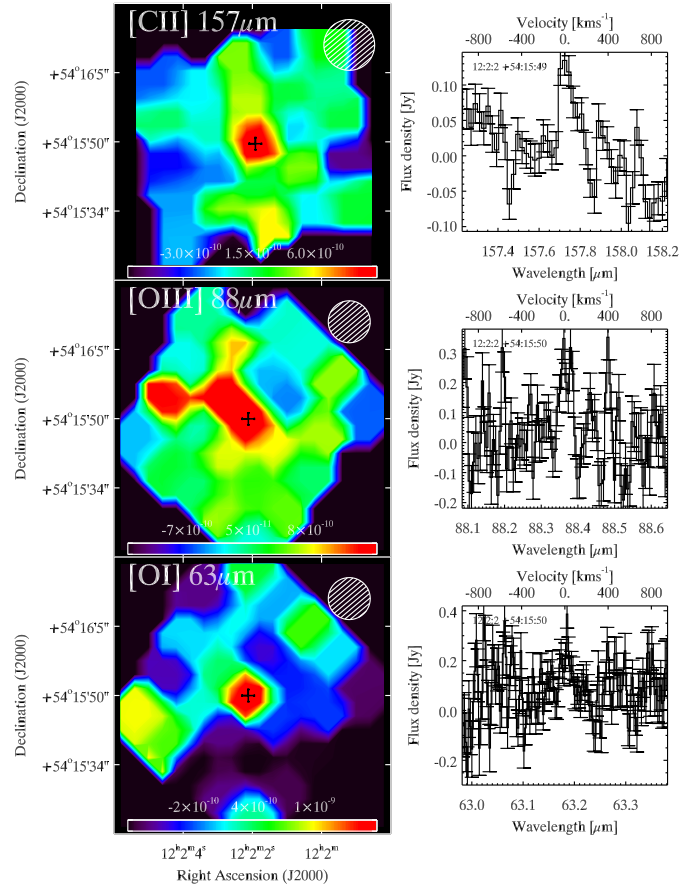
Pox186



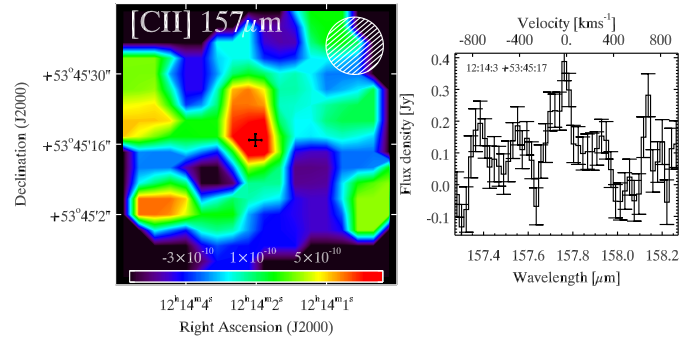
SBS0335-052



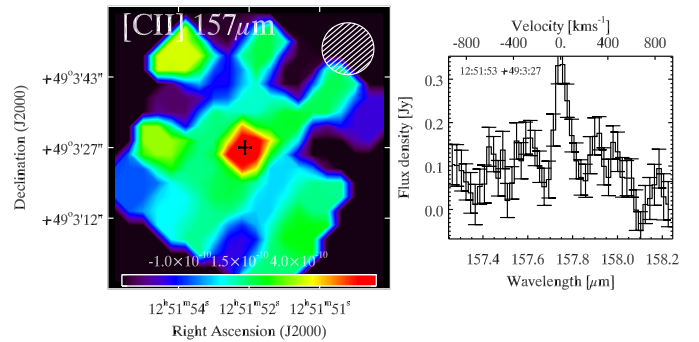
SBS1159+545



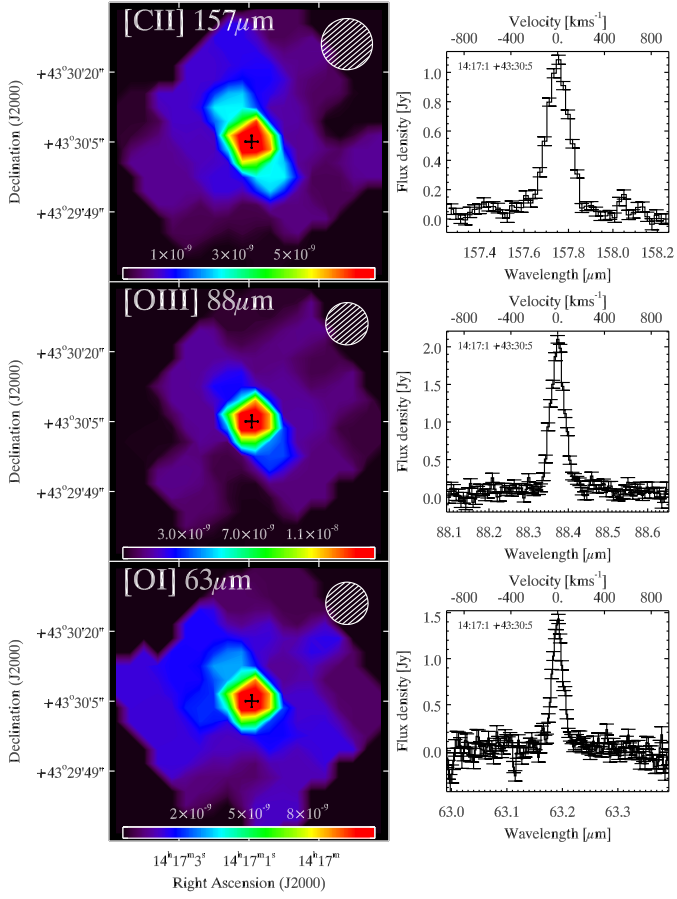
SBS1211+540



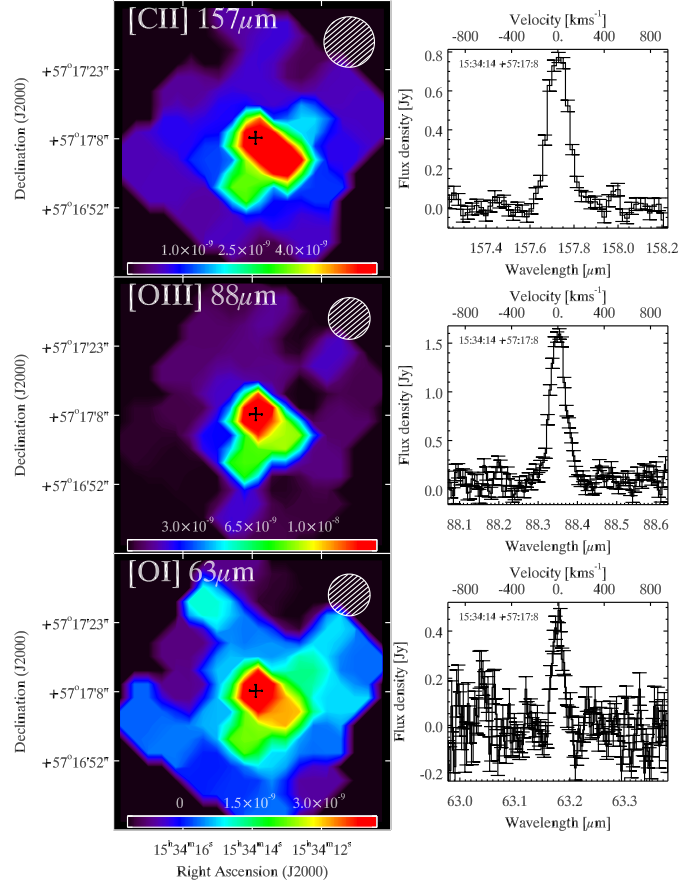
SBS1249+493



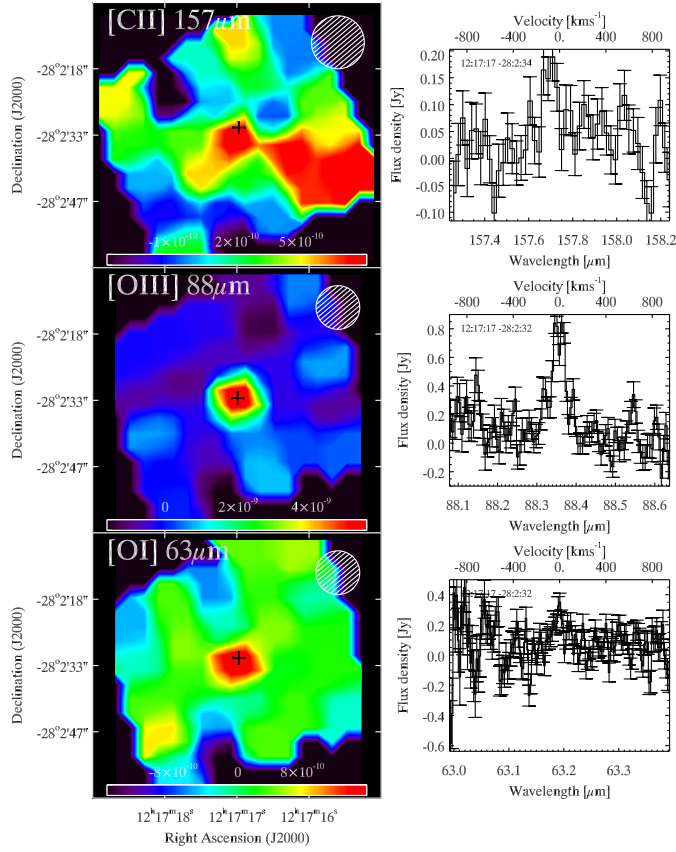
SBS1415+437



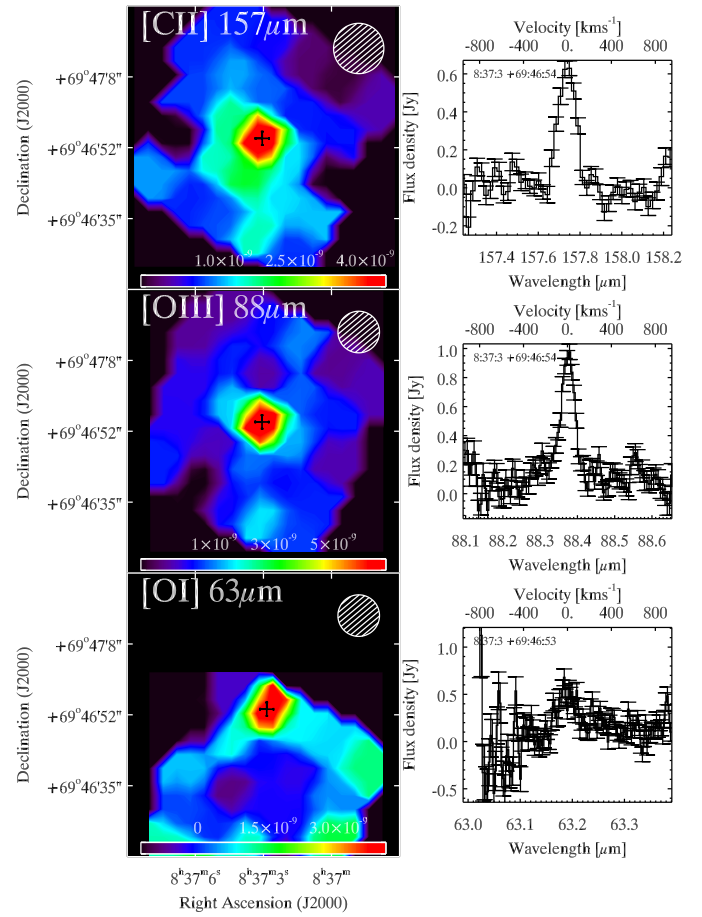
SBS1533+574



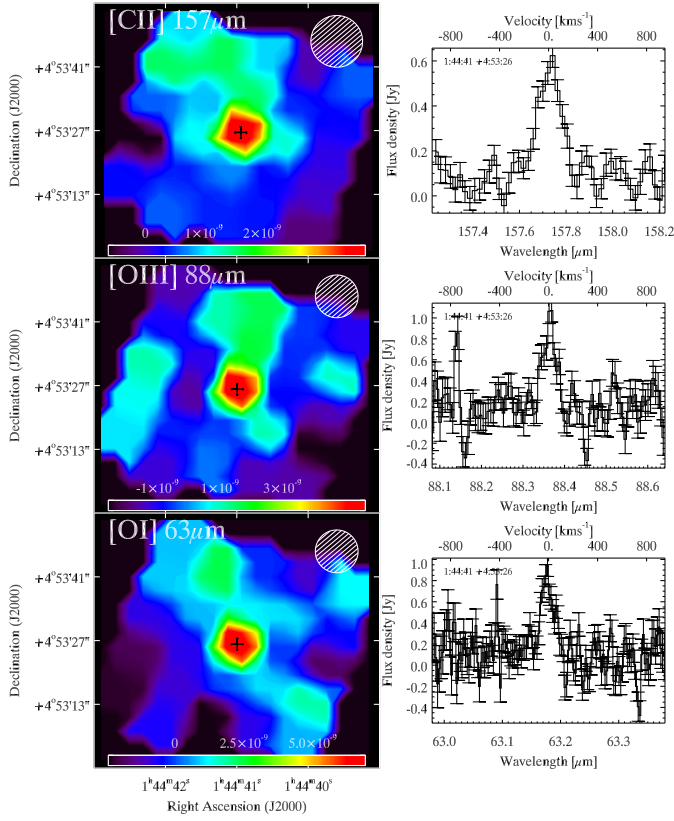
Tol1214-277



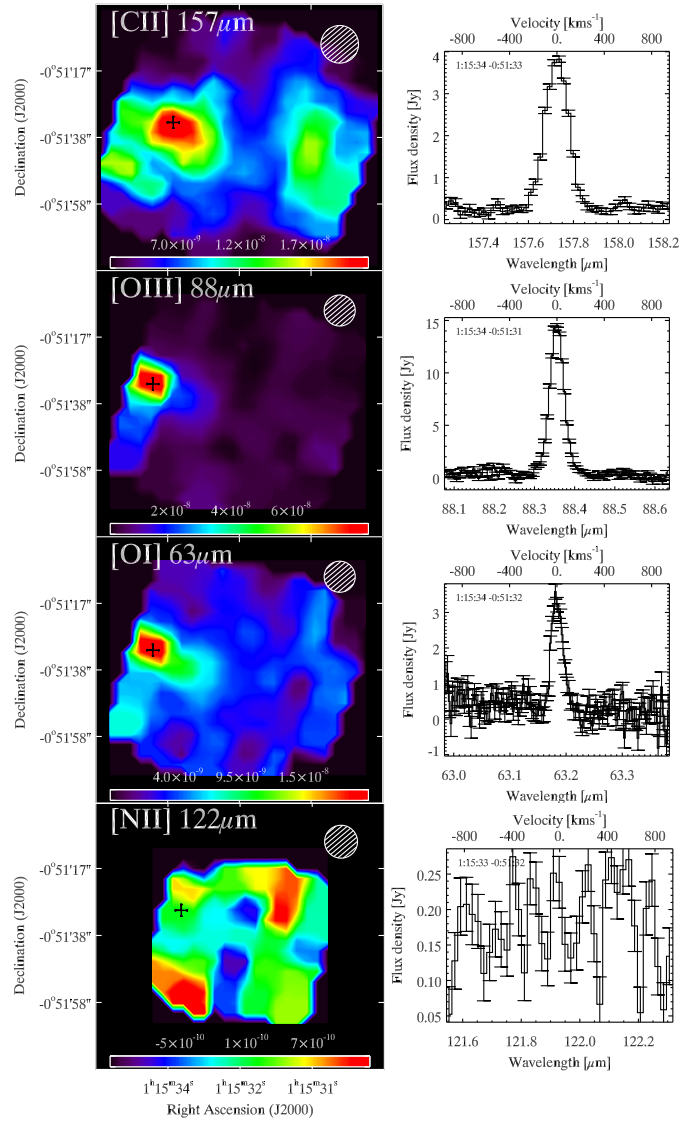
UGC4483



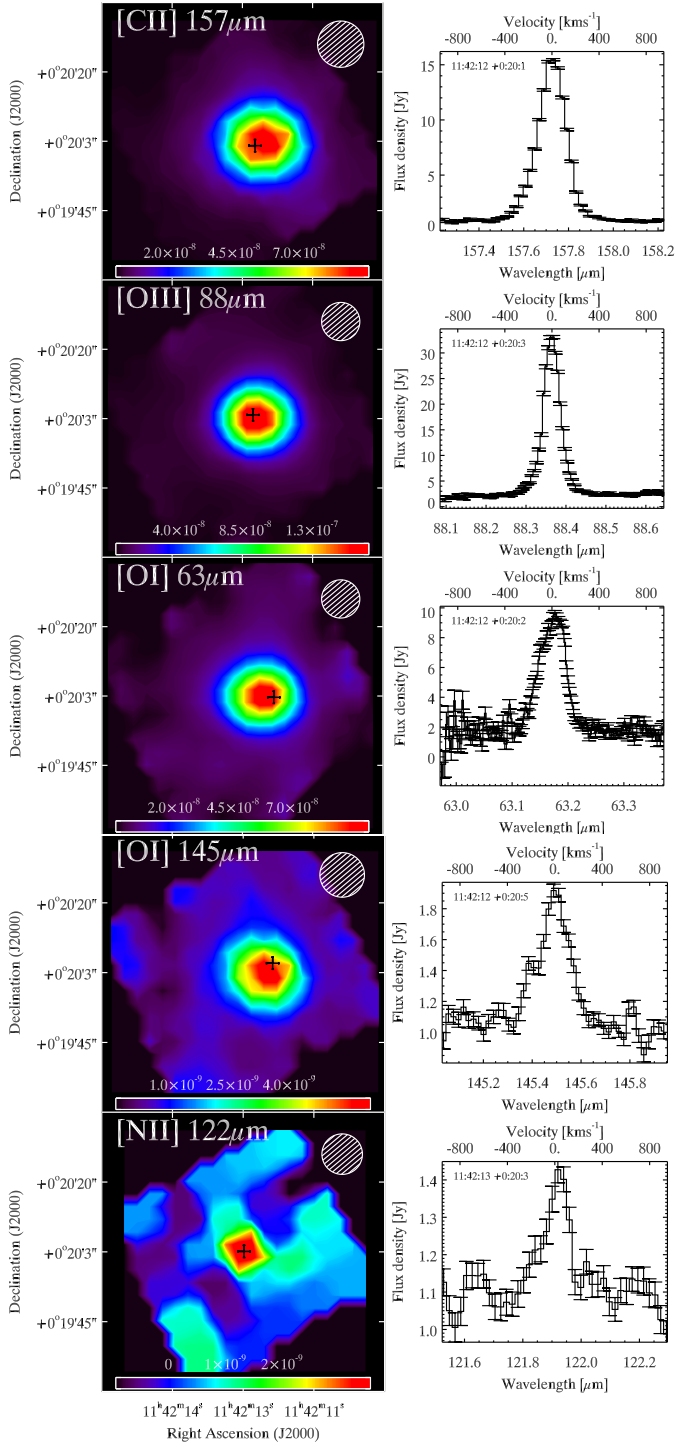
UM133



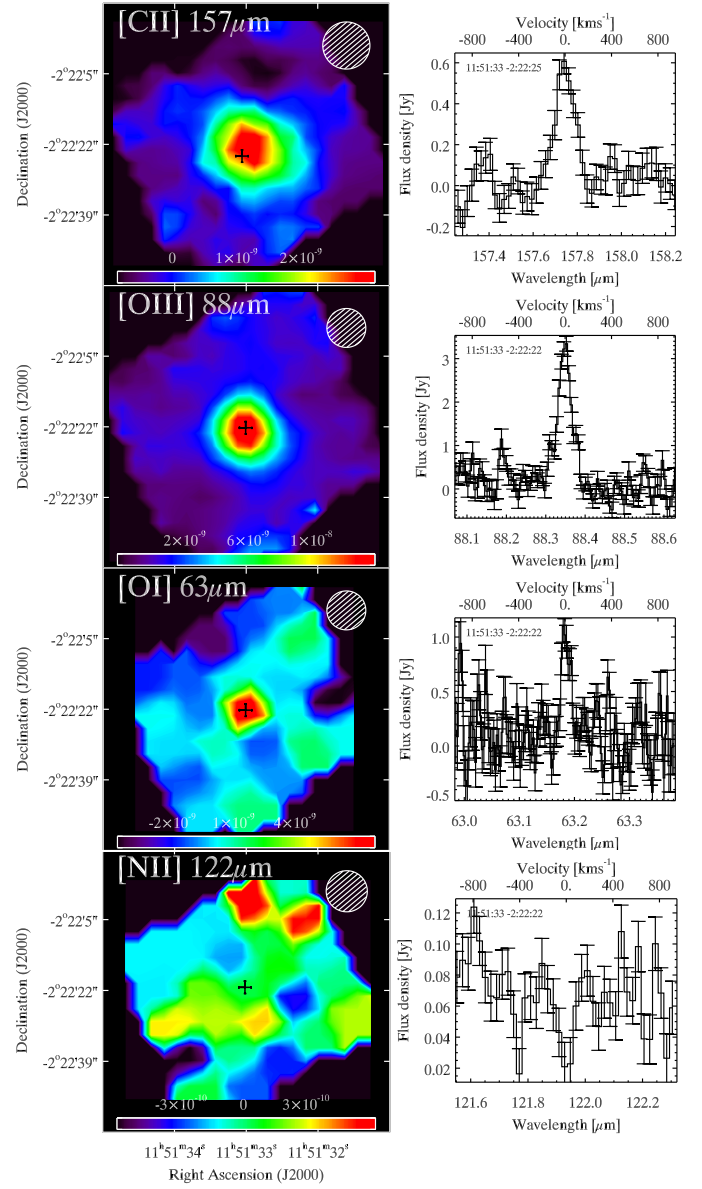
UM311



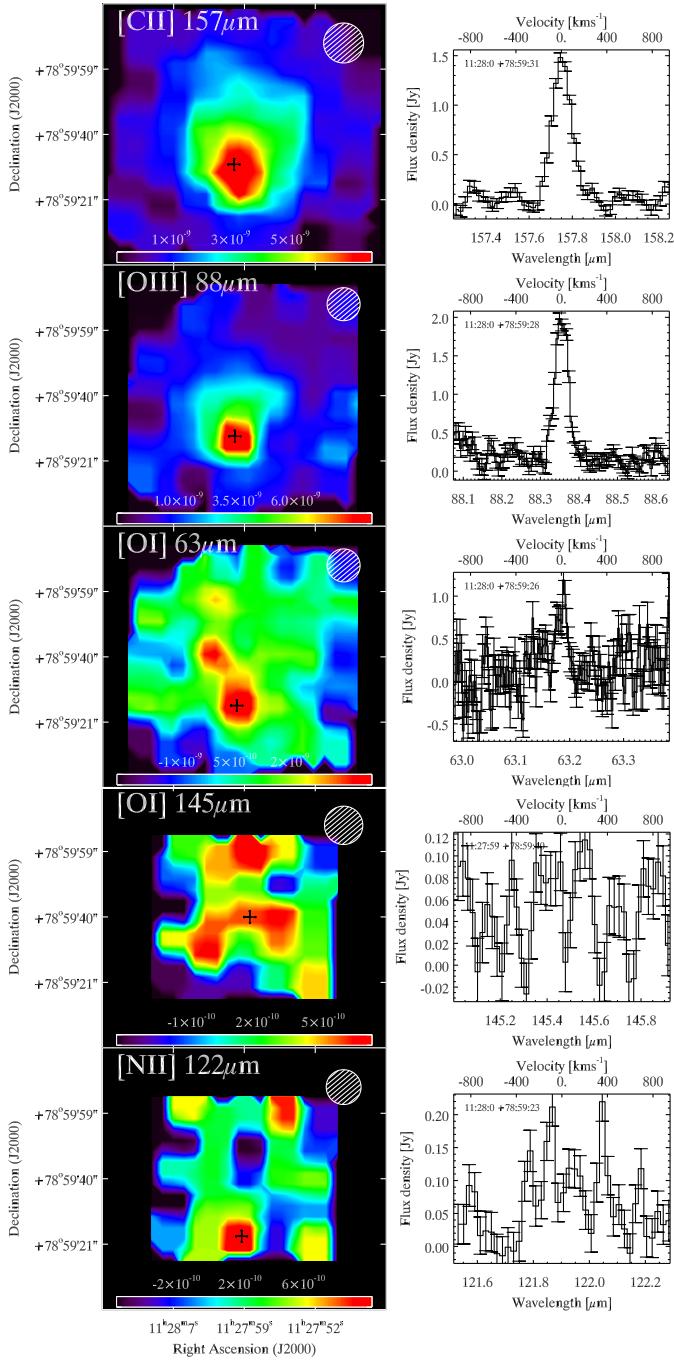
UM448



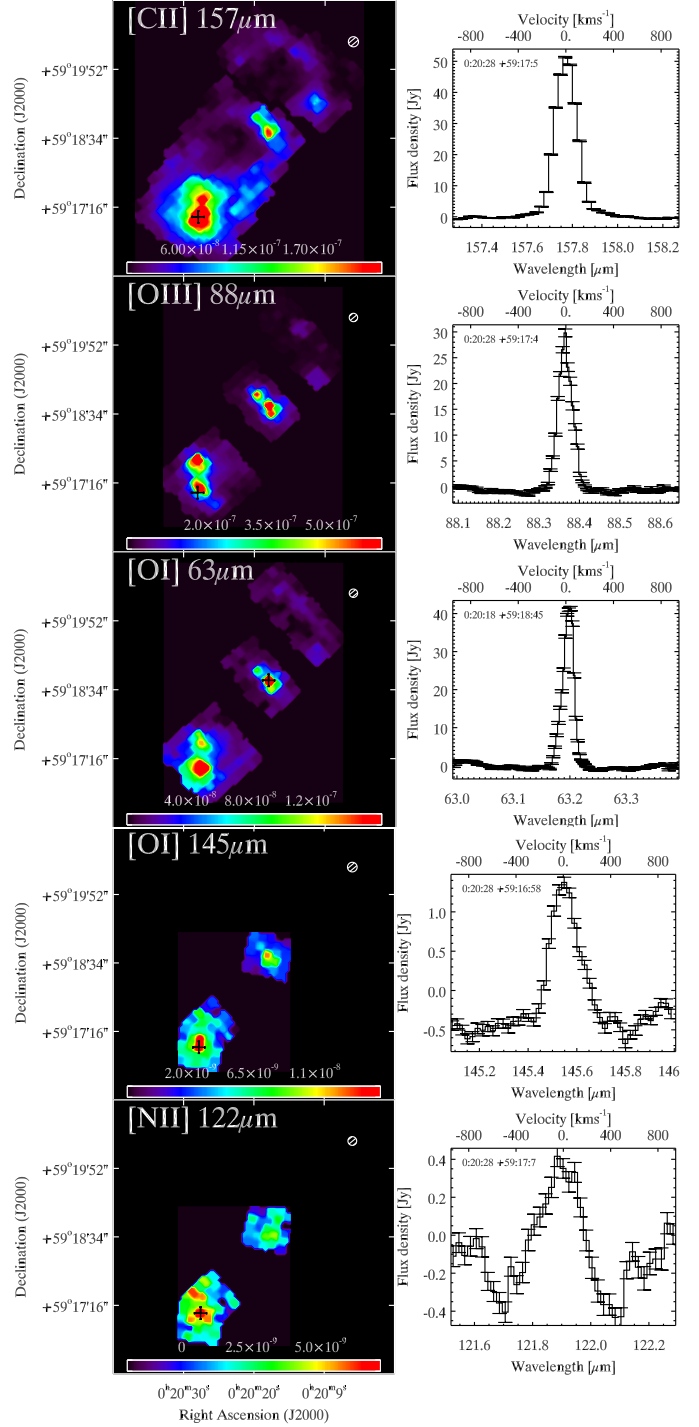
UM461



VII Zw 403

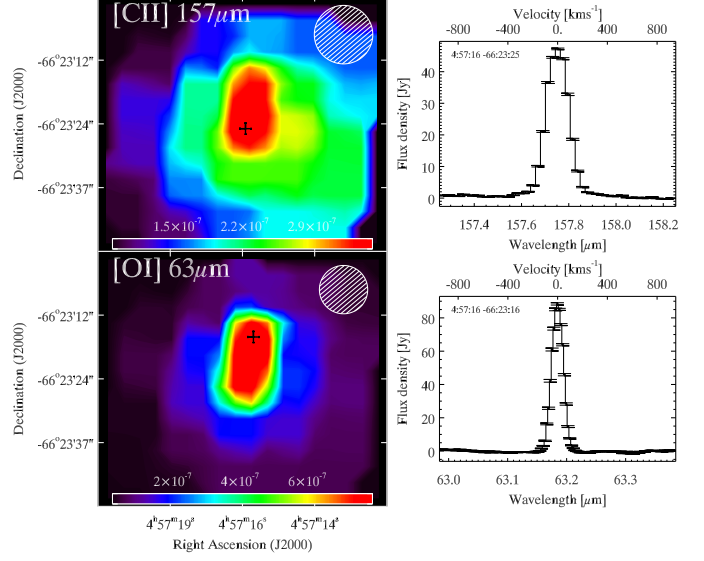
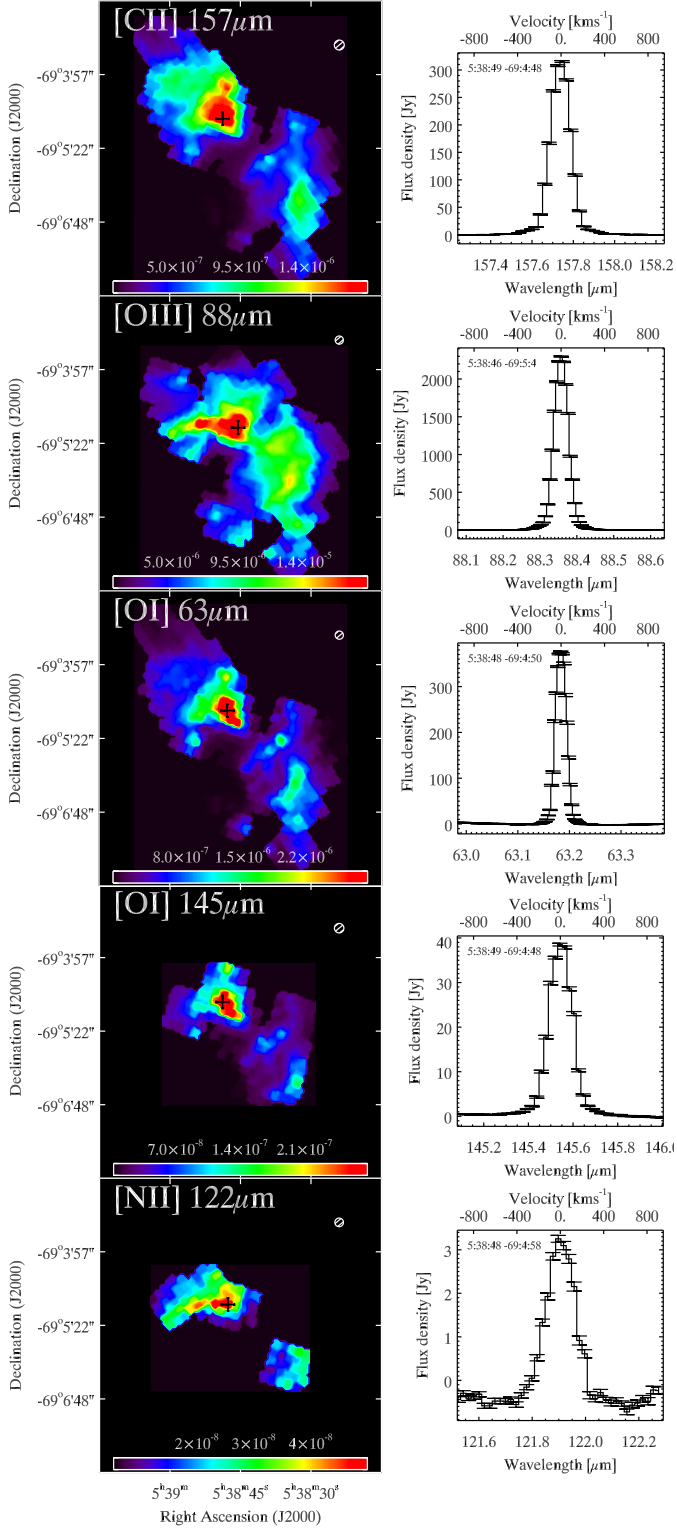


IC10



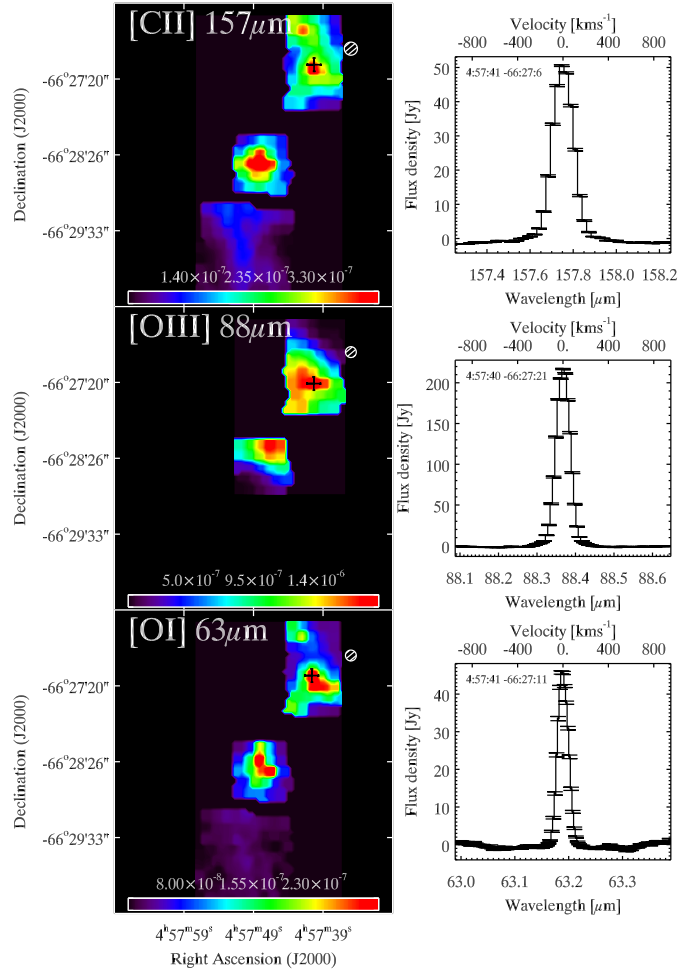
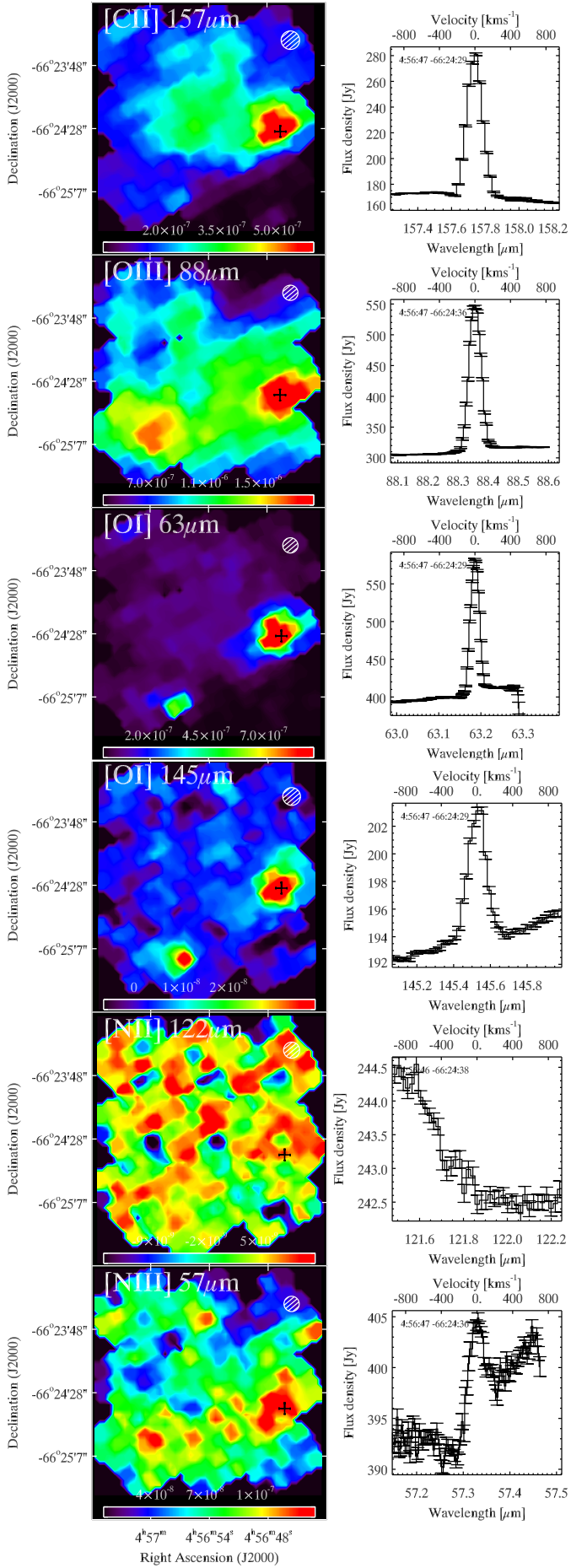
LMC-30Dor

LMC-N11A

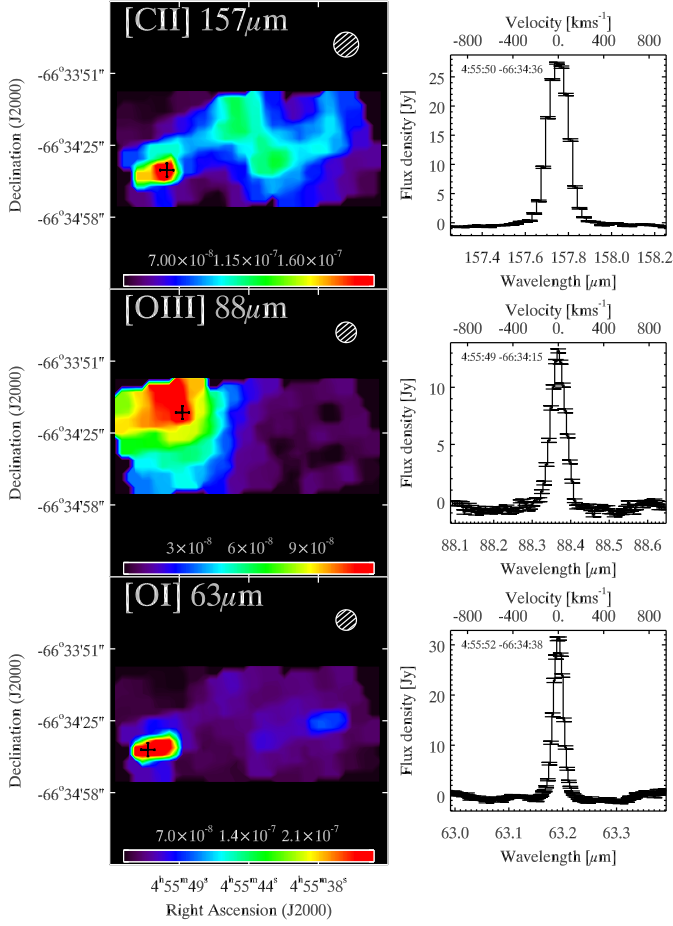


LMC-N11B

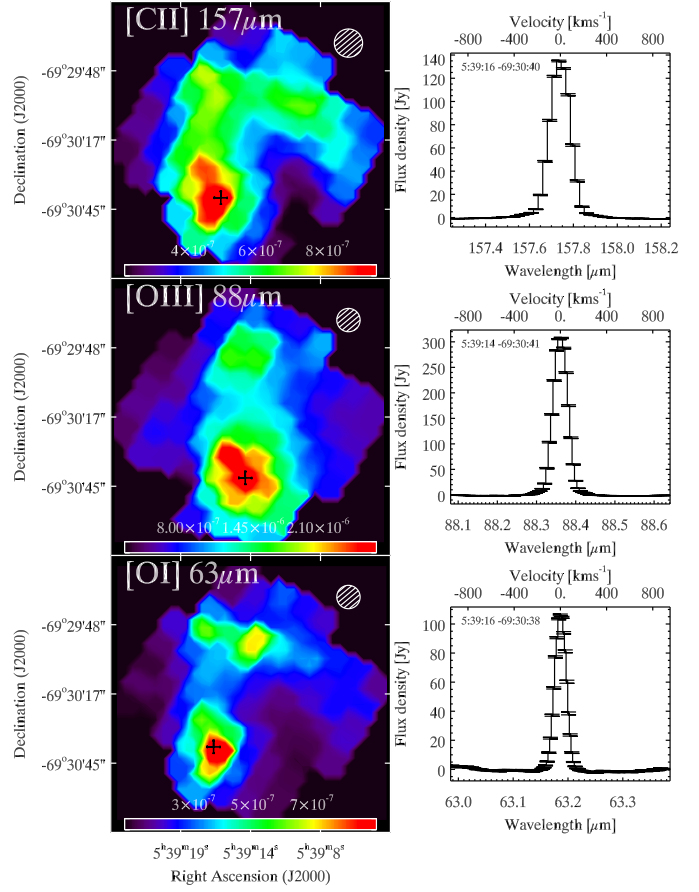
LMC-N11C



LMC-N11I

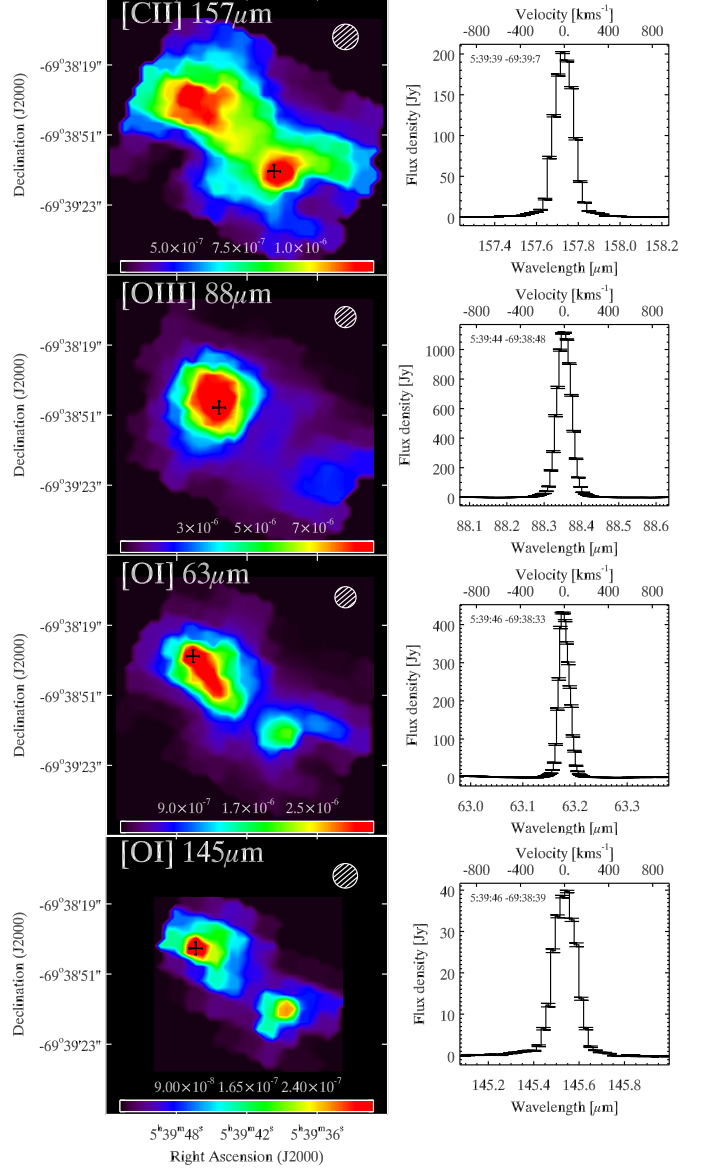
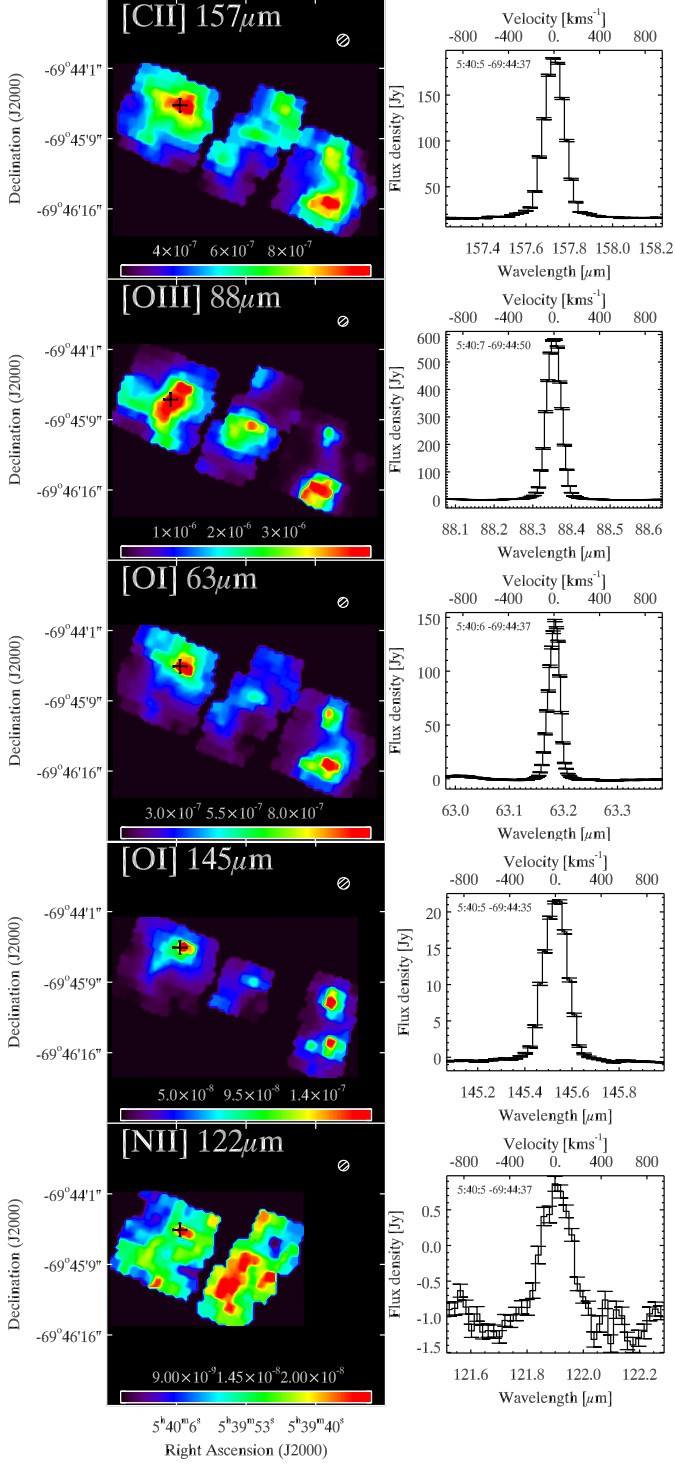


LMC-N158

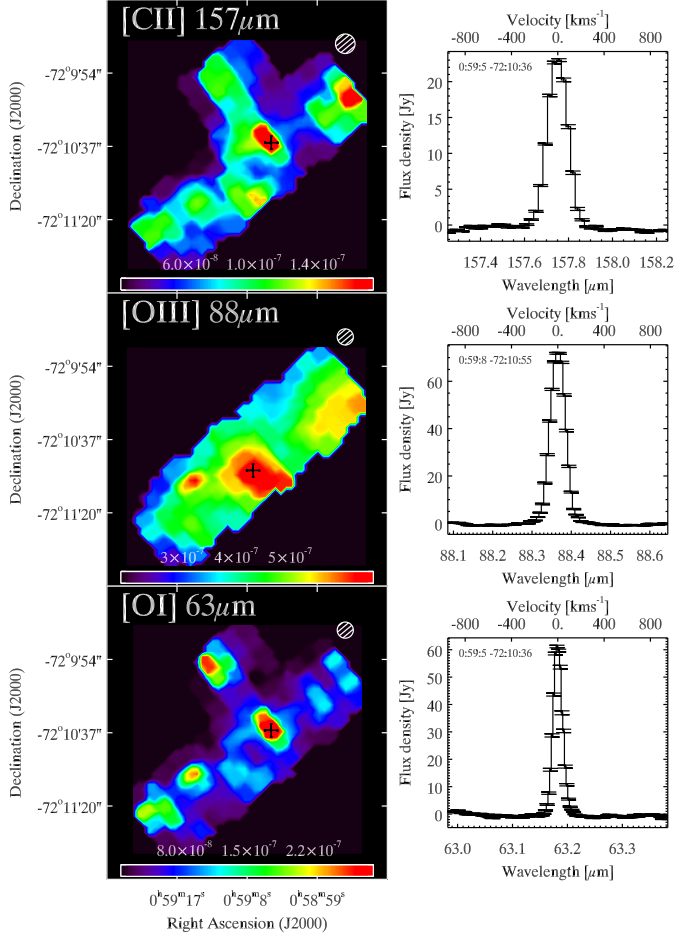


LMC-N159

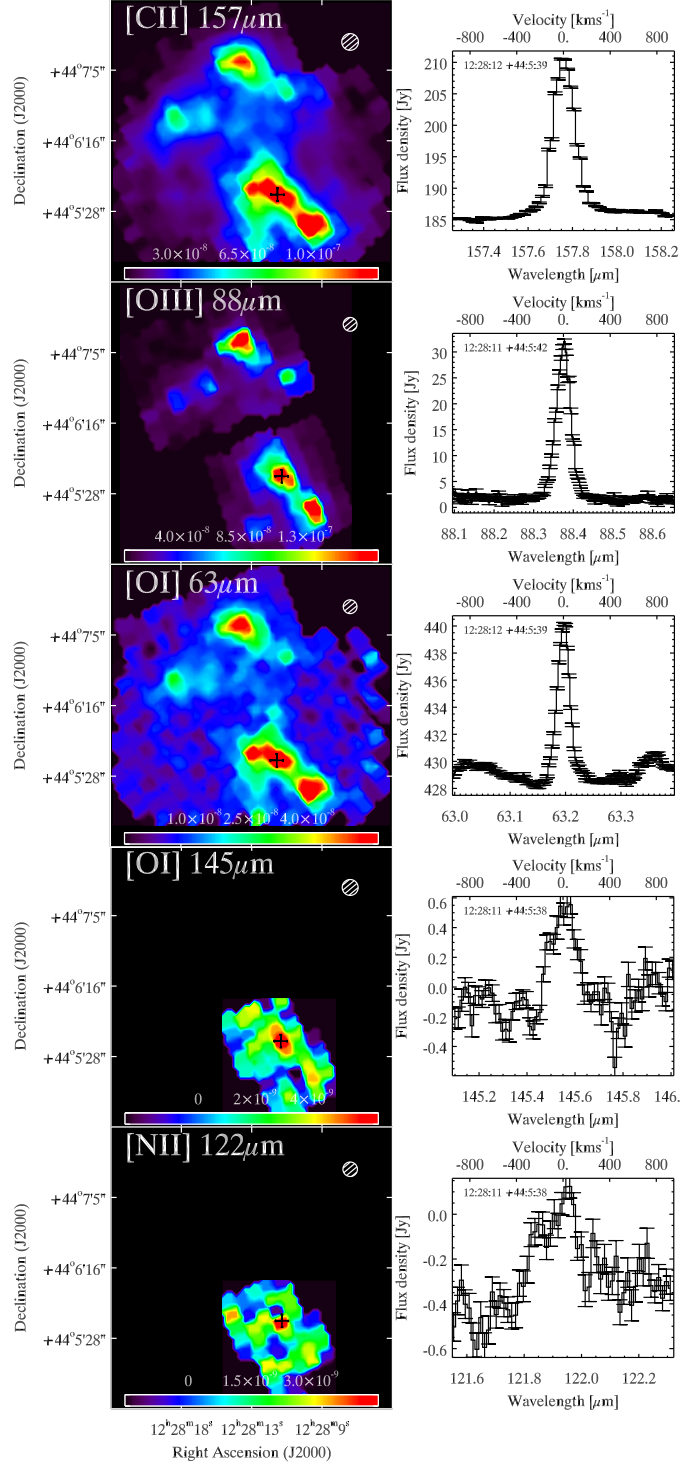
LMC-N160



SMC-N66



NGC4449



NGC6822

