

Planck Early Release Compact Source Catalog

PLCKERC143 (143 GHz)

ILC model of CMB subtracted

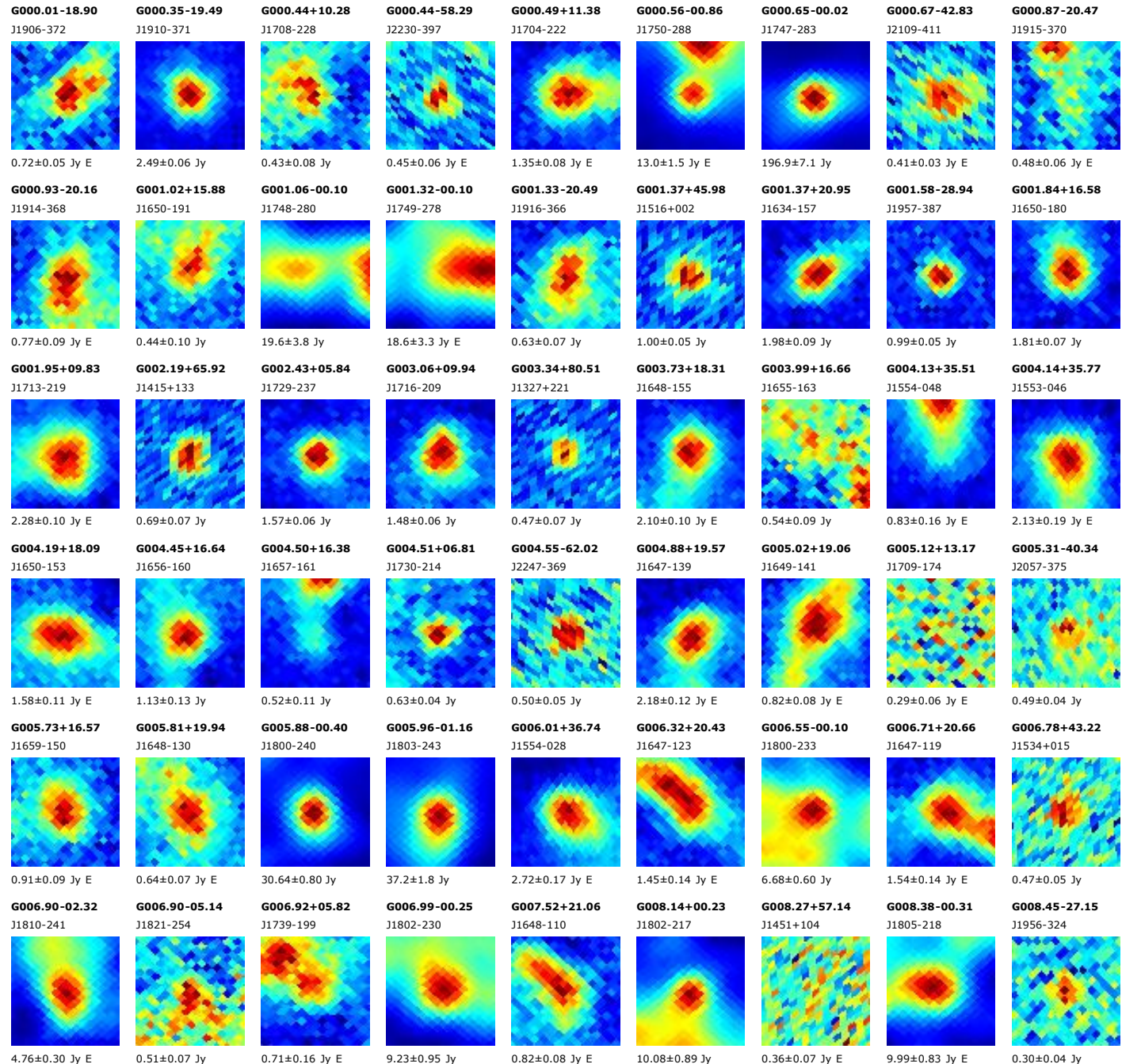
Catalog: ERCSC_f143.fits (1764 sources) sorted by GLON

Origin: U.S. Planck Data Center

Date: 2010-11-17

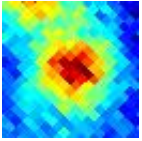
Map: HFI_143.fits

Image width: 0.47 deg



G008.52+21.83

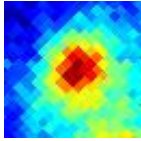
J1647-098



1.09±0.07 Jy E

G008.67+22.14

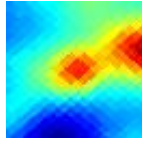
J1647-095



1.19±0.09 Jy E

G008.68-00.35

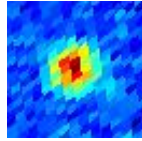
J1806-216



7.5±1.0 Jy E

G008.93+73.03

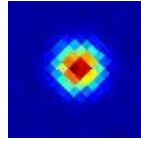
J1357+192



0.87±0.07 Jy

G009.35-19.61

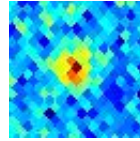
J1924-292



9.13±0.07 Jy

G009.64-32.89

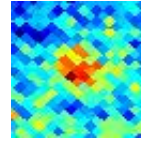
J2024-328



0.43±0.04 Jy

G009.92+06.71

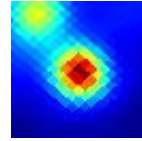
J1743-169



0.42±0.04 Jy E

G010.17-00.33

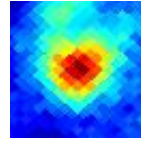
J1809-203



45.4±2.4 Jy

G010.34+02.93

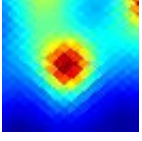
J1757-185



1.52±0.06 Jy

G010.61-00.37

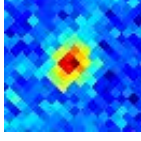
J1810-199



17.4±1.2 Jy

G010.81+25.01

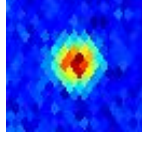
J1642-063



0.51±0.03 Jy

G010.85+40.89

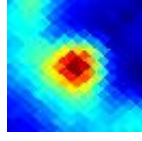
J1549+026



1.14±0.04 Jy

G010.86-02.60

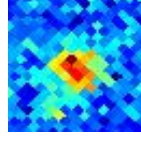
J1819-207



4.17±0.27 Jy

G010.88-12.59

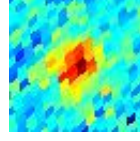
J1858-251



0.40±0.06 Jy E

G011.37+54.57

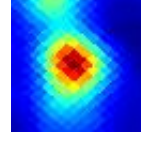
J1504+104



0.63±0.05 Jy

G011.40-01.69

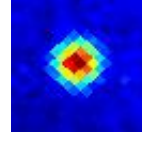
J1816-198



10.02±0.47 Jy E

G012.02+10.80

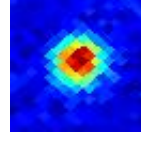
J1733-130



2.22±0.04 Jy

G012.16-05.72

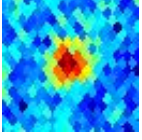
J1833-210



1.54±0.04 Jy

G012.24-39.30

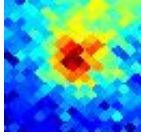
J2056-321



0.38±0.05 Jy E

G012.36-05.21

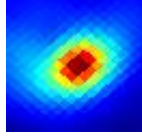
J1832-206



0.61±0.06 Jy

G012.81-00.19

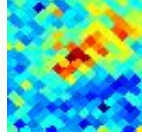
J1814-179



54.5±1.9 Jy

G013.16+06.46

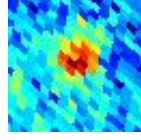
J1750-143



0.52±0.09 Jy E

G013.80-62.93

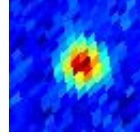
J2248-325



0.29±0.04 Jy

G014.23+42.23

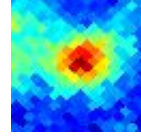
J1550+054



1.06±0.04 Jy

G014.41+03.93

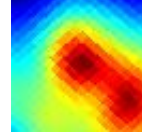
J1802-145



1.01±0.06 Jy

G014.61+00.02

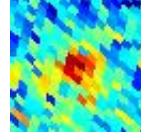
J1817-162



11.9±1.4 Jy E

G014.98-68.50

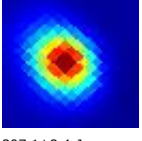
J2314-316



0.46±0.05 Jy

G015.03-00.67

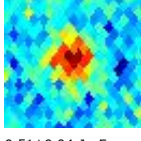
J1820-161



307.1±8.4 Jy

G015.80-39.77

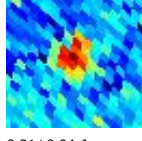
J2101-295



0.51±0.04 Jy E

G015.96-57.59

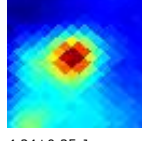
J2223-316



0.31±0.04 Jy

G016.86-02.16

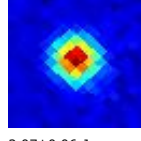
J1829-152



4.24±0.25 Jy

G016.87-13.21

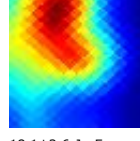
J1911-201



2.07±0.06 Jy

G016.93+00.74

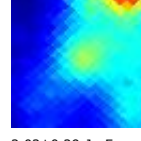
J1818-138



18.1±2.6 Jy E

G017.03-02.40

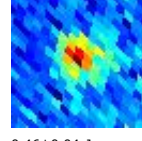
J1830-152



2.02±0.29 Jy E

G017.07-50.79

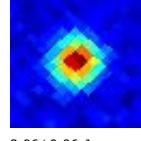
J2151-304



0.46±0.04 Jy

G017.17-16.24

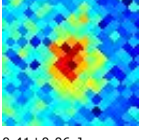
J1923-210



2.06±0.06 Jy

G017.67+17.27

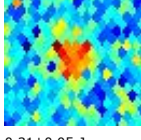
J1721-050



0.41±0.06 Jy

G017.83+39.36

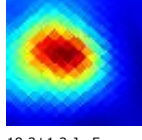
J1606+063



0.31±0.05 Jy

G018.14-00.29

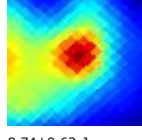
J1825-132



18.3±1.2 Jy E

G018.15+01.96

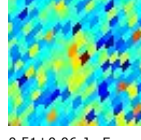
J1816-121



8.74±0.62 Jy

G018.43+43.65

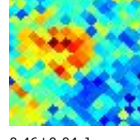
J1551+088



0.51±0.06 Jy E

G018.61+08.86

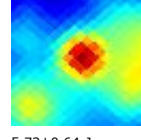
J1753-084



0.46±0.04 Jy

G018.68+01.96

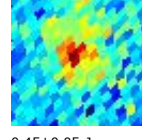
J1817-117



5.73±0.64 Jy

G018.69+61.67

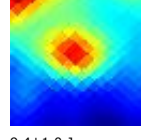
J1446+173



0.45±0.05 Jy

G018.86-00.47

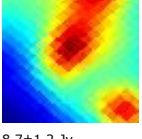
J1827-127



9.4±1.0 Jy

G019.06-00.27

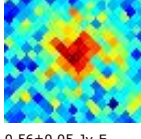
J1826-124



8.7±1.2 Jy

G019.57+27.25

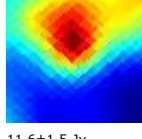
J1651+014



0.56±0.05 Jy E

G019.60-00.25

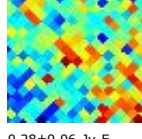
J1827-119



11.6±1.5 Jy

G019.82+20.38

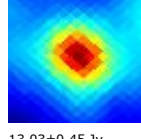
J1715-017



0.28±0.06 Jy E

G020.74-00.08

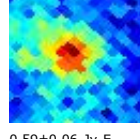
J1829-108



13.03±0.45 Jy

G021.19+04.95

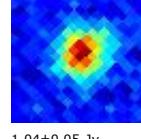
J1812-081



0.59±0.06 Jy E

G021.20+19.63

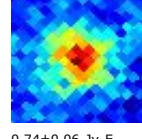
J1720-009



1.04±0.05 Jy

G021.26+12.10

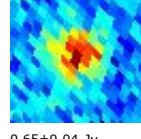
J1746-046



0.74±0.06 Jy E

G021.34-50.26

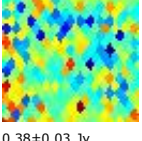
J2151-277



0.65±0.04 Jy

G021.42-40.19

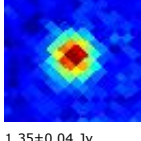
J2107-254



0.38±0.03 Jy

G021.58+13.13

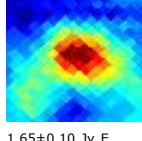
J1743-038



1.35±0.04 Jy

G021.65+03.77

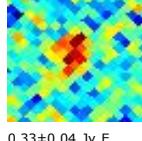
J1817-082



1.65±0.10 Jy E

G021.92-12.46

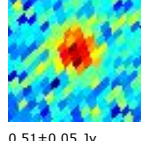
J1916-153



0.33±0.04 Jy E

G022.54+52.56

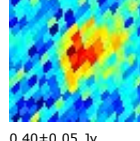
J1524+153



0.51±0.05 Jy

G023.01+42.17

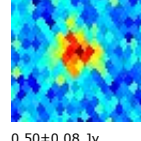
J1603+111



0.40±0.05 Jy

G023.02+40.78

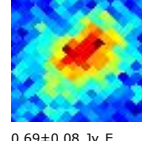
J1608+104



0.50±0.08 Jy

G023.35+11.81

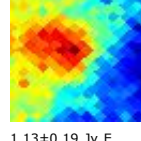
J1751-029



0.69±0.08 Jy E

G023.36+08.20

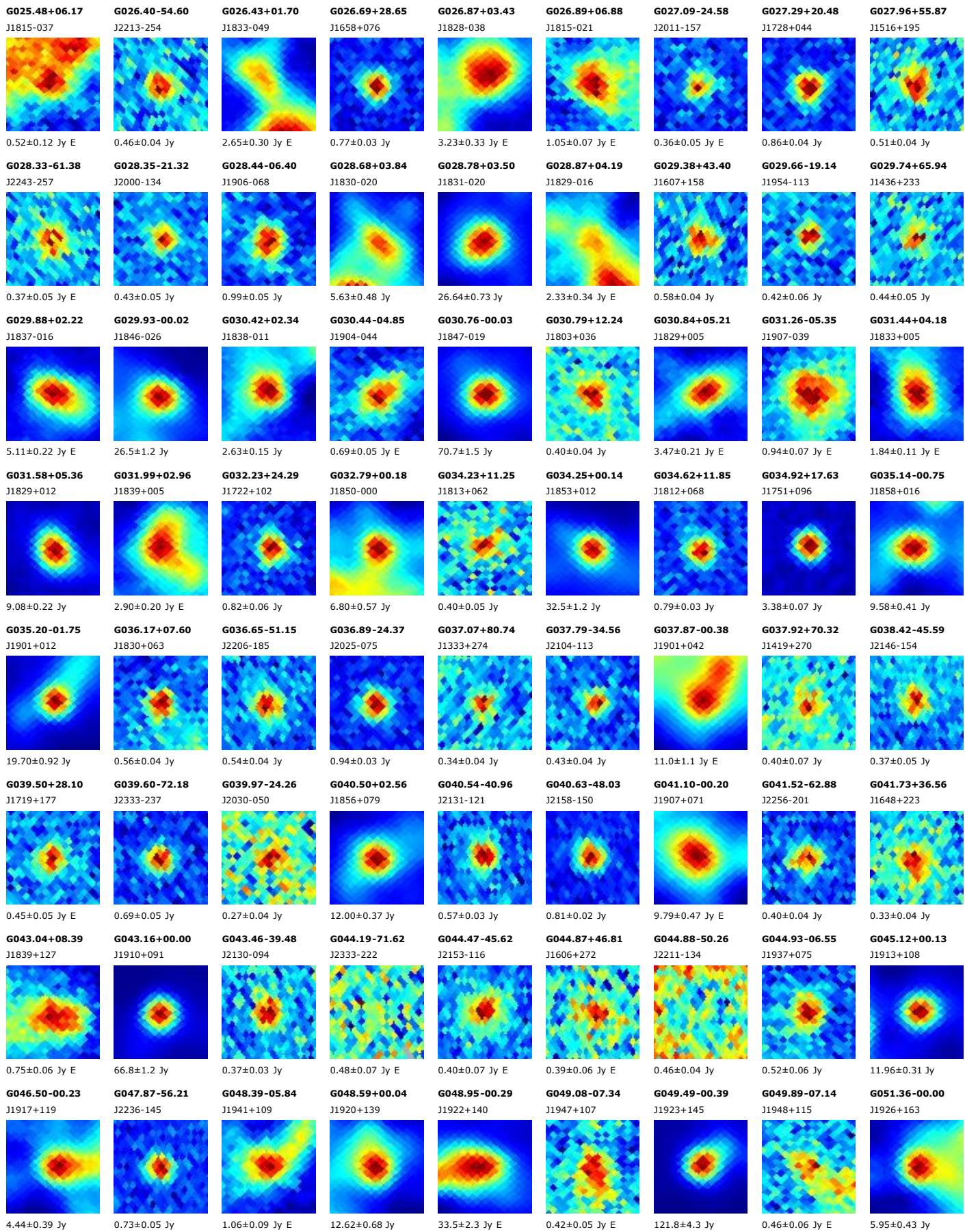
J1804-046



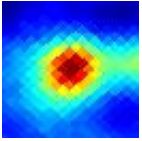
1.13±0.19 Jy E

G023.43-00.20

J1834-085

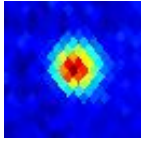


G052.22+00.72
J1925+174



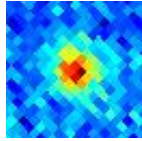
5.05±0.23 Jy E

G052.40-36.51
J2134-018



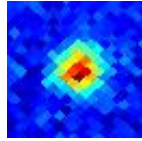
1.49±0.03 Jy

G052.69-26.64
J2101+036



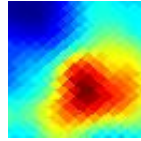
0.57±0.05 Jy

G052.76-07.30
J1955+139



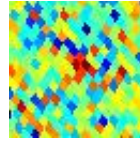
0.79±0.03 Jy

G053.18+00.18
J1928+180



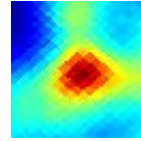
3.36±0.54 Jy

G053.38+54.39
J1534+334



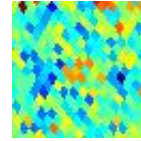
0.47±0.06 Jy E

G053.60+00.05
J1930+183



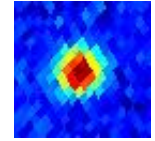
4.02±0.25 Jy

G053.75+48.73
J1602+334



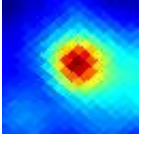
0.45±0.06 Jy E

G053.85-57.06
J2246-121



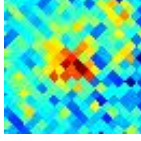
0.95±0.03 Jy

G054.12-00.07
J1931+187



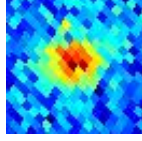
6.49±0.29 Jy

G054.55+25.05
J1751+293



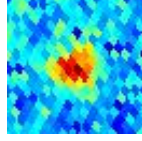
0.31±0.05 Jy E

G054.57+76.05
J1352+314



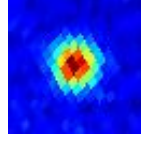
0.38±0.04 Jy

G055.12+46.38
J1613+341



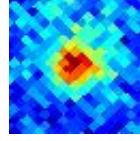
0.56±0.05 Jy

G055.21-51.70
J2229-085



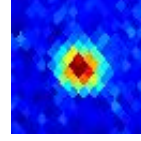
1.56±0.04 Jy

G055.38-17.23
J2035+109



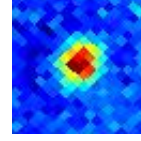
0.45±0.03 Jy

G055.47-35.57
J2136+007



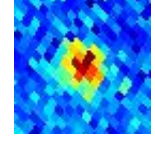
0.99±0.04 Jy

G056.13-15.77
J2031+123



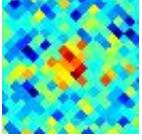
0.86±0.04 Jy

G056.57+80.68
J1331+305



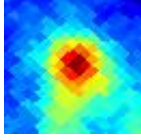
0.67±0.05 Jy

G056.68-20.67
J2049+100



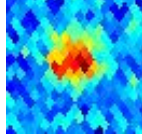
0.36±0.05 Jy

G057.12+03.64
J1923+231



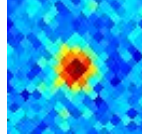
1.39±0.11 Jy

G057.69-40.34
J2156-006



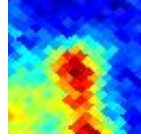
0.51±0.05 Jy

G058.00-30.11
J2123+055



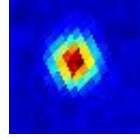
0.46±0.05 Jy

G058.13+03.51
J1926+239



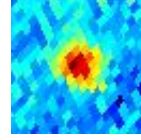
0.92±0.10 Jy E

G058.95-48.85
J2225-049



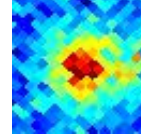
2.54±0.08 Jy

G059.05-46.64
J2218-035



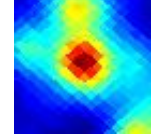
0.61±0.03 Jy

G059.45-11.62
J2024+173



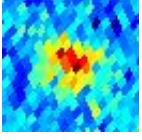
0.59±0.05 Jy E

G059.79+00.04
J1943+237



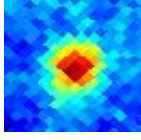
3.83±0.23 Jy

G059.91-42.36
J2206-005



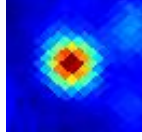
0.58±0.03 Jy E

G060.84-03.68
J1959+227



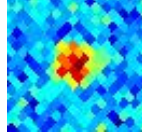
0.88±0.05 Jy

G060.87-00.12
J1946+245



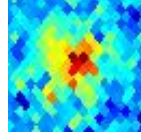
4.70±0.12 Jy

G061.05+30.15
J1735+362



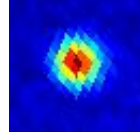
0.38±0.03 Jy

G061.06-35.40
J2146+044



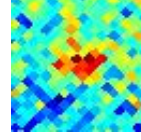
0.32±0.05 Jy E

G061.07+42.33
J1635+381



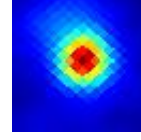
2.66±0.05 Jy

G061.29+17.43
J1835+326



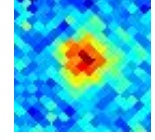
0.39±0.05 Jy E

G061.48+00.08
J1946+252



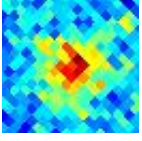
10.16±0.24 Jy

G062.05+14.69
J1848+323



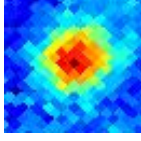
0.43±0.03 Jy

G062.07-27.27
J2123+101



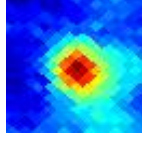
0.41±0.04 Jy

G062.20-04.52
J2005+234



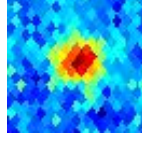
0.72±0.06 Jy

G062.58+02.41
J1940+273



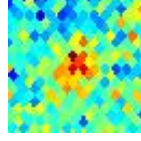
1.28±0.08 Jy

G062.66+38.94
J1653+390



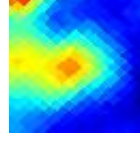
0.60±0.06 Jy

G062.80+33.61
J1720+384



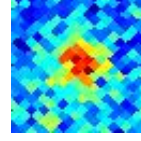
0.42±0.06 Jy E

G062.92+00.10
J1950+264



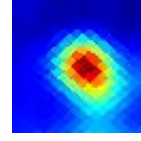
2.19±0.23 Jy E

G063.02+11.74
J1902+319



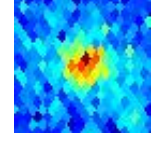
0.29±0.05 Jy E

G063.18+00.43
J1949+268



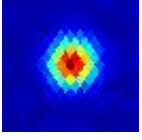
7.43±0.32 Jy

G063.38+41.41
J1640+397



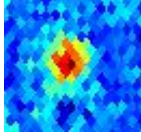
0.33±0.06 Jy

G063.45+40.94
J1642+398



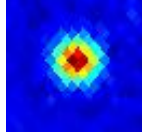
4.05±0.05 Jy

G063.58+38.85
J1653+397



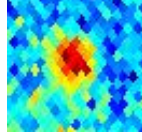
0.47±0.06 Jy

G063.66-34.08
J2148+069



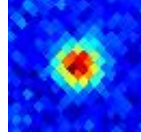
2.03±0.04 Jy

G063.96+37.42
J1701+399



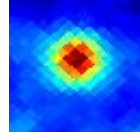
0.44±0.05 Jy

G064.03+31.01
J1734+389



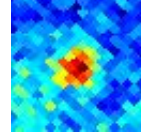
0.91±0.04 Jy

G064.13-00.48
J1955+272



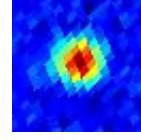
2.55±0.08 Jy

G064.78+05.03
J1934+305



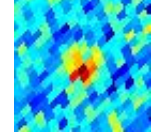
0.33±0.06 Jy

G065.53-71.89
J2348-165



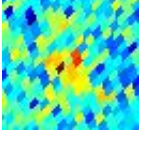
1.39±0.05 Jy

G065.70-70.97
J2345-159



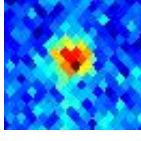
0.32±0.06 Jy

G065.71-53.59
J2251-046



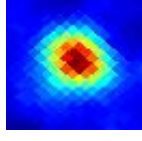
0.38±0.07 Jy E

G065.79-32.27
J2147+094



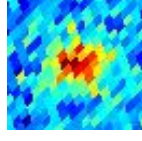
0.38±0.04 Jy

G065.80-02.60
J2007+275



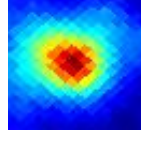
4.59±0.11 Jy

G065.84-45.33
J2226+008



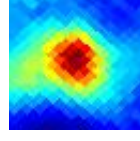
0.39±0.03 Jy

G066.14-03.17
J2010+274



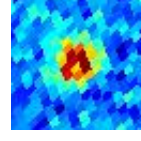
3.22±0.15 Jy E

G066.64-03.23
J2011+278



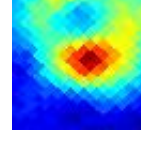
1.81±0.12 Jy E

G068.01-86.34
J0038-249



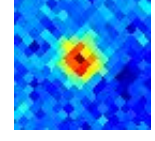
0.51±0.04 Jy

G068.17+00.91
J1959+313



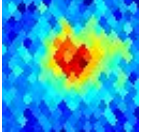
1.30±0.19 Jy E

G068.52-27.54
J2139+143



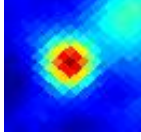
0.39±0.06 Jy

G068.54-38.82
J2212+067



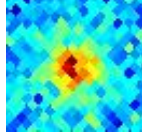
0.39±0.03 Jy

G069.53-00.97
J2010+315



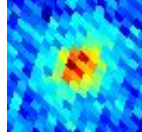
3.41±0.12 Jy

G069.62+29.17
J1748+433



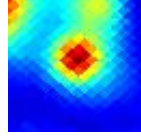
0.23±0.04 Jy

G069.82+68.38
J1419+383



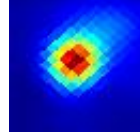
0.40±0.03 Jy

G069.92+01.49
J2001+331



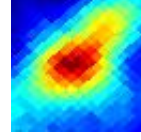
5.09±0.29 Jy

G070.29+01.59
J2001+335



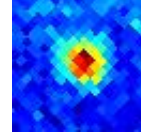
21.36±0.60 Jy

G070.43-01.55
J2014+319



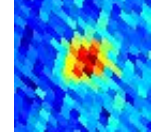
2.76±0.19 Jy E

G070.96+27.08
J1801+440



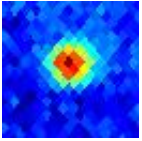
0.59±0.03 Jy

G071.32+58.47
J1506+426



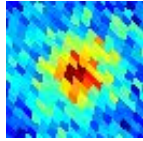
0.41±0.04 Jy

G071.42+33.26
J1727+455



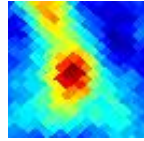
0.75±0.03 Jy

G071.49+55.61
J1521+436



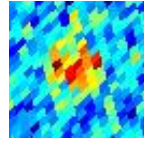
0.35±0.06 Jy E

G071.79+00.87
J2008+344



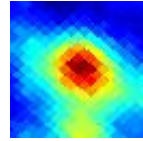
1.36±0.08 Jy E

G071.80-53.51
J2301-019



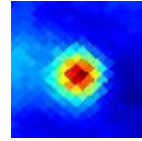
0.51±0.06 Jy

G071.91+01.30
J2007+347



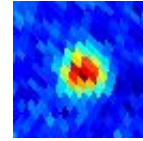
2.19±0.12 Jy E

G073.13-02.35
J2025+337



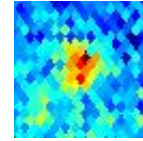
2.62±0.11 Jy

G073.44+41.88
J1637+472



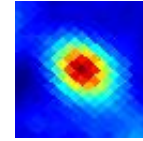
0.86±0.06 Jy

G073.70+38.42
J1658+476



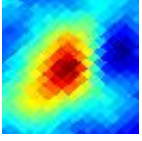
0.27±0.04 Jy

G074.01-01.71
J2025+348



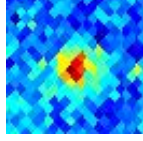
3.17±0.11 Jy

G074.12+00.14
J2017+359



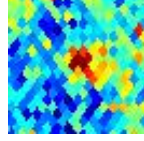
2.32±0.15 Jy E

G074.22+31.40
J1739+476



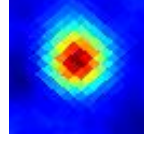
0.39±0.04 Jy

G074.38+38.46
J1657+481



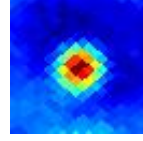
0.38±0.04 Jy E

G074.75+00.60
J2017+367



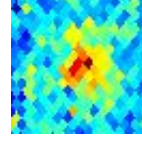
4.92±0.12 Jy

G074.87+01.22
J2015+371



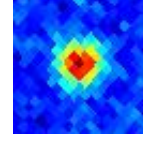
2.36±0.10 Jy

G075.60-36.66
J2222+122



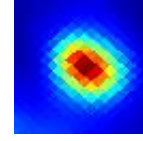
0.38±0.05 Jy

G075.66-29.64
J2203+174



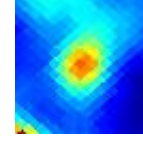
0.96±0.04 Jy

G075.81+00.37
J2021+374



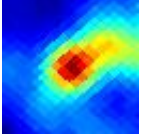
19.27±0.51 Jy

G076.14-00.28
J2025+373



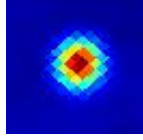
2.69±0.13 Jy

G076.19+00.09
J2023+376



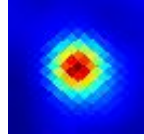
4.37±0.31 Jy E

G076.20+05.74
J1959+407



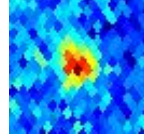
6.37±0.06 Jy

G076.38-00.61
J2027+373



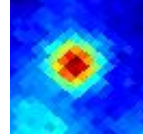
17.92±0.35 Jy

G076.63+40.07
J1647+498



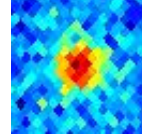
0.32±0.03 Jy

G076.80+04.29
J2007+404



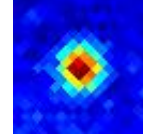
1.51±0.08 Jy

G076.86+31.73
J1739+499



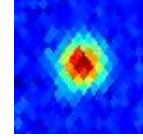
0.45±0.03 Jy

G077.22+23.51
J1829+487



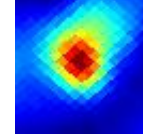
1.01±0.04 Jy

G077.43-38.58
J2232+117



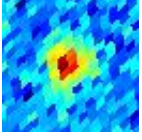
1.98±0.05 Jy

G077.44+01.75
J2020+396



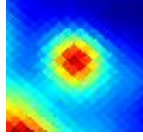
7.59±0.38 Jy

G077.72-58.21
J2323-032



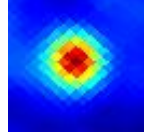
0.61±0.05 Jy

G077.97-00.00
J2029+390



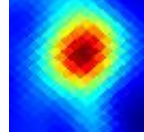
6.11±0.40 Jy

G078.02+00.59
J2027+394



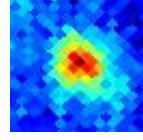
10.01±0.25 Jy

G078.18-00.39
J2031+389



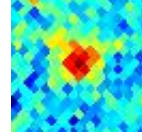
13.55±0.70 Jy E

G078.29-04.85
J2050+363



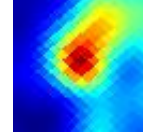
0.66±0.05 Jy

G078.37-30.04
J2211+187



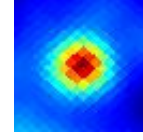
0.30±0.04 Jy

G079.29+00.29
J2032+402



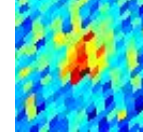
8.78±0.75 Jy E

G079.30+01.30
J2028+408



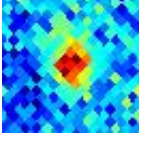
11.63±0.27 Jy

G079.31-52.07
J2311+020



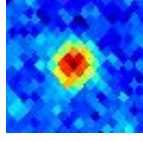
0.33±0.05 Jy

G079.32-28.73
J2210+202



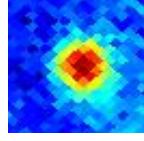
0.39±0.05 Jy

G079.55+31.74
J1740+521



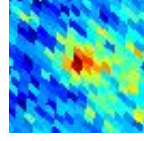
0.75±0.04 Jy

G080.17-06.49
J2102+367



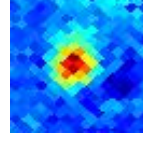
0.43±0.07 Jy E

G080.22+49.05
J1549+506



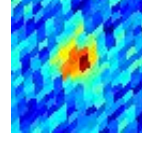
0.26±0.03 Jy

G080.26-08.35
J2109+355



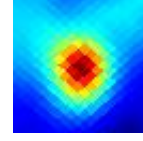
0.52±0.07 Jy

G080.41-45.55
J2257+076



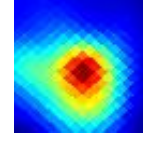
0.48±0.05 Jy

G080.86+00.41
J2036+416



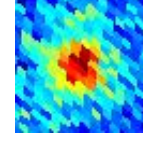
11.52±0.51 Jy

G080.94-00.12
J2039+413



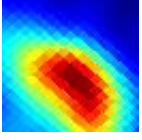
11.68±0.79 Jy

G081.07+57.42
J1500+478



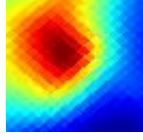
0.35±0.06 Jy E

G081.34+01.23
J2034+424



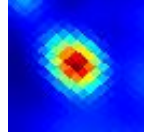
11.3±1.3 Jy E

G081.50-00.02
J2040+418



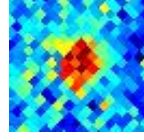
10.8±1.6 Jy E

G081.69+00.55
J2039+423



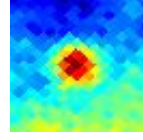
32.61±0.75 Jy

G082.25-26.09
J2212+239



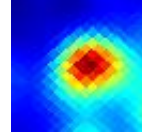
0.43±0.06 Jy

G082.30+06.86
J2012+464



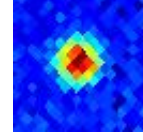
0.71±0.08 Jy

G082.59+00.41
J2042+429



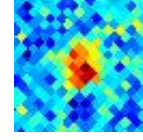
8.63±0.45 Jy

G083.14-30.09
J2225+212



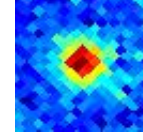
1.10±0.05 Jy

G083.50-26.45
J2216+243



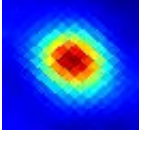
0.41±0.04 Jy

G083.55+12.78
J1944+505



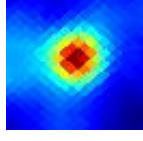
0.35±0.03 Jy

G083.77+03.30
J2033+456



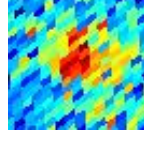
7.55±0.21 Jy

G083.94+00.77
J2045+442



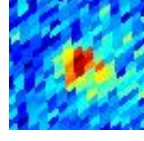
3.57±0.11 Jy

G084.25-58.56
J2335-015



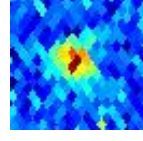
0.46±0.06 Jy

G084.26-59.73
J2337-024



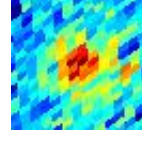
0.47±0.04 Jy

G084.41-40.25
J2254+136



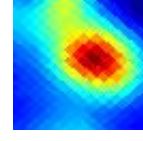
0.59±0.03 Jy

G084.63-71.06
J0004-118



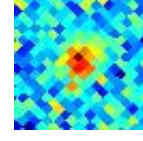
0.37±0.06 Jy E

G084.64+00.16
J2050+444



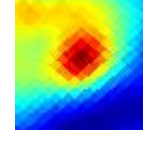
6.07±0.40 Jy

G084.73-18.22
J2157+314



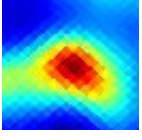
0.30±0.05 Jy

G084.80+03.76
J2035+467



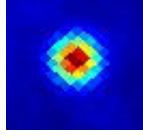
2.92±0.39 Jy E

G084.82-01.11
J2056+437



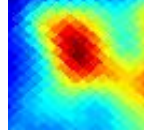
9.82±0.60 Jy E

G084.93-03.50
J2107+422



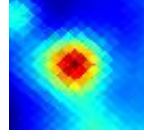
4.27±0.07 Jy

G085.03+00.37
J2051+448



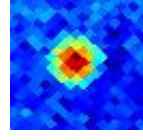
3.26±0.25 Jy E

G085.04-00.13
J2053+445



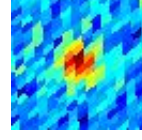
5.71±0.28 Jy

G085.28+11.76
J1955+515



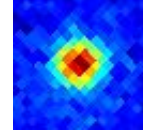
0.43±0.06 Jy E

G085.41-50.91
J2320+052



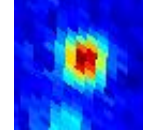
0.41±0.04 Jy

G085.72+26.08
J1824+568



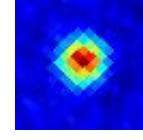
0.99±0.04 Jy

G085.76+83.34
J1310+323



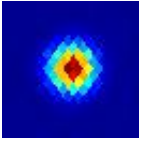
1.30±0.06 Jy

G085.95-18.77
J2203+317



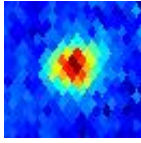
2.04±0.03 Jy

G086.12-38.18
J2253+161



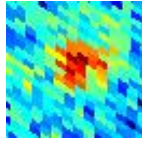
27.94±0.16 Jy

G086.63+40.34
J1638+573



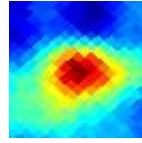
0.70±0.04 Jy

G086.89+80.79
J1317+344



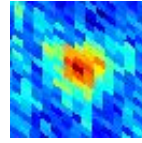
0.32±0.04 Jy E

G087.25+04.02
J2042+488



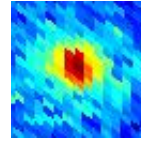
1.11±0.10 Jy E

G088.07+59.17
J1439+499



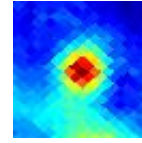
0.45±0.03 Jy

G088.24+44.71
J1604+572



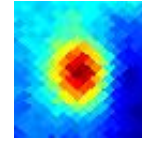
0.26±0.04 Jy E

G088.81+06.04
J2038+513



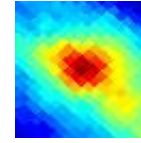
0.97±0.05 Jy

G089.36-00.67
J2112+474



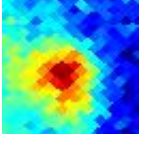
1.54±0.10 Jy

G089.62+02.16
J2100+495



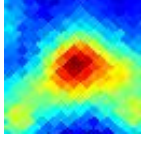
1.66±0.14 Jy E

G089.66-06.59
J2137+433



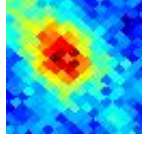
0.62±0.11 Jy E

G089.96-01.97
J2120+469



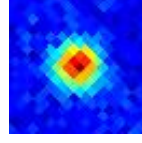
1.17±0.08 Jy E

G090.01-04.89
J2132+448



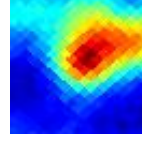
1.05±0.06 Jy E

G090.11-25.64
J2236+284



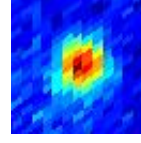
1.49±0.08 Jy

G090.52+02.29
J2103+502



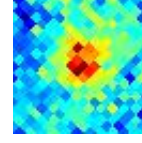
2.67±0.27 Jy E

G090.53+57.50
J1443+520



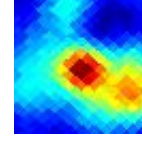
0.79±0.06 Jy

G090.95+24.83
J1840+612



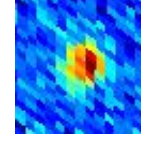
0.34±0.06 Jy E

G091.11+01.59
J2109+502



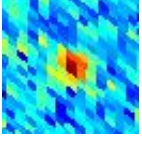
1.76±0.13 Jy

G091.16-47.95
J2327+096



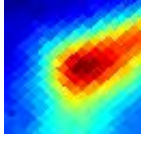
0.56±0.05 Jy

G091.89-50.53
J2334+076



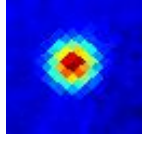
0.35±0.06 Jy

G092.27+03.81
J2103+525



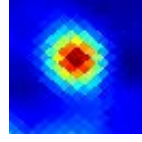
3.34±0.30 Jy E

G092.58-10.43
J2202+422



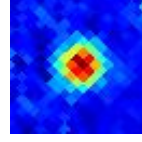
2.93±0.06 Jy

G092.67+03.07
J2109+523



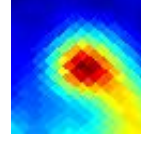
4.60±0.14 Jy

G092.73+19.45
J1927+613



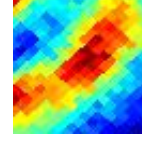
0.35±0.03 Jy

G093.12+02.85
J2112+525



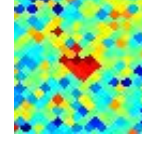
6.29±0.44 Jy

G093.22-04.58
J2144+472



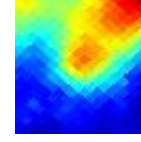
0.54±0.07 Jy E

G093.47-12.61
J2113+410



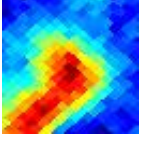
0.45±0.04 Jy E

G093.49+01.47
J2120+518



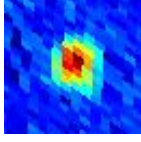
1.96±0.24 Jy E

G093.51-04.26
J2144+476



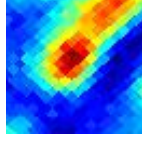
1.38±0.09 Jy E

G093.54-66.65
J0006-063



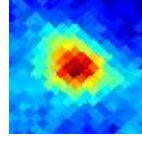
1.03±0.07 Jy

G093.74-04.63
J2147+475



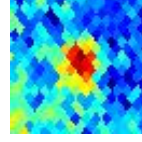
1.80±0.17 Jy

G093.89+10.01
J2037+577



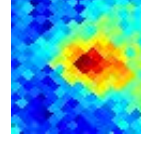
1.18±0.07 Jy

G094.05+37.91
J1646+635



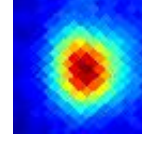
0.46±0.04 Jy E

G094.10+09.43
J2041+575



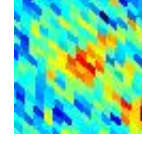
0.64±0.06 Jy E

G094.41-05.49
J2153+472



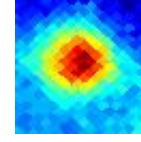
4.41±0.15 Jy E

G094.76-42.82
J2327+153



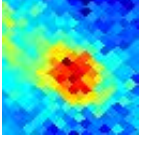
0.32±0.05 Jy

G095.14+06.49
J2103+564



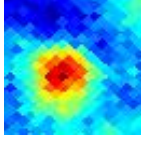
1.33±0.07 Jy E

G095.54+09.99
J2044+590



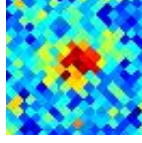
0.66±0.08 Jy E

G095.65+00.26
J2136+524



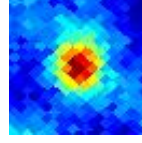
1.14±0.08 Jy

G095.89-23.99
J2253+325



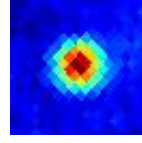
0.39±0.04 Jy

G096.28+02.60
J2128+546



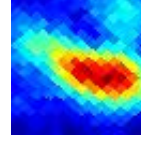
1.28±0.06 Jy

G096.46+29.94
J1758+666



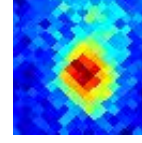
0.53±0.03 Jy

G096.53+01.34
J2135+538



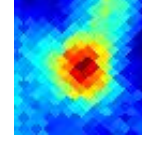
1.60±0.15 Jy E

G096.72-15.10
J2234+407



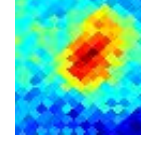
1.21±0.07 Jy

G097.20+09.88
J2053+602



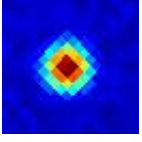
1.21±0.10 Jy E

G097.39+08.52
J2102+595



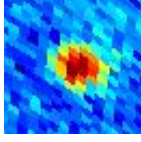
0.60±0.06 Jy E

G097.48+25.05
J1849+670



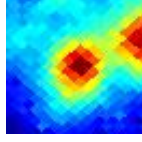
1.38±0.04 Jy

G097.51-87.96
J0047-252



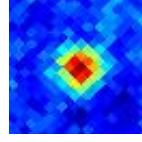
1.28±0.06 Jy

G097.53+03.17
J2132+558



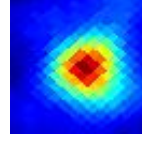
1.69±0.15 Jy

G097.65+16.74
J2006+644



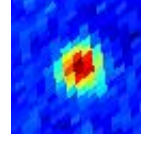
0.36±0.07 Jy

G098.02+01.45
J2142+549



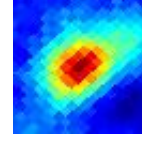
5.36±0.19 Jy

G098.30+58.31
J1419+543



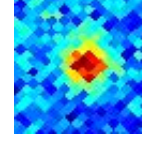
1.10±0.04 Jy

G098.33+05.25
J2126+579



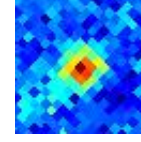
1.63±0.08 Jy E

G098.50-15.80
J2244+409



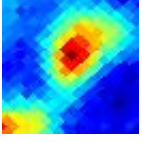
0.56±0.06 Jy

G098.53+25.86
J1842+681



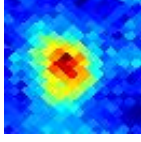
0.34±0.04 Jy E

G098.81+04.18
J2134+575



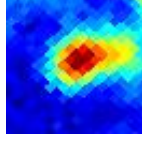
1.57±0.10 Jy E

G099.07+07.43
J2118+600



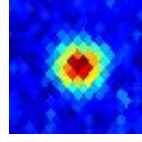
1.01±0.06 Jy E

G099.10+03.93
J2136+575



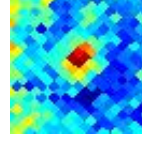
1.89±0.13 Jy

G099.27+33.76
J1716+686



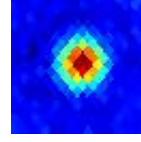
0.63±0.03 Jy

G099.29+17.41
J2007+661



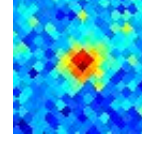
0.25±0.05 Jy E

G099.57+35.20
J1700+685



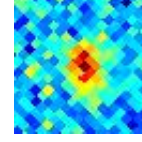
1.16±0.03 Jy

G099.69-31.25
J2321+275



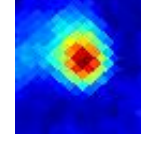
0.39±0.05 Jy

G099.91-20.45
J2301+374



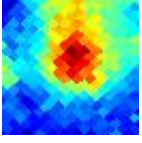
0.42±0.06 Jy

G099.99+04.17
J2140+582



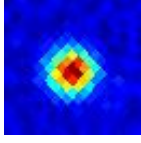
2.58±0.15 Jy

G100.04+08.86
J2114+616



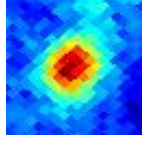
0.76±0.07 Jy E

G100.12+29.18
J1806+698



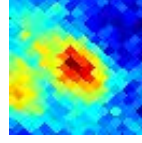
0.90±0.03 Jy

G100.18+02.03
J2152+567



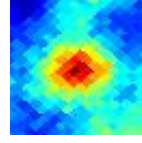
1.80±0.09 Jy E

G100.36-03.59
J2216+523



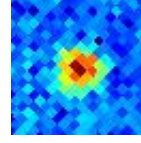
0.69±0.08 Jy E

G100.37+03.86
J2144+582



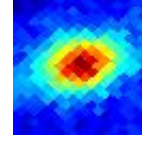
1.02±0.05 Jy

G100.42-24.01
J2311+344



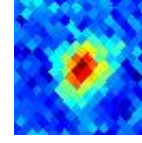
0.86±0.06 Jy

G100.42+08.81
J2117+619



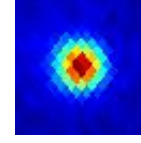
1.46±0.09 Jy E

G100.52+30.72
J1748+700



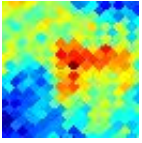
0.52±0.05 Jy E

G100.69+36.62
J1642+689



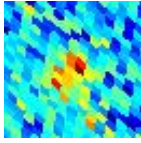
1.25±0.08 Jy

G100.99+02.57
J2154+576



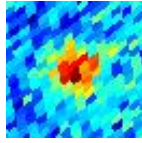
1.10±0.06 Jy

G101.18-66.65
J0017-052



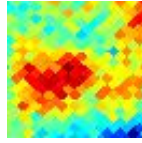
0.29±0.05 Jy

G101.30+80.63
J1308+357



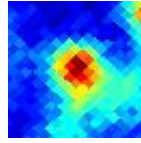
0.45±0.04 Jy

G101.44+02.66
J2156+580



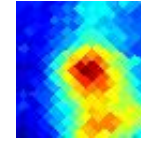
0.74±0.09 Jy E

G102.65+15.78
J2039+680



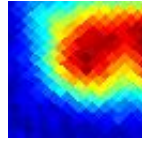
0.59±0.06 Jy

G102.72+15.37
J2043+678



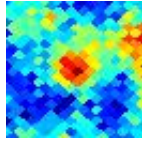
0.61±0.05 Jy E

G103.03-00.72
J2220+562



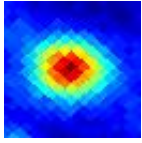
2.91±0.36 Jy E

G103.12+02.05
J2209+585



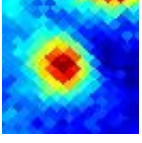
0.63±0.11 Jy E

G103.70+02.17
J2212+589



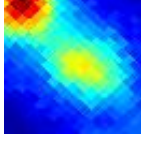
3.45±0.12 Jy

G103.86+01.85
J2215+588



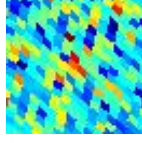
1.14±0.10 Jy

G103.90+13.97
J2102+679



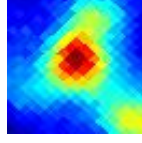
0.57±0.11 Jy

G103.95-61.82
J0016-002



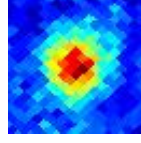
0.33±0.06 Jy

G104.08+14.16
J2101+681



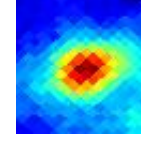
1.83±0.09 Jy E

G104.45+08.36
J2145+643



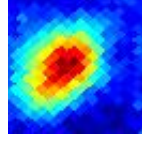
0.61±0.08 Jy E

G104.57+01.37
J2221+588



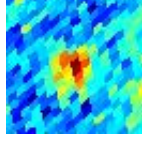
2.07±0.14 Jy

G104.71+02.80
J2216+600



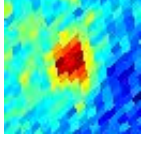
1.69±0.11 Jy E

G104.84+61.37
J1349+536



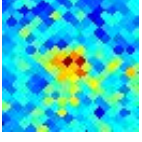
0.41±0.05 Jy

G105.17+49.71
J1436+636



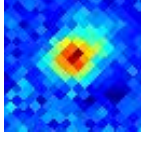
0.37±0.04 Jy E

G105.32-13.69
J2311+457



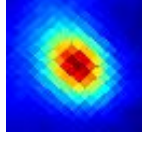
0.36±0.06 Jy E

G105.35+20.17
J2009+724



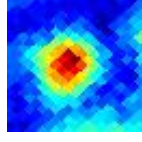
0.49±0.04 Jy

G105.41+09.86
J2143+661



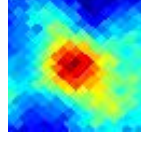
3.60±0.10 Jy

G105.48+03.34
J2219+609



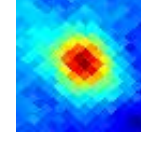
1.16±0.09 Jy

G105.55+10.40
J2140+665



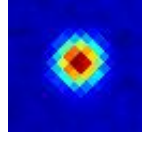
0.59±0.10 Jy E

G105.62+00.34
J2232+584



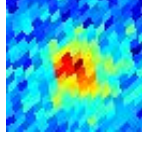
2.35±0.12 Jy

G105.63+23.54
J1927+739



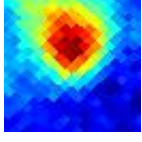
2.42±0.04 Jy

G105.80+61.76
J1345+535



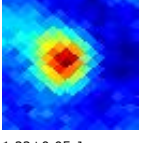
0.27±0.05 Jy

G106.32+13.53
J2123+693



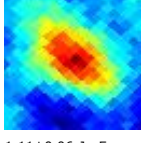
0.60±0.06 Jy E

G106.44+03.10
J2226+612



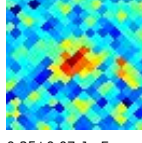
1.22±0.05 Jy

G106.50+06.90
J2208+644



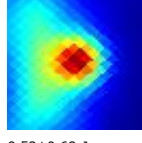
1.11±0.06 Jy E

G106.55-17.59
J2325+425



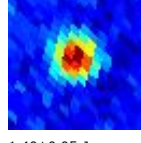
0.35±0.07 Jy E

G106.82+05.31
J2219+633



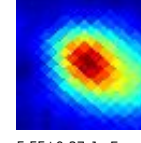
9.53±0.68 Jy

G106.96-50.63
J0010+109



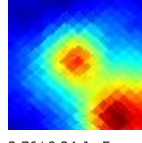
1.40±0.05 Jy

G107.20-00.94
J2247+581



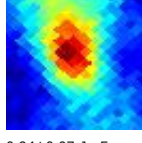
5.55±0.27 Jy E

G107.29+05.64
J2221+638



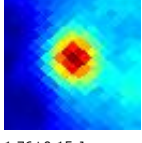
2.76±0.24 Jy E

G107.30+07.43
J2212+653



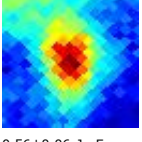
0.94±0.07 Jy E

G107.51+04.46
J2228+629



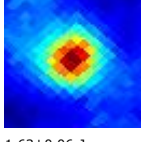
1.76±0.15 Jy

G108.10+13.18
J2140+703



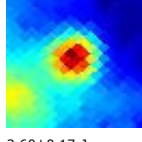
0.56±0.06 Jy E

G108.18+05.53
J2228+642



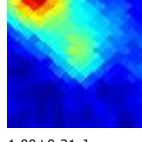
1.63±0.06 Jy

G108.20+00.57
J2249+599



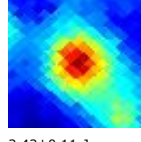
2.60±0.17 Jy

G108.22-01.27
J2256+582



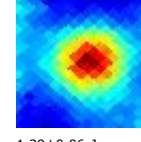
1.00±0.21 Jy

G108.36-01.04
J2256+585



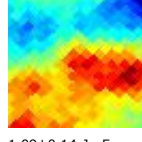
2.42±0.11 Jy

G108.55+06.03
J2229+648



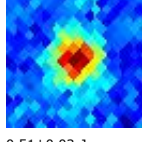
1.29±0.06 Jy

G108.60+00.50
J2252+600



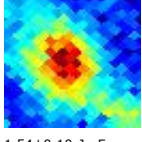
1.09±0.14 Jy E

G108.67+31.28
J1723+768



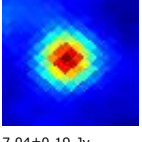
0.51±0.03 Jy

G108.69-02.61
J2303+572



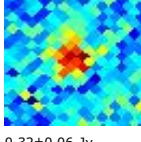
1.54±0.10 Jy E

G108.74-00.94
J2258+587



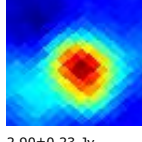
7.04±0.19 Jy

G108.93-09.46
J2322+509



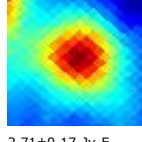
0.32±0.06 Jy

G108.96+02.72
J2247+621



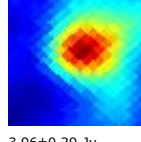
2.90±0.23 Jy

G109.04+06.25
J2232+653



2.71±0.17 Jy E

G109.06-00.34
J2258+594



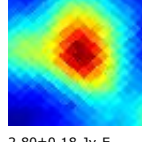
3.96±0.29 Jy

G109.29+21.12
J2022+761



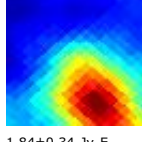
0.55±0.05 Jy

G109.38+06.48
J2233+656



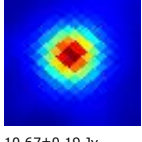
2.80±0.18 Jy E

G109.81+02.70
J2253+625



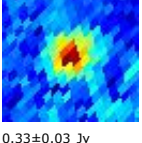
1.84±0.34 Jy E

G109.87+02.10
J2256+620



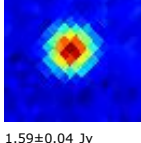
10.67±0.19 Jy

G109.97+42.10
J1459+716



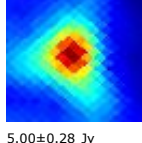
0.33±0.03 Jy

G110.02+29.05
J1800+784



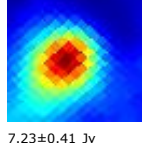
1.59±0.04 Jy

G110.10+00.05
J2305+602



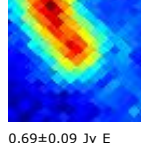
5.00±0.28 Jy

G110.21+02.58
J2257+626



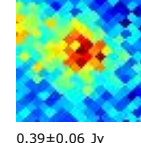
7.23±0.41 Jy

G110.32+11.36
J2213+702



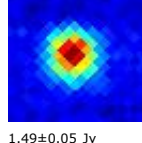
0.69±0.09 Jy E

G110.35-12.64
J2336+483



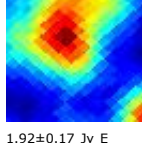
0.39±0.06 Jy

G110.45+22.73
J2005+778



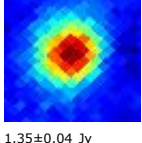
1.49±0.05 Jy

G110.49+01.50
J2303+617



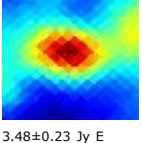
1.92±0.17 Jy E

G110.67+09.65
J2228+690



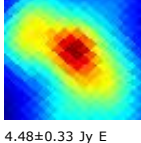
1.35±0.04 Jy

G111.08+02.09
J2305+625



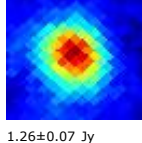
3.48±0.23 Jy E

G111.28-00.67
J2316+600



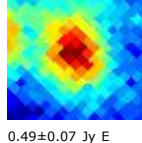
4.48±0.33 Jy E

G111.29+09.43
J2235+691



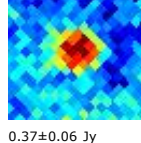
1.26±0.07 Jy

G111.40+19.73
J2101+771



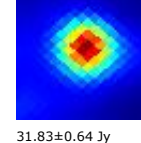
0.49±0.07 Jy E

G111.44+27.07
J1842+797



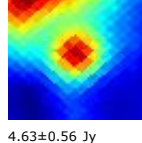
0.37±0.06 Jy

G111.54+00.78
J2313+614



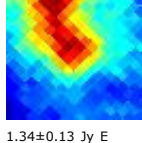
31.83±0.64 Jy

G111.61+00.38
J2315+611



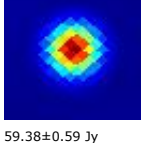
4.63±0.56 Jy

G111.66+20.21
J2057+775

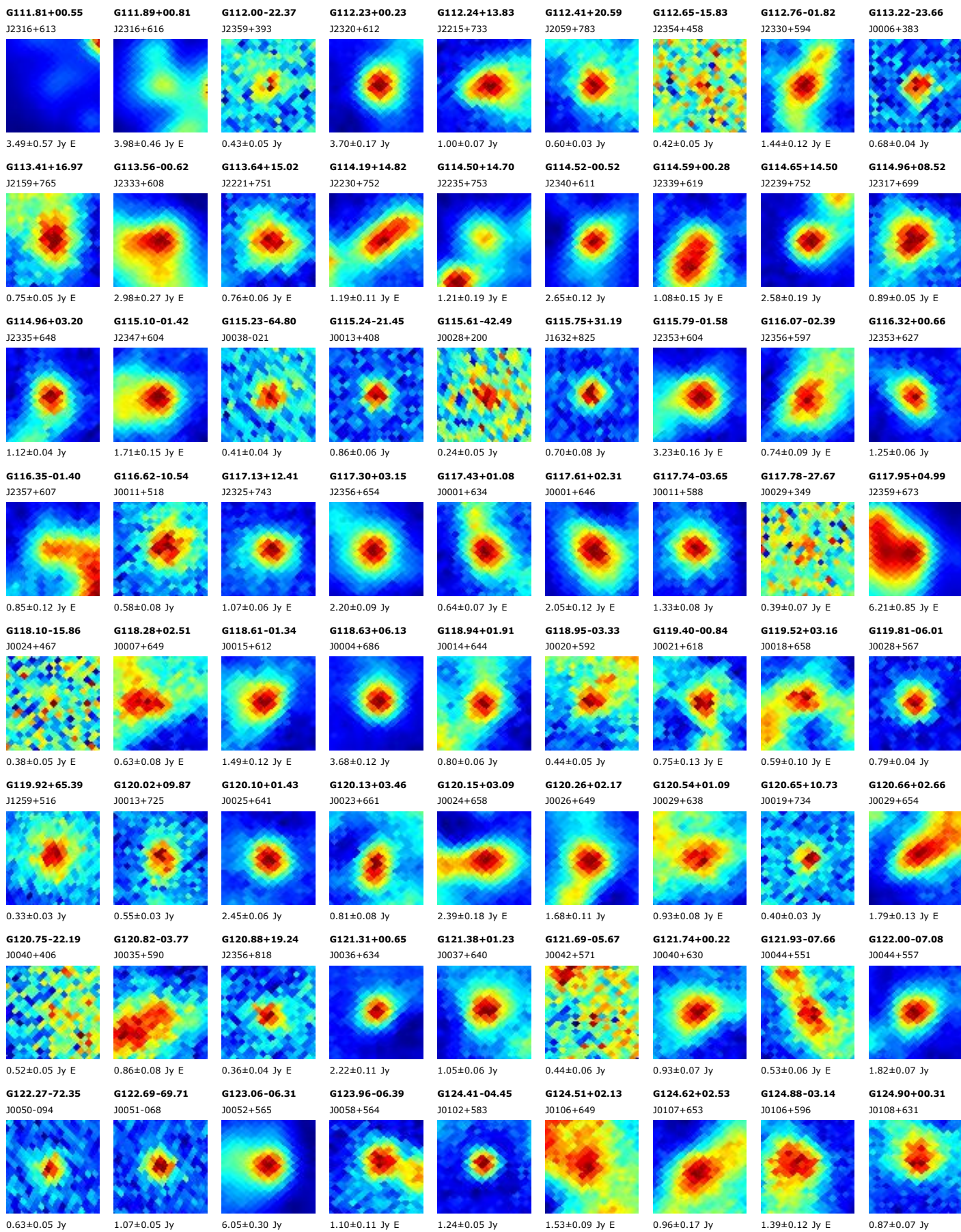


1.34±0.13 Jy E

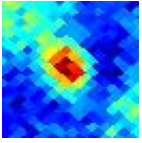
G111.74-02.13
J2323+588



59.38±0.59 Jy

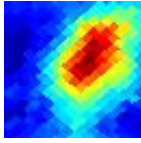


G125.09-01.24
J0109+615



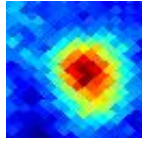
0.59±0.11 Jy

G125.66+02.01
J0117+647



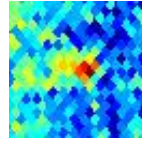
1.26±0.12 Jy E

G125.69-00.55
J0115+621



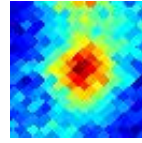
1.42±0.07 Jy E

G125.75+35.83
J1152+809



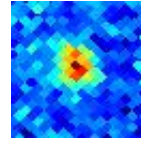
0.37±0.07 Jy E

G125.83+07.36
J0125+700



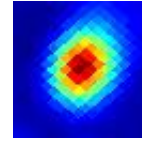
0.44±0.10 Jy

G126.57-12.91
J0113+497



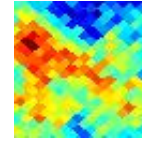
0.47±0.04 Jy

G126.68-00.80
J0123+618



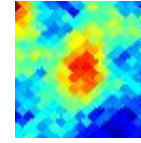
9.91±0.30 Jy E

G126.72+06.16
J0133+687



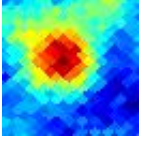
0.45±0.07 Jy E

G127.23+00.94
J0130+634



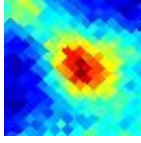
1.03±0.06 Jy E

G127.34+03.52
J0135+660



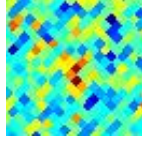
0.65±0.07 Jy

G127.66+13.95
J0209+761



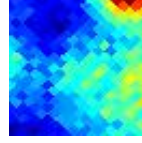
0.86±0.12 Jy E

G127.68-27.27
J0112+354



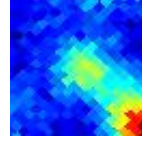
0.35±0.06 Jy E

G127.79+13.69
J0210+758



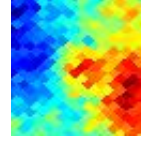
0.42±0.08 Jy E

G127.86+14.17
J0213+762



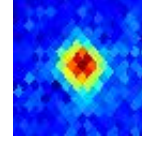
0.48±0.06 Jy E

G127.88+02.66
J0138+650



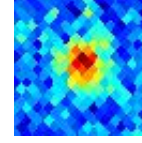
0.70±0.11 Jy

G127.97+34.74
J1058+812



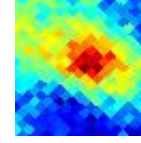
0.56±0.04 Jy

G128.18-30.53
J0112+321



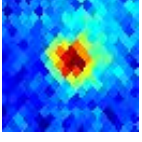
0.74±0.04 Jy

G128.21+13.70
J0216+757



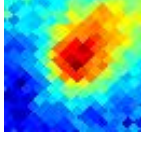
0.30±0.07 Jy

G128.73+34.73
J1044+809



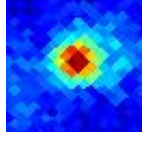
0.52±0.03 Jy

G128.86+13.69
J0225+754



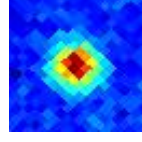
0.88±0.12 Jy E

G128.92+11.96
J0217+738



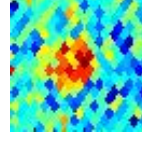
1.05±0.06 Jy

G129.09-13.40
J0128+490



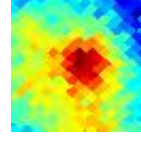
1.11±0.06 Jy

G129.13-39.86
J0112+227



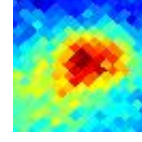
0.34±0.05 Jy

G129.19+00.61
J0146+628



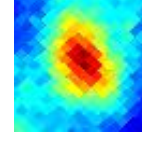
0.67±0.06 Jy

G129.94+13.81
J0241+751



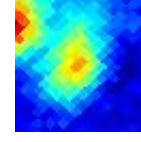
0.70±0.05 Jy E

G130.10+11.61
J0230+730



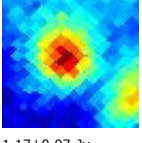
1.51±0.11 Jy E

G130.11+11.12
J0228+726



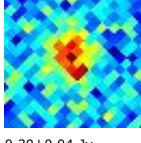
0.65±0.11 Jy E

G130.35+11.25
J0232+726



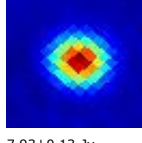
1.17±0.07 Jy

G130.42+20.08
J0354+801



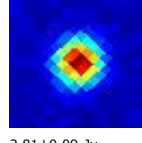
0.30±0.04 Jy

G130.72+03.09
J0205+648



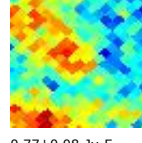
7.93±0.13 Jy

G130.79-14.30
J0137+478



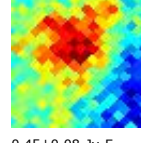
2.81±0.09 Jy

G131.46+04.57
J0216+660



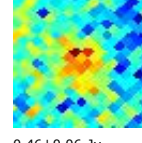
0.77±0.08 Jy E

G131.75-08.36
J0150+534



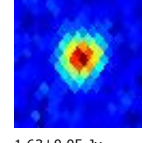
0.45±0.08 Jy E

G131.81-08.91
J0150+529



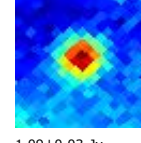
0.46±0.06 Jy

G131.82-60.99
J0108+015



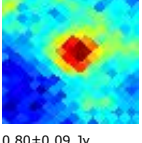
1.63±0.05 Jy

G132.11+06.22
J0228+673



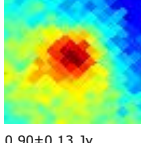
1.09±0.03 Jy

G132.17-00.72
J0208+607



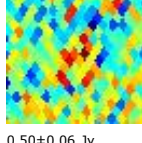
0.80±0.09 Jy

G132.31+09.35
J0244+701



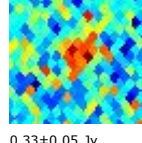
0.90±0.13 Jy

G132.38-48.07
J0117+143



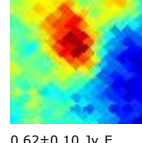
0.50±0.06 Jy

G132.75-36.20
J0126+259



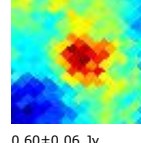
0.33±0.05 Jy

G132.86+08.90
J0247+695



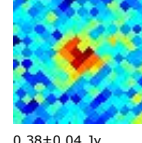
0.62±0.10 Jy E

G132.95+08.49
J0246+690



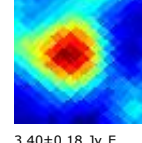
0.60±0.06 Jy

G133.39+18.33
J0410+769



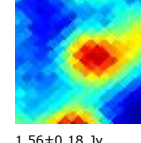
0.38±0.04 Jy

G133.42+00.10
J0220+611



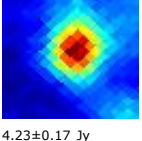
3.40±0.18 Jy E

G133.42+00.41
J0221+614



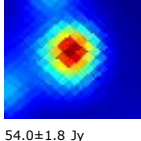
1.56±0.18 Jy

G133.48+09.03
J0254+693



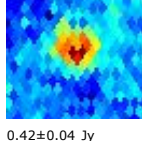
4.23±0.17 Jy

G133.71+01.21
J0225+621



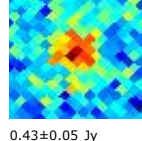
54.0±1.8 Jy

G133.76+42.31
J1101+724



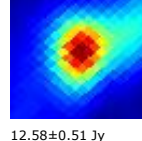
0.42±0.04 Jy

G133.85-13.80
J0154+477



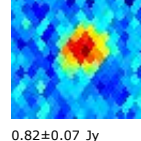
0.43±0.05 Jy

G134.21+00.75
J0228+614



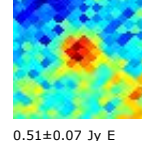
12.58±0.51 Jy

G134.60-50.35
J0121+118



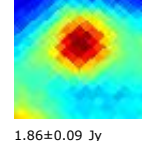
0.82±0.07 Jy

G134.72+08.57
J0304+683



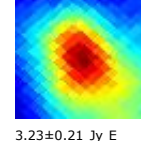
0.51±0.07 Jy E

G134.83+01.34
J0234+618



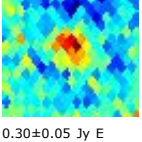
1.86±0.09 Jy

G135.25+01.04
J0237+613



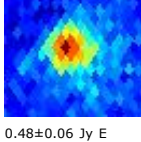
3.23±0.21 Jy E

G135.36+55.33
J1154+603



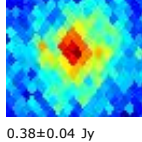
0.30±0.05 Jy E

G135.41+42.28
J1048+717



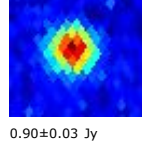
0.48±0.06 Jy E

G135.78+61.34
J1208+547



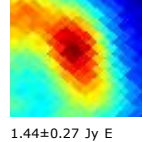
0.38±0.04 Jy

G135.93+43.92
J1057+702



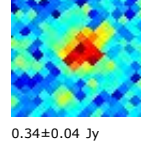
0.90±0.03 Jy

G136.33+01.09
J0245+609



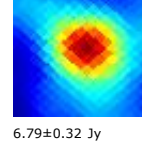
1.44±0.27 Jy E

G136.82-18.83
J0202+421



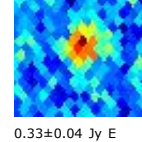
0.34±0.04 Jy

G136.90+01.09
J0249+607



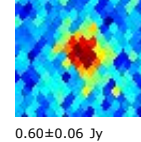
6.79±0.32 Jy

G137.18+67.72
J1219+484



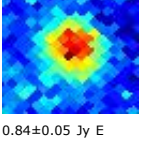
0.33±0.04 Jy E

G137.24-57.63
J0121+043



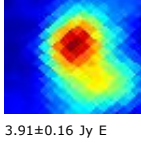
0.60±0.06 Jy

G137.28-09.72
J0221+506



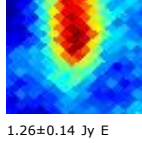
0.84±0.05 Jy E

G137.71+01.47
J0257+606



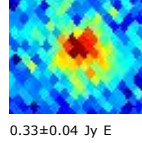
3.91±0.16 Jy E

G137.97+00.81
J0256+599



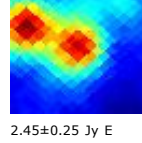
1.26±0.14 Jy E

G137.99+74.85
J1230+416



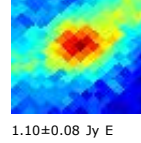
0.33±0.04 Jy E

G138.31+01.56
J0301+604



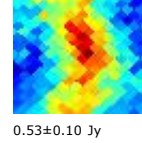
2.45±0.25 Jy E

G139.11-03.24
J0250+558



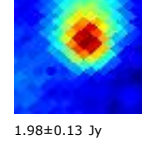
1.10±0.08 Jy E

G139.28-01.89
J0255+569



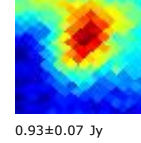
0.53±0.10 Jy

G139.92+00.19
J0307+585

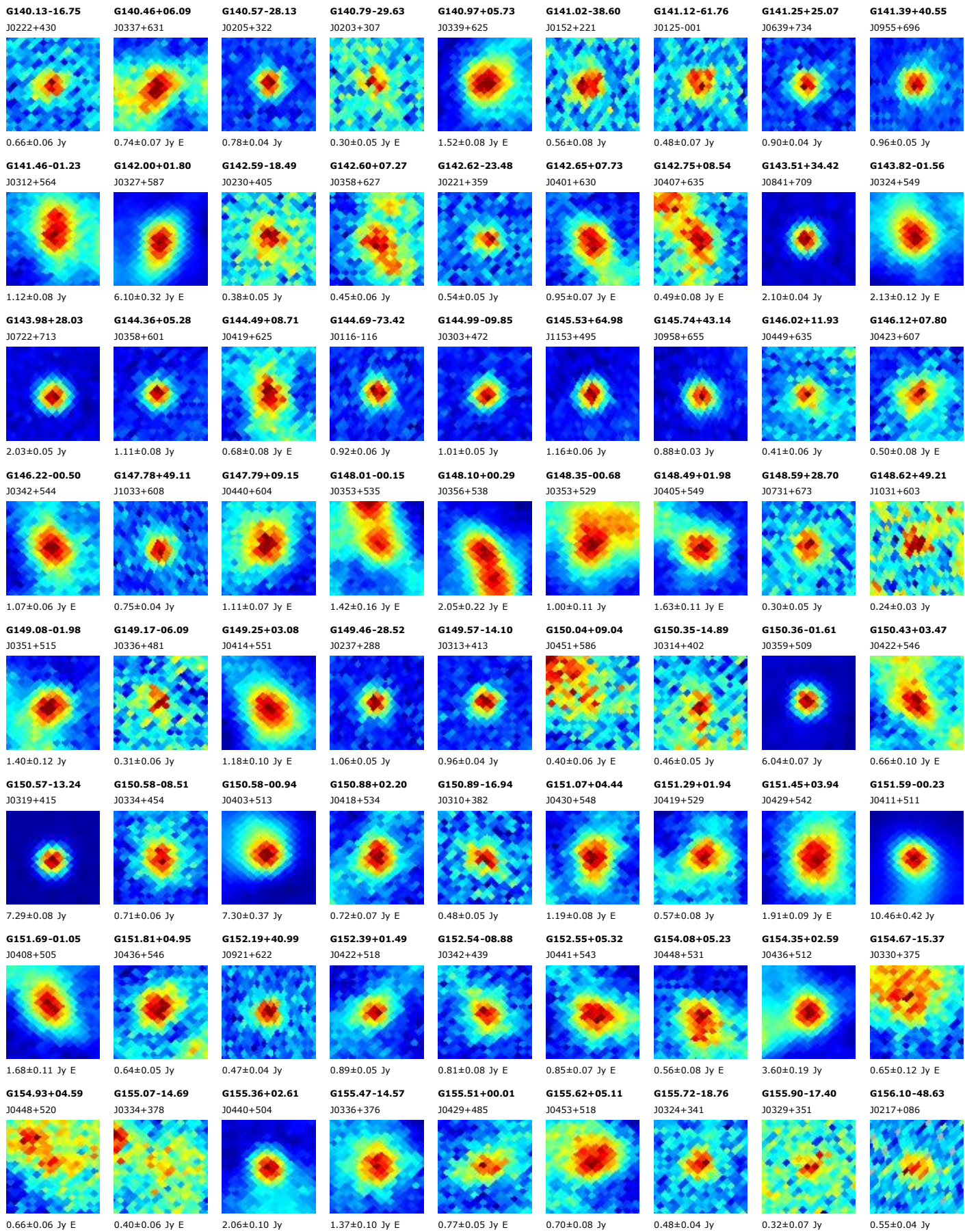


1.98±0.13 Jy

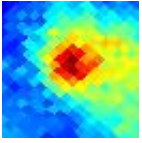
G139.98+02.07
J0315+600



0.93±0.07 Jy

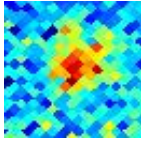


G156.19+05.25
J0456+515



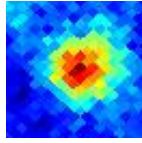
1.10±0.09 Jy

G156.28+13.09
J0541+558



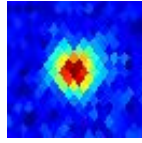
0.37±0.06 Jy E

G156.63-01.59
J0427+466



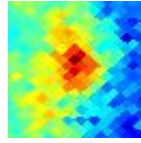
1.18±0.07 Jy

G156.76-39.10
J0238+166



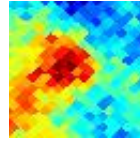
1.24±0.05 Jy

G156.89-02.15
J0425+460



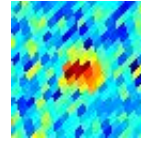
0.65±0.06 Jy E

G156.90-08.52
J0401+414



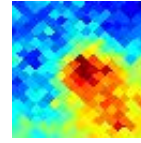
0.65±0.14 Jy E

G157.09-42.74
J0231+133



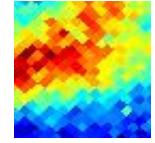
0.32±0.06 Jy

G157.14-11.58
J0352+390



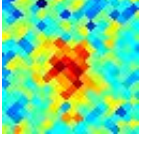
0.52±0.09 Jy E

G157.19-08.84
J0401+410



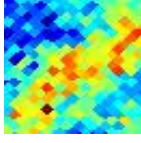
0.96±0.08 Jy E

G157.41+18.11
J0617+570



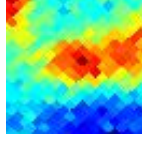
0.37±0.06 Jy

G157.49-04.05
J0420+443



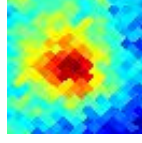
0.75±0.07 Jy E

G157.59-08.89
J0402+407



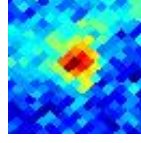
0.74±0.09 Jy E

G157.60-12.17
J0351+382



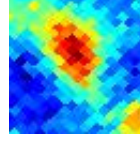
0.71±0.05 Jy E

G157.64+00.54
J0440+473



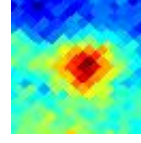
0.68±0.06 Jy E

G157.83-08.68
J0404+407



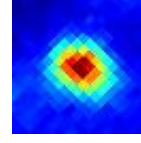
0.83±0.07 Jy E

G157.95-08.24
J0406+409



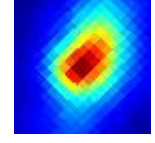
1.00±0.07 Jy E

G158.03-21.41
J0325+307



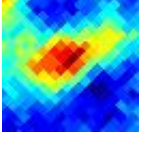
4.34±0.14 Jy

G158.35-20.55
J0329+312



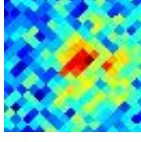
10.42±0.45 Jy E

G158.41-21.88
J0325+301



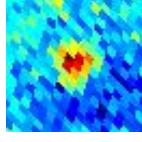
0.86±0.15 Jy E

G158.47+20.79
J0638+570



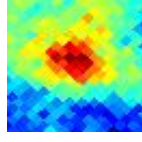
0.24±0.05 Jy

G158.59+47.93
J0957+553



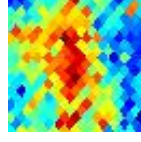
0.50±0.05 Jy

G158.70-12.48
J0354+373



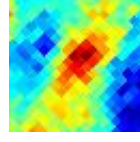
0.79±0.06 Jy E

G158.74-33.37
J0257+206



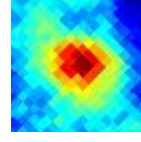
1.10±0.09 Jy E

G158.76-21.18
J0328+305



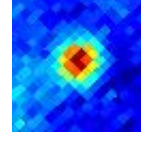
0.74±0.09 Jy E

G158.76-21.58
J0327+302



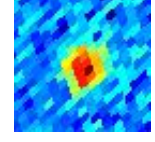
1.99±0.11 Jy E

G158.99-18.77
J0336+323



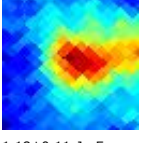
1.16±0.05 Jy

G159.06-68.74
J0141-094



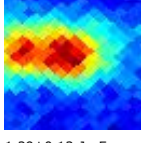
0.56±0.07 Jy

G159.09-08.47
J0410+400



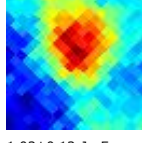
1.18±0.11 Jy E

G159.13+03.26
J0458+479



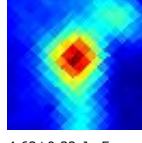
1.29±0.13 Jy E

G159.15-21.10
J0330+303



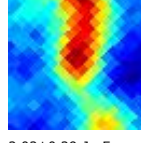
1.03±0.13 Jy E

G159.20-20.12
J0333+311



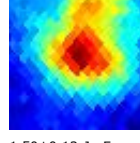
4.63±0.32 Jy E

G159.21-20.47
J0332+308



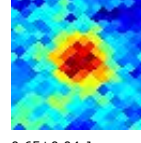
2.02±0.29 Jy E

G159.23-34.51
J0256+194



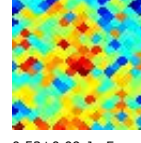
1.50±0.13 Jy E

G159.36+02.56
J0456+473



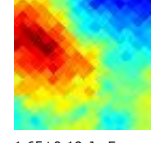
0.65±0.04 Jy

G159.37+03.77
J0501+481



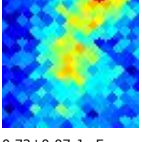
0.53±0.09 Jy E

G159.61-19.68
J0335+312



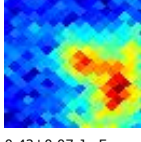
1.65±0.19 Jy E

G159.68-05.73
J0422+416



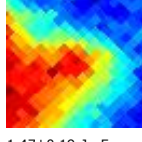
0.72±0.07 Jy E

G159.72-05.37
J0424+418



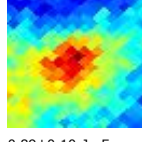
0.42±0.07 Jy E

G159.81-18.47
J0340+320



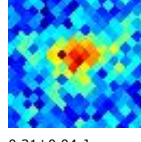
1.47±0.19 Jy E

G160.12+03.16
J0501+471



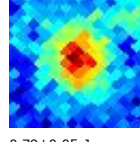
0.89±0.10 Jy E

G160.16+27.45
J0728+570



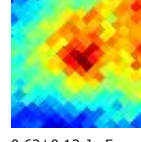
0.31±0.04 Jy

G160.27+00.85
J0451+455



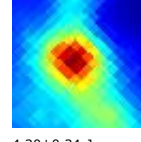
0.79±0.05 Jy

G160.36-19.09
J0340+312



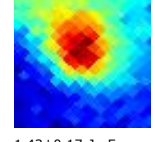
0.62±0.13 Jy E

G160.44-17.98
J0343+320



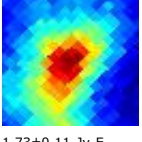
4.30±0.34 Jy

G160.50-09.82
J0410+381



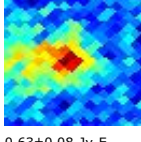
1.43±0.17 Jy E

G160.51-16.82
J0347+328



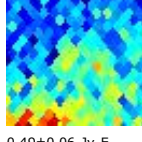
1.73±0.11 Jy E

G161.00+04.41
J0510+471



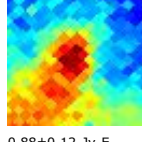
0.63±0.08 Jy E

G161.43-35.60
J0259+175



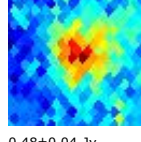
0.49±0.06 Jy E

G161.58-08.39
J0419+383



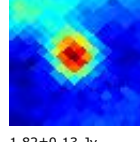
0.88±0.12 Jy E

G161.63-35.91
J0259+171



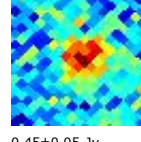
0.48±0.04 Jy

G161.66-08.82
J0418+380



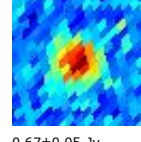
1.82±0.13 Jy

G161.69+10.30
J0542+498



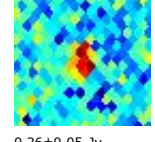
0.45±0.05 Jy

G161.83-43.29
J0242+110



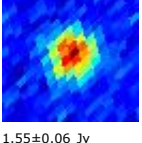
0.67±0.05 Jy

G161.95+35.11
J0824+558



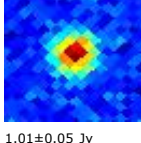
0.26±0.05 Jy

G162.14-54.41
J0217+017



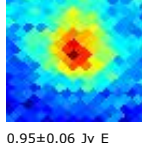
1.55±0.06 Jy

G162.16+08.22
J0533+483



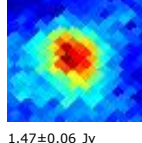
1.01±0.05 Jy

G162.30-02.30
J0445+419



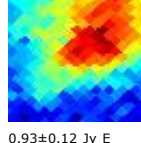
0.95±0.06 Jy E

G162.43-08.68
J0421+375



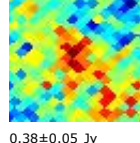
1.47±0.06 Jy

G162.77+01.35
J0502+439



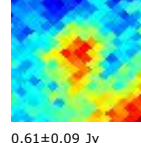
0.93±0.12 Jy E

G162.77-01.71
J0449+420



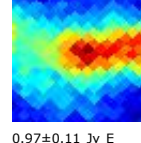
0.38±0.05 Jy

G162.88+01.75
J0504+440



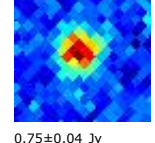
0.61±0.09 Jy

G163.36-08.41
J0425+371



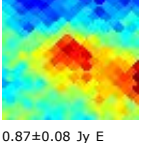
0.97±0.11 Jy E

G163.66-28.02
J0325+224



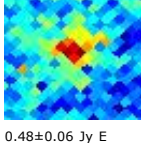
0.75±0.04 Jy

G163.66-08.31
J0427+369



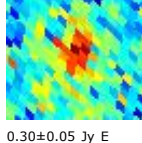
0.87±0.08 Jy E

G163.69+08.99
J0541+474



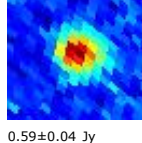
0.48±0.06 Jy E

G164.23+47.35
J0944+520



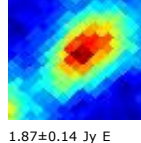
0.30±0.05 Jy E

G164.95+71.47
J1146+399



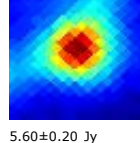
0.59±0.04 Jy

G164.96-08.54
J0430+358



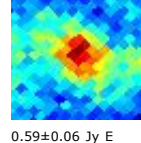
1.87±0.14 Jy E

G165.35-09.03
J0430+352



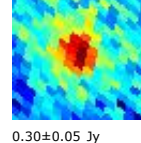
5.60±0.20 Jy

G165.36-07.50
J0435+362



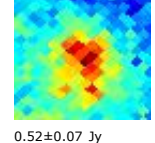
0.59±0.06 Jy E

G165.44+79.20
J1215+348



0.30±0.05 Jy

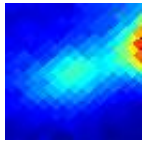
G165.61+03.35
J0520+428



0.52±0.07 Jy

G165.65-09.12

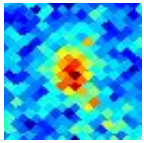
J0430+349



1.56±0.24 Jy E

G166.23+00.49

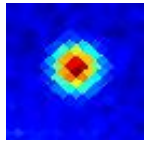
J0510+406



0.44±0.05 Jy E

G166.44-06.54

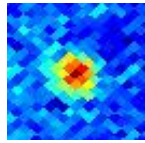
J0442+361



2.58±0.05 Jy

G166.50+00.92

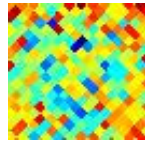
J0512+406



0.57±0.06 Jy

G166.67+23.86

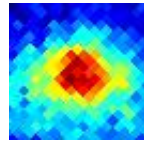
J0712+505



0.43±0.05 Jy

G166.68-23.94

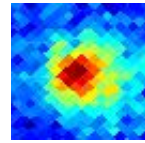
J0346+237



1.18±0.10 Jy E

G167.04+03.44

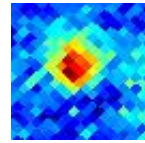
J0525+417



1.01±0.06 Jy E

G167.21-15.34

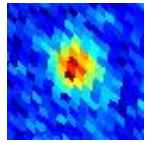
J0414+295



0.65±0.09 Jy

G167.36+46.66

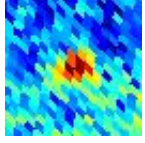
J0937+501



0.65±0.06 Jy

G167.65+45.41

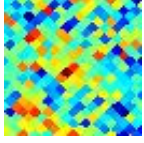
J0929+502



0.36±0.05 Jy E

G167.67+13.93

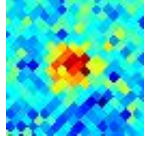
J0618+463



0.26±0.06 Jy E

G167.68+27.10

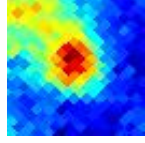
J0733+503



0.49±0.04 Jy

G167.99-15.74

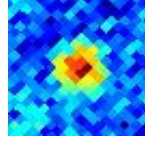
J0415+287



1.46±0.15 Jy E

G168.04-19.64

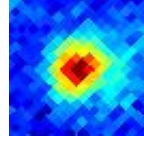
J0403+259



0.55±0.03 Jy

G168.06-19.14

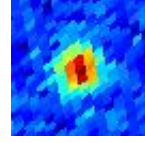
J0404+263



1.20±0.08 Jy

G168.14-76.01

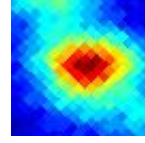
J0132-169



0.79±0.05 Jy

G168.17-16.40

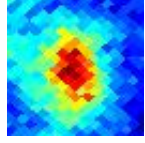
J0413+281



2.67±0.20 Jy E

G168.46-00.98

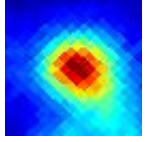
J0510+379



1.12±0.07 Jy E

G168.78-15.51

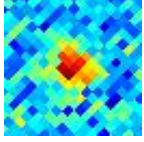
J0418+283



5.14±0.24 Jy E

G169.04-22.46

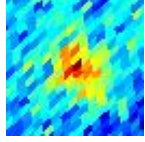
J0357+233



0.36±0.03 Jy

G169.12-43.28

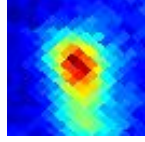
J0259+078



0.39±0.04 Jy

G169.17-00.94

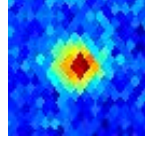
J0513+374



2.08±0.10 Jy

G169.18-39.71

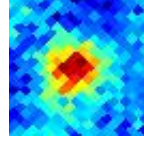
J0309+104



0.80±0.04 Jy

G169.18-14.88

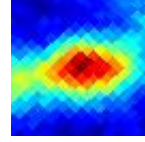
J0421+285



0.71±0.06 Jy

G169.28-16.15

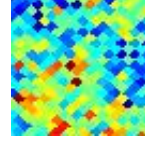
J0418+275



2.76±0.22 Jy E

G169.72-00.65

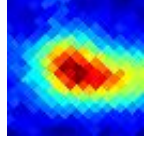
J0516+371



0.47±0.07 Jy E

G169.74-16.17

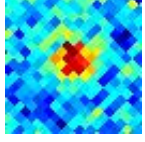
J0419+272



2.72±0.21 Jy E

G169.78+22.74

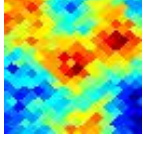
J0710+475



0.40±0.04 Jy

G169.84+01.95

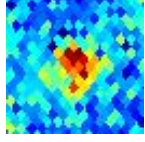
J0527+385



0.59±0.11 Jy E

G170.15+36.38

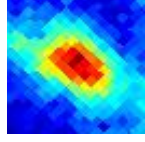
J0832+492



0.43±0.04 Jy

G170.18-16.04

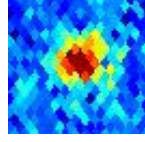
J0421+270



1.99±0.16 Jy E

G170.47+39.25

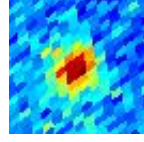
J0849+489



0.41±0.04 Jy

G170.54-85.81

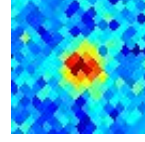
J0104-242



0.62±0.04 Jy

G170.55+30.14

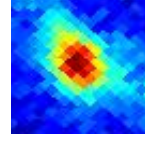
J0754+483



0.65±0.07 Jy

G170.65-00.25

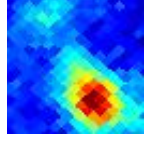
J0520+366



1.94±0.13 Jy E

G170.72-00.12

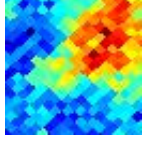
J0521+366



1.37±0.17 Jy E

G170.84-10.90

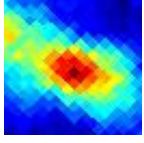
J0440+299



0.85±0.15 Jy E

G170.99-15.78

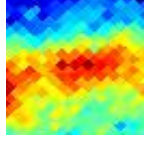
J0424+266



1.45±0.12 Jy E

G171.03+02.66

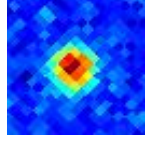
J0533+379



1.09±0.12 Jy E

G171.07+17.94

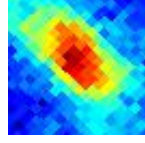
J0646+448



0.98±0.06 Jy

G171.15-17.57

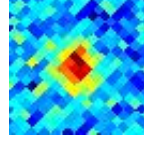
J0418+253



0.94±0.08 Jy E

G171.20+19.38

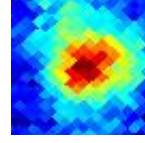
J0654+452



0.43±0.06 Jy

G171.33-10.67

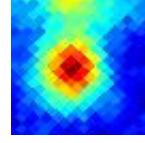
J0442+297



1.02±0.08 Jy E

G171.48-14.90

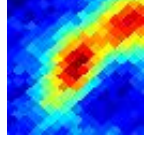
J0428+268



1.66±0.13 Jy

G171.54+02.42

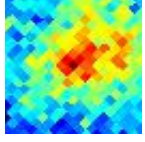
J0533+373



2.11±0.15 Jy E

G171.64-18.07

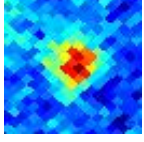
J0418+246



0.58±0.07 Jy E

G171.66+07.28

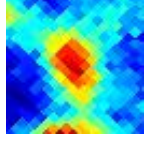
J0555+397



0.66±0.04 Jy

G171.79-15.36

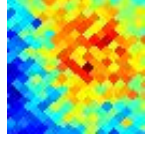
J0427+263



0.94±0.07 Jy

G171.80-08.45

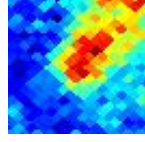
J0452+307



1.03±0.09 Jy E

G171.84-05.22

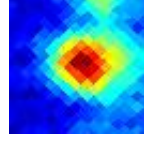
J0504+327



0.67±0.09 Jy E

G171.86-15.66

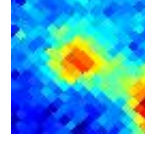
J0427+260



1.41±0.15 Jy

G172.08-15.19

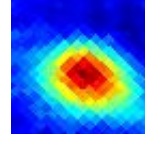
J0429+262



0.70±0.09 Jy

G172.12-16.92

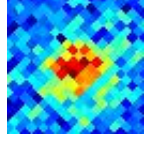
J0423+250



2.23±0.17 Jy E

G172.14+23.42

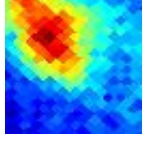
J0717+456



0.38±0.06 Jy E

G172.29-08.14

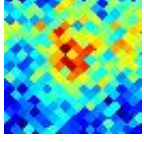
J0454+306



0.91±0.14 Jy E

G172.32-18.24

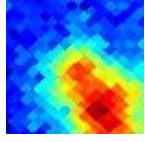
J0419+240



0.51±0.05 Jy

G172.47-07.89

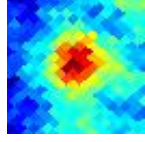
J0456+306



0.95±0.16 Jy E

G172.71-00.34

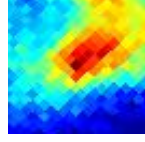
J0525+348



0.99±0.07 Jy

G172.85-14.74

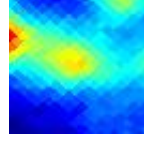
J0433+259



1.05±0.13 Jy E

G172.87+02.26

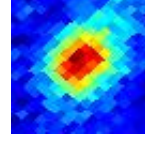
J0536+361



1.79±0.16 Jy E

G172.94-05.49

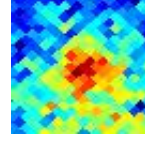
J0506+317



1.39±0.09 Jy E

G172.96+07.33

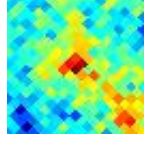
J0559+387



0.44±0.07 Jy E

G173.10-17.90

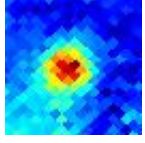
J0423+237



0.60±0.05 Jy

G173.14-01.29

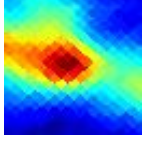
J0523+339



1.08±0.10 Jy

G173.14+02.35

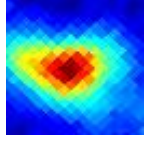
J0537+359



3.49±0.30 Jy E

G173.39-16.29

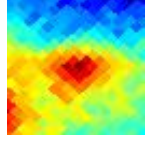
J0429+245



3.09±0.19 Jy E

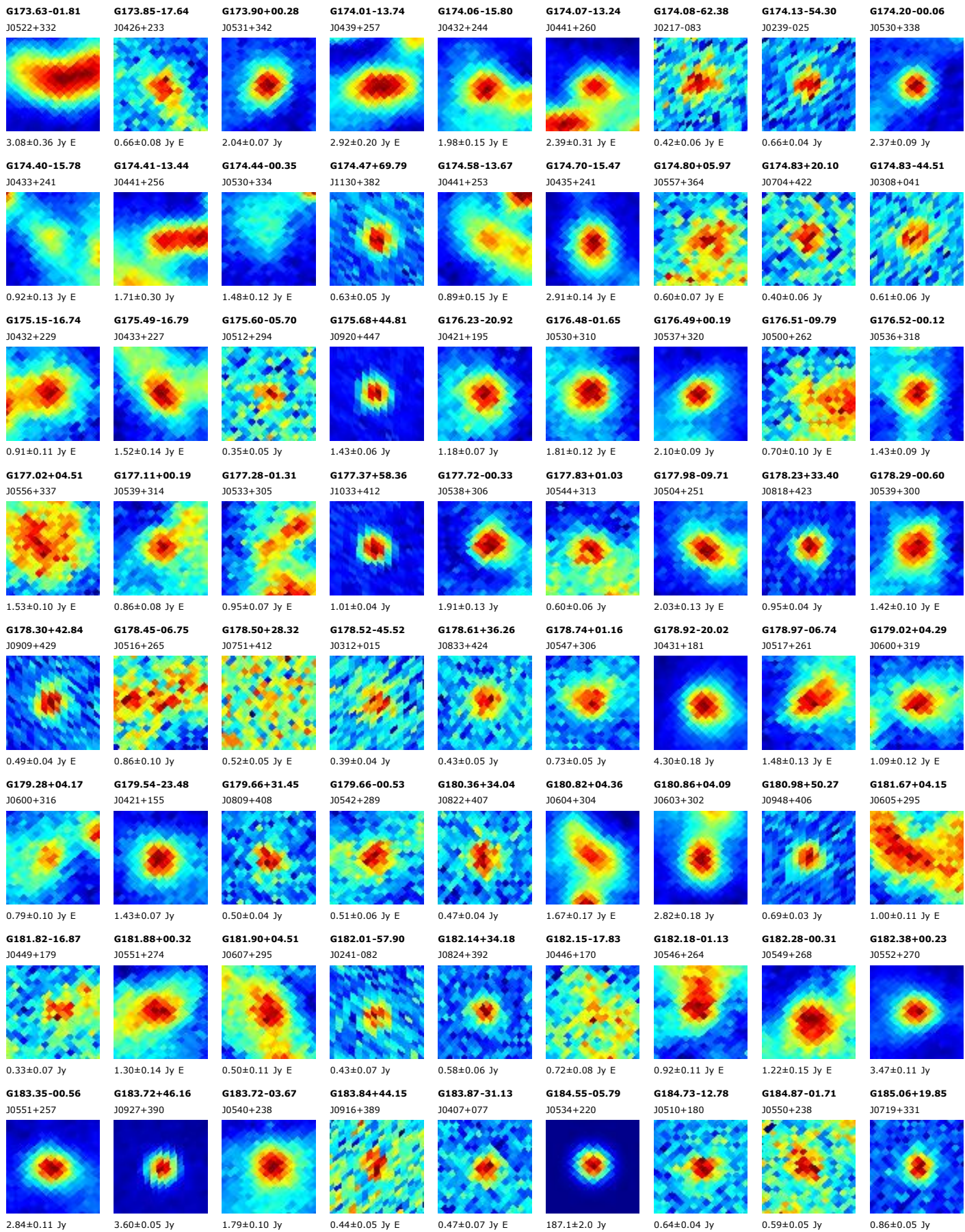
G173.42-13.34

J0439+264



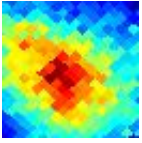
0.87±0.13 Jy E

G173.



G185.31-02.13

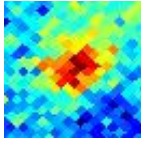
J0549+232



0.82±0.09 Jy E

G185.78-09.13

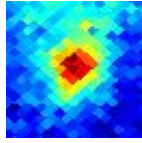
J0525+191



0.58±0.06 Jy E

G186.03+02.42

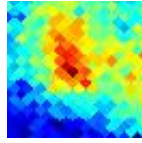
J0608+249



0.93±0.09 Jy E

G186.77-05.37

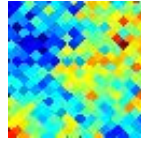
J0541+203



0.63±0.11 Jy E

G186.84-16.43

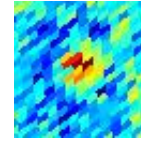
J0502+142



0.41±0.05 Jy E

G186.91+67.54

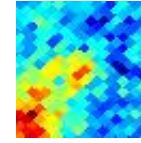
J1112+347



0.38±0.05 Jy

G186.94-03.82

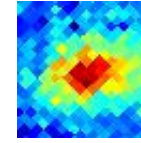
J0547+210



0.41±0.08 Jy E

G187.23-16.67

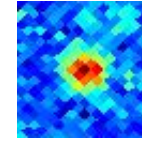
J0502+138



0.60±0.05 Jy E

G187.40-11.33

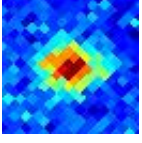
J0521+166



0.72±0.08 Jy

G187.41-20.72

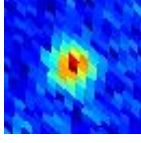
J0449+113



0.82±0.04 Jy

G187.98-42.45

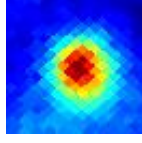
J0339-017



0.83±0.08 Jy

G188.55+03.65

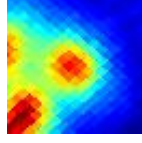
J0618+233



3.12±0.12 Jy

G188.78+01.04

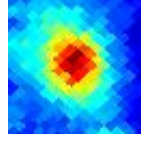
J0609+218



3.85±0.44 Jy

G188.88+04.46

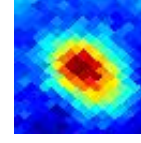
J0622+233



1.99±0.13 Jy E

G188.94-01.94

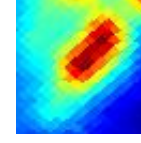
J0558+202



1.86±0.08 Jy E

G189.02+00.79

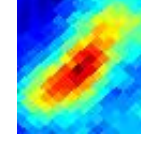
J0608+215



4.06±0.35 Jy E

G189.40+04.42

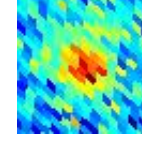
J0623+229



1.33±0.16 Jy E

G189.43-42.88

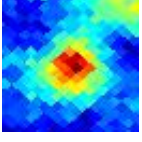
J0340-028



0.38±0.04 Jy

G189.46-01.23

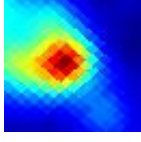
J0602+201



0.92±0.07 Jy

G189.77+00.34

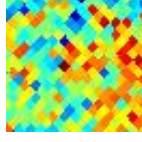
J0608+206



10.09±0.73 Jy

G189.89-28.72

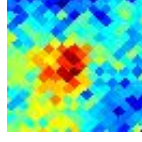
J0427+049



0.39±0.06 Jy E

G190.05-13.50

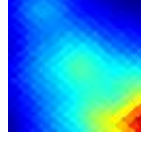
J0519+132



0.48±0.08 Jy

G190.05+00.54

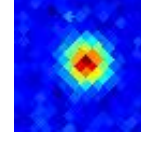
J0609+205



3.79±0.62 Jy E

G190.38-27.39

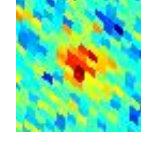
J0433+053



1.48±0.06 Jy

G190.52-69.14

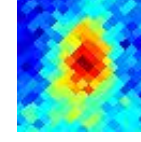
J0212-177



0.40±0.05 Jy E

G191.06-16.43

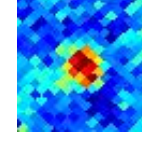
J0511+108



0.89±0.12 Jy E

G191.36-11.00

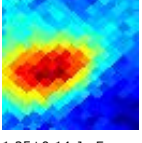
J0530+135



0.52±0.05 Jy

G191.49-00.74

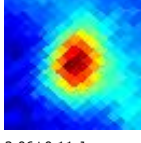
J0608+186



1.25±0.14 Jy E

G191.91+00.87

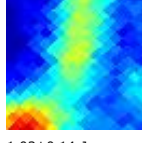
J0614+190



2.06±0.11 Jy

G192.16-11.11

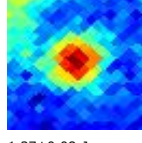
J0532+128



1.03±0.14 Jy

G192.17-03.81

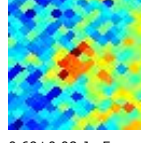
J0558+165



1.37±0.08 Jy

G192.21+03.60

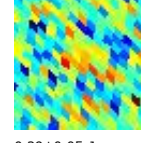
J0625+200



0.69±0.08 Jy E

G192.22-42.42

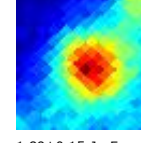
J0346-043



0.29±0.05 Jy

G192.35-11.32

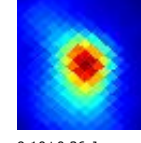
J0531+125



1.89±0.15 Jy E

G192.61-00.03

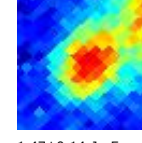
J0612+179



9.10±0.36 Jy

G192.64-11.62

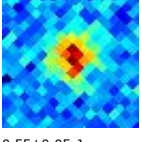
J0531+121



1.47±0.14 Jy E

G192.70-21.67

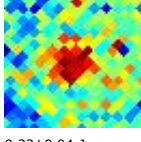
J0457+067



0.55±0.05 Jy

G192.80+23.55

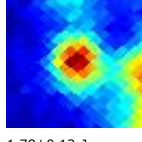
J0746+275



0.33±0.04 Jy

G192.99+00.14

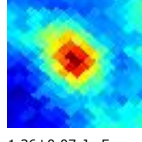
J0614+177



1.78±0.13 Jy

G193.45-01.16

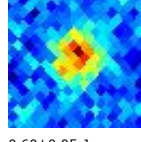
J0610+167



1.36±0.07 Jy E

G193.58-31.78

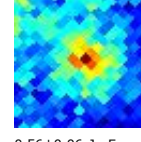
J0424+005



0.60±0.05 Jy

G193.94-15.92

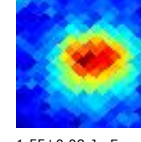
J0519+088



0.56±0.06 Jy E

G194.80-03.40

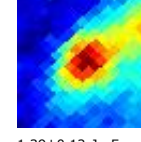
J0605+144



1.55±0.08 Jy E

G194.93-01.22

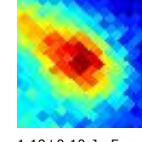
J0613+153



1.39±0.12 Jy E

G195.07-16.41

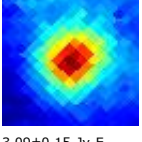
J0519+076



1.19±0.10 Jy E

G195.26-16.94

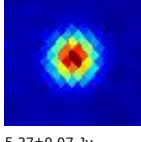
J0518+072



3.09±0.15 Jy E

G195.29-33.13

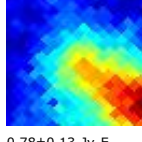
J0423-013



5.27±0.07 Jy

G195.32-16.25

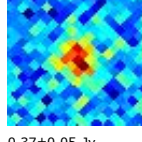
J0520+075



0.78±0.13 Jy E

G195.40-19.62

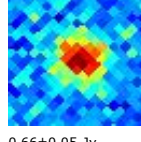
J0509+056



0.37±0.05 Jy

G195.49-20.85

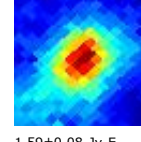
J0505+049



0.66±0.05 Jy

G195.67-00.10

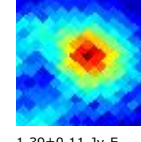
J0618+152



1.59±0.08 Jy E

G195.72-02.31

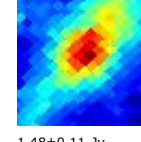
J0610+141



1.39±0.11 Jy E

G195.99-02.76

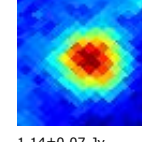
J0609+137



1.48±0.11 Jy

G196.23-01.20

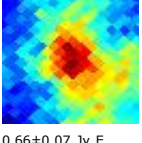
J0615+142



1.14±0.07 Jy

G196.31-02.30

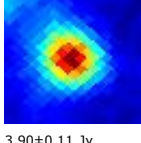
J0612+136



0.66±0.07 Jy E

G196.44-01.66

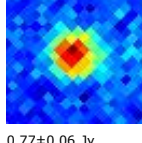
J0614+138



3.90±0.11 Jy

G196.60+22.71

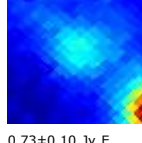
J0748+240



0.77±0.06 Jy

G196.71-01.48

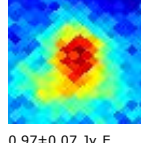
J0615+136



0.73±0.10 Jy E

G196.81-03.11

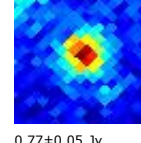
J0610+128



0.97±0.07 Jy E

G196.84-13.74

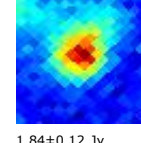
J0532+075



0.77±0.05 Jy

G196.91-10.37

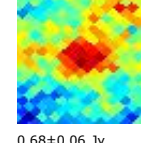
J0544+091



1.84±0.12 Jy

G196.96+00.62

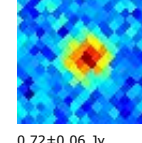
J0623+144



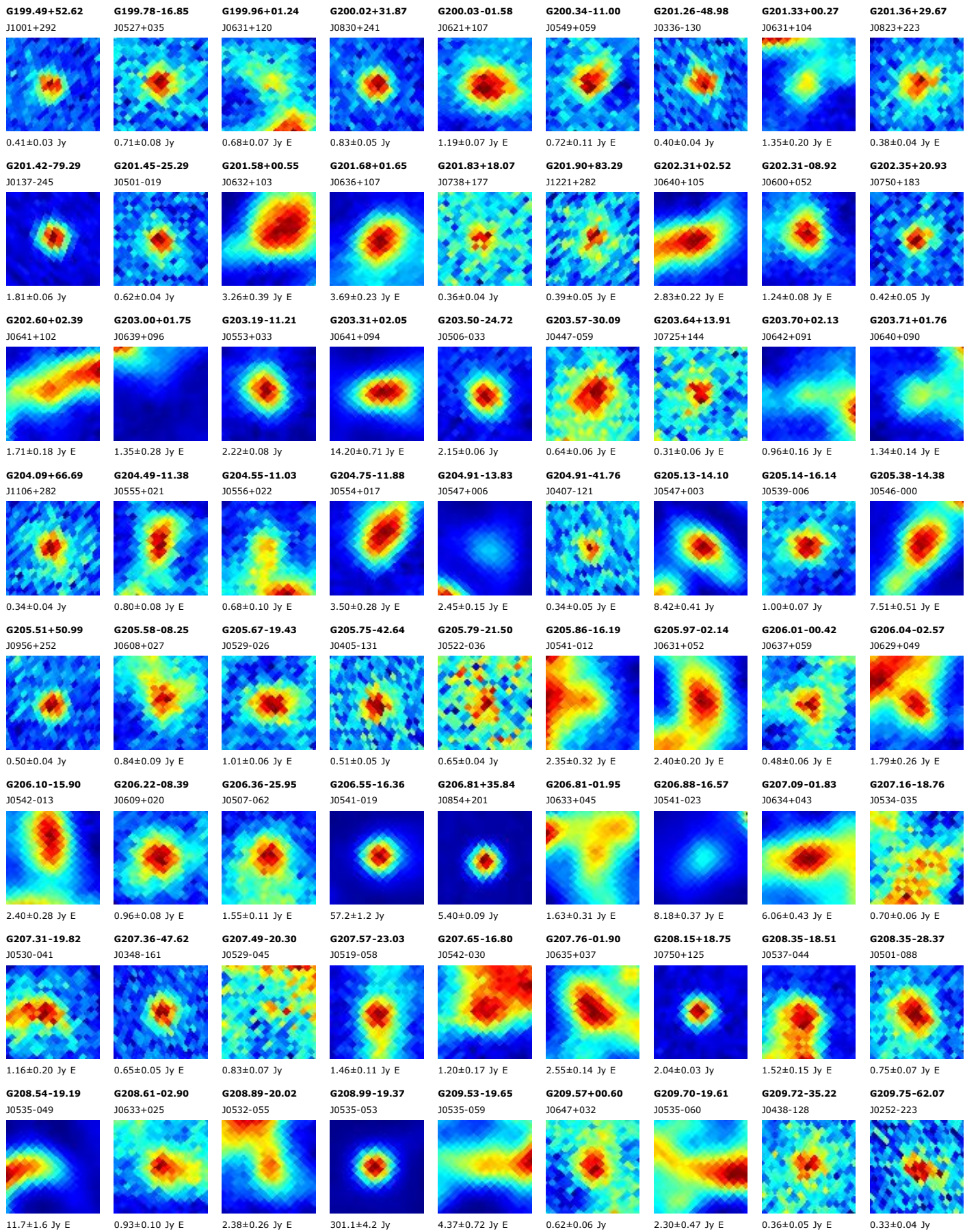
0.68±0.06 Jy

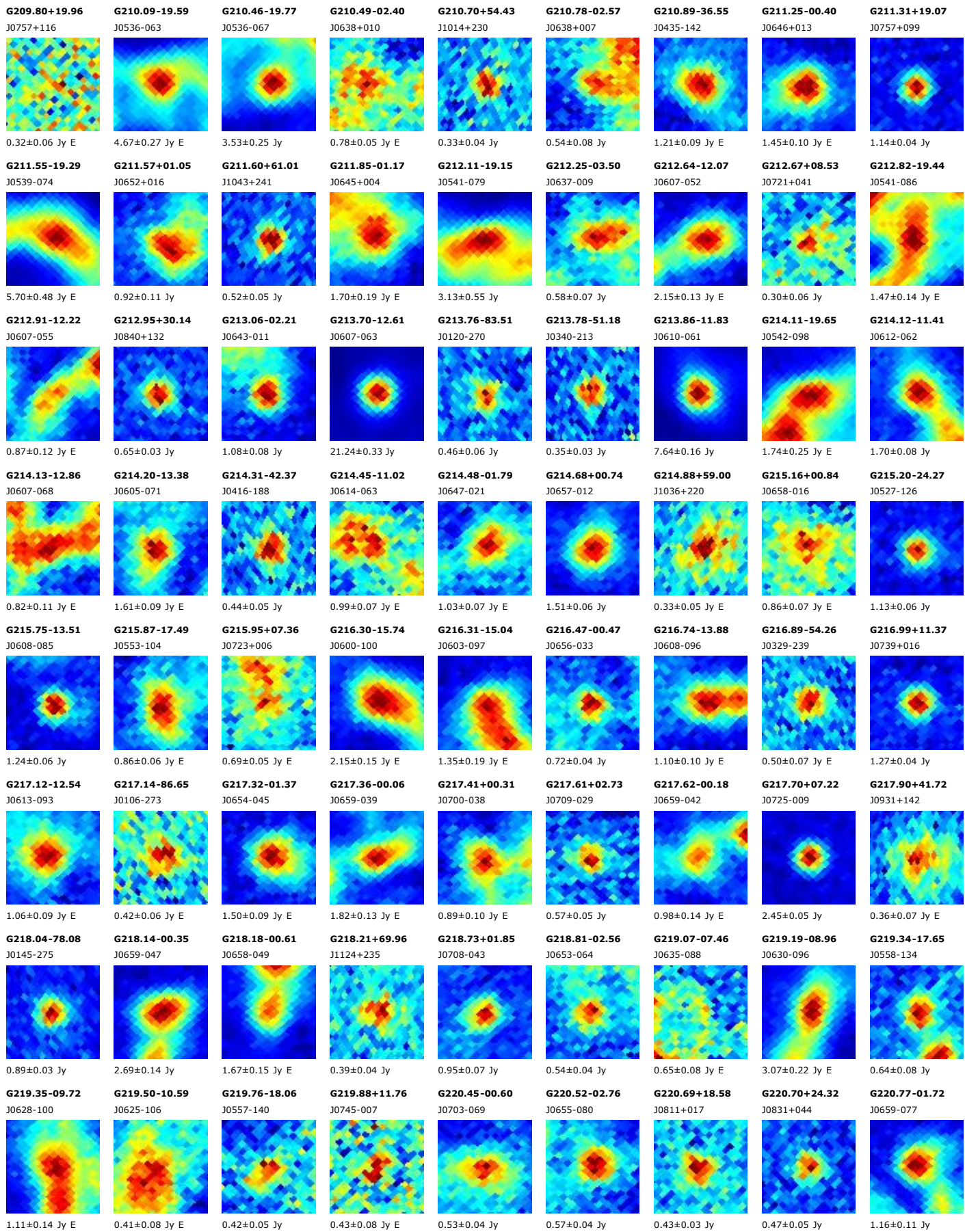
G197.20-28.45

J0442-002

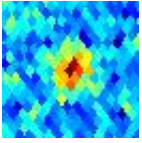


0.72±0.06 Jy



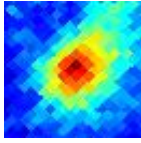


G220.83-49.62
J0352-252



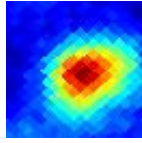
0.36±0.06 Jy

G220.94-08.32
J0636-108



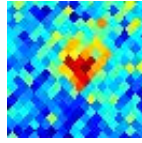
0.79±0.08 Jy E

G221.01-02.49
J0657-083



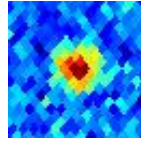
1.73±0.16 Jy E

G221.14+30.29
J0853+069



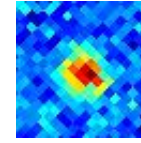
0.48±0.05 Jy E

G221.14+75.95
J1150+242



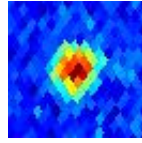
0.36±0.05 Jy

G221.22+22.40
J0825+031



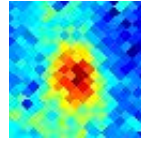
0.41±0.04 Jy

G221.44+45.06
J0947+132



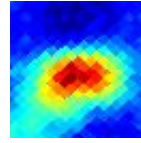
0.96±0.06 Jy

G221.67-17.03
J0604-152



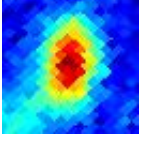
0.44±0.06 Jy

G221.92-01.98
J0700-089



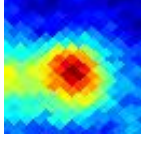
1.93±0.16 Jy E

G222.24+01.14
J0712-077



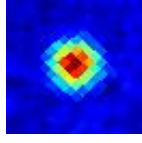
1.05±0.07 Jy E

G222.60-01.58
J0703-093



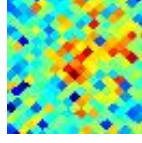
0.88±0.10 Jy E

G222.61-16.18
J0609-157



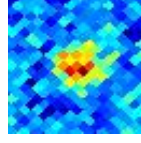
1.66±0.04 Jy

G222.66-10.56
J0630-133



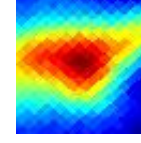
0.29±0.05 Jy E

G223.15+03.94
J0724-072



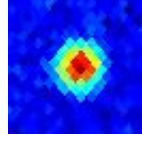
0.38±0.06 Jy

G223.70-01.90
J0704-104



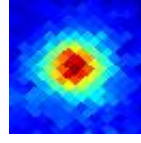
3.61±0.27 Jy E

G223.72-34.89
J0457-234



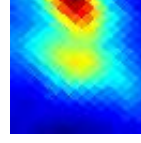
1.28±0.06 Jy

G224.15+01.22
J0716-094



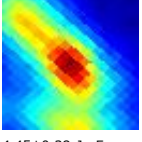
1.81±0.05 Jy

G224.26-01.05
J0708-105



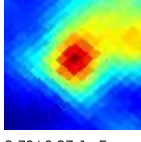
2.27±0.38 Jy E

G224.27-00.81
J0709-104



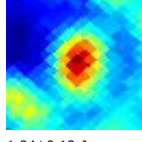
4.45±0.38 Jy E

G224.36-02.02
J0705-110



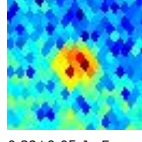
3.79±0.27 Jy E

G224.45-02.39
J0704-113



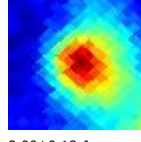
1.84±0.13 Jy

G224.54-50.90
J0348-278



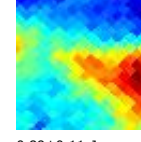
0.38±0.05 Jy E

G224.77-01.75
J0706-113



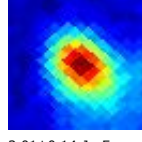
2.00±0.13 Jy

G225.06-02.71
J0704-120



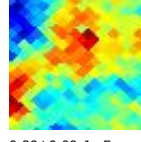
0.89±0.11 Jy

G225.45-02.59
J0705-123



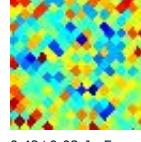
3.01±0.14 Jy E

G226.11-00.42
J0714-119



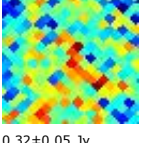
0.89±0.09 Jy E

G226.35-28.87
J0525-236



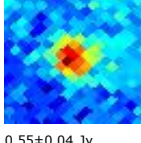
0.42±0.03 Jy E

G227.37-09.05
J0644-169



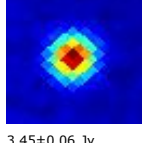
0.32±0.05 Jy

G227.70-07.70
J0650-166



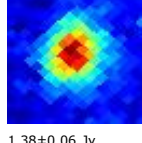
0.55±0.04 Jy

G227.76+03.14
J0730-116



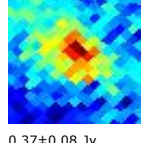
3.45±0.06 Jy

G227.76-00.12
J0718-132



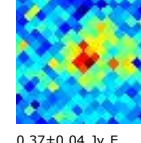
1.38±0.06 Jy

G227.78-08.19
J0648-169



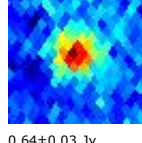
0.37±0.08 Jy

G227.78-21.37
J0557-222



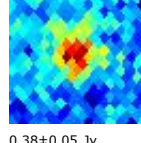
0.37±0.04 Jy E

G228.33+53.15
J1025+128



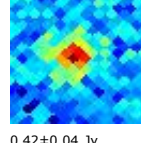
0.64±0.03 Jy

G228.33+32.82
J0914+027



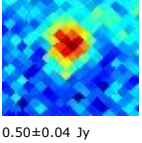
0.38±0.05 Jy

G228.49-08.61
J0648-177



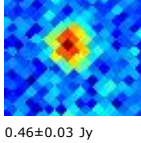
0.42±0.04 Jy

G228.63-13.67
J0629-199



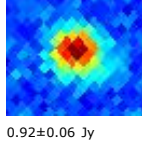
0.50±0.04 Jy

G228.91-18.96
J0608-223



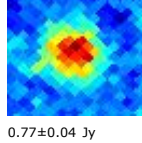
0.46±0.03 Jy

G228.94+30.93
J0909+013



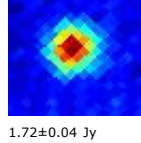
0.92±0.06 Jy

G228.99-04.61
J0704-163



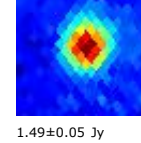
0.77±0.04 Jy

G229.02+13.16
J0808-078



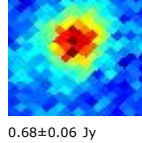
1.72±0.04 Jy

G229.02-37.01
J0453-281



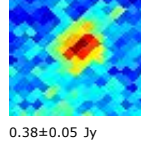
1.49±0.05 Jy

G229.57+00.12
J0722-147



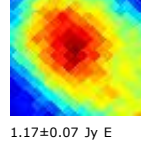
0.68±0.06 Jy

G230.77+08.24
J0754-117



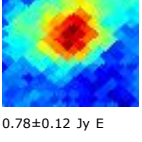
0.38±0.05 Jy

G230.89+02.24
J0733-148



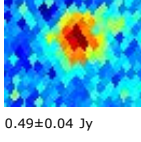
1.17±0.07 Jy E

G231.00+01.49
J0730-153



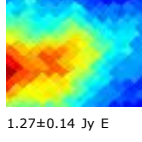
0.78±0.12 Jy E

G231.26-48.51
J0402-318



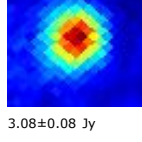
0.49±0.04 Jy

G231.48-01.82
J0719-173



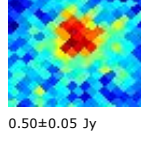
1.27±0.14 Jy E

G231.50-04.37
J0710-185



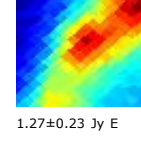
3.08±0.08 Jy

G231.92-06.51
J0702-198



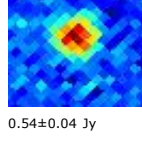
0.50±0.05 Jy

G231.95-02.06
J0719-178



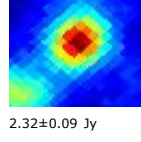
1.27±0.23 Jy E

G232.56-13.95
J0634-235



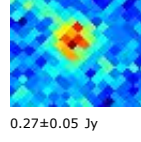
0.54±0.04 Jy

G232.61+01.01
J0732-169



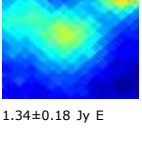
2.32±0.09 Jy

G232.79-17.62
J0620-252



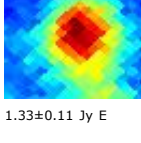
0.27±0.05 Jy

G232.80+00.84
J0731-172



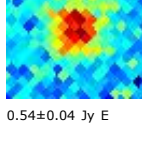
1.34±0.18 Jy E

G232.80+00.15
J0729-175



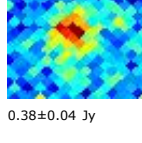
1.33±0.11 Jy E

G232.93-27.29
J0539-286



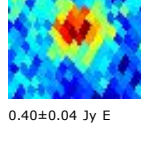
0.54±0.04 Jy E

G233.36+04.46
J0746-159



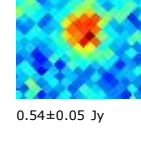
0.38±0.04 Jy

G233.50+46.01
J1007+063



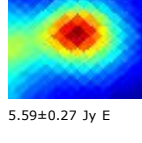
0.40±0.04 Jy E

G233.74+21.96
J0847-070



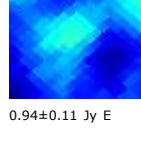
0.54±0.05 Jy

G233.77-00.18
J0730-185



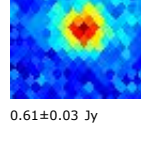
5.59±0.27 Jy E

G234.33-00.45
J0730-191



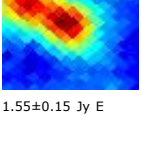
0.94±0.11 Jy E

G234.42-34.17
J0510-317



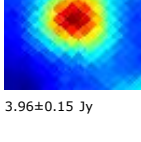
0.61±0.03 Jy

G234.58+00.84
J0735-187



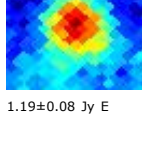
1.55±0.15 Jy E

G234.61-00.21
J0731-193



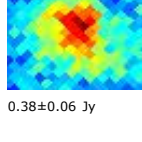
3.96±0.15 Jy

G235.46-04.30
J0718-219



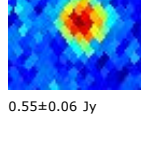
1.19±0.08 Jy E

G236.47-14.38
J0639-272



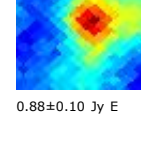
0.38±0.06 Jy

G236.61+38.71
J0948+003



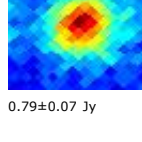
0.55±0.06 Jy

G236.61-02.13
J0728-219



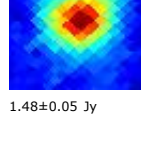
0.88±0.10 Jy E

G236.82+01.99
J0744-201



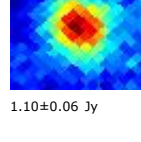
0.79±0.07 Jy

G237.27-01.27
J0733-221

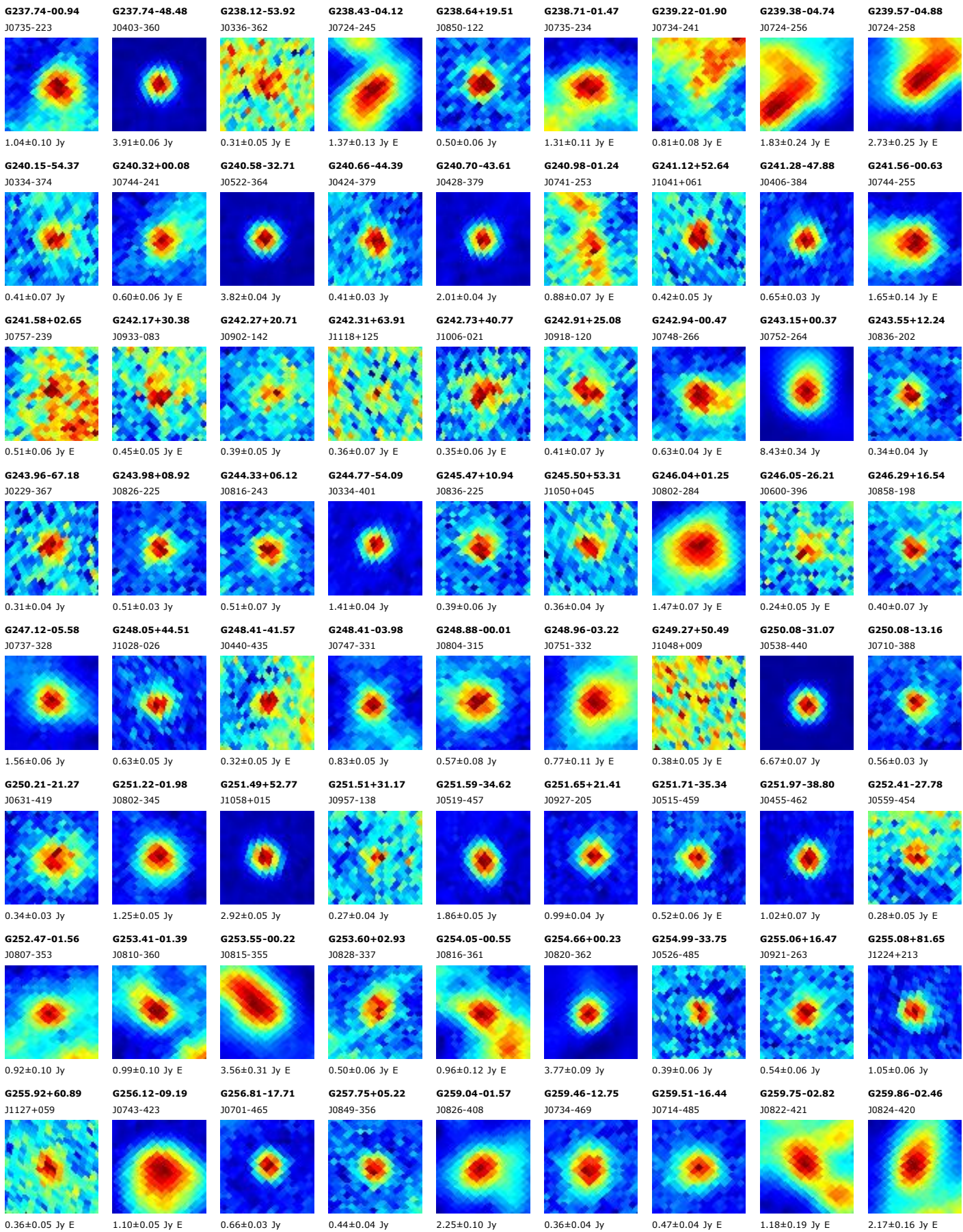


1.48±0.05 Jy

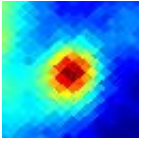
G237.54+01.85
J0745-208



1.10±0.06 Jy

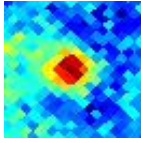


G259.94-00.02
J0835-406



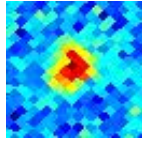
3.01±0.18 Jy

G260.25-11.68
J0741-471



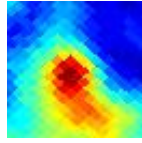
0.38±0.06 Jy E

G260.71-12.39
J0739-478



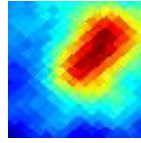
0.29±0.04 Jy

G260.77+00.67
J0841-408



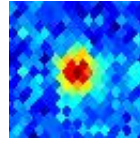
1.46±0.14 Jy

G260.91+00.11
J0839-413



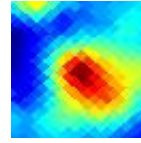
2.10±0.17 Jy E

G261.05+32.05
J1024-186



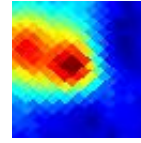
0.45±0.03 Jy

G261.41+00.84
J0844-412



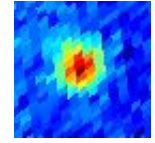
2.31±0.18 Jy E

G261.64-02.08
J0832-432



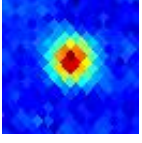
1.89±0.18 Jy E

G261.81-60.09
J0245-468



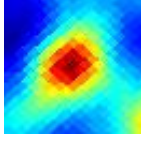
0.57±0.03 Jy

G262.04-31.87
J0540-543



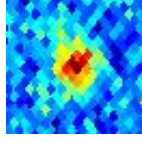
0.43±0.03 Jy

G262.09-01.81
J0834-434



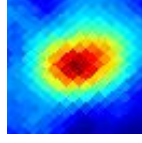
3.08±0.19 Jy E

G262.12+36.48
J1039-156



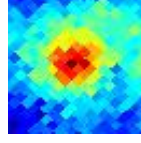
0.43±0.07 Jy

G262.14+00.10
J0843-422



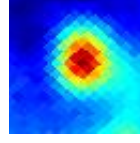
1.97±0.12 Jy E

G262.24-12.47
J0742-492



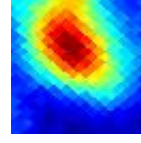
0.43±0.06 Jy

G262.25+01.44
J0849-415



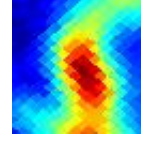
2.44±0.12 Jy

G262.37-03.46
J0828-446



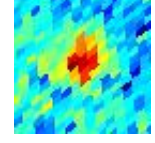
2.05±0.19 Jy E

G262.44-03.06
J0830-444



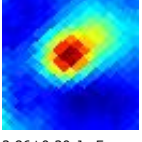
1.38±0.16 Jy E

G262.78-64.03
J0225-450



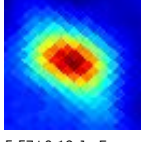
0.39±0.04 Jy

G263.23+00.50
J0848-429



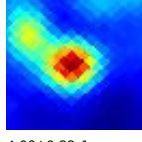
2.86±0.20 Jy E

G263.25+01.58
J0853-422



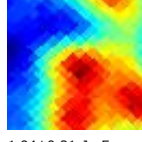
5.57±0.19 Jy E

G263.61-00.52
J0845-438



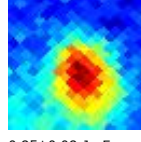
4.00±0.22 Jy

G263.74+00.12
J0848-435



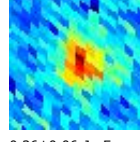
1.94±0.21 Jy E

G264.00-11.51
J0753-503



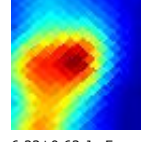
0.85±0.08 Jy E

G264.13+42.70
J1059-115



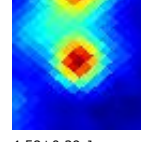
0.36±0.06 Jy E

G264.14+01.99
J0858-426



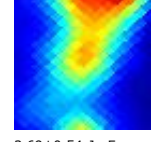
6.23±0.63 Jy E

G264.28+01.47
J0856-430



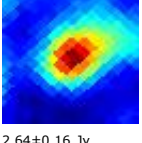
4.58±0.29 Jy

G264.28+01.73
J0857-429



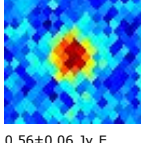
3.69±0.54 Jy E

G264.33-00.17
J0849-441



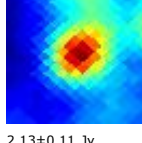
2.64±0.16 Jy

G264.42+32.29
J1035-201



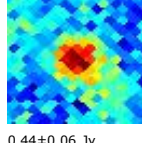
0.56±0.06 Jy E

G264.68-00.29
J0850-445



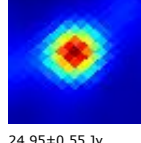
2.13±0.11 Jy

G264.79-08.59
J0811-494



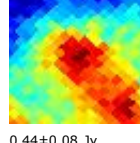
0.44±0.06 Jy

G265.13+01.44
J0859-437



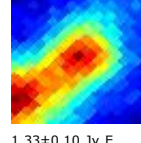
24.95±0.55 Jy

G265.58-05.81
J0827-485



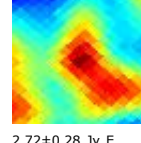
0.44±0.08 Jy

G265.77-07.31
J0821-496



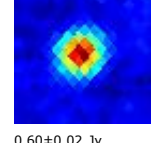
1.33±0.10 Jy E

G265.84+01.10
J0900-445



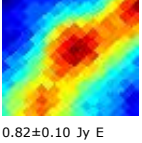
2.72±0.28 Jy E

G265.89-30.73
J0550-575



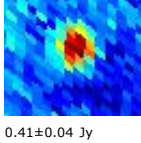
0.60±0.02 Jy

G266.01-07.45
J0821-498



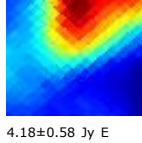
0.82±0.10 Jy E

G266.24+50.45
J1121-059



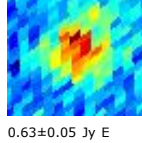
0.41±0.04 Jy

G266.25+00.74
J0900-450



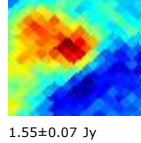
4.18±0.58 Jy E

G266.30-61.62
J0231-477



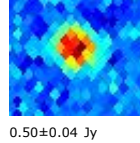
0.63±0.05 Jy E

G266.51+00.24
J0859-455



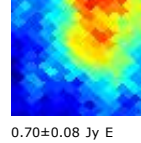
1.55±0.07 Jy

G266.74+34.91
J1048-191



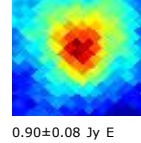
0.50±0.04 Jy

G266.98-04.84
J0837-491



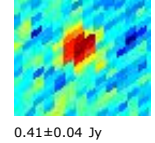
0.70±0.08 Jy E

G267.65-07.36
J0827-511



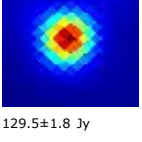
0.90±0.08 Jy E

G267.77-75.32
J0134-387



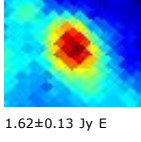
0.41±0.04 Jy

G267.93-01.06
J0859-475



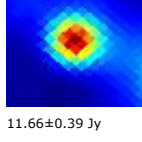
129.5±1.8 Jy

G268.24-03.17
J0850-491



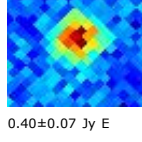
1.62±0.13 Jy E

G268.42-00.83
J0901-477



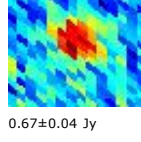
11.66±0.39 Jy

G268.45+21.03
J1018-314



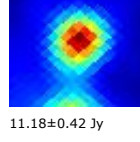
0.40±0.07 Jy E

G268.93+52.51
J1131-050



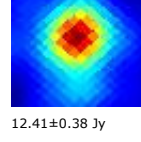
0.67±0.04 Jy

G269.14-01.12
J0903-484



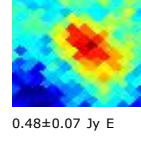
11.18±0.42 Jy

G269.16-01.44
J0902-486



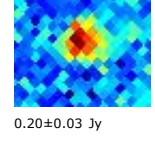
12.41±0.38 Jy

G269.48+03.94
J0926-451



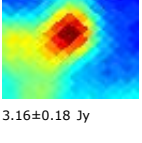
0.48±0.07 Jy E

G269.53-28.65
J0607-605



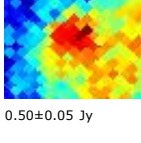
0.20±0.03 Jy

G269.79+00.85
J0914-475



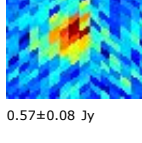
3.16±0.18 Jy

G269.91+05.24
J0933-445



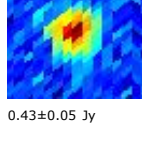
0.50±0.05 Jy

G270.08+53.52
J1135-044



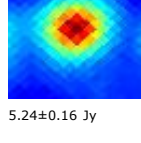
0.57±0.08 Jy

G270.26+44.34
J1118-125



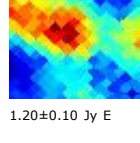
0.43±0.05 Jy

G270.26+00.83
J0916-479



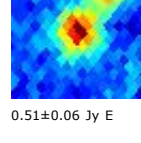
5.24±0.16 Jy

G270.29+02.86
J0925-465



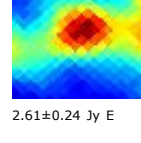
1.20±0.10 Jy E

G270.53-36.06
J0506-611



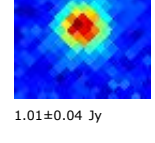
0.51±0.06 Jy E

G270.81+00.66
J0918-484



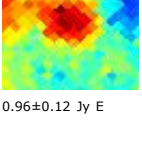
2.61±0.24 Jy E

G270.94+24.82
J1037-295



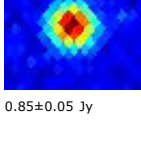
1.01±0.04 Jy

G270.99+04.77
J0935-456



0.96±0.12 Jy E

G271.49-34.74
J0516-621



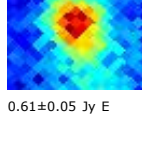
0.85±0.05 Jy

G271.50+04.86
J0938-458



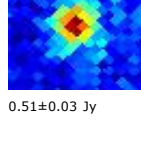
1.17±0.12 Jy E

G272.24-15.22
J0756-591



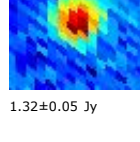
0.61±0.05 Jy E

G272.30-07.48
J0845-549



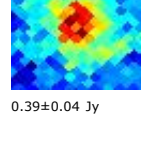
0.51±0.03 Jy

G272.48-54.60
J0253-546



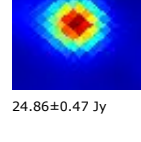
1.32±0.05 Jy

G273.12-07.98
J0845-559



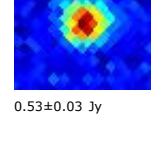
0.39±0.04 Jy

G273.99-01.14
J0924-519



24.86±0.47 Jy

G274.32-27.31
J0623-646



0.53±0.03 Jy

