

-61°21'00.0"

# BP Cir

Period = 2.40 days

$\varpi_{\text{prior}} = 1.700 \pm 0.255 \text{ mas}$

$\varpi_{\text{DR2}} = 1.024 \pm 0.040 \text{ mas}$

$\mu_{\text{HG}}$   $\mu_{\text{DR2}}$

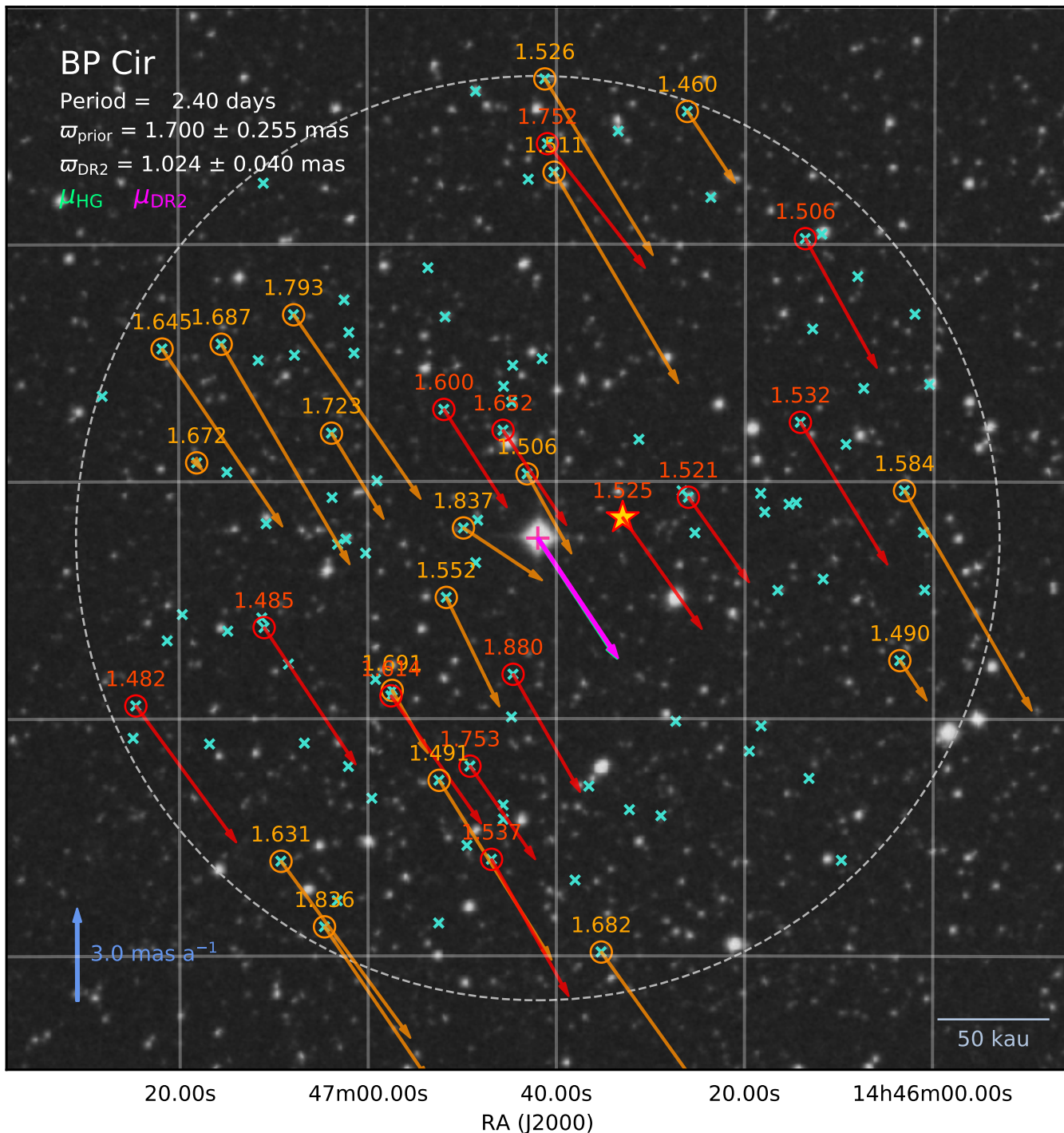
24'00.0"

27'00.0"

30'00.0"

33'00.0"

Dec (J2000)



50 kau

20.00s

47m00.00s

RA (J2000)

20.00s

14h46m00.00s