

Planck Early Release Compact Source Catalog

PLCKERC044 (44 GHz)

Computed PSF

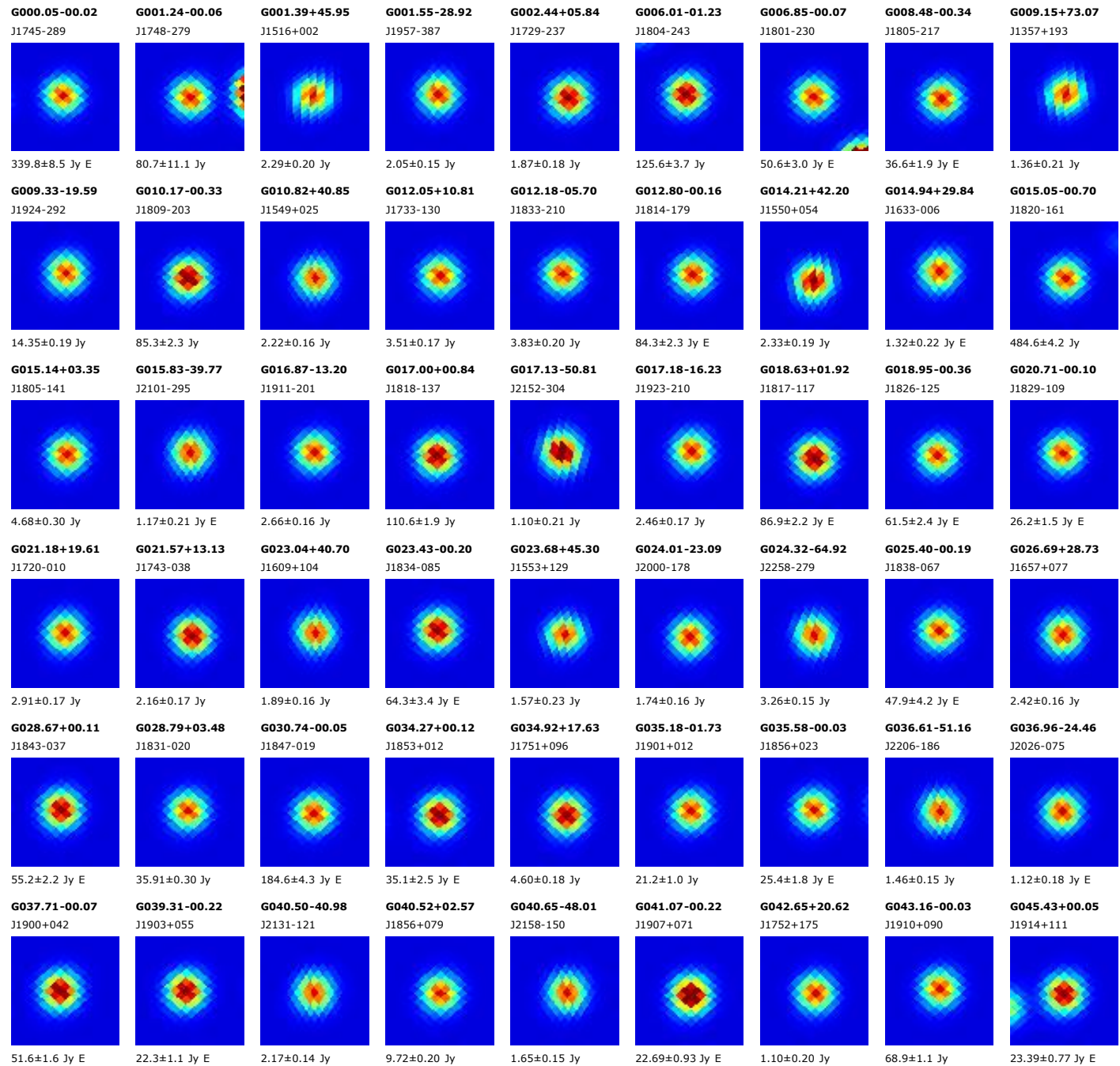
Catalog: ERCSC_f044.fits (452 sources) sorted by GLON

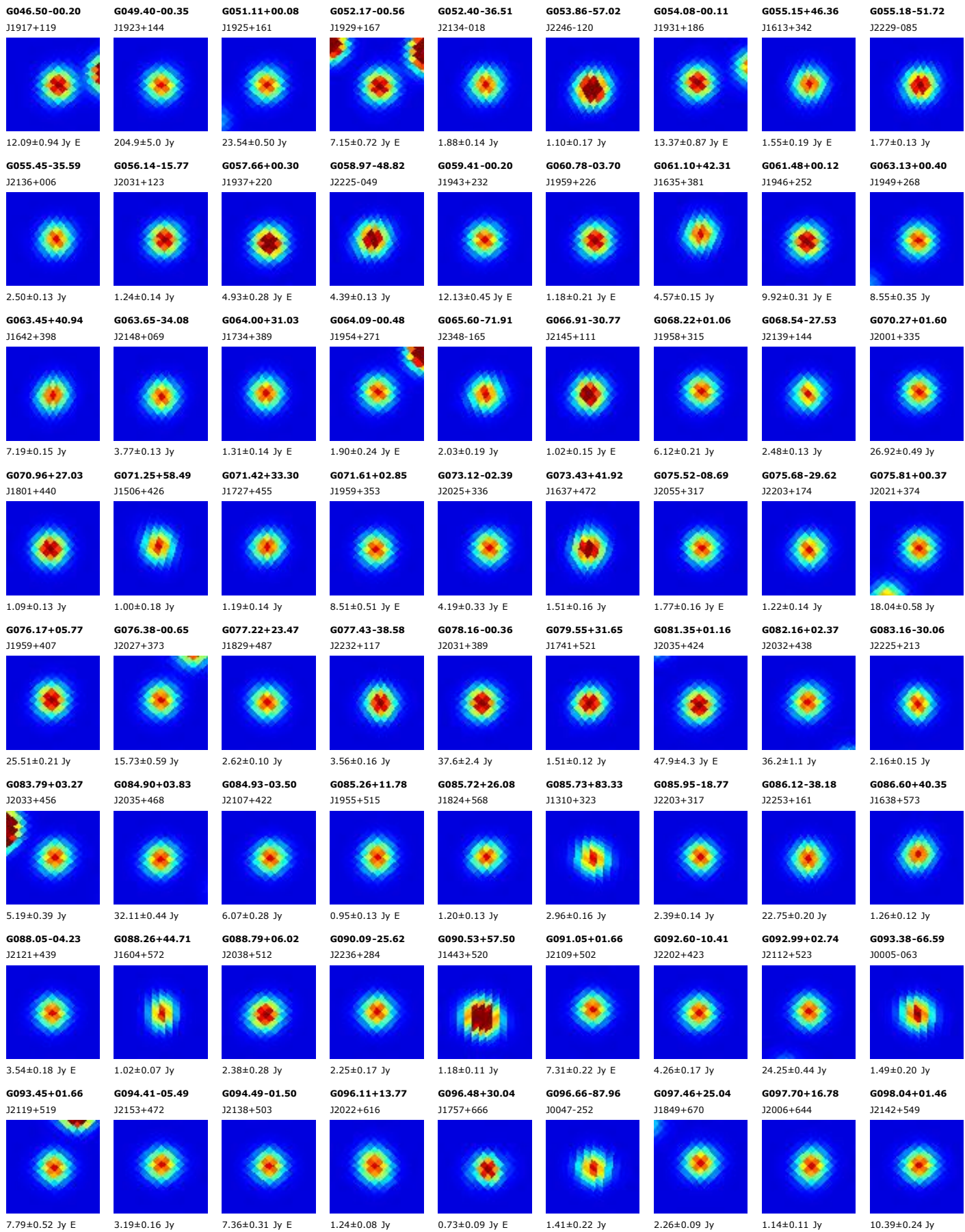
Origin: U.S. Planck Data Center

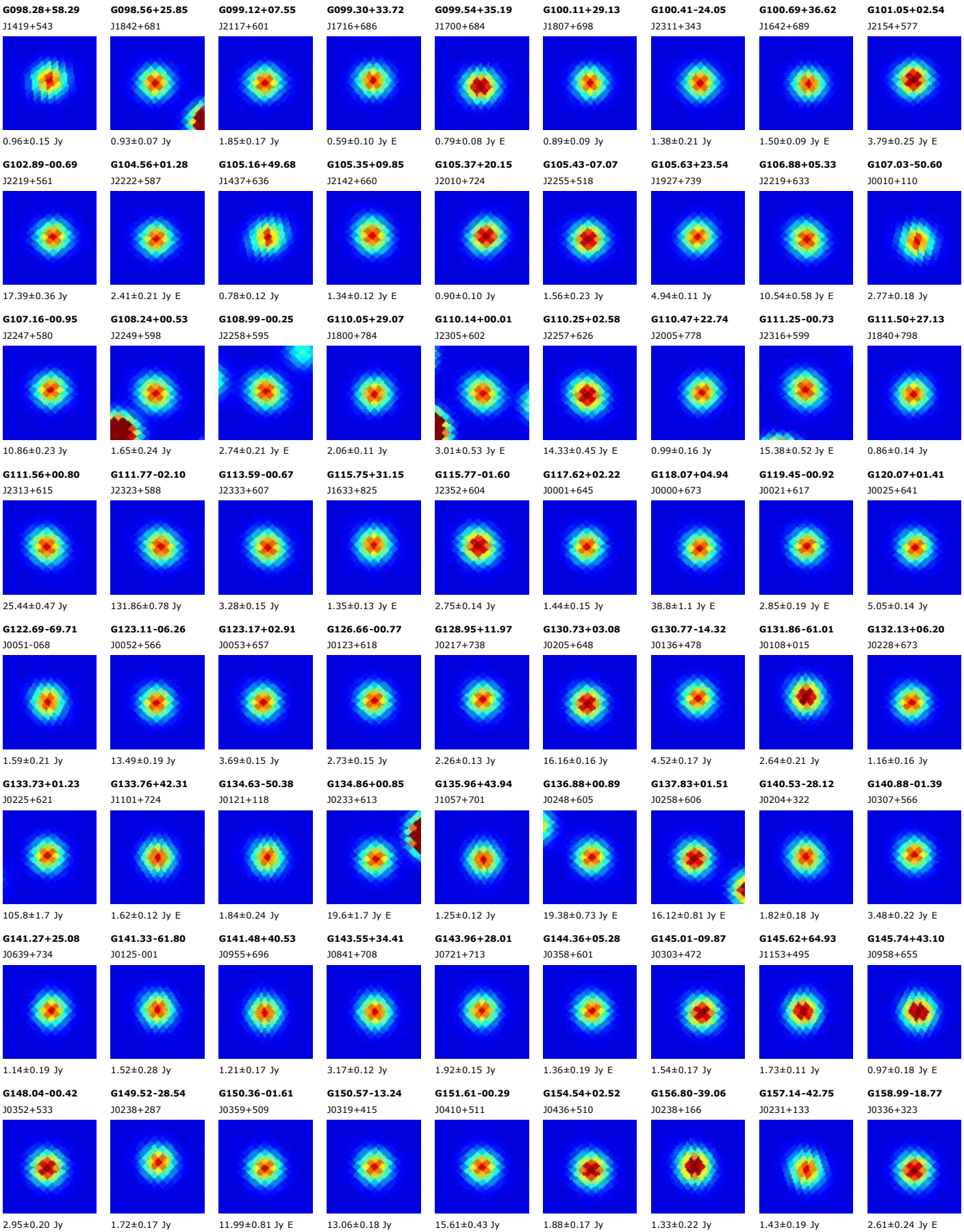
Date: 2010-11-17

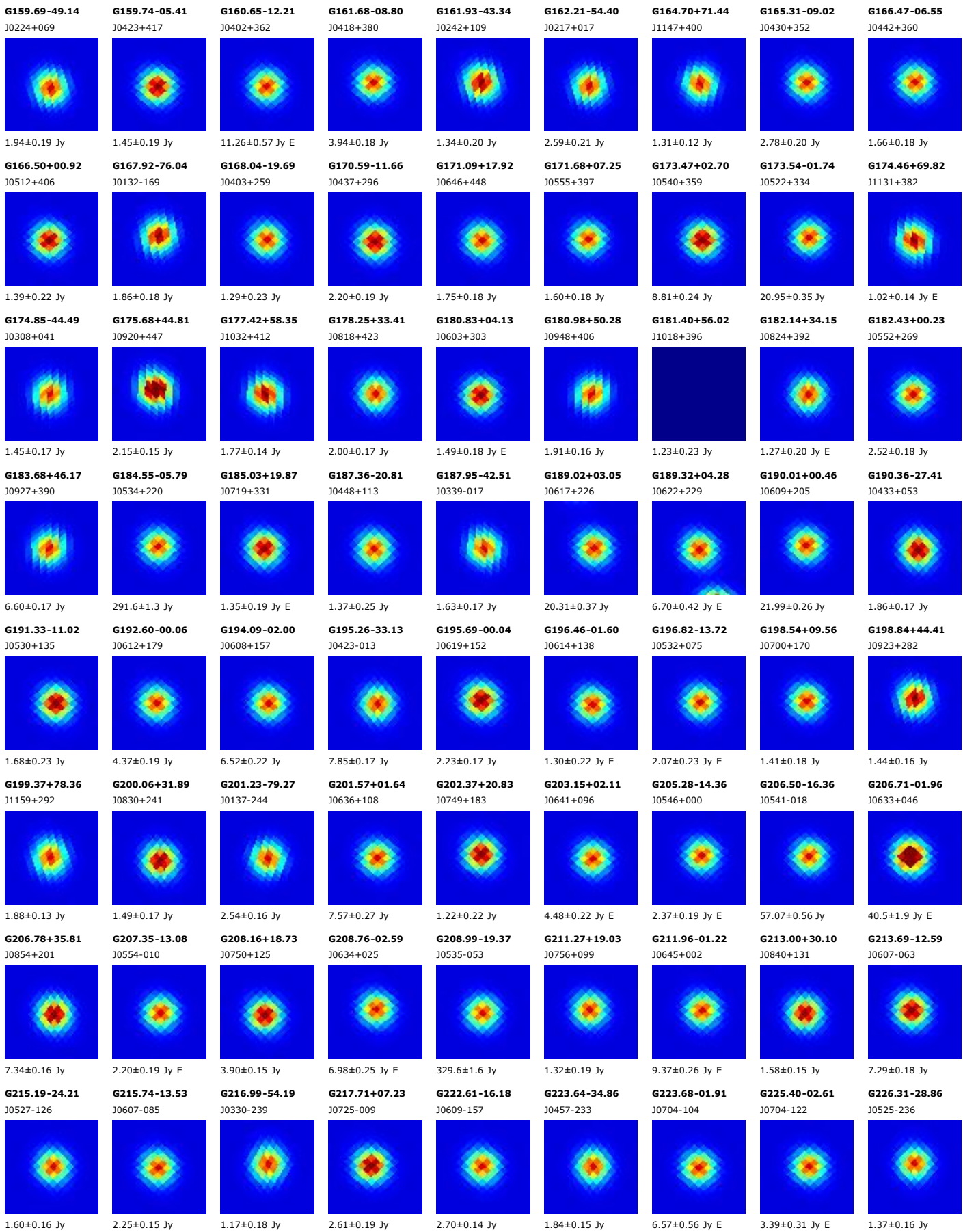
Map: ERCSC_f044_EB_map.fits

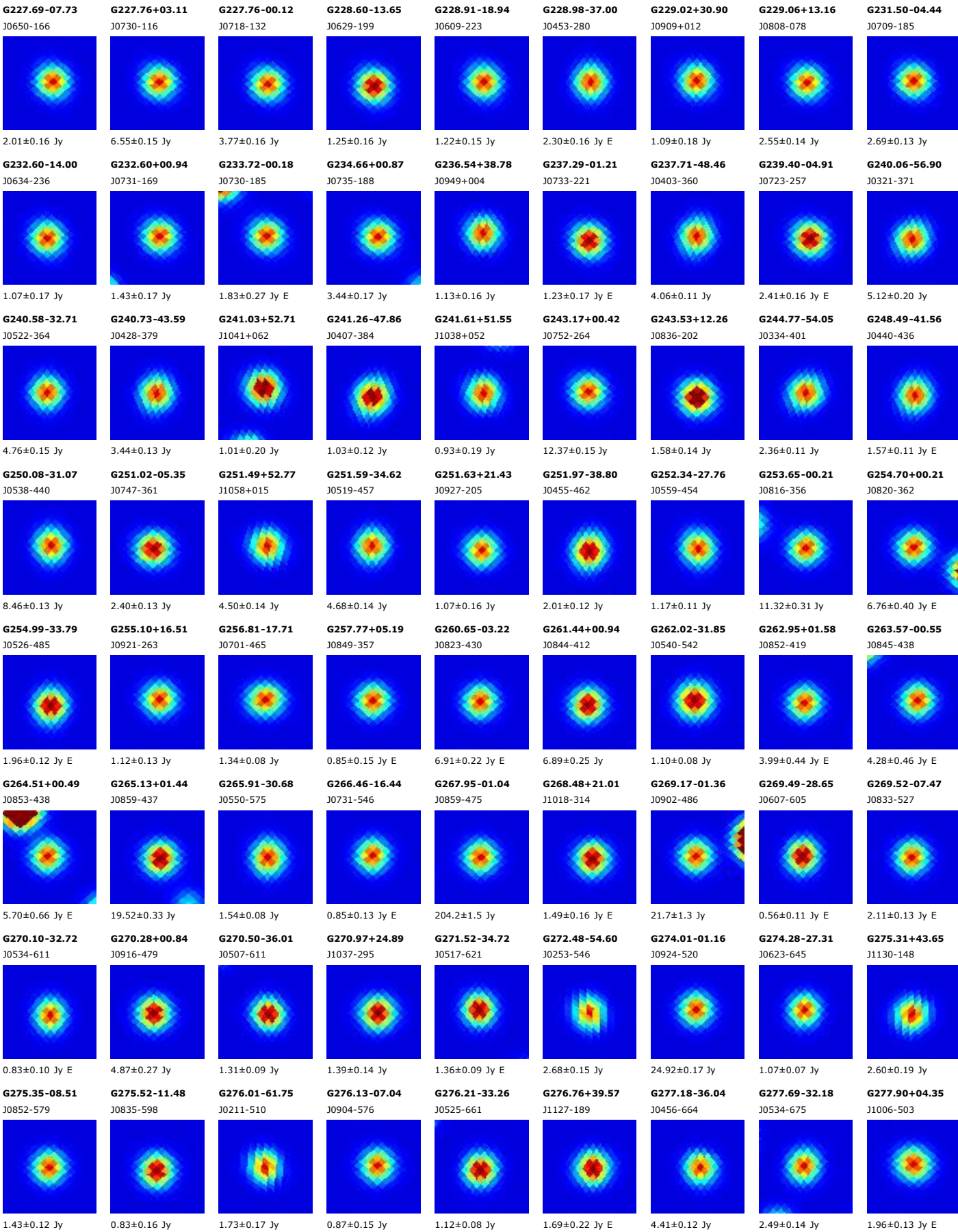
Image width: 1.80 deg



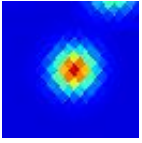






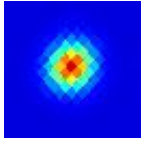


G278.40-33.32
J0522-679



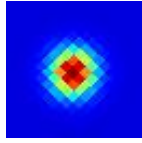
1.89±0.13 Jy

G279.46-31.69
J0538-690



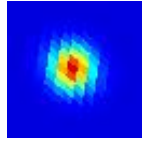
37.23±0.48 Jy

G279.46-20.14
J0743-674



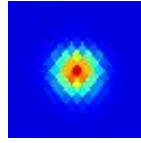
0.99±0.10 Jy

G280.18-48.64
J0304-622



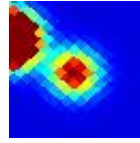
1.72±0.16 Jy E

G280.81-35.67
J0451-693



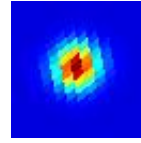
2.31±0.11 Jy

G281.02-01.52
J0959-568



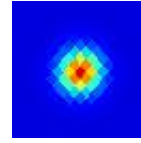
10.2±1.5 Jy E

G281.79+67.33
J1219+057



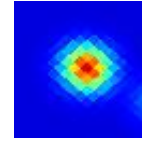
2.04±0.19 Jy

G281.86-32.05
J0530-710



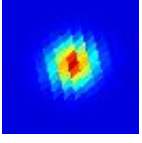
2.05±0.10 Jy E

G282.01-01.13
J1006-571



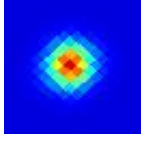
51.0±1.4 Jy

G283.70+74.49
J1230+123



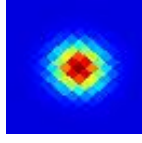
12.53±0.20 Jy

G284.20+14.24
J1107-448



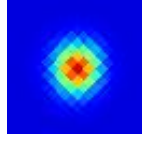
2.24±0.20 Jy

G284.28-00.33
J1024-577



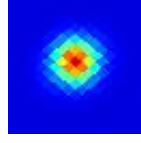
217.9±4.1 Jy

G286.36-27.15
J0635-752



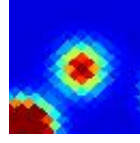
4.30±0.08 Jy

G287.46-00.64
J1044-596



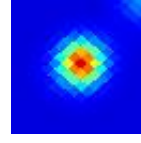
363.4±7.2 Jy

G289.03-00.32
J1056-600



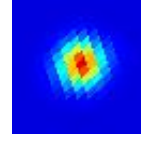
13.6±2.0 Jy E

G289.79-01.22
J1058-611



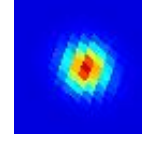
56.6±1.6 Jy

G289.93+64.36
J1229+020



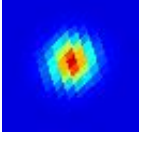
24.36±0.23 Jy

G290.76-76.13
J0106-406



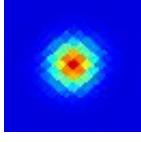
1.41±0.18 Jy

G291.13+44.58
J1216-174



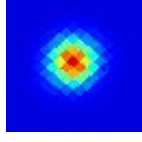
1.96±0.22 Jy

G291.62-00.50
J1115-612



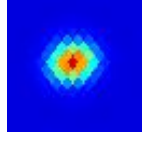
239.6±4.1 Jy

G292.03+01.77
J1124-592



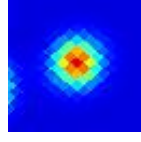
5.09±0.20 Jy

G293.41-37.55
J0312-768



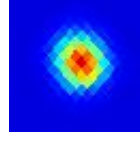
1.63±0.11 Jy

G293.64-01.34
J1128-627



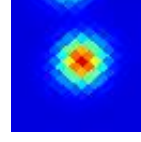
13.86±0.98 Jy

G293.87-31.39
J0449-810



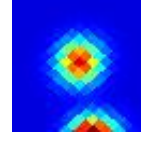
1.73±0.10 Jy E

G294.99-01.73
J1139-634



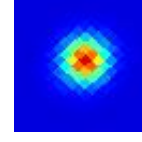
47.2±1.4 Jy

G295.12-00.68
J1142-625



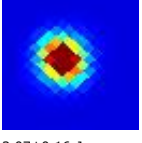
24.3±1.6 Jy E

G296.84+09.71
J1211-526



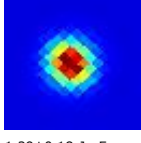
2.13±0.22 Jy

G296.96-05.77
J1147-679



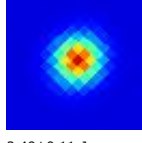
2.07±0.16 Jy

G297.30-07.75
J1145-699



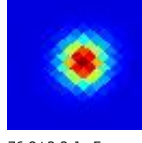
1.29±0.18 Jy E

G297.99-18.29
J1058-800



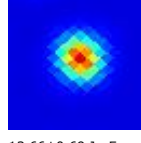
2.49±0.11 Jy

G298.83-00.43
J1215-630



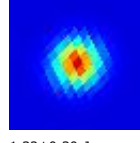
76.8±3.2 Jy E

G300.45-00.25
J1229-630



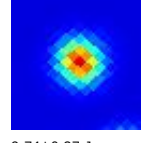
13.66±0.69 Jy E

G300.67+55.33
J1246-075



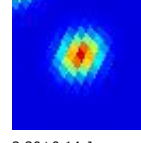
1.32±0.30 Jy

G301.02+01.05
J1235-617



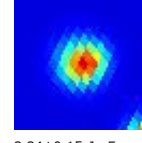
9.74±0.87 Jy

G302.08-44.97
J0059-721



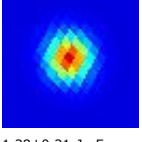
2.30±0.14 Jy

G303.28-43.87
J0047-732



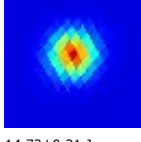
2.34±0.15 Jy E

G303.37-59.50
J0049-576



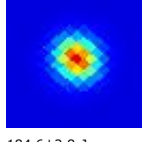
1.38±0.21 Jy E

G305.11+57.05
J1256-057



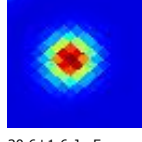
14.72±0.21 Jy

G305.26+00.14
J1311-626



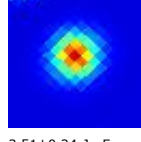
184.6±2.8 Jy

G308.68+00.60
J1340-617



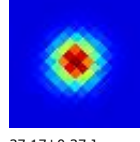
20.6±1.6 Jy E

G308.73+18.01
J1322-445



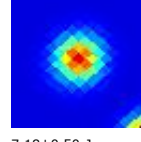
3.51±0.24 Jy E

G309.52+19.42
J1325-430



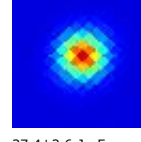
37.17±0.37 Jy

G309.71+01.71
J1346-604



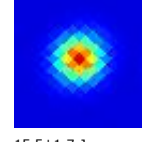
7.18±0.50 Jy

G311.95+00.10
J1407-614



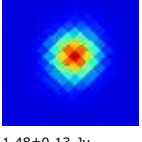
37.4±2.6 Jy E

G313.37+00.07
J1419-610



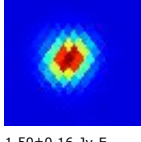
15.5±1.7 Jy

G313.38-18.85
J1617-773



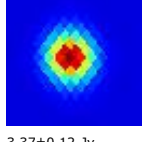
1.48±0.13 Jy

G314.06-55.08
J2358-608



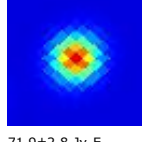
1.50±0.16 Jy E

G315.80-36.51
J2147-756



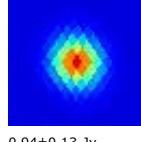
3.37±0.12 Jy

G316.75-00.06
J1445-598



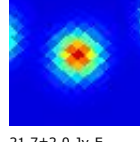
71.9±2.8 Jy E

G317.00-45.91
J2303-681



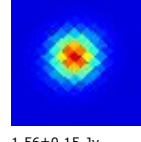
0.94±0.13 Jy

G318.08-00.62
J1456-597



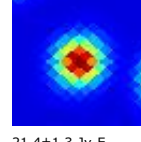
21.7±2.0 Jy E

G318.18+10.94
J1424-491



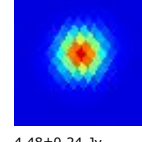
1.56±0.15 Jy

G319.20-00.31
J1503-589



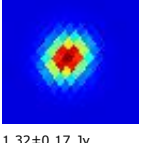
21.4±1.3 Jy E

G320.03+48.38
J1337-129



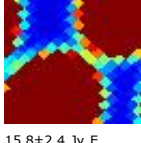
4.48±0.24 Jy

G320.13-62.10
J2358-532



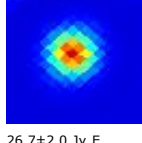
1.32±0.17 Jy

G320.77+00.20
J1511-577



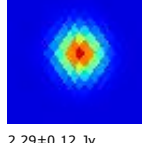
15.8±2.4 Jy E

G321.03-00.47
J1515-581



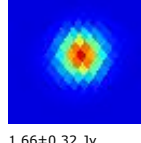
26.7±2.0 Jy E

G321.30-40.64
J2157-696



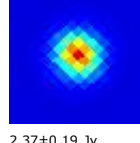
2.29±0.12 Jy

G321.40+56.25
J1332-051



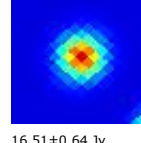
1.66±0.32 Jy

G321.42+17.26
J1427-421



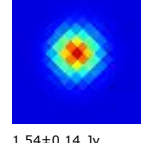
2.37±0.19 Jy

G322.14+00.61
J1518-566



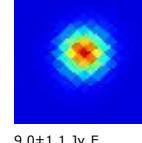
16.51±0.64 Jy

G323.73-24.40
J1836-710



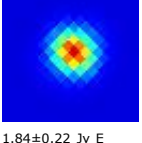
1.54±0.14 Jy

G324.16+00.18
J1532-559



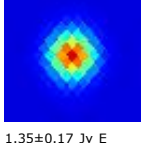
9.0±1.1 Jy E

G325.15+25.59
J1427-330



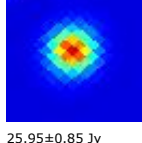
1.84±0.22 Jy E

G326.14-34.56
J2036-687



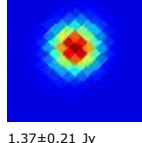
1.35±0.17 Jy E

G326.21-01.75
J1552-562



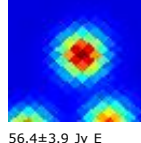
25.95±0.85 Jy

G326.32+08.46
J1514-478



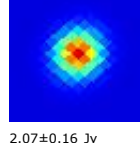
1.37±0.21 Jy

G326.66+00.54
J1544-541



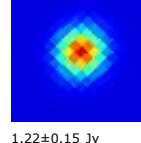
56.4±3.9 Jy E

G326.96-05.90
J1617-588



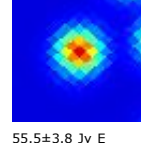
2.07±0.16 Jy

G326.97-15.81
J1723-649



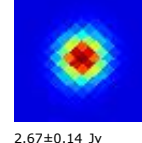
1.22±0.15 Jy

G327.28-00.54
J1552-545



55.5±3.8 Jy E

G328.09-12.42
J1703-622



2.67±0.14 Jy

